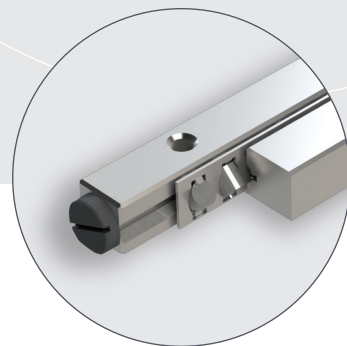
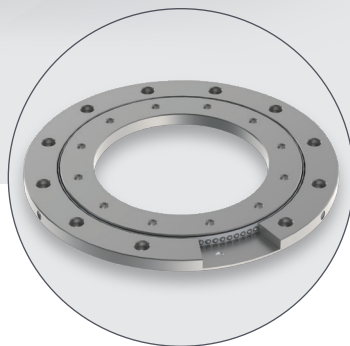
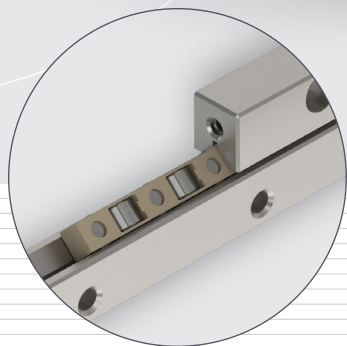
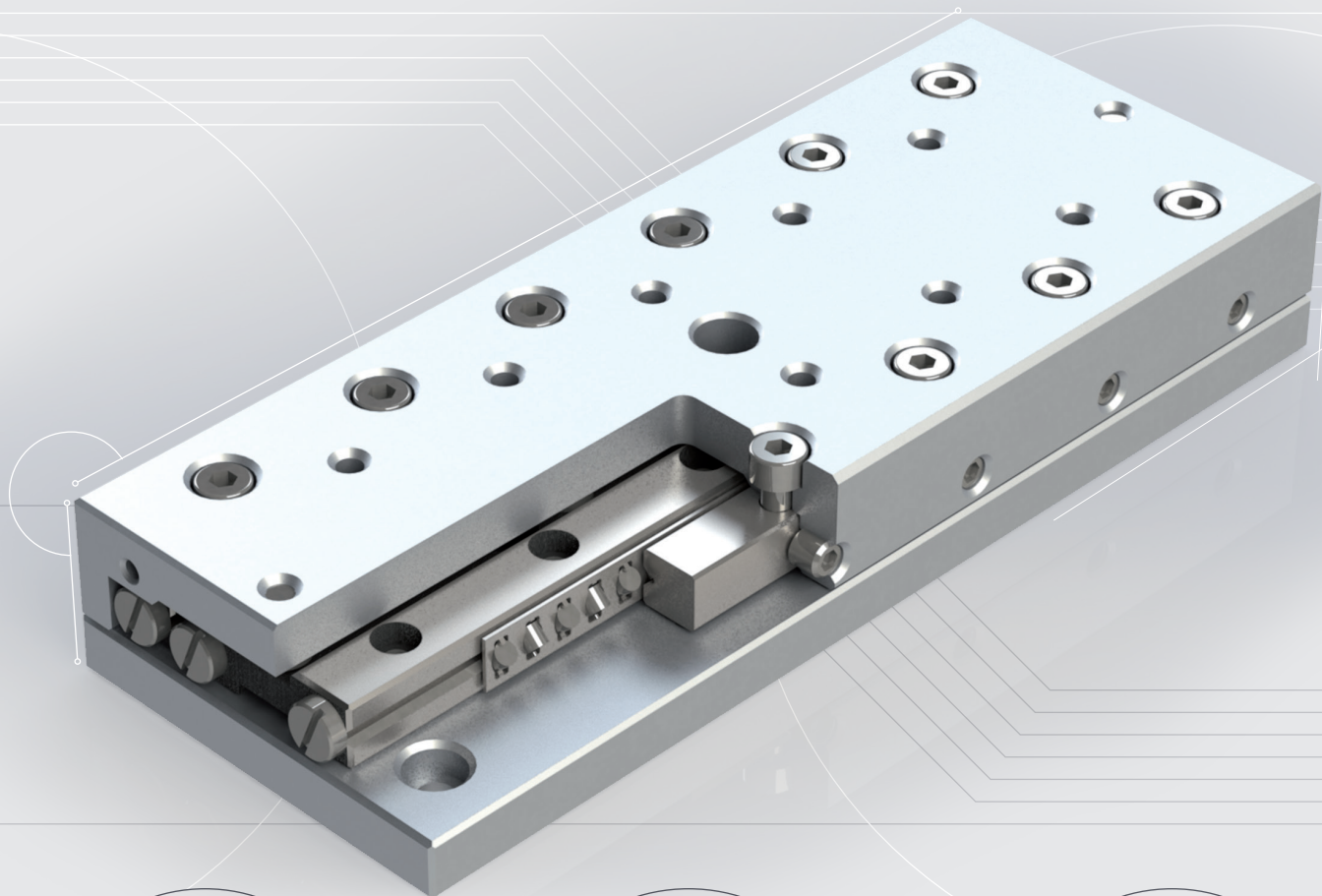


OVER  
**50**  
YEARS  
*of success*



## LINEAR BEARINGS TYPE RSDE



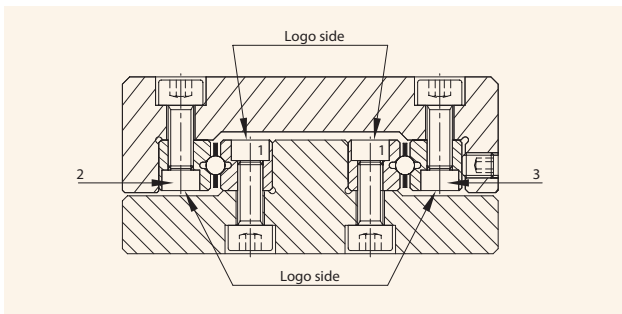
# ASSEMBLY PROCEDURE

## BEFORE START ASSEMBLY

PM linear bearings are precision components; they have to be handled with meticulous care. To achieve a perfect linear bearing, please pay due attention to the following notes:

- Be careful in handling the components. Do not drop it or hit it with anything like a hammer. Damages on the rail surface will have his impact on the running performance and operation life.
- Keep out any foreign material when mounting the rails.
- During assembly, all linear bearing components must have the same room temperature.
- For an uniform tightening of the bolts the use of a torque screw driver is recommended. Various models and bits are available. Please consult PM.

## ASSEMBLY LINEAR BEARINGS



For a satisfying installation of all types of linear bearings in this catalog, the following should be observed:

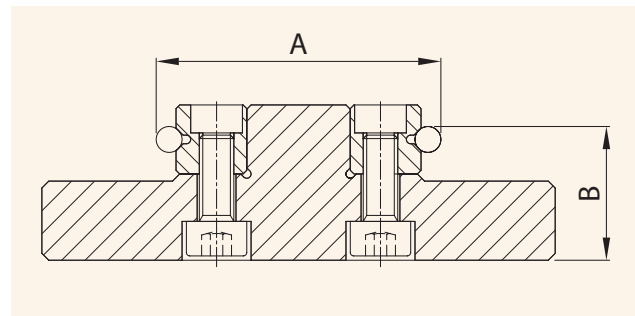
- 1) Fixing holes in the support structure (slide-base) should be "spotted through" from the holes in the rails. This is highly desirable as the original pitch of individual holes may have altered during hardening by as much as 0.4 mm. To compensate this, in part at least, special attachment screws type GD or GDN can be supplied. The dimensions of these are listed in the tables under the relative linear bearings for sizes.
- 2) Carefully de-burr and clean all constructional elements, to ensure a flat surface and a perfect seating of the rails.
- 3) The inner rail-pair (1), mounted "shoulder-to-shoulder" should be bolted down first, as follows: The base and reference face 1 of the linear bearing rails should be lightly oiled before they are clamped

against the mounting and reference shoulder.

They should then be bolted down by tightening up progressively, starting from one end and working to the other.

- 4) Parallelism of the V-tracks of the rails (A and B) should be checked. The tolerance must be within the tolerance of the linear bearings (page 14). When this has been done, the slide element in question is now ready for assembly.

*Parallelism of rails V-track:  $\Delta A$  und  $\Delta B$*



- 4.1) The slide top can now be assembled. The fixed bearing rail (2) should be mounted as described at 3.1 above, but the adjustable rail (3) should only be screwed down lightly, to leave a gap between V-tracks for the insertion of ball-, roller- or needle cages.
- 5) This point only in cases where end stops are already inserted in the rail ends. Remove the end stop screws.
- 6) Carefully insert the cages. When the cages are exact in position, bolt down the adjustable V-rail lightly, until the screws are finger-tight.
- 7) Fit the end stop screws or end pieces.
- 8) The linear bearing set can now be play-free adjusted using the lateral preload setscrews. (chapter Preload Setting Linear Bearings, page 18).
- 9) Secure the attachment screws on the adjusting rail.
- 10) When assembly is finished, the linear bearings must be inspected for absence of play and for running the accuracy.



# TABLES

## RECOMMENDED PRELOAD SETTINGS

Table 1 Linear bearings RSD with roller cages

| Roller size (mm) | Pitch cage (mm) | Setscrew | Pitch* (mm) | Preload (Ncm) |
|------------------|-----------------|----------|-------------|---------------|
| 1.5              | 3               | M 2.5    | 10          | 0.75          |
| 2                | 4               | M3       | 15          | 1.50          |
| 3                | 5               | M5       | 25          | 4.50          |
| 4                | 7               | M5       | 40          | 11.50         |
| 6                | 12              | M6       | 100         | 18.50         |
| 9                | 14              | M8       | 100         | 105.50        |
| 12               | 22              | M10      | 100         | 176.50        |
| 15               | 20              | M12      | 100         | 370.00        |

Table 2 Linear bearings RSD with ball cages

| Roller size (mm) | Pitch cage (mm) | Setscrew | Pitch* (mm) | Preload (Ncm) |
|------------------|-----------------|----------|-------------|---------------|
| 1.5              | 3               | M 2.5    | 10          | 0.20          |
| 2                | 4               | M3       | 15          | 0.40          |
| 3                | 5               | M5       | 25          | 1.10          |
| 4                | 7               | M5       | 40          | 2.70          |
| 6                | 9               | M6       | 50          | 4.00          |
| 9                | 14              | M8       | 100         | 11.70         |
| 12               | 15.5            | M10      | 100         | 25.00         |
| 15               | 20              | M12      | 100         | 34.50         |

Table 3 Linear bearings RSDE with roller cages

| Roller size (mm) | Pitch cage (mm) | Setscrew | Pitch* (mm) | Preload (Ncm) |
|------------------|-----------------|----------|-------------|---------------|
| 3                | 3.3             | M5       | 25          | 16            |
| 4                | 4.4             | M5       | 40          | 41            |
| 6                | 6.6             | M6       | 50          | 86            |
| 9                | On request      |          |             |               |

Table 4 Linear bearings RNG with roller cages

| Roller size (mm) | Pitch cage (mm) | Setscrew | Pitch* (mm) | Preload (Ncm) |
|------------------|-----------------|----------|-------------|---------------|
| 4                | 4.4             | M3       | 25          | 14            |
| 6                | 6.6             | M4       | 25          | 25            |

Table 5 Linear Bearings N/O and M/V with needle cages

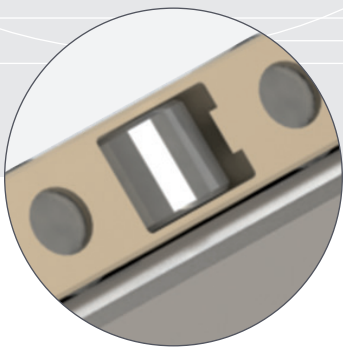
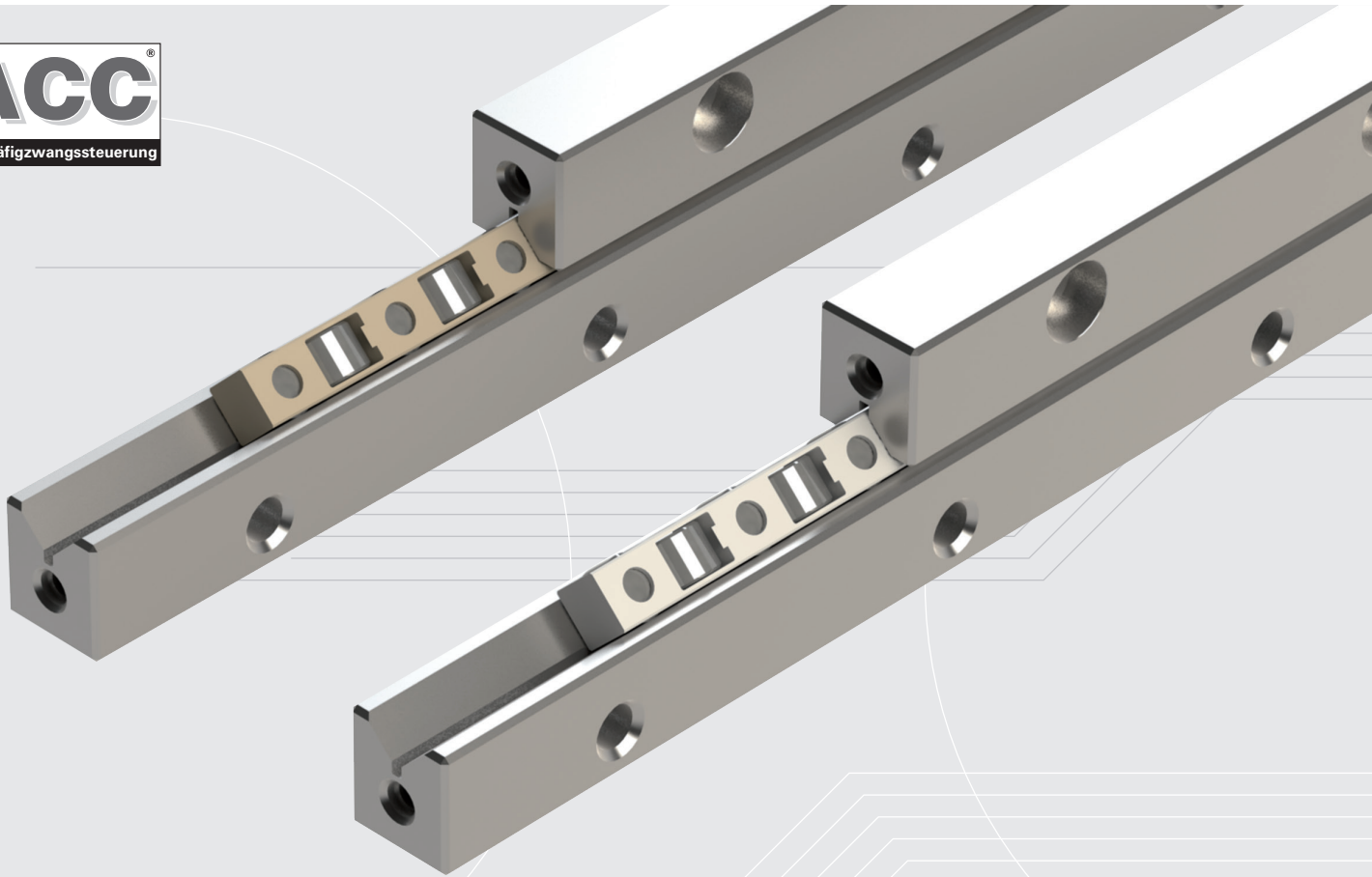
| Roller size (mm) | Pitch cage (mm) | Setscrew | Pitch* (mm) | Preload (Ncm) |
|------------------|-----------------|----------|-------------|---------------|
| 2                | 4.5             | M6       | 50          | 1.05          |
| 2                | 4.5             | M8       | 100         | 1.30          |
| 2.5              | 5               | M8       | 100         | 2.70          |
| 2.5              | 5.5             | M8       | 100         | 2.90          |
| 3                | 6               | M12      | 100         | 5.70          |
| 3.5              | 7               | M14      | 100         | 7.70          |

## RECOMMENDED TIGHTENING TORQUE FOR ATTACHMENT SCREWS

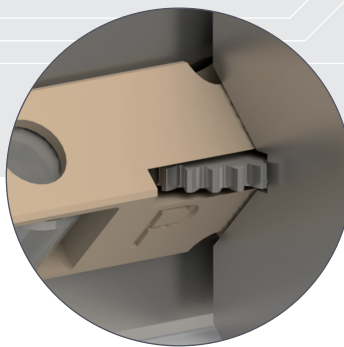
Table 6 Tightening torque strength grade 12.9

| Max. Tightening torques (Ncm) |                           |                              |
|-------------------------------|---------------------------|------------------------------|
| Size                          | Tightening Torque DIN 912 | Attachment screws GD and GDN |
| M2                            | 0.60                      | 0.48                         |
| M3                            | 2.00                      | 1.60                         |
| M4                            | 4.90                      | 3.92                         |
| M5                            | 9.60                      | 7.68                         |
| M6                            | 17.00                     | 13.60                        |
| M8                            | 41.00                     | 32.80                        |
| M10                           | 79.00                     | 63.20                        |
| M12                           | 140.00                    | 112.00                       |
| M14                           | 220.00                    | 176.00                       |

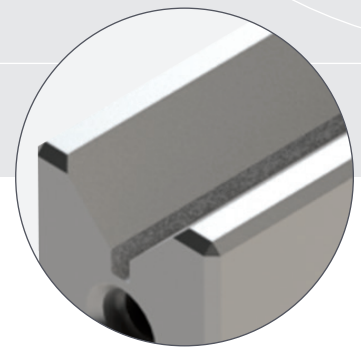
\*pitch between the preload setscrews



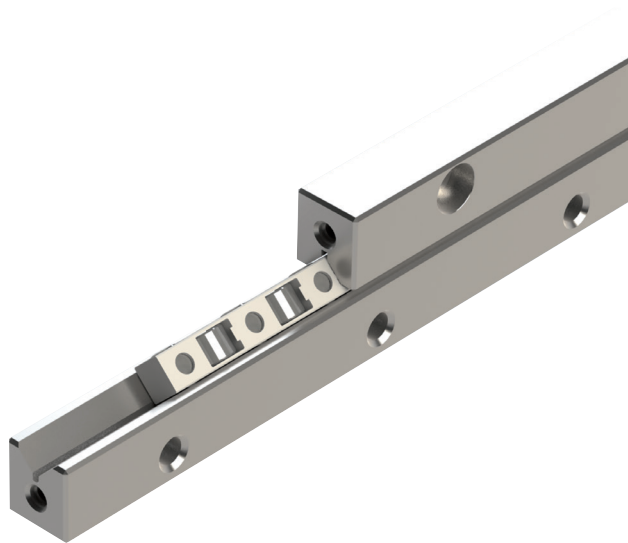
POM (KRE) AND PEEK  
(KREV) CAGES  
OPTIONAL CERAMIC  
ROLLERS



POM (KRE) AND PEEK  
(KREV) CAGES  
ANTI CAGE CREEP  
OPTIONAL



OPTIONAL DIMENSIONS  
3MM WITH 4MM ROLLERS  
OPTIONAL DIMENSIONS  
4MM WITH 6MM ROLLERS



*Linear bearings type RSDE are a further development on the the RSD type. Thanks to the deeper V-groove in combination with special designed cylindrical rollers, they offer higher load ratings and stiffness without changing the envelop dimensions of the rails. RSDE rails are used mostly in highly-dynamic applications requiring high speed, high running accuracy and outstanding quality.*

### STRUCTURE AND FEATURES

The construction exists of two pairs linear bearings; one pair consists of two similar 90° V-groove, through-hardened and precision ground, fitted with a crossed roller cage in-between (KRE cage: rollers retained). The rails are equipped with countersunk-bored attachment holes, according to a standard configuration.

Key-features are:

- Load capacity approx. 3 x higher than RSD rails
- Stiffness is doubled, due to the enlarged contact area of the running surface (approx. 80% with RSDE, conventional types 35%)
- The compact design prevents that dust and dirt enter the inside of the rails. The space between the rails is reduced to a minimum
- Designed for higher speeds and accelerations. Anti-cage creep is optional

Threaded holes in ends for fixing end screws GB.

For assembly of the rails, special screws type GD can be ordered separately (see page 35).

### NOTES BY ORDERING

One set linear bearings RSDE consists of:  
4 pcs. rails (=2 pairs) RSDE, 2 pcs. cages KRE and 8 pcs. End pieces and screws GB.

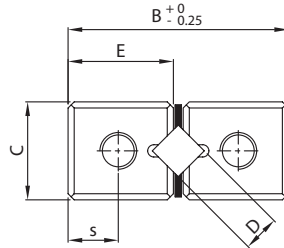
By ordering please specify the following:

- Quantity and type of rails
- Quantity, type and length of cages or max. stroke
- Direction of movement (eg: horizontal, vertical or in-between)
- Quantity and type of end pieces with or without wipers

#### **Example:**

To order one linear bearing set of 125 mm length, size 3 mm for a 75 mm in standard quality please specify:

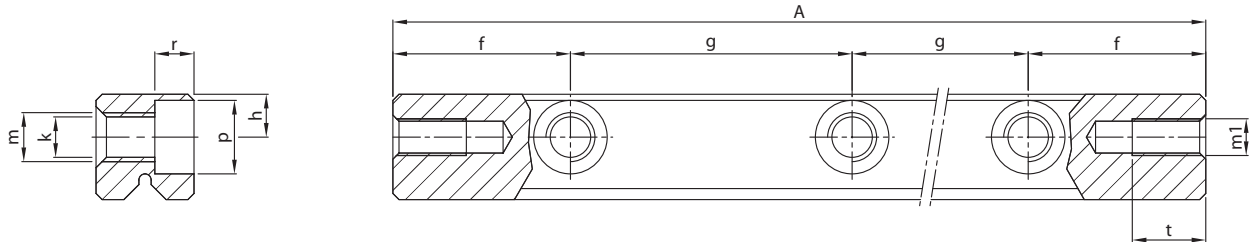
- 4 pcs. rails RSDE-3125
- 2 pcs. roller cages R3x26KRE
- 8 pcs. end pieces GB-3



| Rail type        |                 | Main dimensions |    |    |      |   | Mounting holes |       |              |     |    |     |  |
|------------------|-----------------|-----------------|----|----|------|---|----------------|-------|--------------|-----|----|-----|--|
| Standard         | Stainless steel | A               | B  | C  | E    | D | f              | g     | h            | k   | m  | p   |  |
| <b>RSDE-3050</b> | RSDE-3050-SS    | 50              |    |    |      |   |                | 1x25  |              |     |    |     |  |
| <b>RSDE-3075</b> | RSDE-3075-SS    | 75              |    |    |      |   |                | 2x25  |              |     |    |     |  |
| <b>RSDE-3100</b> | RSDE-3100-SS    | 100             |    |    |      |   |                | 3x25  |              |     |    |     |  |
| <b>RSDE-3125</b> | RSDE-3125-SS    | 125             |    |    |      |   |                | 4x25  |              |     |    |     |  |
| <b>RSDE-3150</b> | RSDE-3150-SS    | 150             |    |    |      |   |                | 5x25  |              |     |    |     |  |
| <b>RSDE-3175</b> | RSDE-3175-SS    | 175             | 18 | 8  | 8.6  | 3 | 12.5           | 6x25  | $3.5^{±0.2}$ | 3.2 | M4 | 6   |  |
| <b>RSDE-3200</b> | RSDE-3200-SS    | 200             |    |    |      |   |                | 7x25  |              |     |    |     |  |
| <b>RSDE-3225</b> | RSDE-3225-SS    | 225             |    |    |      |   |                | 8x25  |              |     |    |     |  |
| <b>RSDE-3250</b> | RSDE-3250-SS    | 250             |    |    |      |   |                | 9x25  |              |     |    |     |  |
| <b>RSDE-3275</b> | RSDE-3275-SS    | 275             |    |    |      |   |                | 10x25 |              |     |    |     |  |
| RSDE-3300        | RSDE-3300-SS    | 300             |    |    |      |   |                | 11x25 |              |     |    |     |  |
| RSDE-3350        | RSDE-3350-SS    | 350             |    |    |      |   |                | 13x25 |              |     |    |     |  |
| RSDE-4080        | RSDE-4080-SS    | 80              |    |    |      |   |                | 1x40  |              |     |    |     |  |
| RSDE-4120        | RSDE-4120-SS    | 120             |    |    |      |   |                | 2x40  |              |     |    |     |  |
| RSDE-4160        | RSDE-4160-SS    | 160             |    |    |      |   |                | 3x40  |              |     |    |     |  |
| RSDE-4200        | RSDE-4200-SS    | 200             |    |    |      |   |                | 4x40  |              |     |    |     |  |
| RSDE-4240        | RSDE-4240-SS    | 240             |    |    |      |   |                | 5x40  |              |     |    |     |  |
| RSDE-4280        | RSDE-4280-SS    | 280             | 22 | 11 | 10.6 | 4 | 20             | 6x40  | $4.5^{±0.2}$ | 4.3 | M5 | 7.5 |  |
| RSDE-4320        | RSDE-4320-SS    | 320             |    |    |      |   |                | 7x40  |              |     |    |     |  |
| RSDE-4360        | RSDE-4360-SS    | 360             |    |    |      |   |                | 8x40  |              |     |    |     |  |
| RSDE-4400        | RSDE-4400-SS    | 400             |    |    |      |   |                | 9x40  |              |     |    |     |  |
| RSDE-4440        | RSDE-4440-SS    | 440             |    |    |      |   |                | 10x40 |              |     |    |     |  |
| RSDE-4480        | RSDE-4480-SS    | 480             |    |    |      |   |                | 11x40 |              |     |    |     |  |

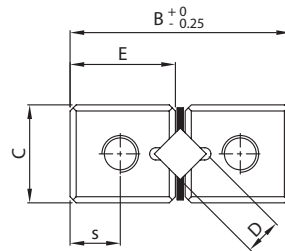
**Bold** = Short lead time item

Regular = Long lead time item - please request for price and delivery time



| r   | End holes |     |     | Weight (g) | Type             | Accessories                                                      |
|-----|-----------|-----|-----|------------|------------------|------------------------------------------------------------------|
|     | m1        | s   | t   |            |                  |                                                                  |
| 3.2 | M3        | 4.1 | 5.5 | 22         | <b>RSDE-3050</b> | Cage: KRE<br>End pieces: GB<br>Attachment screw: Type GD-3       |
|     |           |     |     | 34         | <b>RSDE-3075</b> |                                                                  |
|     |           |     |     | 46         | <b>RSDE-3100</b> |                                                                  |
|     |           |     |     | 58         | <b>RSDE-3125</b> |                                                                  |
|     |           |     |     | 70         | <b>RSDE-3150</b> |                                                                  |
|     |           |     |     | 82         | <b>RSDE-3175</b> |                                                                  |
|     |           |     |     | 94         | <b>RSDE-3200</b> |                                                                  |
|     |           |     |     | 106        | <b>RSDE-3225</b> |                                                                  |
|     |           |     |     | 118        | <b>RSDE-3250</b> |                                                                  |
|     |           |     |     | 130        | <b>RSDE-3275</b> |                                                                  |
|     |           |     |     | 142        | RSDE-3300        |                                                                  |
| 166 | RSDE-3350 |     |     |            |                  |                                                                  |
| 4.1 | M3        | 5   | 7   | 65         | RSDE-4080        | Cage: KRE, KREV<br>End pieces: GB<br>Attachment screw: Type GD-4 |
|     |           |     |     | 98         | RSDE-4120        |                                                                  |
|     |           |     |     | 131        | RSDE-4160        |                                                                  |
|     |           |     |     | 164        | RSDE-4200        |                                                                  |
|     |           |     |     | 197        | RSDE-4240        |                                                                  |
|     |           |     |     | 230        | RSDE-4280        |                                                                  |
|     |           |     |     | 263        | RSDE-4320        |                                                                  |
|     |           |     |     | 296        | RSDE-4360        |                                                                  |
|     |           |     |     | 329        | RSDE-4400        |                                                                  |
|     |           |     |     | 362        | RSDE-4440        |                                                                  |
|     |           |     |     | 395        | RSDE-4480        |                                                                  |

Units: mm

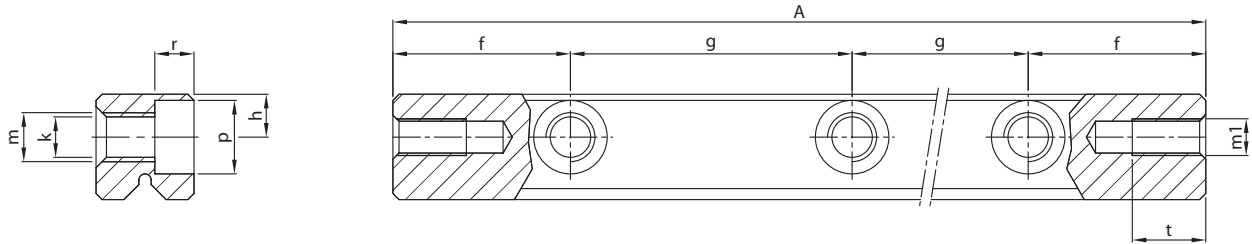


| Rail type  |                 | Main dimensions |    |    |      |   | Mounting holes |        |               |     |    |     |
|------------|-----------------|-----------------|----|----|------|---|----------------|--------|---------------|-----|----|-----|
| Standard   | Stainless steel | A               | B  | C  | E    | D | f              | g      | h             | k   | m  | p   |
| RSDE-6100  | RSDE-6100-SS    | 100             |    |    |      |   |                | 1x50   |               |     |    |     |
| RSDE-6150  | RSDE-6150-SS    | 150             |    |    |      |   |                | 2x50   |               |     |    |     |
| RSDE-6200  | RSDE-6200-SS    | 200             |    |    |      |   |                | 3x50   |               |     |    |     |
| RSDE-6250  | RSDE-6250-SS    | 250             |    |    |      |   |                | 4x50   |               |     |    |     |
| RSDE-6300  | RSDE-6300-SS    | 300             |    |    |      |   |                | 5x50   |               |     |    |     |
| RSDE-6350  | RSDE-6350-SS    | 350             |    |    |      |   |                | 6x50   |               |     |    |     |
| RSDE-6400  | RSDE-6400-SS    | 400             |    |    |      |   |                | 7x50   |               |     |    |     |
| RSDE-6450  | RSDE-6450-SS    | 450             | 31 | 15 | 14.9 | 6 | 25             | 8x50   | $6^{\pm 0.2}$ | 5.2 | M6 | 9.5 |
| RSDE-6500  | RSDE-6500-SS    | 500             |    |    |      |   |                | 9x50   |               |     |    |     |
| RSDE-6600  | RSDE-6600-SS    | 600             |    |    |      |   |                | 11x50  |               |     |    |     |
| RSDE-6700  | RSDE-6700-SS    | 700             |    |    |      |   |                | 13x50  |               |     |    |     |
| RSDE-6800  | RSDE-6800-SS    | 800             |    |    |      |   |                | 15x50  |               |     |    |     |
| RSDE-6900  | RSDE-6900-SS    | 900             |    |    |      |   |                | 17x50  |               |     |    |     |
| RSDE-61000 | RSDE-61000-SS   | 1000            |    |    |      |   |                | 19x50  |               |     |    |     |
| RSDE-61100 | RSDE-61100-SS   | 1100            |    |    |      |   |                | 21x50  |               |     |    |     |
| RSDE-61200 | RSDE-61200-SS   | 1200            |    |    |      |   |                | 23x50  |               |     |    |     |
| RSDE-9100  | RSDE-9100-SS    | 100             |    |    |      |   | 25             | 1x50   |               |     |    |     |
| RSDE-9200  | RSDE-9200-SS    | 200             |    |    |      |   |                | 1x100  |               |     |    |     |
| RSDE-9300  | RSDE-9300-SS    | 300             |    |    |      |   |                | 2x100  |               |     |    |     |
| RSDE-9400  | RSDE-9400-SS    | 400             |    |    |      |   |                | 3x100  |               |     |    |     |
| RSDE-9500  | RSDE-9500-SS    | 500             |    |    |      |   |                | 4x100  |               |     |    |     |
| RSDE-9600  | RSDE-9600-SS    | 600             | 44 | 22 | 21.3 | 9 | 50             | 5x100  | $9^{\pm 0.2}$ | 6.8 | M8 | 11  |
| RSDE-9700  | RSDE-9700-SS    | 700             |    |    |      |   |                | 6x100  |               |     |    |     |
| RSDE-9800  | RSDE-9800-SS    | 800             |    |    |      |   |                | 7x100  |               |     |    |     |
| RSDE-9900  | RSDE-9900-SS    | 900             |    |    |      |   |                | 8x100  |               |     |    |     |
| RSDE-91000 | RSDE-91000-SS   | 1000            |    |    |      |   |                | 9x100  |               |     |    |     |
| RSDE-91100 | RSDE-91100-SS   | 1100            |    |    |      |   |                | 10x100 |               |     |    |     |
| RSDE-91200 | RSDE-91200-SS   | 1200            |    |    |      |   |                | 11x100 |               |     |    |     |

**Bold** = Short lead time item

Regular = Long lead time item - please request for price and delivery time





| r    | End holes  |     |     | Weight (g) | Type       | Accessories                                                      |
|------|------------|-----|-----|------------|------------|------------------------------------------------------------------|
|      | m1         | s   | t   |            |            |                                                                  |
| 5.2  | M5         | 7   | 8.5 | 147        | RSDE-6100  | Cage: KRE, KREV<br>End pieces: GB<br>Attachment screw: Type GD-6 |
|      |            |     |     | 219        | RSDE-6150  |                                                                  |
|      |            |     |     | 293        | RSDE-6200  |                                                                  |
|      |            |     |     | 365        | RSDE-6250  |                                                                  |
|      |            |     |     | 439        | RSDE-6300  |                                                                  |
|      |            |     |     | 512        | RSDE-6350  |                                                                  |
|      |            |     |     | 585        | RSDE-6400  |                                                                  |
|      |            |     |     | 661        | RSDE-6450  |                                                                  |
|      |            |     |     | 731        | RSDE-6500  |                                                                  |
|      |            |     |     | 876        | RSDE-6600  |                                                                  |
|      |            |     |     | 1021       | RSDE-6700  |                                                                  |
|      |            |     |     | 1165       | RSDE-6800  |                                                                  |
|      |            |     |     | 1312       | RSDE-6900  |                                                                  |
|      |            |     |     | 1457       | RSDE-61000 |                                                                  |
|      |            |     |     | 1604       | RSDE-61100 |                                                                  |
| 1752 | RSDE-61200 |     |     |            |            |                                                                  |
| 6.2  | M6         | 9.9 | 10  | 315        | RSDE-9100  | Cage: RE<br>End pieces: GA<br>Attachment screw: Type GD-9        |
|      |            |     |     | 630        | RSDE-9200  |                                                                  |
|      |            |     |     | 945        | RSDE-9300  |                                                                  |
|      |            |     |     | 1260       | RSDE-9400  |                                                                  |
|      |            |     |     | 1575       | RSDE-9500  |                                                                  |
|      |            |     |     | 1890       | RSDE-9600  |                                                                  |
|      |            |     |     | 2205       | RSDE-9700  |                                                                  |
|      |            |     |     | 2520       | RSDE-9800  |                                                                  |
|      |            |     |     | 2835       | RSDE-9900  |                                                                  |
|      |            |     |     | 3150       | RSDE-91000 |                                                                  |
|      |            |     |     | 3466       | RSDE-91100 |                                                                  |
|      |            |     |     | 3780       | RSDE-91200 |                                                                  |

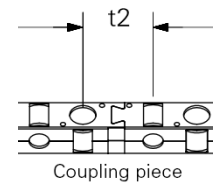
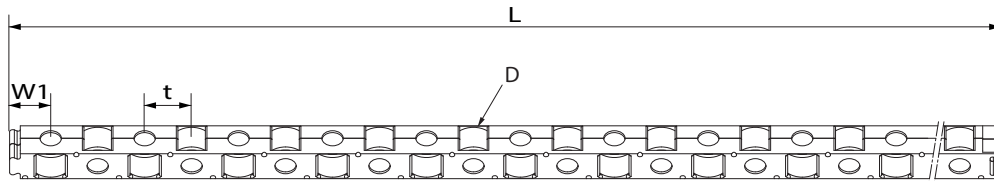
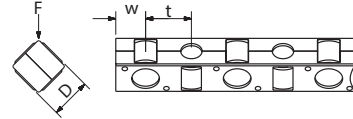
Units: mm

# ACCESSORIES

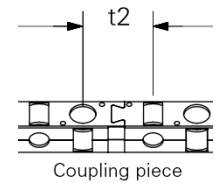
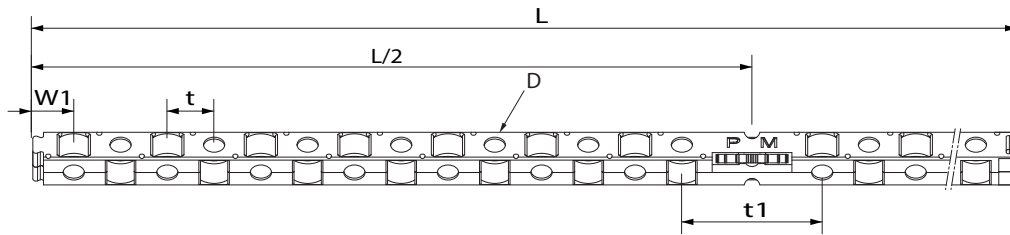
## FOR RAILS TYPE RSDE

### Roller cage type KRE + KREV size 3, 4 and 6 mm

- Rollers retained
- Suitable for horizontal and vertical installation
- KRE material POM
- KREV material PEEK (suitable for UHV application)

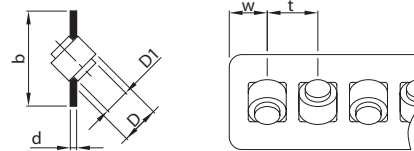


### Roller cage with anti-cage creep technology KRE-ACC



### Roller cage RE, size 3 – 9 mm

- Rollers retained
- Suitable for horizontal and vertical installation
- Material brass
- Available on request



| Cage type   |                 | Main dimensions |     |      |     |     |      |      |     |            |       | Accessories       |            |
|-------------|-----------------|-----------------|-----|------|-----|-----|------|------|-----|------------|-------|-------------------|------------|
| Standard    | Stainless steel | D               | D1  | b    | d   | t   | t1   | t2   | w   | w1         | L     | Suitable for rail | End pieces |
| R3xRE       | R3xRE-SS        | 3               | 2   | 7    | 0.5 | 5   | -    | -    | 2.5 | -          | -     | RSDE- 3           | GA         |
| R3xKRE      | R3xKRE-SS       | 3               | -   | -    | -   | 3.3 | -    | 5.1  | 2.2 | 2.95       | 101.6 |                   | GB         |
| R3xKRE-ACC  | R3xKRE-ACC-SS   | 3               | -   | -    | -   | 3.3 | 10.9 | 5.1  | 2.2 | 2.95       | 101.6 |                   | GB         |
| R3xKREV     | R3xKREV-SS      | 3               | -   | -    | -   | 3.3 | 10.9 | -    | 2.2 | on request |       |                   | GB         |
| R3xKREV-ACC | R3xKREV-ACC-SS  | 3               | -   | -    | -   | 3.3 | 10.9 | -    | 2.2 | on request |       | GB                |            |
| R4xRE       | R4xRE-SS        | 4               | 3   | 9    | 0.5 | 7   | -    | -    | 5   | -          | -     | RSDE- 4           | GA         |
| R4xKRE      | R4xKRE-SS       | 4               | -   | -    | -   | 4.4 | 13.2 | 6.7  | 2.8 | 3.85       | 135.3 |                   | GB         |
| R4xKRE-ACC  | R4xKRE-ACC-SS   | 4               | -   | -    | -   | 4.4 | 13.2 | 6.7  | 2.8 | 3.85       | 135.3 |                   | GB         |
| R4xKREV     | R4xKREV-SS      | 4               | -   | -    | -   | 4.5 | 13.2 | 6.7  | 2.8 | on request |       |                   | GB         |
| R4xKREV-ACC | R4xKREV-ACC-SS  | 4               | -   | -    | -   | 4.5 | 13.2 | 6.7  | 2.8 | on request |       | GB                |            |
| R6xRE       | R6xRE-SS        | 6               | 4.4 | 13.5 | 0.8 | 9   | -    | -    | 6   | -          | -     | RSDE- 6           | GA         |
| R6xKRE      | R6xKRE-SS       | 6               | -   | -    | -   | 6.6 | 19.8 | 10.6 | 4.3 | 6.3        | 204   |                   | GB         |
| R6xKRE-ACC  | R6xKRE-ACC-SS   | 6               | -   | -    | -   | 6.6 | 19.8 | 10.6 | 4.3 | 6.3        | 204   |                   | GB         |
| R6xKREV     | R6xKREV-SS      | 6               | -   | -    | -   | 6.7 | 19.8 | 10.6 | 4.3 | 6.3        | 204   |                   | GB         |
| R6xKREV-ACC | R6xKREV-ACC-SS  | 6               | -   | -    | -   | 6.7 | 19.8 | 10.6 | 4.3 | 6.3        | 204   |                   | GB         |

F = Load direction according to picture.

# PM RESEARCH AND PRODUCTION FACILITY



## PM B.V.

Galileistraat 2  
NL-7701 SK, Dedemsvaart  
Niederlande

Tel: +31 523 61 22 58  
info@pm.nl

[WWW.PM.NL](http://WWW.PM.NL)

2017