

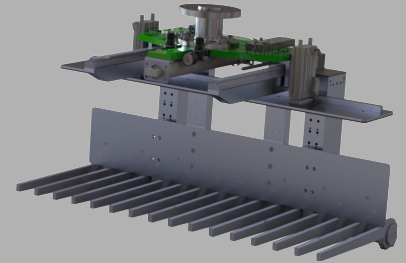
# Palletizing Loaders

## ARPG - Fork Loader

Applied Robotics Palletizing Gripper (ARPG) – Fork Gripper provides the ability to securely grasp any object off a roller conveyor and will reliably place it onto a pallet.

Advantages:

- Failsafe Bag Support
  - o Will not lose payload during loss of power or air.
- Robustness
  - o Engineered construction with select materials provides maximum strength in any industrial environment.
- Object Present Sensor(s)
  - o Provides assurance that the object is within the grasp of the gripper.
- Pallet Picking Capabilities
  - o Enables picking and placing of standard empty pallets without interrupting palletizing cycle.

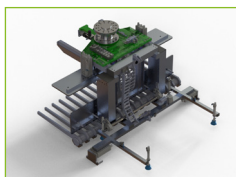
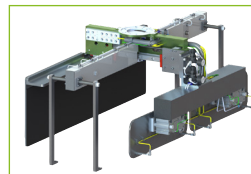
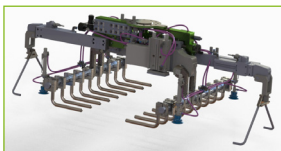


## SPECIFICATIONS

Model	Rated Payload	Supported Object Length	Supported Object Width	Object Height Range*	Weight**
	kg (lb)	mm (in)	mm (in)	mm (in)	kg (lb)
<b>ARPG25-F</b>	25 (55.12)	610 (24.02)	425 (16.73)	0 - 355 (0 - 13.98)	55 (121.25)
<b>ARPG55-F1</b>	55 (121.25)	1220 (48.03)	425 (16.73)	0 - 355 (0 - 13.98)	80 (176.37)

\* Loader weight may vary depending on specific configuration.  
 Shifted Object Height Range available upon request.  
 Additional Object Present Sensors available upon request.  
 \*\* Gripper weight may vary depending on specific configuration.  
 Operating pressure **4 - 6 bar**  
 Ambient temperature **5 - 60°C**  
 Sound emissions (sound pressure) **≤ 70 dB(A) in each direction**

## OPTIONS

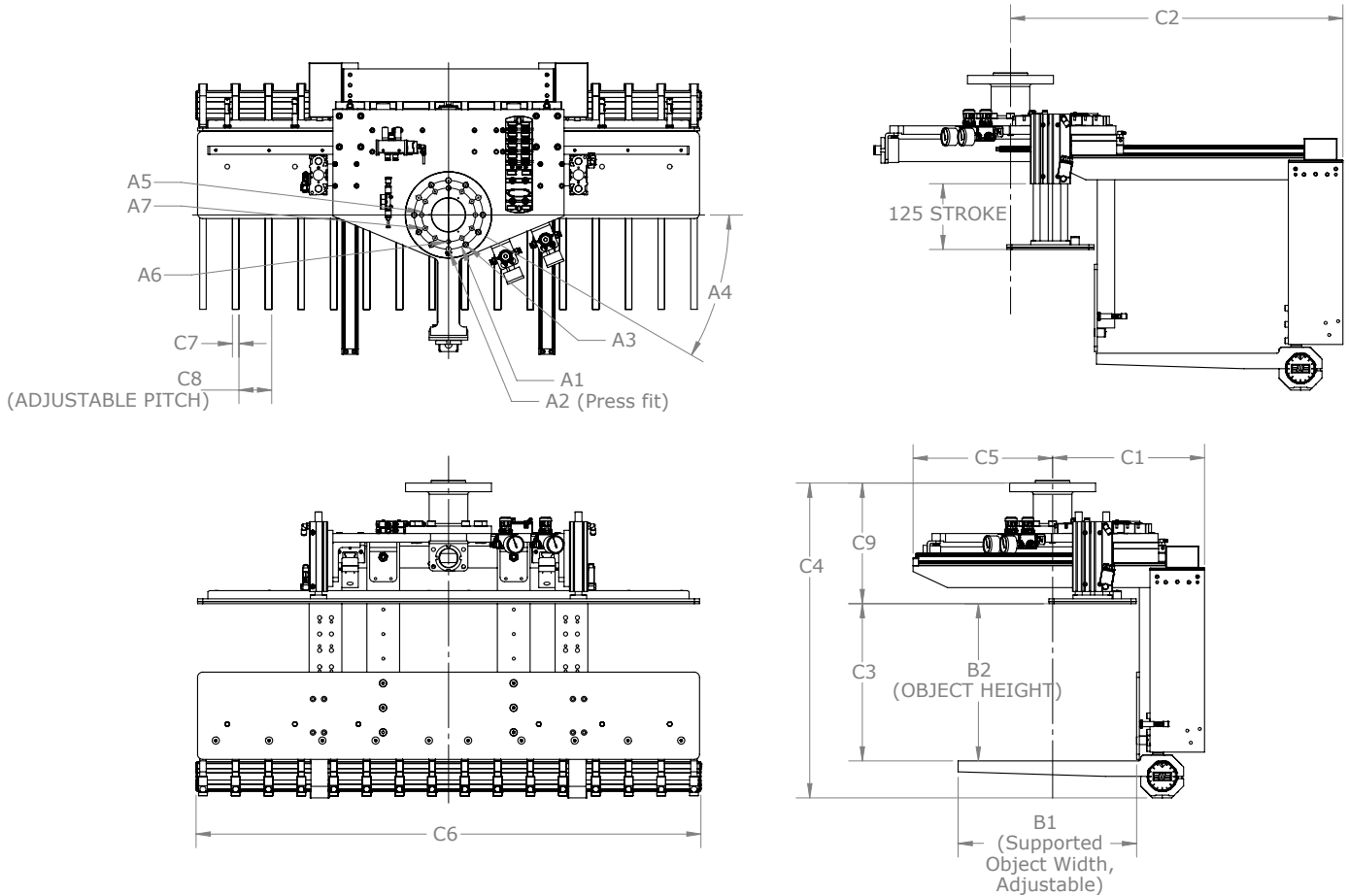


OPTION	BAG GRIPPER	BOX GRIPPER	FORK LOADER
DISCRETE I/O	•	•	•
PNEUMATIC CLAMP	•	-	-
PALLET PICKER	•	•	-
SHEET PICKER	•	•	•
AUTOMATIC WIDTH ADJUSTMENT	•	•	•

• On request      - Not applicable

# PRODUCT INFORMATION

# ARPG - Fork Loader



	Mounting Information							Opening Range (Object Width, OW)		Informational Dimensions								
	A1	A2	A3	A4	A5	A6	A7	B1	B2	C1	C2	C3	C4	C5	C6	C7	C8	C9
<b>ARPG25-F</b>	160 (6.30)	12 (0.47)	12.5 (0.49)	30°	125 (4.92)	10 (0.39)	10.5 (0.41)	0-420 (0-16.54)	0-365 (0-14.37)	355 (13.98)	775 (30.51)	137-366 (5.39-14.41)	733 (28.86)	325 (12.80)	588 (23.15)	15 (0.59)	76.2 (3.00)	280 (11.02)
<b>ARPG55-F1</b>	160 (6.30)	12 (0.47)	12.5 (0.49)	30°	125 (4.92)	10 (0.39)	10.5 (0.41)	0-420 (0-16.54)	0-365 (0-14.37)	355 (13.98)	775 (30.51)	137-366 (5.39-14.41)	733 (28.86)	325 (12.80)	1175 (46.26)	15 (0.59)	76.2 (3.00)	280 (11.02)

\* Dimensions are in millimeters (inches).

\*\*\* All dimensions are descriptive and subject to variation for technical upgrading. We reserve the right to make variations without prior notification.



**Applied Robotics**  
A COMPANY OF EFFECTO  
 Applied Robotics  
 648 Saratoga Road  
 Glenville, NY 12302 USA  
 Tel. +1 518 384 1000 Fax +1.5183841200  
 info@appliedrobotics.com  
 www.appliedrobotics.com



**EFFECTO**  
 EFFECTO GROUP S.p.A.  
 Via Roma, 141/143  
 28017 San Maurizio d'Opaglio (NO) - Italy  
 Tel. +39 0322 96142 Fax +39 0322 967453  
 info@effecto.com  
 www.effecto.com

