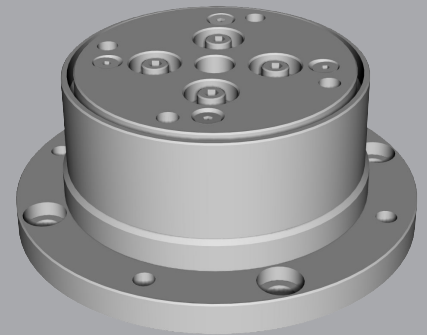


Compliance Device for press fitting with load-cell with flange - S SERIES

Center Master® compensates for errors (position and/or torsional) occurred during an assembly that various precision parts are press or loose fitted into the holes. Thereby, it reduces assembly failure, enhances product quality, and shortens the cycle time in production line.

Advantages

- Significant reduction of assembly failure due to center position errors
- Uniform press-fitting quality
- Wide range of applications
- Increased binding force between parts
- Saves assembly line construction time, reduces equipment investment cost
- Enhanced operation rate
- Longer life cycle of the assembler
- Simple maintenance



SPECIFICATIONS

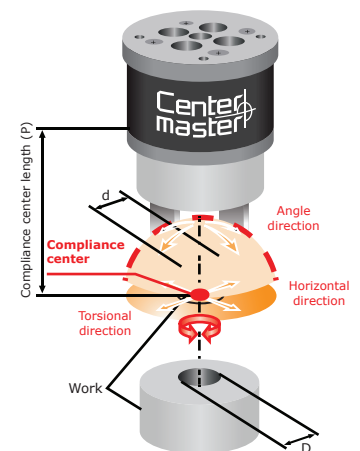
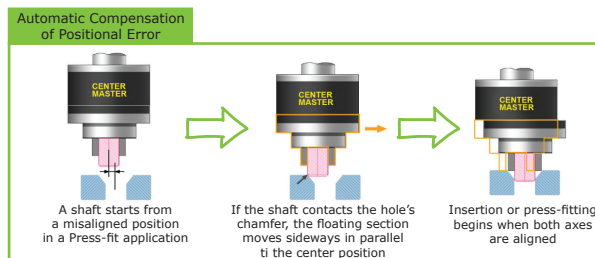
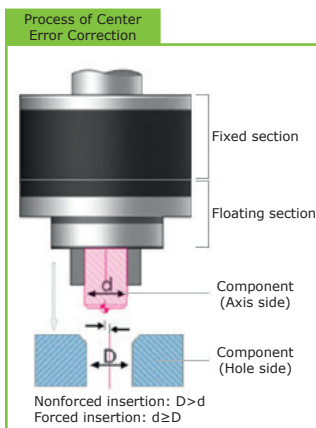
Model	Capacity	Compliance center length P	Payload	Compensation range		Elasticity coefficient (1)		Torsional direction Nm/rad (kgf.cm/rad)	Product weight kg (lb)	
				Position error mm (in)	Torsional angle [deg]	Axial direction N/mm (kgf/mm)	Tensile N/mm (kgf/mm)			
CCR-S4D-070-065-02	19.6 kN	70 mm	30 N	±2 (±0.08)	±6.6	1573.9 (160.6)	191.1 (19.5)	11.8 (1.2)	4.2 (42.9)	1.4 (3.08)
	1999 kgf	2.76 in	3 kgf							
CCR-S4D-070-065-04	39.2 kN	70 mm	30 N	±2 (±0.08)	±6.6	1573.9 (160.6)	191.1 (19.5)	11.8 (1.2)	4.2 (42.9)	1.4 (3.08)
	3997 kgf	2.76 in	3 kgf							
CCR-S4D-070-065-06	58.8 kN	70 mm	30 N	±2 (±0.08)	±6.6	1573.9 (160.6)	191.1 (19.5)	11.8 (1.2)	4.2 (42.9)	1.4 (3.08)
	5996 kgf	2.76 in	3 kgf							
CCR-S4D-090-078-02	19.6 kN	90 mm	40 N	±2 (±0.08)	±5.5	1217.2 (124.2)	225.4 (23.0)	12.4 (1.3)	6.1 (62.2)	2.1 (4.62)
	1999 kgf	3.54 in	4.1 kgf							
CCR-S4D-090-078-04	39.2 kN	90 mm	40 N	±2 (±0.08)	±5.5	1217.2 (124.2)	225.4 (23.0)	12.4 (1.3)	6.1 (62.2)	2.1 (4.62)
	3997 kgf	3.54 in	4.1 kgf							
CCR-S4D-090-078-06	58.8 kN	90 mm	40 N	±2 (±0.08)	±5.5	1217.2 (124.2)	225.4 (23.0)	12.4 (1.3)	6.1 (62.2)	2.1 (4.62)
	5996 kgf	3.54 in	4.1 kgf							
CCR-S4D-110-088-03	29.4 kN	110 mm	40 N	±2 (±0.08)	±4.6	1217.2 (124.2)	225.4 (23.0)	12.4 (1.3)	6.1 (62.2)	2.7 (5.94)
	2998 kgf	4.33 in	4.1 kgf							
CCR-S4D-110-088-06	58.8 kN	110 mm	40 N	±2 (±0.08)	±4.6	1217.2 (124.2)	225.4 (23.0)	12.4 (1.3)	6.1 (62.2)	2.7 (5.94)
	5996 kgf	4.33 in	4.1 kgf							
CCR-S4D-110-088-10	98.1 kN	110 mm	40 N	±2 (±0.08)	±4.6	1217.2 (124.2)	225.4 (23.0)	12.4 (1.3)	6.1 (62.2)	2.7 (5.94)
	10003 kgf	4.33 in	4.1 kgf							
CCR-S4D-140-108-03	29.4 kN	140 mm	80 N	±2 (±0.08)	±4.8	1840.4 (187.8)	407.7 (41.6)	15.1 (1.5)	7.7 (78.6)	4.1 (9.02)
	2998 kgf	5.51 in	8.2 kgf							
CCR-S4D-140-108-06	58.8 kN	140 mm	80 N	±2 (±0.08)	±4.8	1840.4 (187.8)	407.7 (41.6)	15.1 (1.5)	7.7 (78.6)	4.1 (9.02)
	5996 kgf	5.51 in	8.2 kgf							
CCR-S4D-140-108-10	98.1 kN	140 mm	80 N	±2 (±0.08)	±4.8	1840.4 (187.8)	407.7 (41.6)	15.1 (1.5)	7.7 (78.6)	4.1 (9.02)
	10003 kgf	5.51 in	8.2 kgf							
CCR-S4D-150-130-04	39.2 kN	150 mm	80 N	±2 (±0.08)	±4.2	1840.4 (187.8)	407.7 (41.6)	15.1 (1.5)	7.7 (78.6)	6.0 (13.2)
	3997 kgf	5.91 in	8.2 kgf							
CCR-S4D-150-130-07	68.6 kN	150 mm	80 N	±2 (±0.08)	±4.2	1840.4 (187.8)	407.7 (41.6)	15.1 (1.5)	7.7 (78.6)	6.0 (13.2)
	6995 kgf	5.91 in	8.2 kgf							
CCR-S4D-150-130-12	117.7 kN	150 mm	80 N	±2 (±0.08)	±4.2	1840.4 (187.8)	407.7 (41.6)	15.1 (1.5)	7.7 (78.6)	6.0 (13.2)
	12002 kgf	5.91 in	8.2 kgf							

(1) Elasticity coefficient indicates the elasticity at the compliance center (P) - the average value calculated until the plate runs into the stopper.

* Center Master® compensates up to +/-2 mm of positional error, but this value can vary depending on the chamfer size.

Ambient temperature: 0-55 °C (32-131 °F)

AUTOMATIC CORRECTION OF A POSITION ERROR

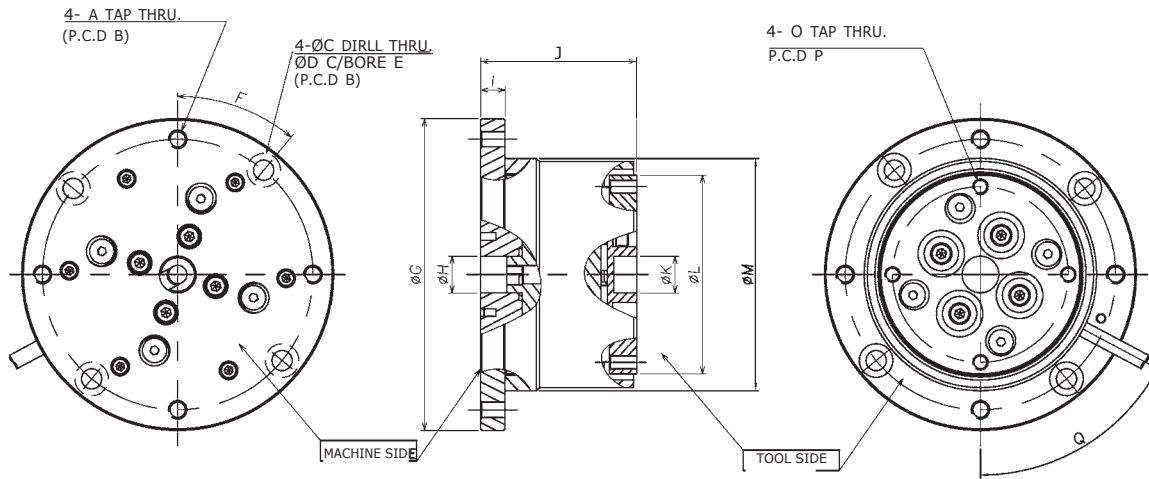


• **Compliance center length (P)**
The allowable tolerance of the P value is within ±5mm. If the P value exceeds the tolerable limit, the compensation function to correct misalignment may not work properly.

• **Payload**
Payload means the total weight of an assembly tool and a workpiece. Improper payload may affect to the device performance or life time.

PRODUCT INFORMATION

with flange - S SERIES



Electrical Specifications

Model Name	Refer to the mechanical specifications table
Rated Capacity(R.C.)	Refer to the mechanical specifications table (rated load)
Rated Output(R.O.)	Refer to each model's detailed specifications
Non-Linearity	<1.0% R.O.
Non-Repeatability	<0.5% R.O.
Zero Balance	<±1% R.O.
Compensated Temp. Range	0~40°C
Operating Temp. Range	0~70°C
Temp. Effect on Rated Output	<±0.1% LOAD/10°C
Temp. Effect Zero Balance	<±0.1% R.O./10°C
Thermal Resistance, Input/Output	700±10ohms/700±10ohms
Insulation Resistance (Min.)	2000M ohms/50V DC
Recommended Excitation Voltage	10V DC
Cable Length (4 Core, Shielded)	5m (standard)
Cable Connection	Brown EXC+ Yellow SIG- White EXC- Green SIG+

	A	B	C	D	E	F	G	H	I	J	K	L	M	N	O	P	Q		
CCR-S4D-070-065-02	M6	88.5	6.6	11	4	39.5°	102	12	+0.02 -0	8	51	12	+0.02 -0	65	76	-	M5	57.5	62°
CCR-S4D-070-065-04	M6	88.5	6.6	11	4	39.5°	102	12	+0.02 -0	8	51	12	+0.02 -0	65	76	-	M5	57.5	62°
CCR-S4D-070-065-06	M6	88.5	6.6	11	4	39.5°	102	12	+0.02 -0	8	51	12	+0.02 -0	65	76	-	M5	57.5	62°
CCR-S4D-090-078-02	M8	104.5	9	14	5	40.5°	121	12	+0.02 -0	10	53	12	+0.02 -0	78	89	-	M6	68	-27°
CCR-S4D-090-078-04	M8	104.5	9	14	5	40.5°	121	12	+0.02 -0	10	53	12	+0.02 -0	78	89	-	M6	68	-27°
CCR-S4D-090-078-06	M8	104.5	9	14	5	40.5°	121	12	+0.02 -0	10	53	12	+0.02 -0	78	89	-	M6	68	-27°
CCR-S4D-110-088-03	M8	114.5	9	14	5	40.5°	131	12	+0.02 -0	11	54.2	12	+0.02 -0	88	99	-	M8	74	-27°
CCR-S4D-110-088-06	M8	114.5	9	14	5	40.5°	131	12	+0.02 -0	11	54.2	12	+0.02 -0	88	99	-	M8	74	-27°
CCR-S4D-110-088-10	M8	114.5	9	14	5	40.5°	131	12	+0.02 -0	11	54.2	12	+0.02 -0	88	99	-	M8	74	-27°
CCR-S4D-140-108-03	M8	134.5	9	14	5	40.5°	151	16	+0.02 -0	11	57.55	16	+0.02 -0	108	119	-	M8	91	-27°
CCR-S4D-140-108-06	M8	134.5	9	14	5	40.5°	151	16	+0.02 -0	11	57.55	16	+0.02 -0	108	119	-	M8	91	-27°
CCR-S4D-140-108-10	M8	134.5	9	14	5	40.5°	151	16	+0.02 -0	11	57.55	16	+0.02 -0	108	119	-	M8	91	-27°
CCR-S4D-150-130-04	M8	155	9	14	6	22.5°	171	16	+0.02 -0	12	59.7	16	+0.02 -0	130	141	-	M8	112	-22.5°
CCR-S4D-150-130-07	M8	155	9	14	6	22.5°	171	16	+0.02 -0	12	59.7	16	+0.02 -0	130	141	-	M8	112	-22.5°
CCR-S4D-150-130-12	M8	155	9	14	6	22.5°	171	16	+0.02 -0	12	59.7	16	+0.02 -0	130	141	-	M8	112	-22.5°

* Dimensions are in millimeters.

** All dimensions are descriptive and subject to variation for technical upgrading. We reserve the right to make variations without prior notification



Applied Robotics
 648 Saratoga Road
 Glenville, NY 12302 USA
 Tel. +1 518 384 1000 Fax +1.5183841200
 info@appliedrobotics.com
 www.appliedrobotics.com



EFFECTO GROUP S.p.A.
 Via Roma, 141/143
 28017 San Maurizio d'Opaglio (NO) - Italy
 Tel. +39 0322 96142 Fax +39 0322 967453
 info@effecto.com
 www.effecto.com

