

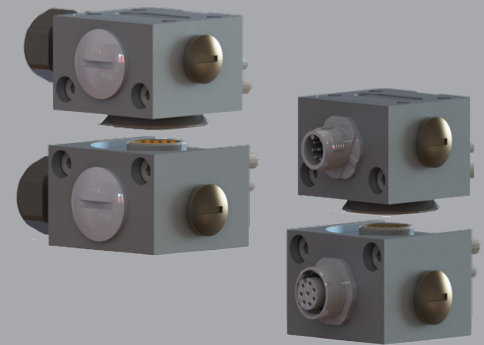
# XCHANGE™ Utility Module

## E50/E63 Electrical Modules

Electrical Modules pass signals during an automatic tool changing operation.

### Advantages:

- Flexible Connection Options
- Aluminum construction to reduce EMI
- Replacement probes for fast and easy maintenance
- IP65 when coupled



## SPECIFICATIONS

Model	Description	User Connection	Rated Current	Rated Voltage	Couple/Uncouple Sensor Interface	Weight**
			A	V		kg (lb)
E63-R-D-PG-12.05-00-N	Robot Adaptor - Strain Relief	Strain Relief (4.0 mm – 6.5 mm OD) 12x Max. Wire Gauge: 22 AWG	5 *	Cable Dependent	No	0.10 (0.21)
E63-T-D-PG-12.05-00-N	Tool Adaptor - Strain Relief	Strain Relief (4.0 mm – 6.5 mm OD) 12x Max. Wire Gauge: 22 AWG	5 *	Cable Dependent	N/A	0.10 (0.21)
E63-R-D-M12-8.05-00-N	Robot Adaptor - M12 Male	8 PIN, M12 A-CODED	4	250	No	0.10 (0.21)
E63-T-D-M12-8.05-00-N	Tool Adaptor - M12 Female	8 SOC, M12 A-CODED	4	250	N/A	0.10 (0.21)
E63-R-D-M8-8.05-00-N	Robot Adaptor - M8 Female	8 SOC, M8 A-CODED	4	250	No	0.10 (0.21)
E63-T-D-M8-8.05-00-N	Tool Adaptor - M8 Male	8 PIN, M8 A-CODED	4	250	N/A	0.10 (0.21)
E63-R-D-M8-8.05-00-N-0.3	Robot Adaptor - M8 Female Cable	8 SOC, M8 A-CODED	4	250	No	0.11 (0.25)
E63-T-D-N-0.05-15-N ***	Tool Adaptor - Tool Identification	N/A (Tool ID Only) Up to 15 Tools	1	28	N/A	0.10 (0.21)

\* Rated Current may change based upon cable/wire rating.

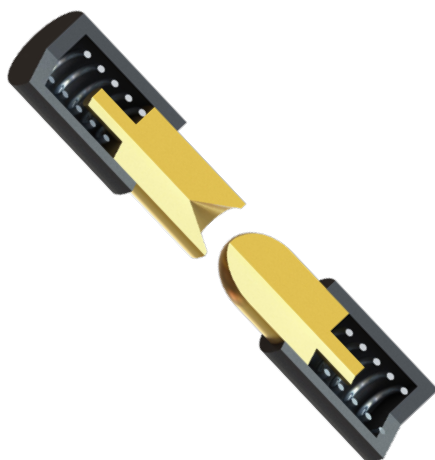
\*\* Module weight may vary depending on specific configuration.

\*\*\* Tool Identification Module can be used with any Robot Adaptor Modules listed above it.

Operating Temperature: **5 - 60 °C (40 - 140 °F)**

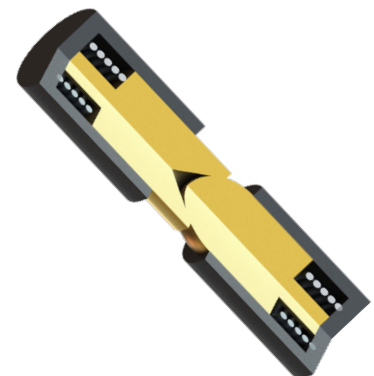
Noise Emissions (Sound Pressure): **≤ 70 dB(A) in any direction**

## CONTACT PROBE TECHNOLOGY



Applied Robotics XCHANGE™ electrical modules use spring loaded contact probes for their many benefits:

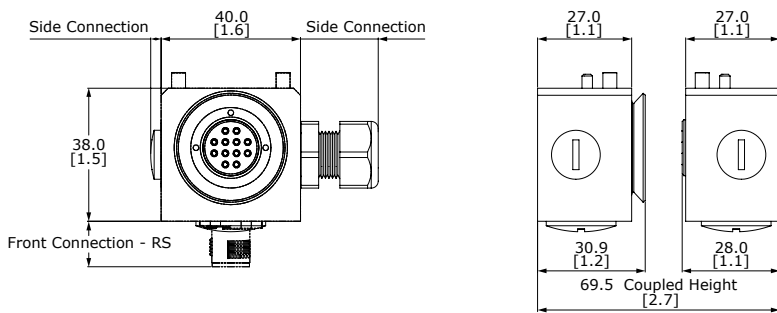
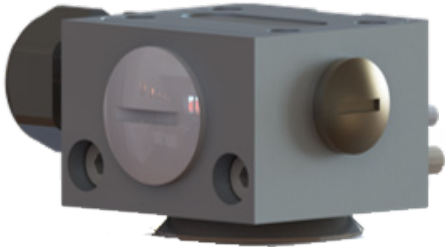
- Low contact resistance
- High mating cycles
- Limited debris buildup
- Minimal maintenance



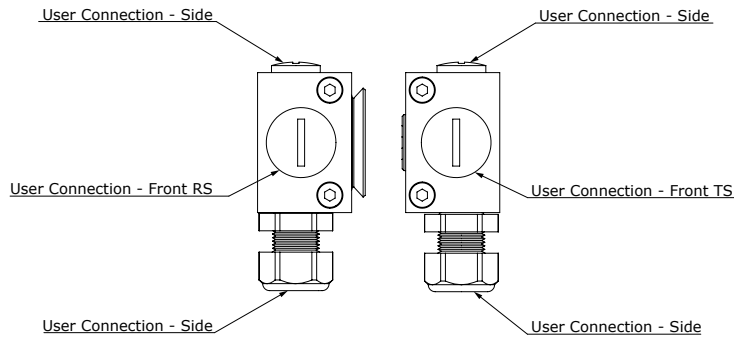
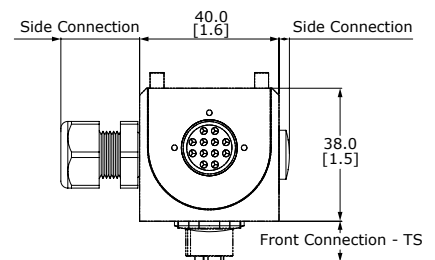
\* Images are visual representations only.

# PRODUCT INFORMATION

## ROBOT ADAPTOR MODULE



## TOOL ADAPTOR MODULE



### Mounting Hardware Included:

- 2x M3 x 8 Dowels
- 2x M4 x 45 SHCS

Model	User Connection - Side	Side Connection	User Connection - Front RS	Front Connection - RS	User Connection - Front TS	Front Connection - TS
Strain Relief	Strain Relief (4.0 mm – 6.5 mm OD)*** 12x Max. Wire Gauge: 22 AWG	3.0 [0.12] or 22.3*** [0.88]	Cap	3.0 [0.12]	Cap	3.0 [0.12]
M12	Cap	3.0 [0.12]	8 PIN, M12 A-CODED	13.0 [0.51]	8 SOC, M12 A-CODED	11.6 [0.45]
M8	Cap	3.0 [0.12]	8 SOC, M8 A-CODED	11.9 [0.47]	8 PIN, M8 A-CODED	11.9 [0.47]
M8 - Cable	Cap	3.0 [0.12]	8 SOC, M8 A-CODED	300.0**** [11.81]	N/A	N/A
Tool Identification	Cap	3.0 [0.12]	N/A	N/A	Tool Identification	25.0 [0.98]

\* Dimensions are in millimeters (inches).

\*\* All dimensions are descriptive and subject to variation for technical upgrading. We reserve the right to make variations without prior notification.

\*\*\* Strain Relief can be moved to either side of the module. The other side will have a Cap.

\*\*\*\* Flexible cable out the front of the module.



Applied Robotics  
6DDWRD5RDG  
OH0LOH8\$



MO)D[

LOR0SSOLH0ERWLF0RP  
0SSOLH0ERWLF0RP

01.2023\_Rev.03\_EU