

# Electric Parallel Grippers

## EIG2-06002 2-Finger

EIG is an electric 2-finger parallel gripper that is equipped with two symmetrically parallel fingers.

### Advantages

- Compact size
- Slim rectangular body with five installation positions for flexible mounting
- Grip control: force and position adjustment
- Quick open/close time with speed adjustment
- Grip feedback and part detection: gripper status can be read at the PLC/Controller and visualized on the unit via LED's
- Multiple communication modes: the gripper supports Modbus RTU protocol and IO mode control. Other protocols such as USB and ETHERNET can be implemented through a protocol converter.
- Grip actuation via an external control box.



## SPECIFICATIONS

| Model             | Stroke per Jaw  | Gripping Force per Jaw      | Total Gripping Force        | Opening/Closing Time | Nominal Voltage | Nominal Current | Max Current | Repeatability (Positioning) | Recommended Workpiece Weight* | Weight             |
|-------------------|-----------------|-----------------------------|-----------------------------|----------------------|-----------------|-----------------|-------------|-----------------------------|-------------------------------|--------------------|
| <b>EIG2-06002</b> | 6 mm<br>0.24 in | 0.8 - 2 N<br>0.18 - 0.45 lb | 1.6 - 4 N<br>0.36 - 0.90 lb | 0.2 / 0.2 s          | 24 V DC ± 10%   | 0.20 A          | 0.50 A      | ± 0.02 mm<br>± 0.001 in     | 0.05 kg<br>0.11 lb            | 0.15 kg<br>0.33 lb |

\* Recommended workpiece weight depends on the shape of the part, the material and friction of the contact surface and the acceleration of the motion.

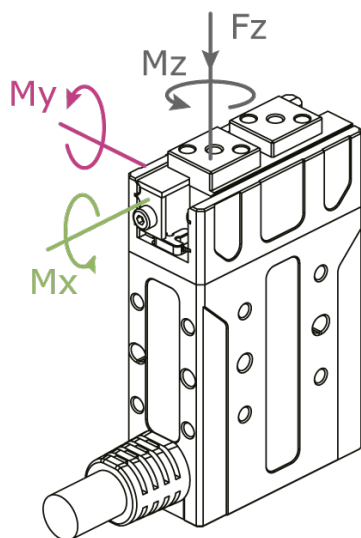
Communication Interface **Standard: Modbus RTU (RS485), Digital I/O**  
**Optional: TCP/IP, USB2.0, CAN2.0A, PROFINET, EtherCAT**

IP Protection Class **IP 40**

Noise Emission (Sound Pressure) **≤ 40 dB(A) in any direction**

Recommended operating environment **0-40 °C (32-104 °F), < 85% RH**

For this type of gripper the use of the standard fingers is recommended.



### Allowable vertical load (static)

Fz 35 N (7.87 lb)

### Allowable moment (static)

Mx 0.2 Nm (1.77 in-lb)

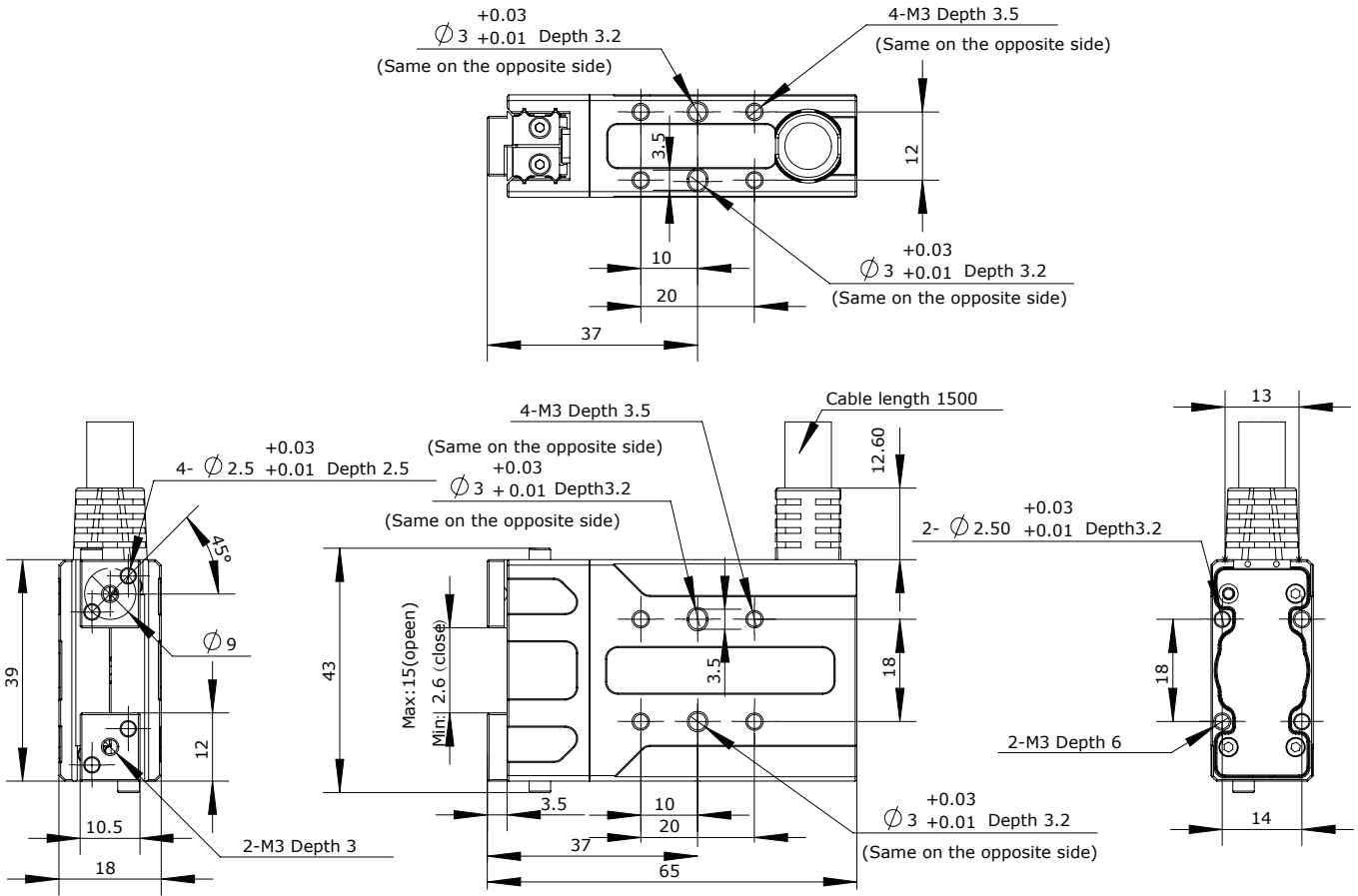
My 0.17 Nm (1.50 in-lb)

Mz 0.2 Nm (1.77 in-lb)

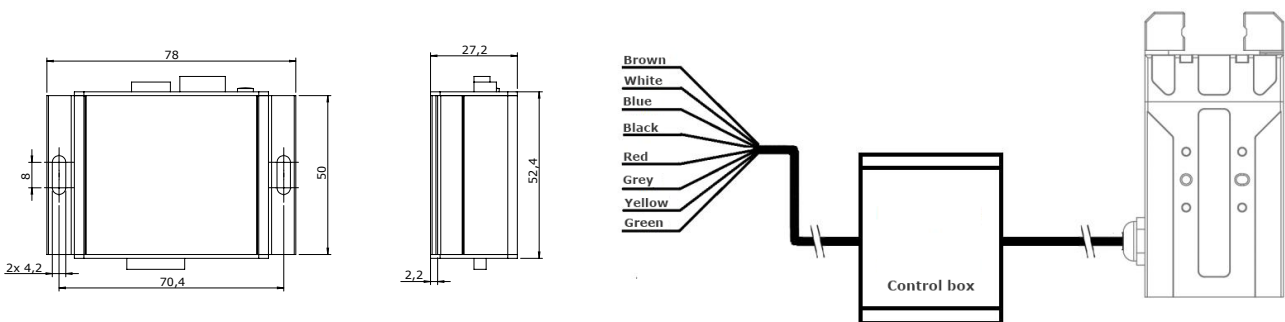


# PRODUCT INFORMATION

# EIG2-06002 2-Finger



## CONTROL BOX AND CONNECTION



Applied Robotics  
 A COMPANY OF EFFECTO  
 Applied Robotics  
 648 Saratoga Road  
 Glenville, NY 12302 USA  
 Tel. +1 518 384 1000 Fax +1.5183841200  
 info@appliedrobotics.com  
 www.appliedrobotics.com



EFFECTO GROUP S.p.A.  
 Via Roma, 141/143  
 28017 San Maurizio d'Opaglio (NO) - Italy  
 Tel. +39 0322 96142 Fax +39 0322 967453  
 info@effecto.com  
 www.effecto.com



01.2023\_Rev.02\_EU