

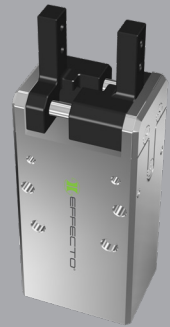
Electro-Magnetic Parallel Grippers

EMG2-02005 2-Finger

EMG is an electro-magnetic 2-finger parallel gripper that is equipped with symmetrically actuated parallel jaws.

Advantages

- Compact size design with two installation positions for flexible mounting
- Grip actuation via an external control box
- Quick open/close actuation time
- Optional open/close position feedback provided by external proximity sensors.



SPECIFICATIONS

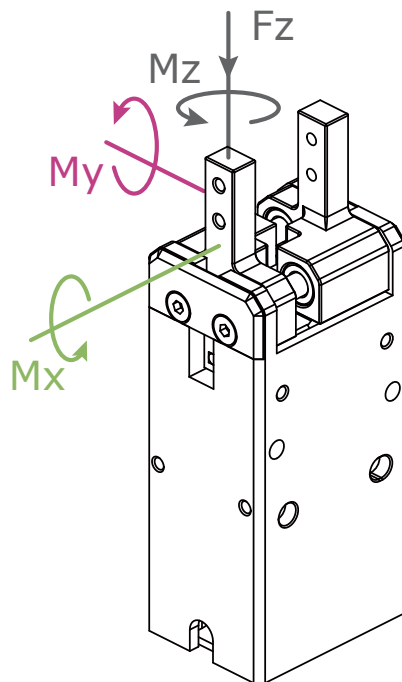
Model	Stroke per Jaw	Gripping Force per Jaw	Total Gripping Force	Opening/Closing Time	Nominal Voltage	Nominal Current	Max Current	Repeatability (Positioning)	Recommended Workpiece Weight	Weight
EMG2-02005	2 mm 0.079 in	3.5 - 5 N 0.79 - 1.12 lb	7 - 10 N 1.57 - 2.25 lb	0.03 / 0.03 s	24 V DC \pm 10%	0.1 A	2.5 A	\pm 0.01 mm \pm 0.0004 in	0.05 kg 0.11 lb	0.20 kg 0.44 lb

Communication Interface **Digital I/O**

IP Protection Class **IP 40**

Noise Emission (Sound Pressure) \leq **40 dB(A) in any direction**

Recommended operating environment **0-40 °C (32-104 °F), < 85% RH**



Allowable vertical load (static)

Fz 150 N (33.72 lb)

Allowable moment (static)

Mx 0.62 Nm (5.49 in-lb)

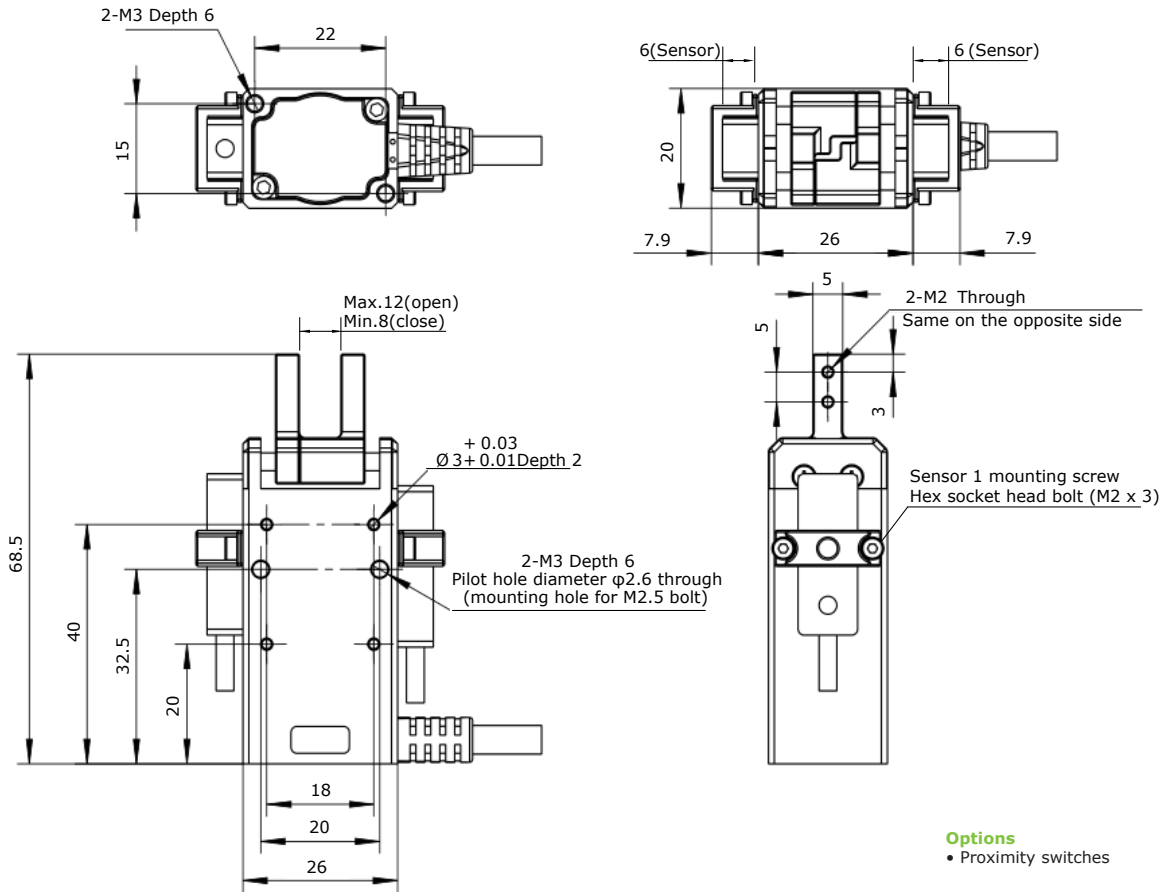
My 0.62 Nm (5.49 in-lb)

Mz 0.62 Nm (5.49 in-lb)

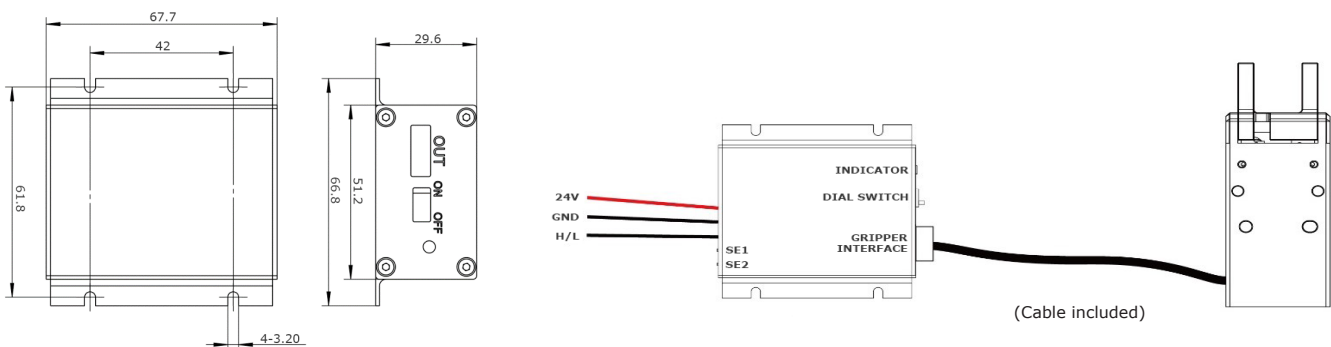


PRODUCT INFORMATION

EMG2-02005 2-Finger



CONTROL BOX AND CONNECTION



* Dimensions are in millimeters.

** All dimensions are descriptive and subject to variation for technical upgrading. We reserve the right to make variations without prior notification



Applied Robotics

648 Saratoga Road

Glennville, NY 12302 USA

Tel. +1 518 384 1000 Fax +1.5183841200

info@appliedrobotics.com

www.appliedrobotics.com



EFFECTO GROUP S.p.A.

Via Roma, 141/143

28017 San Maurizio d'Opaglio (NO) - Italy

Tel. +39 0322 96142 Fax +39 0322 967453

info@effecto.com

www.effecto.com



01.2023_Rev.02_EU