

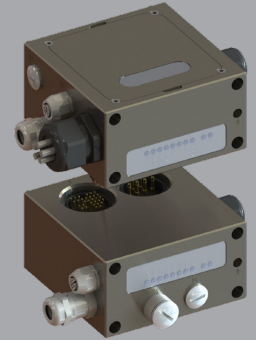
XCHANGE™ Utility Module

Heavy Duty Electrical Modules - Communications

Electrical Modules pass electrical signals during an automatic tool changing operation.

Advantages:

- Multiple Protocols: Profinet, Ethernet/IP, DeviceNet, Profibus, etc.
- Aluminum construction to prevent EMI
- Integrated PCB for Quality Assurance and Consistency
- Galvanic insulation between US (Signal Power) and UA (Actuator Power)
- Live Power Manager (LPM)
- Flexible connections via cables with connectors and Wall Connectors (Included)
- Easy Maintenance via Board Terminals and Connectors
- Full management of the Tool Changer Signals and Passthru Signals (Including Single or Dual Channel Safety Signals)
- Quick and easy troubleshooting via LED Visualization
- Tool Identification via 4 Bit (Optional 8 Bit)
- Low Maintenance and Low MTTR
- IP Rating: IP65 (When Coupled)



SPECIFICATIONS

Model **	Description	User Connection	Rated Current	Rated Voltage	Couple/Uncouple Sensor Interface	Tool Identification Included	Weight***
			A	V (AC/DC)			
E-R-EIP-M12-4.25/4.05-P-015-xxx	Robot Adaptor - Ethernet/IP and/or Profinet	7/8 4 PIN	10	600	Yes	Yes	1.55 (3.41)
		M12 4 PIN D-CODED	4	48/60			
E-T-EIP-M12-4.25/4.05-015-xxx	Tool Adaptor - Ethernet/IP and/or Profinet	7/8 4 SOC	10	600	N/A	Yes	1.70 (3.74)
		M12 4 PIN D-CODED	4	48/60			
E-R-PN-M12-5.25/4.05-P-015-xxx	Robot Adaptor - Ethernet/IP and/or Profinet	7/8 5 PIN	4	300	Yes	Yes	1.55 (3.41)
		M12 4 PIN D-CODED	4	48/60			
E-T-PN-M12-5.25/4.05-015-xxx	Tool Adaptor - Ethernet/IP and/or Profinet	7/8 5 SOC	4	300	N/A	Yes	1.70 (3.74)
		M12 4 PIN D-CODED	4	48/60			
E-R-PN-PP-5.25/4.05-P-015-xxx	Robot Adaptor - Profinet - Push/Pull Connections	Push/Pull 5 PIN	16	400	Yes	Yes	1.55 (3.41)
		Push/Pull RJ45 10 PIN	1	72			
E-T-PN-PP-5.25/4.05-015-xxx	Tool Adaptor - Profinet - Push/Pull Connections	Push/Pull 5 PIN	16	400	N/A	Yes	1.70 (3.74)
		Push/Pull RJ45 10 PIN	1	72			
E-R-PN-M12-L5.25/4.05-P-015-xxx	Robot Adaptor - Profinet - M12 Connections	M12 5 PIN L-CODED	16	63	Yes	Yes	1.55 (3.41)
		M12 4 PIN D-CODED	4	48/60			
E-T-PN-M12-L5.25/4.05-015-xxx	Tool Adaptor - Profinet - M12 Connections	M12 5 SOC L-CODED	16	63	N/A	Yes	1.70 (3.74)
		M12 4 SOC D-CODED	4	48/60			
E-R-DN-7/8-8.25/1.05-P-015-xxx	Robot Adaptor - DeviceNet	7/8 4 PIN	4	250	Yes	Yes	1.55 (3.41)
		7/8 5 PIN	4	300			
E-T-DN-7/8-8.25/1.05-015-xxx	Tool Adaptor - DeviceNet	7/8 4 SOC	4	250	N/A	Yes	1.70 (3.74)
		7/8 5 SOC	4	300			

* Module weight may vary depending on specific configuration.

Operating Temperature: **5 - 60 °C (40 - 140 °F)**

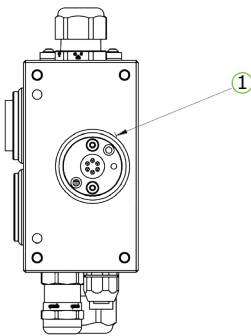
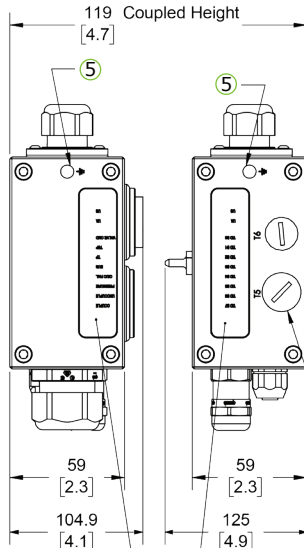
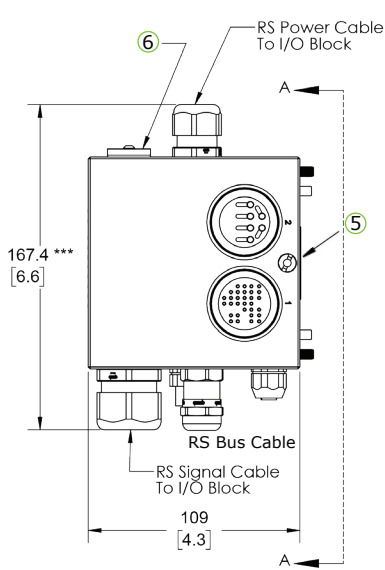
Noise Emissions (Sound Pressure): **≤ 70 dB(A) in any direction**

FEATURES

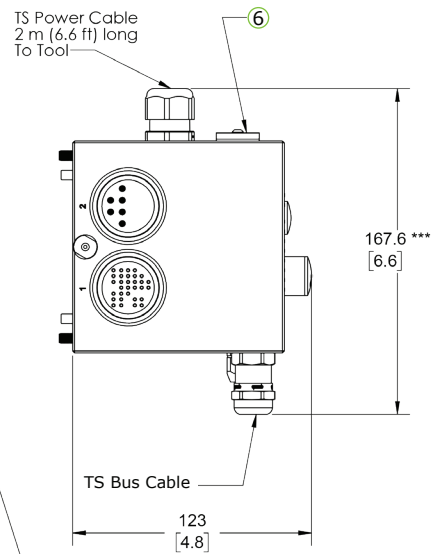
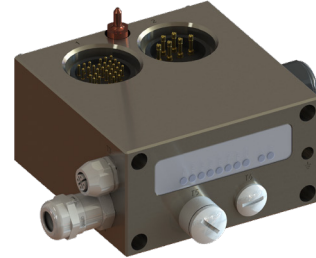
- ① Couple/Uncouple Interface, compatible with all Applied Robotics Tool Changers
- ② Tool Changer Status Signals (Dependent on Configuration)
- ③ LED Visualization Couple/Uncouple, Tool Present, Tool Stand Present, Tool Identification
- ④ IP2x (Finger Protection) on Robot Side Power Contacts
- ⑤ Functional Earth (FE) Connection and Passthru with M8 Lug Interface
- ⑥ Additional I/O or Weld Gun Feedback via Optional Connection Push/Pull, M23, Mil-Spec (MS), Souriau, etc.
- ⑦ 4-Bit Tool ID Rotary Selector (15 Tools)

PRODUCT INFORMATION

ROBOT ADAPTOR MODULE



TOOL ADAPTOR MODULE



Works with any brand of I/O Block, containing specified connection.

Mounting Hardware Included

* Dimensions are in millimeters (inches).

** All dimensions are descriptive and subject to variation for technical upgrading. We reserve the right to make variations without prior notification.

*** Dimensions to the end of the Strain Relief. Cable is not included in measurement.



Applied Robotics™
A COMPANY OF EFFECTO®
Applied Robotics
648 Saratoga Road
Glenville, NY 12302 USA
Tel. +1 518 384 1000 Fax +1.5183841200
info@appliedrobotics.com
www.appliedrobotics.com



EFFECTO
EFFECTO GROUP S.p.A.
Via Roma, 141/143
28017 San Maurizio d'Opaglio (NO) - Italy
Tel. +39 0322 96142 Fax +39 0322 967453
info@effecto.com
www.effecto.com

