

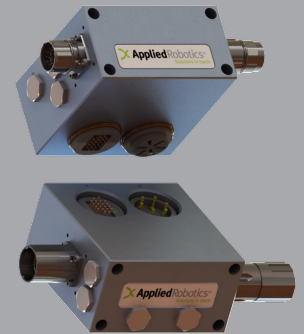
XCHANGE™ Utility Module

Heavy Duty Electrical Modules - Discrete

Electrical Modules pass electrical signals during an automatic tool changing operation.

Advantages:

- Aluminum construction to prevent EMI
- Integrated PCB for Quality Assurance and Consistency
- Galvanic insulation between US (Signal Power) and UA (Actuator Power)
- Live Power Manager (LPM)
- Flexible User Connections - M23, Mil Spec (MS), etc.
- Easy maintenance via Board Terminals and Connectors
- Full management of the Tool Changer Signals and Passthru Signals (Including Single or Dual Channel Safety Signals)
- Quick and easy troubleshooting via LED Visualization
- Tool Identification via 4 Bit (Optional 8 Bit)
- Low Maintenance and Low MTTR
- IP Rating: IP65 (when Coupled)
- Single-Channel Safety Circuit ("TSM") or Dual Channel ("SCM") Safety Circuit Configuration (Optional)



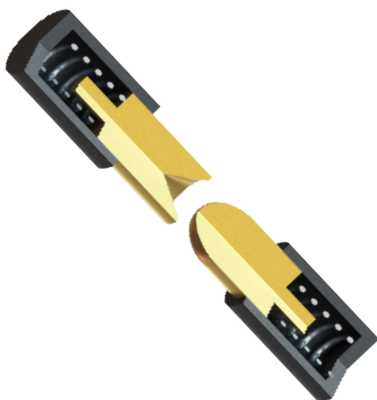
SPECIFICATIONS

Model	Description	User Connection	Rated Current	Rated Voltage	Couple/Uncouple Sensor Interface, TSM and Tool IB Included	Weight** kg (lb)
			A	V (AC/DC)		
E-R-D-M23-31.05-000-N	Robot Adaptor - Discrete M23	2x 17 PIN, M23 "E" CW	5	125	Optional	1.08 (2.38)
E-T-D-M23-31.05-000-N	Tool Adaptor - Discrete M23	2x 17 SOC, M23 "P" CCW	5	125	Optional	1.17 (2.58)
E-R-D-MS-31.05-000-N	Robot Adaptor - Discrete MS	2x 17 PIN, MS3102E20-29P	5	500/700	Optional	1.08 (2.38)
E-T-D-MS-31.05-000-N	Tool Adaptor - Discrete MS	2x 17 SOC, MS3102E20-29S	5	500/700	Optional	1.17 (2.58)
E-R-D-M23-6.25/7.05-P-015-xxx	Robot Adaptor - Discrete M23 with Power	17 PIN, M23 "E" CW 6 PIN, M23 "E" CW	5 16	125 630	Yes	1.08 (2.38)
E-T-D-M23-6.25/9.05-015-xxx	Tool Adaptor - Discrete M23 with Power	17 SOC, M23 "P" CCW 6 SOC, M23 "P" CCW	5 16	400 48	Yes	1.17 (2.58)
E-R-D-MS-6.25/7.05-P-015-xxx	Robot Adaptor - Discrete MS with Power	17 PIN, MS3102E20-29P 6 PIN, MS3102A20-17P	5 22	500/700 500	Yes	1.08 (2.38)
E-T-D-MS-6.25/9.05-015-xxx	Tool Adaptor - Discrete MS with Power	17 SOC, MS3102E20-29S 6 SOC, MS3102A20-17S	5 22	500/700 500	Yes	1.17 (2.58)

*Module weight may vary depending on specific configuration.

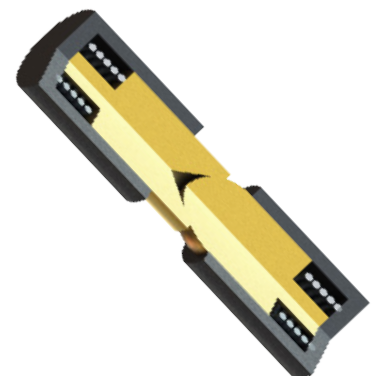
Operating Temperature: **5 - 60 °C (40 - 140 °F)**
Noise Emissions (Sound Pressure): **≤ 70 dB(A) in any direction**

FEATURES



Applied Robotics XCHANGE™ electrical modules use spring loaded contact probes for their many benefits:

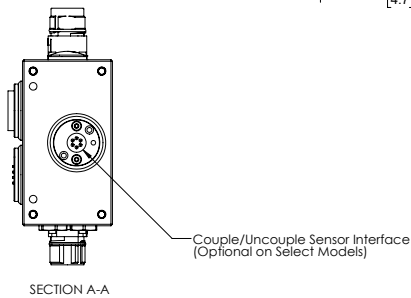
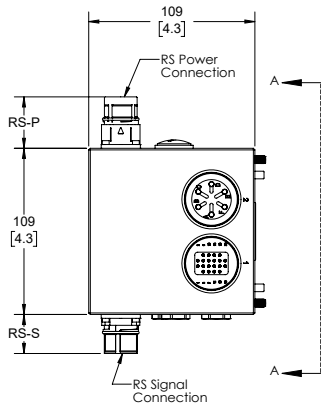
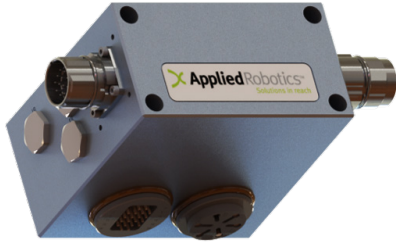
- Low contact resistance
- High mating cycles
- Limited debris buildup
- Minimal maintenance



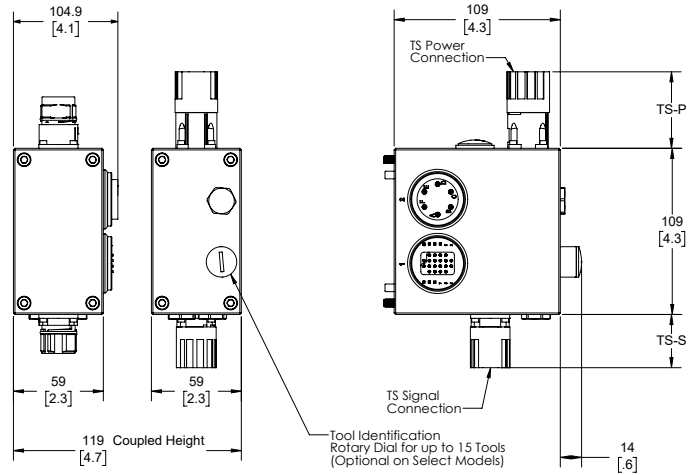
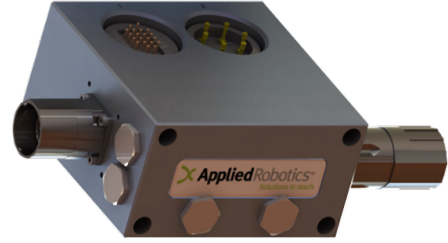
* Images are visual representations only.

PRODUCT INFORMATION

ROBOT ADAPTOR MODULE



TOOL ADAPTOR MODULE



Mounting Hardware Included

MODEL	RS-P	RS-S	TS-P	TS-S
M23	25 (1.0)	25.6 (1.0)	34.9 (1.4)	34.9 (1.4)
MS	39.8 (1.6)	39.8 (1.6)	39.8 (1.6)	39.8 (1.6)
M23 with Power	33.8 (1.3)	25.6 (1.0)	50.2 (2.0)	34.9 (1.4)
MS with Power	39.8 (1.6)	39.8 (1.6)	39.8 (1.6)	39.8 (1.6)

* Dimensions are in millimeters (inches).

** All dimensions are descriptive and subject to variation for technical upgrading. We reserve the right to make variations without prior notification.



Applied Robotics
648 Saratoga Road
Glenville, NY 12302 USA
Tel. +1 518 384 1000 Fax +1.5183841200
info@appliedrobotics.com
www.appliedrobotics.com



EFFECTO GROUP S.p.A.
Via Roma, 141/143
28017 San Maurizio d'Opaglio (NO) - Italy
Tel. +39 0322 96142 Fax +39 0322 967453
info@effecto.com
www.effecto.com

