

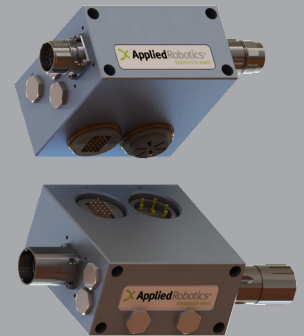
XCHANGE™ Utility Module

Heavy Duty Electrical Modules - Servo

Electrical Modules pass electrical signals during an automatic tool changing operation.

Advantages:

- Aluminum construction to prevent EMI
- Flexible User Connections -M23, Mil Spec (MS), etc.
- Physical Separation of motor power and encoder/resolver/serial signals
- Gold Plated Spring Probe Contacts (low maintenance and low MTTR)
- IP2x (Finger Protection) on Robot Side Power Contacts
- Replacement probes for fast and easy maintenance
- IP Rating: IP65 (when Coupled)



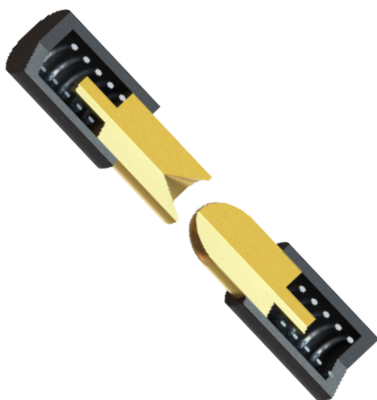
SPECIFICATIONS

Model	Description	User Connection	Rated Current		Rated Voltage		Weight**	
			A		V (AC/DC)		kg (lb)	
E-R-S-M23-6.25/12.05	Robot Adaptor - Servo 12 PIN M23	12 PIN, M23 20° CCW 6 PIN, M23 "E" CW	5		125		1.08	
			16		630		(2.38)	
E-T-S-M23-6.25/12.05	Tool Adaptor - Servo 12 PIN M23	12 SOC, M23 "E" 20° CW 6 SOC, M23 "P" CCW	5		125		1.17	
			16		630		(2.58)	
E-R-S-M23-6.25/17.05	Robot Adaptor - Servo 17 PIN M23	17 PIN, M23 "E" CW 6 PIN, M23 "E" CW	5		125		1.08	
			16		630		(2.38)	
E-T-S-M23-6.25/17.05	Tool Adaptor - Servo 17 PIN M23	17 SOC, M23 "P" CCW 6 SOC, M23 "P" CCW	5		125		1.17	
			16		630		(2.58)	
E-R-S-MS-6.25/17.05	Robot Adaptor - Servo MS	17 PIN, MS3102E20-29P 6 PIN, MS3102A20-19P	5		500/700		1.08	
			22		500		(2.38)	
E-T-S-MS-6.25/17.05	Tool Adaptor - Servo MS	17 SOC, MS3102E20-29S 6 SOC, MS3102A20-17S	5		500/700		1.17	
			22		500		(2.58)	

* Module weight may vary depending on specific configuration.

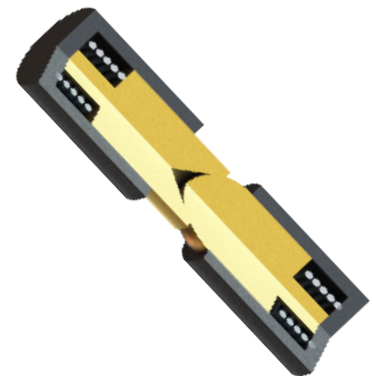
Operating Temperature: **5 - 60 °C (40 - 140 °F)**
Noise Emissions (Sound Pressure): **≤ 70 dB(A) in any direction**

FEATURES



Applied Robotics XCHANGE™ electrical modules use spring loaded contact probes for their many benefits:

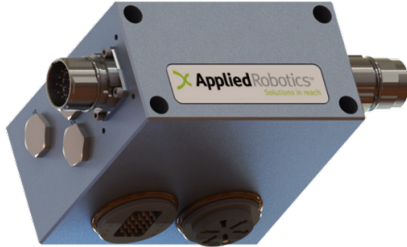
- Low contact resistance
- High mating cycles
- Limited debris buildup
- Minimal maintenance



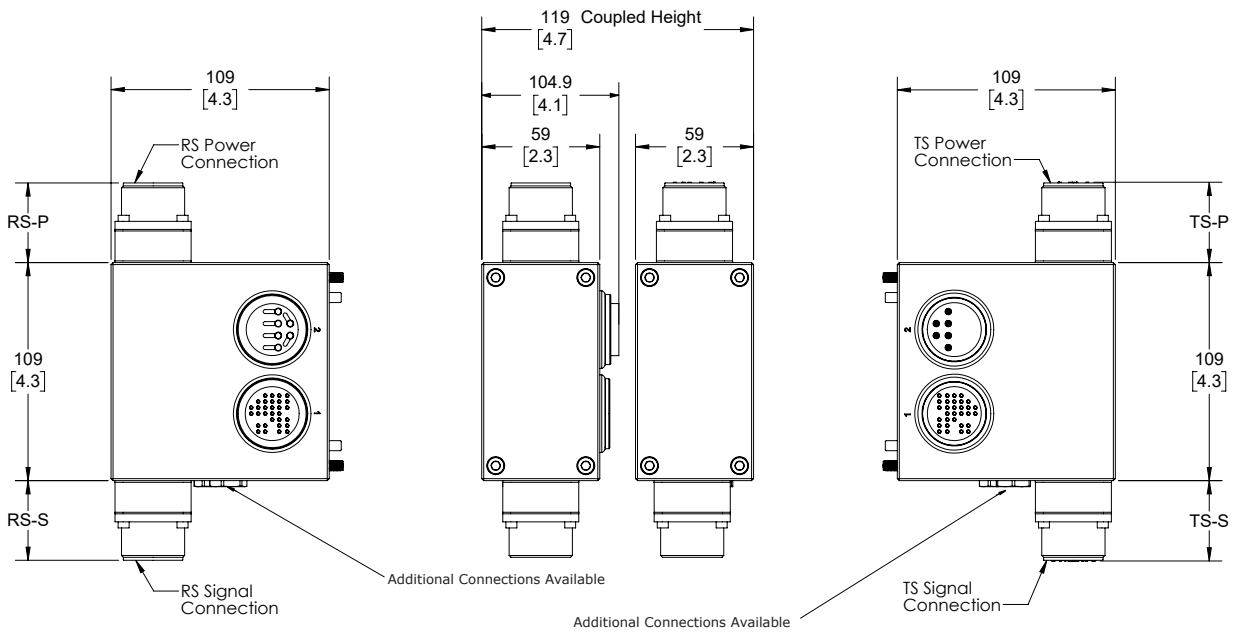
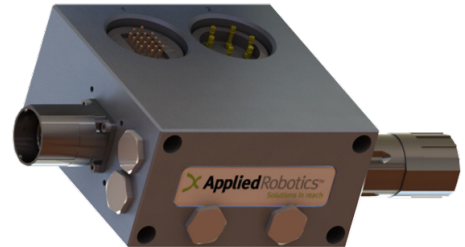
* Images are visual representations only.

PRODUCT INFORMATION

ROBOT ADAPTOR MODULE



TOOL ADAPTOR MODULE



Mounting Hardware Included

MODEL	RS-P	RS-S	TS-P	TS-S
M23	33.8 (1.3)	25.6 (1.0)	50.2 (2.0)	34.9 (1.4)
MS	39.8 (1.6)	39.8 (1.6)	39.8 (1.6)	39.8 (1.6)

* Dimensions are in millimeters (inches).

** All dimensions are descriptive and subject to variation for technical upgrading. We reserve the right to make variations without prior notification.



Applied Robotics
648 Saratoga Road
Glenville, NY 12302 USA
Tel. +1 518 384 1000 Fax +1.5183841200
info@appliedrobotics.com
www.appliedrobotics.com



EFFECTO GROUP S.p.A.
Via Roma, 141/143
28017 San Maurizio d'Opaglio (NO) - Italy
Tel. +39 0322 96142 Fax +39 0322 967453
info@effecto.com
www.effecto.com

