

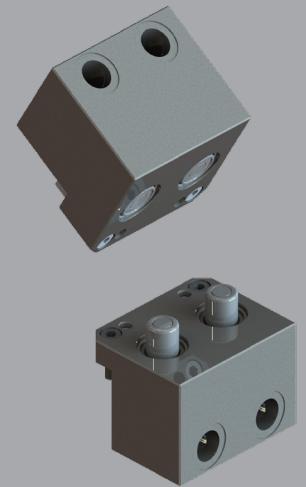
XCHANGE™ Utility Module

Heavy Duty Hydraulic Modules

Heavy Duty Hydraulic Modules pass fluid during an automatic tool changing operation at a high pressure.

Advantages:

- Valved/Checked interface on both Robot and Tool Adaptors
- Stainless Steel Construction
- Flat Face design of valves guarantees zero spillage and prevents external contamination
- Extended Fittings to seal connection prior to flow of fluid
- Flexible Connection Options



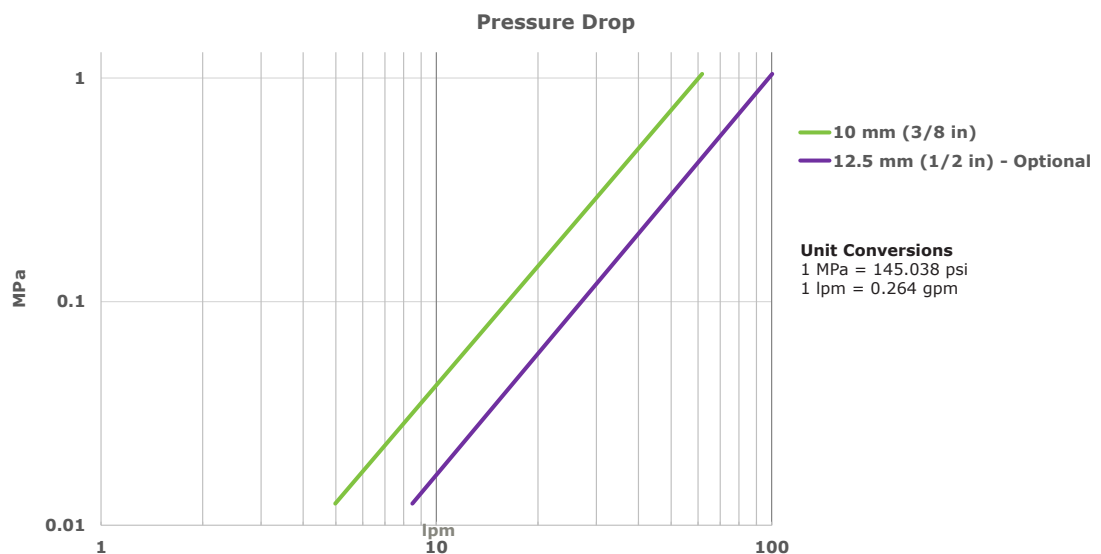
SPECIFICATIONS

| Model | Adaptor Side | Compatible XCHANGE™ Tool Changers | Number of User Connections | Spillage | User Interface | User Pressure Range | Nominal Flow Diameter | Flow | Force to Connect | Weight |
|--------------------------|--------------|-----------------------------------|----------------------------|----------------|----------------|---------------------|-----------------------|------------|------------------|-------------|
| | | | | mL (oz) | in | bar (psi) | mm (in) | lpm (gpm) | N (lb) | kg (lb) |
| E-R-H-02VE3/8BSPP | Robot | E125, E160, E200, and E315 | 2 | 0.012 (0.0004) | 3/8 | 23 (6.08) | 10 (3/8) | 250 (3626) | 110 (24.7) | 2.02 (4.45) |
| E-T-H-02VE3/8BSPP | Tool | E125, E160, E200, and E315 | 2 | 0.012 (0.0004) | 3/8 | 23 (6.08) | 10 (3/8) | 250 (3626) | 110 (24.7) | 1.56 (3.44) |

1/2" User interface available upon request (on E200 and E315 only).

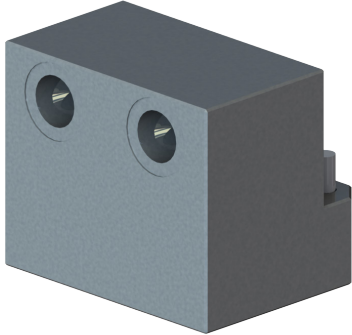
Operating Temperature: **5 - 60 °C (40 - 140 °F)**

Noise Emissions (Sound Pressure): **≤ 70 dB(A) in any direction**

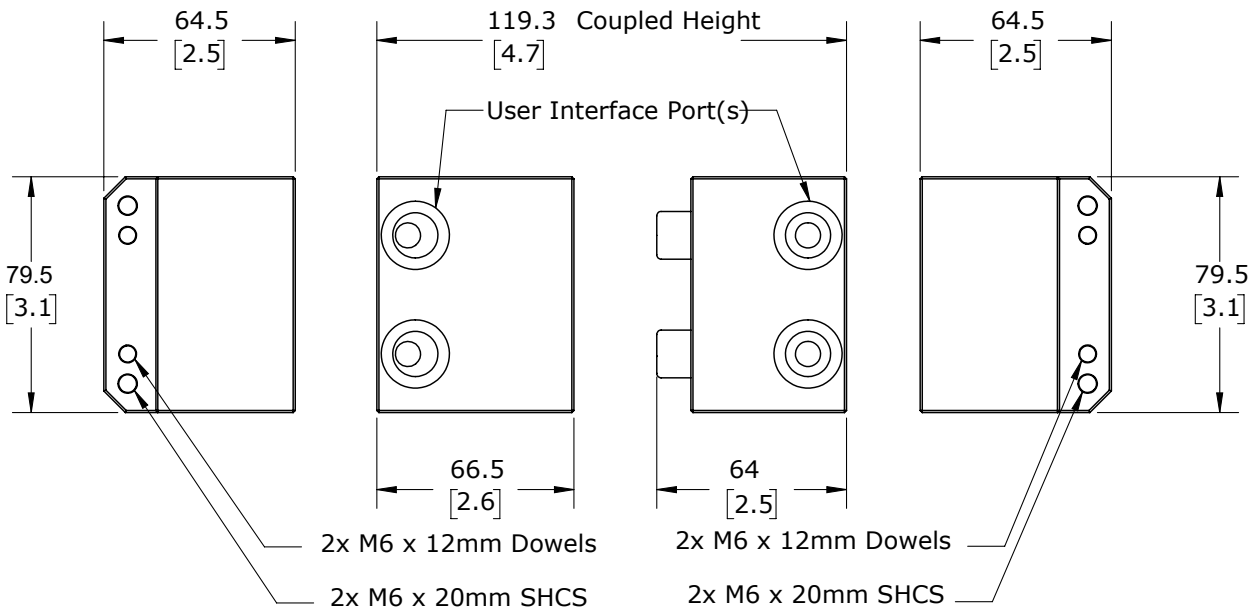
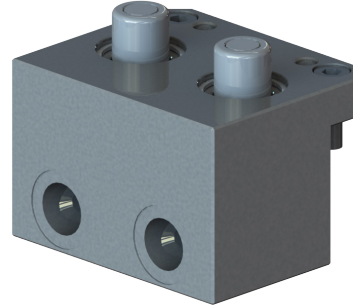


PRODUCT INFORMATION

ROBOT ADAPTOR MODULE



TOOL ADAPTOR MODULE



* Dimensions are in millimeters (inches).

** All dimensions are descriptive and subject to variation for technical upgrading. We reserve the right to make variations without prior notification.



Applied Robotics
648 Saratoga Road
Glenville, NY 12302 USA
Tel. +1 518 384 1000 Fax +1.5183841200
info@appliedrobotics.com
www.appliedrobotics.com



EFFECTO GROUP S.p.A.
Via Roma, 141/143
28017 San Maurizio d'Opaglio (NO) - Italy
Tel. +39 0322 96142 Fax +39 0322 967453
info@effecto.com
www.effecto.com



01.2023_Rev.03_EU