

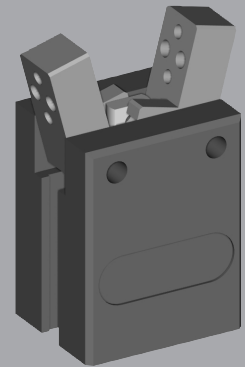
# Pneumatic Angular Grippers

## OLE 2-Finger

OLE is an angular gripper for universal use in clean or dirty environments. Suitable for space sensitive applications

### Advantages

- Slim design allows multiple grippers to be arranged in a row.
- Available in a range of piston plate diameters from 12 to 16mm (see OF for bigger sizes).
- Light, compact design for space-saving handling without interference.
- Integrated permanent magnets for direct monitoring of piston movement.
- Slots for mounting and positioning of magnetic-field sensors.

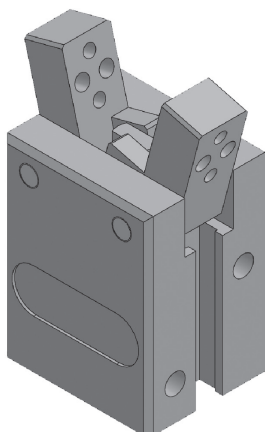


## SPECIFICATIONS

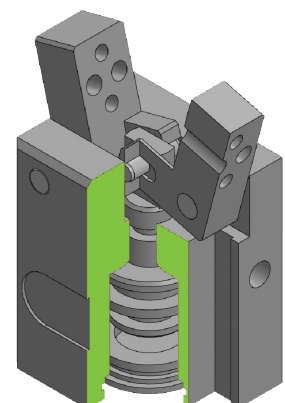
Model	Stroke Per Jaw	Air Consumption Per Cycle (Dual Stroke)	Closing Force Per Jaw @ 6 bar	Opening Force Per Jaw @ 6 bar	Total Closing Force @ 6 bar	Total Opening Force @ 6 bar	Recommended Workpiece Weight*	Weight	Repeatability
OLE 12	20°	0.62 cm <sup>3</sup>	13 N	23 N	26 N	46 N	0.13 kg	0.10 kg	± 0.05 mm
		0.04 in <sup>3</sup>	2.9 lb	5.2 lb	5.8 lb	10.3 lb	0.30 lb	0.22 lb	± 0.002 in
OLE 16	20°	1.3 cm <sup>3</sup>	30 N	40.5 N	60 N	81 N	0.30 kg	0.15 kg	± 0.05 mm
		0.08 in <sup>3</sup>	6.7 lb	9.1 lb	13.5 lb	18.2 lb	0.70 lb	0.33 lb	± 0.002 in

\* Recommended workpiece weight is calculated for force-fit gripping with a coefficient of static friction of 0.15 and a safety factor of 3 against workpiece slippage.  
 Operating Pressure **2 - 8 bar (29 - 116 psi)**  
 Working Temperature **5 - 60 °C (41 - 140 °F)**  
 Noise Emission (Sound Pressure) **≤ 70 dB(A) in any direction**

## SECTIONAL DIAGRAM



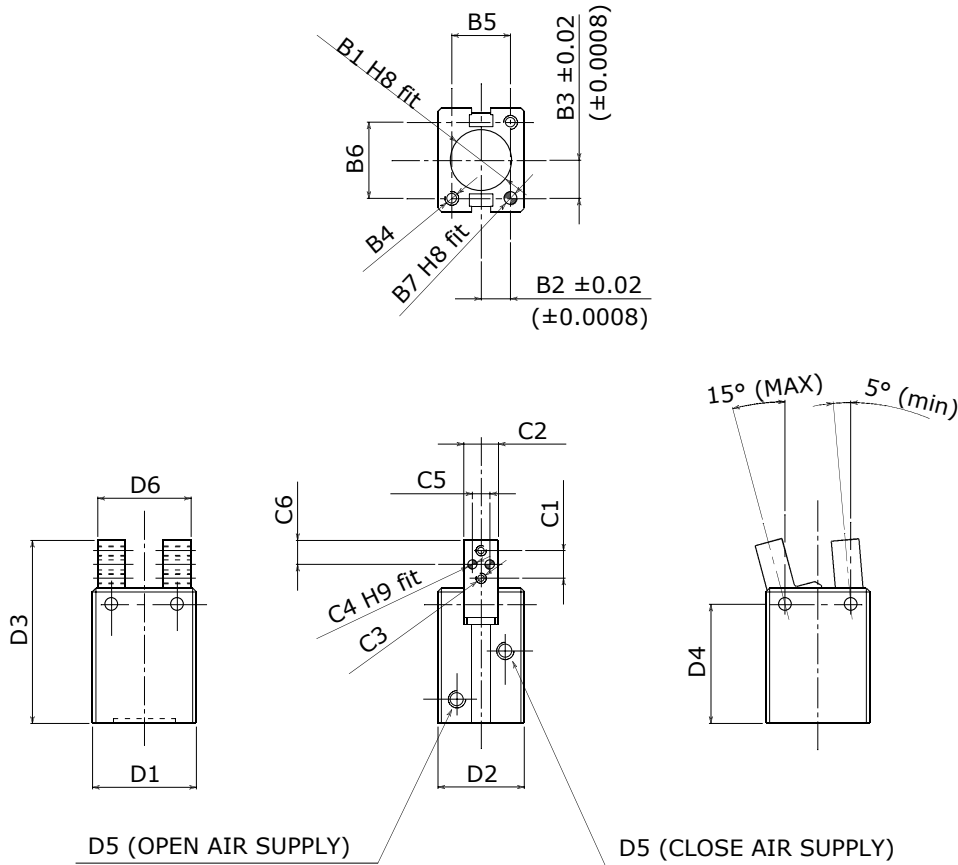
**Guidelines for the selection of a gripper model**  
 Selection of the correct gripper model depends on the workpiece's weight, the friction coefficient between the fingers and the workpiece and the required motion of the application. Due to inertial forces associated with motion, we recommend that the holding force of the gripper model should be from 10 to 20 times the workpiece's weight. If the application presents high acceleration/deceleration or impacts during the motion, then a further safety margin should be considered.



# PRODUCT INFORMATION

# OLE 2-Finger

Dowel hole depth: Body  $\geq 1.2 d$  - Jaws  $\geq 1.2 d$



### Options

- Magnetic switches

	Mounting - Option # 2							Finger Application						Informational Dimensions					
	B1	B2	B3	B4	B5	B6	B7	C1	C2	C3	C4	C5	C6	D1	D2	D3	D4	D5	D6
<b>OLE 12</b>	14.00 (0.55)	7 (0.28)	10 (0.39)	M3	14 (0.55)	20 (0.79)	3 (0.12)	8 (0.31)	10 (0.39)	M3	3 (0.12)	5 (0.20)	7 (0.28)	27 (1.06)	20 (0.79)	53 (2.09)	34.5 (1.36)	M3	27 (1.06)
<b>OLE 16</b>	18.00 (0.71)	8.5 (0.33)	11 (0.43)	M3	17 (0.67)	22 (0.87)	4 (0.16)	8 (0.31)	10 (0.39)	M3	3 (0.12)	5 (0.20)	7 (0.28)	30 (1.18)	25 (0.98)	53 (2.09)	34.5 (1.36)	M5	27 (1.06)

\* Dimensions are in millimeters (inches).

\*\* All dimensions are descriptive and subject to variation for technical upgrading. We reserve the right to make variations without prior notification



Applied Robotics  
648 Saratoga Road  
Glenville, NY 12302 USA  
Tel. +1 518 384 1000 Fax +1.5183841200  
info@appliedrobotics.com  
www.appliedrobotics.com



EFFECTO GROUP S.p.A.  
Via Roma, 141/143  
28017 San Maurizio d'Opaglio (NO) - Italy  
Tel. +39 0322 96142 Fax +39 0322 967453  
info@effecto.com  
www.effectogroup.com

