

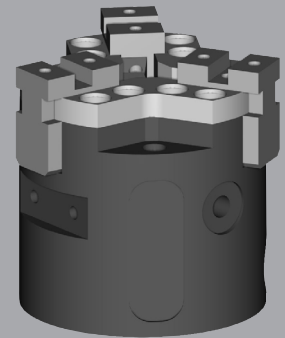
Pneumatic Parallel Grippers

OPL 3-Finger

OPL is a compact three-finger parallel gripper featuring high reliability and a long service life, suitable for handling low weight or small components.

Advantages

- Compact housing made of hard coated aluminum alloy.
- Sturdy C-slot with hardened steel gibs for effective jaw guidance, precise handling and easy maintenance.
- Wedge-hook design for high-force transmission and jaw synchronization.
- Mounting from two sides in two screw directions for versatile and flexible integration.
- Air supply via fitting screw connections.



SPECIFICATIONS

Model	Stroke Per Jaw	Air Consumption Per Cycle (Dual Stroke)	Closing Force Per Jaw @ 6 bar	Opening Force Per Jaw @ 6 bar	Total Closing Force @ 6 bar	Total Opening Force @ 6 bar	Recommended Workpiece Weight*	Weight	Repeatability
OPL 45-3	4 mm 0.16 in	3.4 cm ³ 0.21 in ³	45 N 10.1 lb	53 N 11.9 lb	135 N 30.3 lb	159 N 35.7 lb	0.68 kg 1.50 lb	0.25 kg 0.55 lb	± 0.05 mm ± 0.002 in

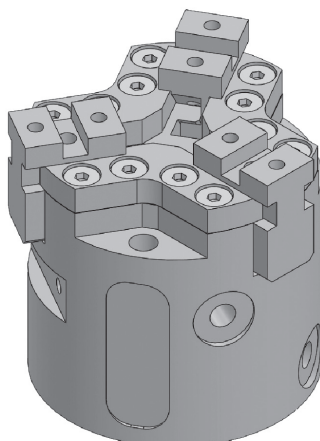
* Recommended workpiece weight is calculated for force-fit gripping with a coefficient of static friction of 0.15 and a safety factor of 3 against workpiece slippage.

Operating Pressure **2 - 7 bar (29 - 101.5 psi)**

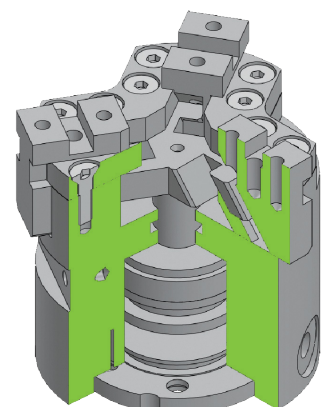
Working Temperature **5 - 60 °C (41 - 140 °F)**

Noise Emission (Sound Pressure) **≤ 70 dB(A) in any direction**

SECTIONAL DIAGRAM



Guidelines for the selection of a gripper model
 Selection of the correct gripper model depends on the workpiece's weight, the friction coefficient between the fingers and the workpiece and the required motion of the application. Due to inertial forces associated with motion, we recommend that the holding force of the gripper model should be from 10 to 20 times the workpiece's weight. If the application presents high acceleration/deceleration or impacts during the motion, then a further safety margin should be considered.

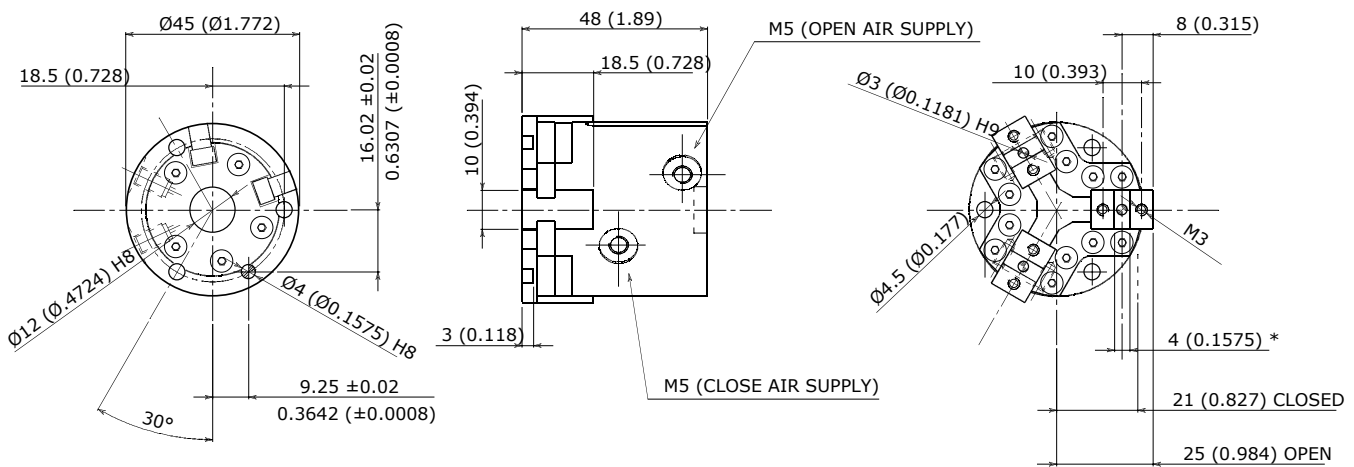


PRODUCT INFORMATION

OPL 3-Finger

Dowel hole depth: Body $\geq 1.2 d$ - Jaws $\geq 1 d$

C4* Up to 6 mm = $0/+0.025$ mm - From 6 mm to 10 mm = $0/+0.030$ mm - Over 10 mm = $0/+0.040$ mm



Options

- Mounting brackets for inductive proximity switches

* Dimensions are in millimeters (inches).

** All dimensions are descriptive and subject to variation for technical upgrading. We reserve the right to make variations without prior notification



Applied Robotics
648 Saratoga Road

Glenville, NY 12302 USA
Tel. +1 518 384 1000 Fax +1.5183841200
info@appliedrobotics.com
www.appliedrobotics.com



EFFECTO GROUP S.p.A.
Via Roma, 141/143

28017 San Maurizio d'Opaglio (NO) - Italy
Tel. +39 0322 96142 Fax +39 0322 967453
info@effecto.com
www.effecto.com

