

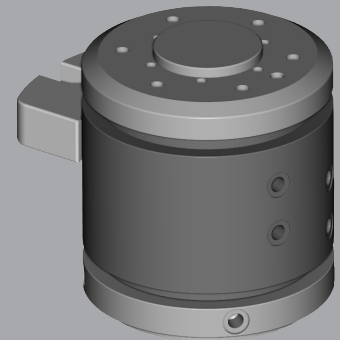
Rotary Distributors

PRD 2 Feed-Through

PRD is a rotary fluid feed-through for robot applications and rotary indexing tables with unlimited rotational movement.

Advantages

- High strength, long life, no maintenance.
- Hardened steel inner hub for high power-transmission of modern robots.
- ISO flange pattern for easy mounting to most types of robots without needing additional adapter plates.
- 2 or 4 fluid feed-throughs (more feed-throughs available on request).
- Compact dimensions for minimal impact in customers' applications.
- Smooth-running long-lasting seal ensures low starting torque and low continuous torque.
- Dirt protection by means of rotary seals.
- Air supply via axial or radial fitting screw connections.



SPECIFICATIONS

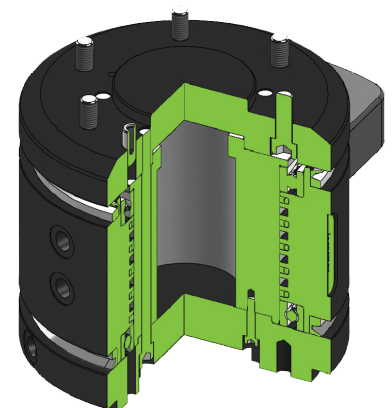
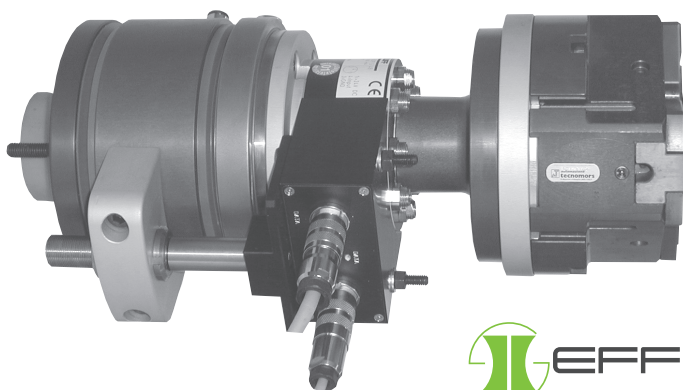
Model	Nr. of feed-throughs	Recommended handling weight	Starting torque	Robot side connection	Max Radial Torque	Max Rotational Speed	Weight
PRD2-31.5	2	6.00 kg	2.5 Nm	ISO 9409-1-31.5	20 Nm	900 rpm	0.58 kg
		13.23 lb	23 lb-in		177 in lb		1.28 lb
PRD2-40	2	20.00 kg	2.5 Nm	ISO 9409-1-40	80 Nm	600 rpm	1.13 kg
		44.10 lb	23 lb-in		708 in lb		2.49 lb
PRD2-50	2	20.00 kg	2.5 Nm	ISO 9409-1-50	80 Nm	600 rpm	1.23 kg
		44.10 lb	23 lb-in		708 in lb		2.71 lb
PRD2-63	2	35.00 kg	4.5 Nm	ISO 9409-1-63	100 Nm	500 rpm	2.41 kg
		77.18 lb	40 lb-in		885 in lb		5.30 lb
PRD2-80	2	100.00 kg	10 Nm	ISO 9409-1-80	350 Nm	300 rpm	5.30 kg
		220.50 lb	88.5 lb-in		3098 in lb		11.66 lb
PRD2-100	2	100.00 kg	10 Nm	ISO 9409-1-100	350 Nm	300 rpm	5.40 kg
		220.50 lb	88.5 lb-in		3098 in lb		11.88 lb
PRD2-125	2	225.00 kg	22.5 Nm	ISO 9409-1-125	600 Nm	240 rpm	13.40 kg
		496.13 lb	200 lb-in		5310 in lb		29.48 lb
PRD2-160	2	225.00 kg	22.5 Nm	ISO 9409-1-160	600 Nm	240 rpm	14.35 kg
		496.13 lb	200 lb-in		5310 in lb		31.57 lb

The product is NOT intended for continuous rotation applied but only for discontinuous rotational movement
Working Pressure Range **2 - 12 bar (29 - 174 psi)**

Options:

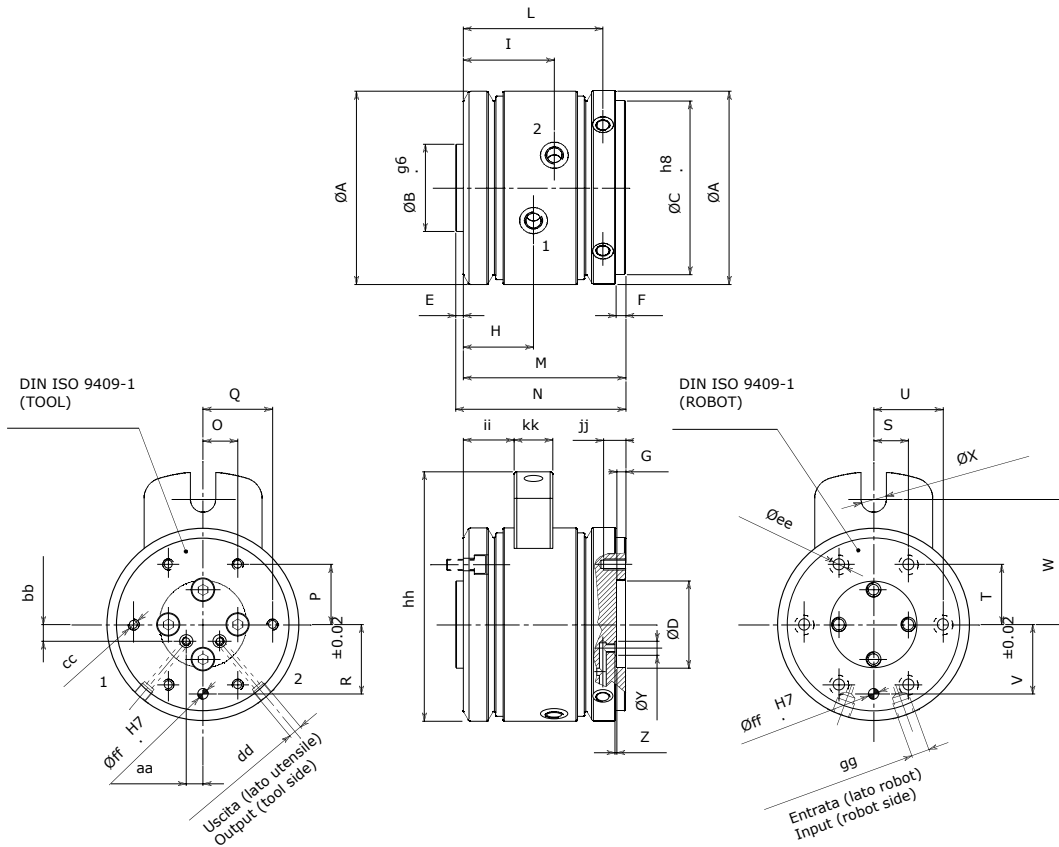
- Number of feed-troughs (more than 4)
- Customized flange pattern
- Electrical module for 8 discrete inputs (max. 160 mA each)
- Special rubber seals

SECTIONAL DIAGRAM



PRODUCT INFORMATION

PRD 2 Feed-Through



	A	B	C	D	E	F	G	H	I	J	K	L	M	N	O	P	Q	R	S
PRD2-31.5	63 (0.25)	20 (0.08)	40 (0.16)	20 (0.08)	3.5 (0.01)	6.5 (0.03)	4 (0.02)	28.25 (0.11)	36.75 (0.14)	-	-	56.5 (0.22)	67 (0.26)	73.5 (0.29)	11.14 (0.04)	11.14 (0.04)	-	15.75 (0.06)	11.14 (0.04)
PRD2-40	79 (0.31)	25 (0.1)	50 (0.2)	25 (0.1)	5.5 (0.02)	6.5 (0.03)	6.5 (0.03)	35.5 (0.14)	46 (0.18)	-	-	67.5 (0.27)	81 (0.32)	86.5 (0.34)	14.14 (0.03)	14.14 (0.06)	-	20 (0.08)	14.14 (0.06)
PRD2-50	79 (0.31)	31.5 (0.12)	63 (0.25)	31.5 (0.12)	5.5 (0.02)	6.5 (0.03)	6.5 (0.03)	35.5 (0.14)	46 (0.18)	-	-	67.5 (0.27)	81 (0.32)	86.5 (0.34)	17.68 (0.07)	17.68 (0.07)	-	25 (0.1)	17.68 (0.07)
PRD2-63	98 (0.39)	40 (0.16)	80 (0.31)	40 (0.16)	5.5 (0.02)	6.5 (0.03)	6.5 (0.03)	41.25 (0.16)	54.75 (0.22)	-	-	84 (0.33)	98 (0.39)	103.5 (0.41)	22.27 (0.09)	22.27 (0.09)	-	31.5 (0.12)	22.27 (0.09)
PRD2-80	139 (0.55)	50 (0.2)	100 (0.39)	50 (0.2)	5.5 (0.02)	7 (0.03)	6.5 (0.03)	46.5 (0.18)	57.5 (0.23)	-	-	96.5 (0.38)	113 (0.44)	109.5 (0.43)	20 (0.08)	34.64 (0.14)	40 (0.16)	40 (0.16)	20 (0.08)
PRD2-100	139 (0.55)	63 (0.25)	125 (0.49)	63 (0.25)	5.5 (0.02)	7 (0.03)	6.5 (0.03)	46.5 (0.18)	57.5 (0.23)	-	-	96.5 (0.38)	113 (0.44)	109.5 (0.43)	25 (0.1)	43.3 (0.17)	50 (0.2)	50 (0.2)	25 (0.1)
PRD2-125	184 (0.72)	80 (0.31)	160 (0.63)	80 (0.31)	7.5 (0.03)	8.5 (0.03)	8.5 (0.03)	59 (0.23)	74 (0.29)	-	-	120 (0.47)	141 (0.56)	148.5 (0.58)	31.25 (0.12)	54.13 (0.21)	62.5 (0.25)	62.5 (0.25)	31.25 (0.12)
PRD2-200	200 (0.79)	100 (0.39)	200 (0.79)	100 (0.39)	7.5 (0.03)	8.5 (0.03)	8.5 (0.03)	59 (0.23)	74 (0.29)	-	-	120 (0.47)	141 (0.56)	148.5 (0.58)	40 (0.16)	69.28 (0.27)	80 (0.31)	80 (0.31)	40 (0.16)

	T	U	V	W	X	Y	Z	aa	bb	cc	dd	ee	ff	gg	hh	ii	jj	kk
PRD2-31.5	14.14 (0.56)		15.75 (0.62)	40 (1.57)	10.1 (0.4)	6 (0.24)	0.7 (0.03)	14.1 (0.56)	5.13 (0.2)	-	-	5.5 (0.22)	5 (0.2)	-	82.5 (3.25)	21.25 (0.84)	10 (0.39)	16 (0.63)
PRD2-40	14.14 (0.56)		20 (0.79)	50 (1.97)	12.2 (0.48)	7 (0.28)	1.1 (0.04)	4 (0.16)	5.5 (0.22)	-	-	6.5 (0.26)	6 (0.24)	-	101.5 (4)	26.5 (1.04)	12 (0.47)	18 (0.71)
PRD2-50	17.68 (0.7)		25 (0.98)	50 (1.97)	12.2 (0.48)	7 (0.28)	1.1 (0.04)	4 (0.16)	5.5 (0.22)	-	-	6.5 (0.26)	6 (0.24)	-	101.5 (4)	26.5 (1.04)	12 (0.47)	18 (0.71)
PRD2-63	22.27 (0.88)		31.5 (1.24)	65 (2.56)	12.2 (0.48)	7 (0.28)	1.1 (0.04)	5.5 (0.22)	5.5 (0.22)	-	-	6.5 (0.26)	6 (0.24)	-	129 (5.08)	30.25 (1.19)	12 (0.47)	22 (0.87)
PRD2-80	34.64 (1.36)	40 (1.57)	40 (1.57)	90 (3.54)	18.2 (0.72)	10 (0.39)	1.3 (0.05)	12.02 (0.47)	12.02 (0.47)	-	-	8.5 (0.33)	8 (0.31)	-	179.5 (7.07)	36.5 (1.44)	16 (0.63)	28 (1.1)
PRD2-100	43.3 (1.7)	50 (1.97)	50 (1.97)	90 (3.54)	18.2 (0.72)	10 (0.39)	1.3 (0.05)	12.02 (0.47)	12.02 (0.47)	-	-	8.5 (0.33)	8 (0.31)	-	179.5 (7.07)	36.5 (1.44)	16 (0.63)	28 (1.1)
PRD2-125	54.13 (2.13)	62.5 (2.46)	62.5 (2.46)	120 (4.72)	24.2 (0.95)	14 (0.55)	1.3 (0.05)	17.68 (0.7)	17.68 (0.7)	-	-	10.5 (0.41)	10 (0.39)	-	236 (9.29)	50 (1.97)	20 (0.79)	34 (1.34)
PRD2-200	69.28 (2.73)	80 (3.15)	80 (3.15)	120 (4.72)	24.2 (0.95)	14 (0.55)	1.3 (0.05)	17.68 (0.7)	17.68 (0.7)	-	-	10.5 (0.41)	10 (0.39)	-	244 (9.61)	50 (1.97)	20 (0.79)	34 (1.34)

* Dimensions are in millimeters (inches).

** All dimensions are descriptive and subject to variation for technical upgrading. We reserve the right to make variations without prior notification



Applied Robotics
648 Saratoga Road
Glenville, NY 12302 USA
Tel. +1 518 384 1000 Fax +1.5183841200
info@appliedrobotics.com
www.appliedrobotics.com



EFFECTO GROUP S.p.A.
Via Roma, 141/143
28017 San Maurizio d'Opaglio (NO) - Italy
Tel. +39 0322 96142 Fax +39 0322 967453
info@effecto.com
www.effecto.com

