

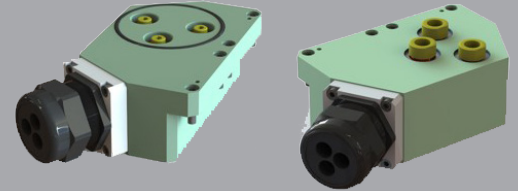
# XCHANGE™ Utility Module

## High Power Modules – Sigma

High Power (HIKVA) Modules pass high power during an automatic tool changing operation required for welding.

### Advantages:

- Flexible Connection Options
- Compliant spring contacts
- Split Lug design for ease of cable installation
- Finger Protection for safety
- Replaceable contact tips for ease of maintenance
- Sealed contact interface



Compatible XCHANGE™ Tool Changers: E125, E160, E200, and E315

## SPECIFICATIONS

Model	Tool Changer Adaptor Side	Weight	User Connection(s)	Conductor Cross Section	Continuous Current Rating (up to 1 kHz)
		kg (lb)		mm <sup>2</sup> (AWG)	A
HIKVA Module – 1x 22mm - 32mm	Robot	1.50 (3.30)	1x Strain Relief for 22mm - 32mm Cable	3x 35mm <sup>2</sup>	225
	Tool	1.63 (3.59)		(3x 2 AWG)	
HIKVA Module – 3x 35mm <sup>2</sup>	Robot	1.50 (3.30)	3x Strain Reliefs for 3x 13mm Cables	3x 35mm <sup>2</sup>	225
	Tool	1.63 (3.59)		(3x 2 AWG)	
HIKVA Module – 2x 35mm <sup>2</sup> and 1x 25mm <sup>2</sup>	Robot	1.50 (3.30)	3x Strain Reliefs for 2x 13mm Cables and 1x 11mm Cable	2x 35mm <sup>2</sup> and 1x 25mm <sup>2</sup>	225
	Tool	1.63 (3.59)		(2x 2 AWG and 1x 4 AWG)	
HIKVA Module – Robifix *	Robot	2.70 (2.59)	Robifix TAE1	N/A	194

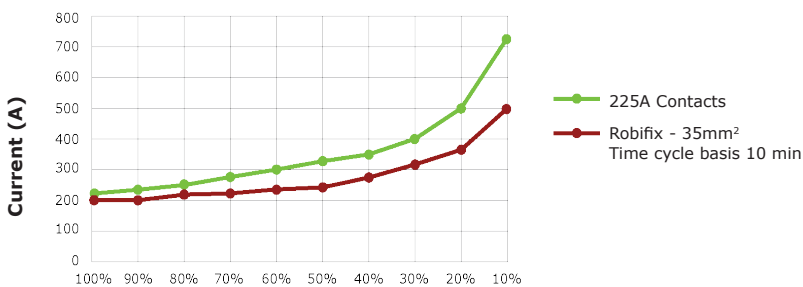
\* HIKVA Module – Robifix can be used with any of the other HIKVA tool side modules.

Operating Temperature: **5 - 60 °C (40 - 140 °F)**

Noise Emissions (Sound Pressure): **≤ 70 dB(A) in any direction**

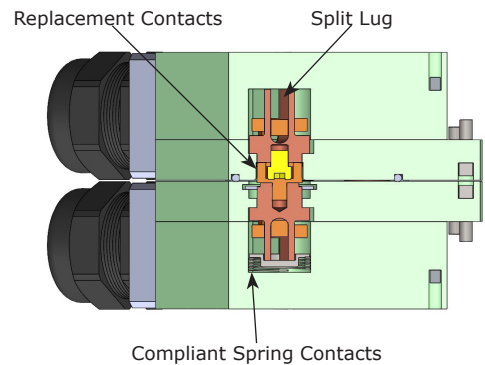
## CURRENT RATING

Current vs Duty Cycle, at 20 °C (68 °F) and 0-1000 Hz



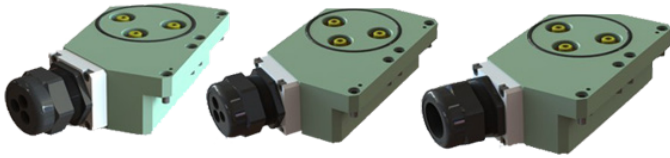
Rating factor (related to frequency and cross-section)

	Frequency	
	2000 Hz	3000 Hz
35 mm <sup>2</sup>	0.93	0.90
25 mm <sup>2</sup>	0.95	0.92

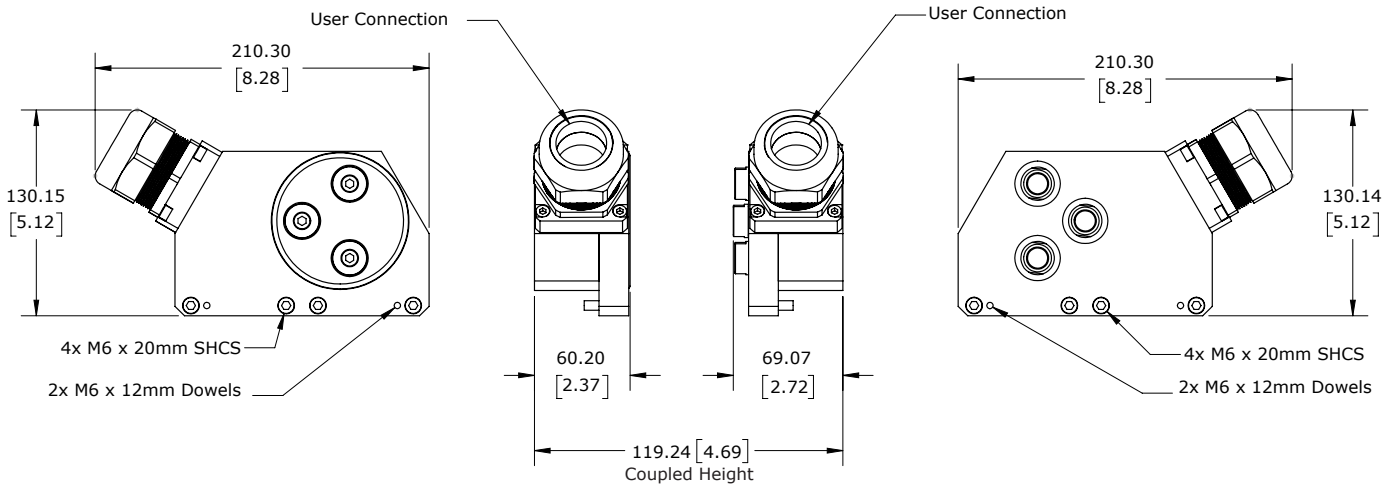


# PRODUCT INFORMATION

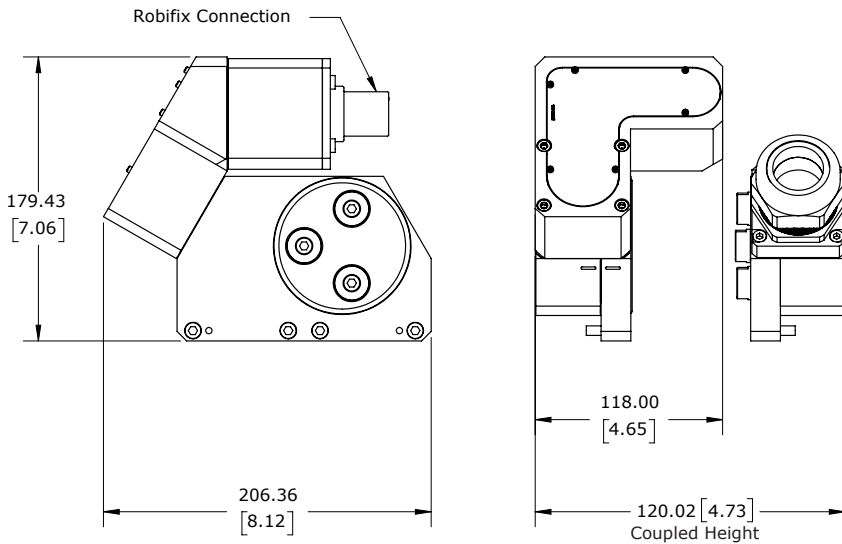
## ROBOT ADAPTOR MODULE



## TOOL ADAPTOR MODULE



## ROBOT ADAPTOR MODULE - Robifix



\* Dimensions are in millimeters (inches).

\*\* All dimensions are descriptive and subject to variation for technical upgrading. We reserve the right to make variations without prior notification.



Applied Robotics  
648 Saratoga Road  
Glenville, NY 12302 USA  
Tel. +1 518 384 1000 Fax +1.5183841200  
info@appliedrobotics.com  
www.appliedrobotics.com



EFFECTO GROUP S.p.A.  
Via Roma, 141/143  
28017 San Maurizio d'Opaglio (NO) - Italy  
Tel. +39 0322 96142 Fax +39 0322 967453  
info@effecto.com  
www.effecto.com

