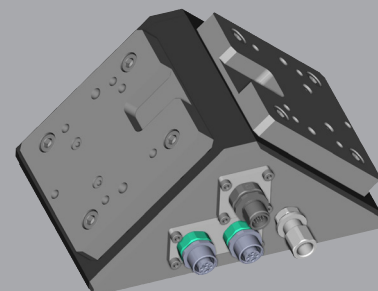


Dual Gripper Supports SR

The different models of SR have been designed to mount on the robot or on the mechanical hand two grippers simultaneously. This support makes easier the machine tool interlock and the robot load-unloading.

Advantages

- nr.2 gripper driving electrovalves fixed in the support with electrical and pneumatical wired predisposition
- nr. 1 multipolar connector (19 poles), wired with the internal components, allows the components feeding and: grippers electro-valve feeding, gripper position control open-close
- nr.1 multipolar connector (6 poles) connected with the proximity switches
- This connector is just wired with the principal connector (19 poles).
With this device the two grippers can be fed and controlled also if the system has only one air connection and one multipolar connector. So you need only a hydraulic feed tube and a electrical signals cable jointed to the robot or to the mechanical hand. The great advantage is to make easy all the connections.



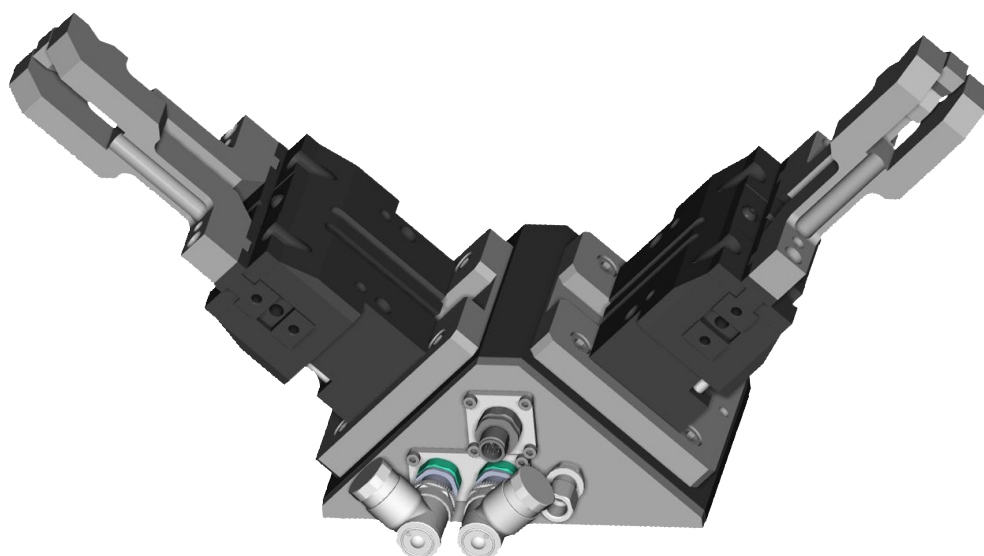
SPECIFICATIONS

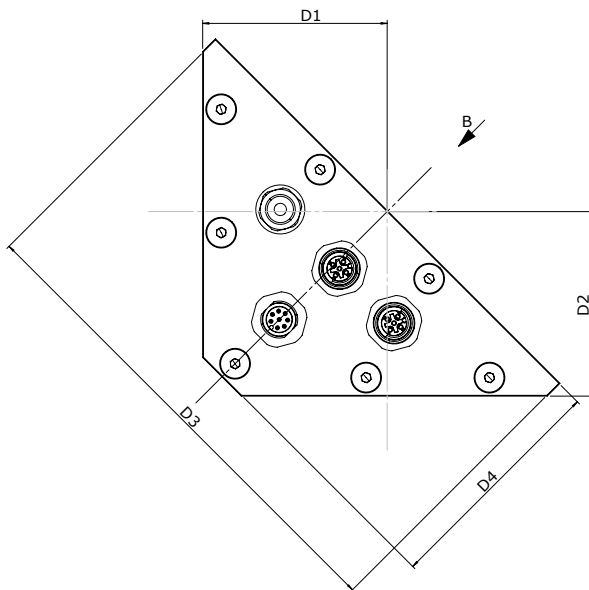
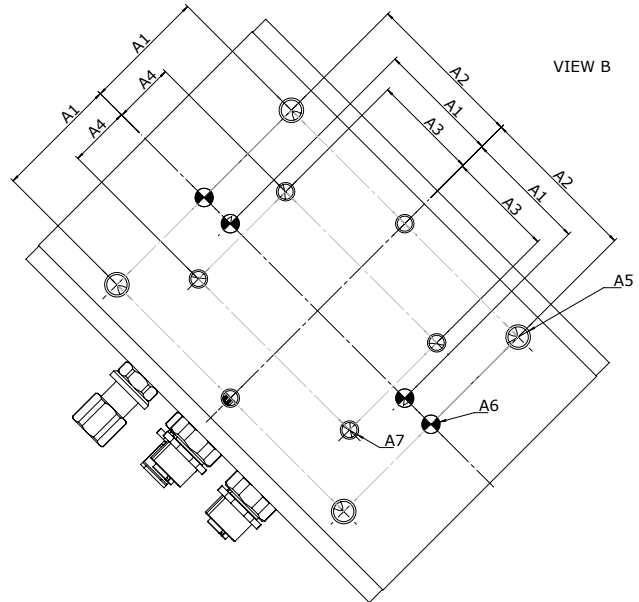
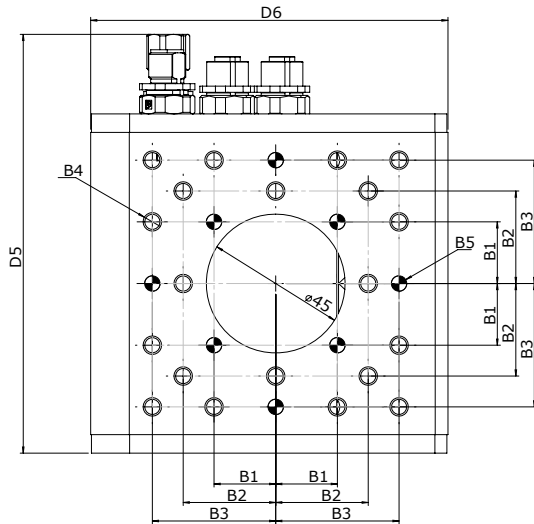
Model	Mounting Plate Size	Weight
SR 15	110 x 110 mm 4.33 x 4.33 in	1.3 kg 28.66 lbs
SR 45	175 x 175 mm 6.89 x 6.89 in	7.5 kg 165.35 lbs

Operating Pressure **2 - 7 bar (29 - 101 psi)**

Working Temperature **5 - 60 °C (41 - 140 °F)**

Noise Emission (Sound Pressure) **≤ 70 dB(A) in any direction**





Suitable Grippers

SR 15	SR 45
OPE 70 / OPE 70 S	OPE 100 / OPE 100 S
OPE 80 / OPE 80 S	OPE 115 / OPE 115 S
OPE 95 / OPE 95 S	OPE 160 / OPE 160 S
OPE 100 / OPE 100 S	OPE110-3 / OPE 110-3 S
OPE 65-3 / OPE 65-3 S	OPE 125-3 / OPE 125-3 S
OPE 80-3 / OPE 80-3 S	OPE 175-3 / OPE 175-3 S
OPE 90-3 / OPE 90-3 S	QPG 212 / QPG 212 S
OPE 105-3 / OPE 105-3 S	QPG 311 / QPG 311 S
QPG 206 / QPG 206 S	QPG 313 / QPG 313 S
QPG 208 / QPG 208 S	OPH 133
QPG 210 / QPG 210 S	OPH 118-3
QPG 307 / QPG 307 S	OPH 148-3
QPG 309 / QPG 309 S	OG 565
OPH 73	OG 570 - 8,5° / 12,5°
OPH 88	OG550-3
OPH 108	OG570-3
OPH 83-3	
OPH 98-3	
OPH 83-3	
OG 510	
OG 530	
OG 550 - 7,5° / 12,5°	
OG 565	
OG 530-3	
OG 550-3	

	Mounting - Robot Flange							Mounting - Grippers Interface					Informational Dimensions					
	A1	A2	A3	A4	A5	A6	A7	B1	B2	B3	B4	B5	D1	D2	D3	D4	D5	D6
SR 15	40 (1.57)	40 (1.57)	34.64 (1.36)	20 (0.79)	M8	ø6 H7	M6	20 (0.79)	30 (1.18)	40 (1.57)	M6	ø5 H7	60 (2.36)	60 (2.36)	157.5 (6.20)	75.5 (2.97)	135.8 (5.35)	115.9 (4.56)
SR 45	75 (2.95)	90 (3.54)	64.95 (2.56)	37.5 (1.48)	M10	ø8 H7	M10	35 (1.38)	52.5 (2.07)	70 (2.76)	M8	ø6 H7	100 (3.94)	100 (3.94)	260 (10.24)	128 (5.04)	215 (8.46)	192 (7.56)

* Dimensions are in millimeters (inches).

** All dimensions are descriptive and subject to variation for technical upgrading. We reserve the right to make variations without prior notification

