

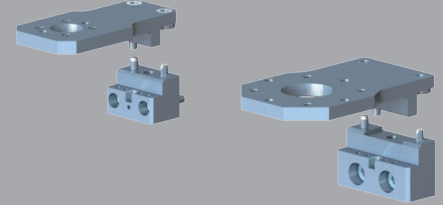
XCHANGE™ Tool Stand Accessory

Light Duty Tool Mount Assemblies

Light Duty Tool Mount Assemblies (TMA) allow for the docking/undocking of tools during an automatic tool changing operation.

Advantages:

- Accurate docking/undocking location
- Compatible with Fixture Base Assembly (FBA)
- Compatible with Tool Stand Switch
 - Detects when a tool is docked in the mount
- Optional Tool Identification



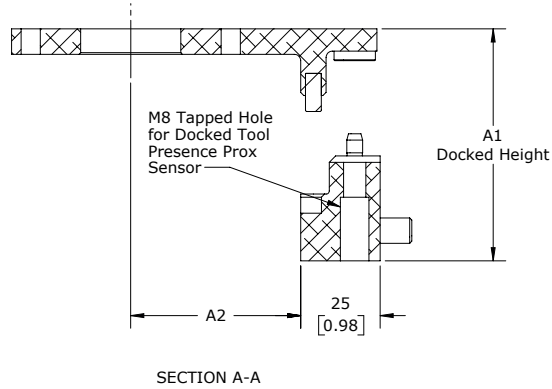
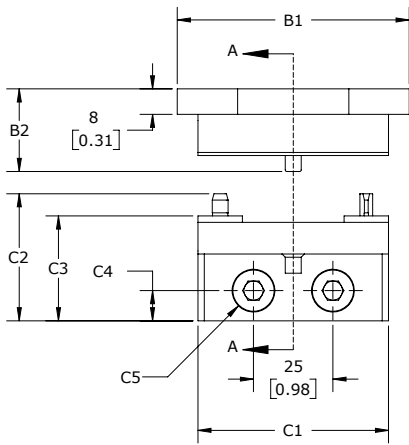
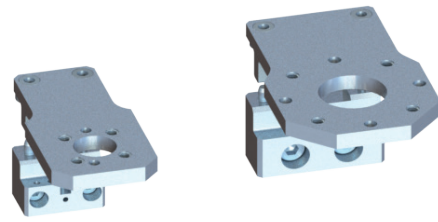
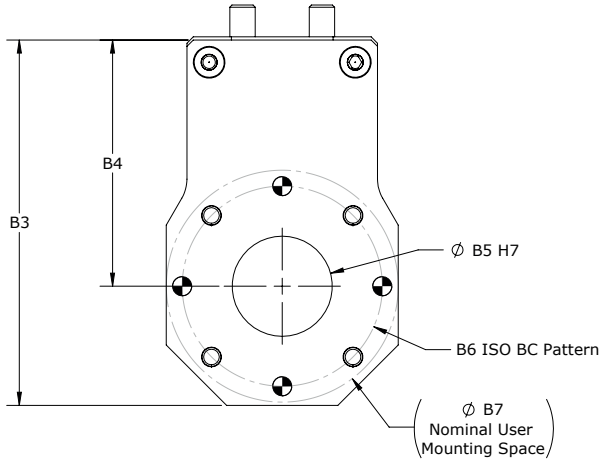
SPECIFICATIONS

Model	Compatible XCHANGE™ Tool Changers	Compatible XCHANGE™ Fixture Base Assembly	T-Plate Weight kg (lb)	Mount Weight kg (lb)	Max Payload kg (lb)
E31.5 TMA	E31.5	E31.5-FBA	0.12 (0.26)	0.06 (0.13)	10 (22)
E50/63 TMA	E50/63	E63-FBA	0.18 (0.40)	0.13 (0.29)	50 (110)

STANDARD CONFIGURATION



PRODUCT INFORMATION



NOTE: Dimensions are mm [in]

	Docked		T-Plate					Mount						
	A1	A2	B1	B2	B3	B4	B5	B6	B7	C1	C2	C3	C4	C5
E31.5 TMA	35 (1.38)	51.5 (2.03)	50 (1.97)	23 (0.91)	100 (3.94)	75 (2.95)	20 (0.79)	31.5mm	50 (1.97)	38 (1.50)	32 (1.26)	25 (0.98)	8.75 (0.34)	2X M5x20 SHCS
E50/63 TMA	43 (1.69)	53.5 (2.11)	73 (2.87)	26 (1.02)	115 (4.53)	77.5 (3.05)	31.5 (1.24)	63mm (2 Positions Available)	73 (2.87)	60 (2.36)	40 (1.57)	33 (1.30)	9.5 (0.37)	2X M8x20 SHCS

* Dimensions are in millimeters (inches).

** All dimensions are descriptive and subject to variation for technical upgrading. We reserve the right to make variations without prior notification



Applied Robotics
648 Saratoga Road
Glenville, NY 12302 USA
Tel. +1 518 384 1000 Fax +1.5183841200
info@appliedrobotics.com
www.appliedrobotics.com



EFFECTO GROUP S.p.A.
Via Roma, 141/143
28017 San Maurizio d'Opaglio (NO) - Italy
Tel. +39 0322 96142 Fax +39 0322 967453
info@effecto.com
www.effecto.com

