

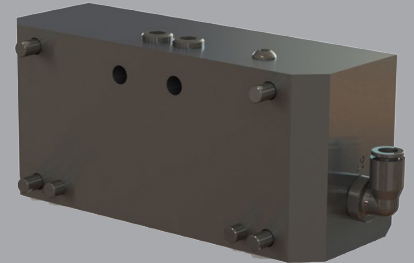
XCHANGE™ Utility Module Valve Module

Single Actuating Valve provides a single input to actuate the robot adaptor during an automatic tool changing operation.

Advantages:

- Compact design
- 5/2 monostable valve defaults the tool changer to a COUPLED state (safe state)
- In accordance with the EC Machinery Directive 2006/42/EC
- Manual actuation by means of a push button

Compatible XCHANGE™ Tool Changers:
E125, E160, E200, and E315



SPECIFICATIONS

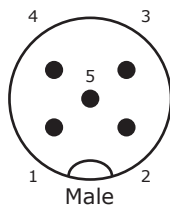
Model	Weight	Operating Voltage	Operating Pressure	Standard Nominal Flow Rate	Transportation & Storage Temperature Humidity
	kg (lb)	VDC	bar (psi)	NLPM (SCFM)	
Valve	0.72 (1.59)	24 ± 10%	5 - 7 (72 - 101)	190 (6.7)	Up to 75%, Temperature 10-40°C (50-104 °F)

Operating Temperature: **-5 - 50 °C (23 - 122 °F)**

Noise Emissions (Sound Pressure): **≤ 70 dB(A) in any direction**

ELECTRICAL SCHEMATIC

M12 5 PIN Male Connector for Valve Command

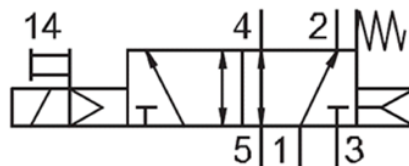


- | | |
|---|----------|
| 1 | Not used |
| 2 | + or - |
| 3 | + or - |
| 4 | Not used |
| 5 | Not used |

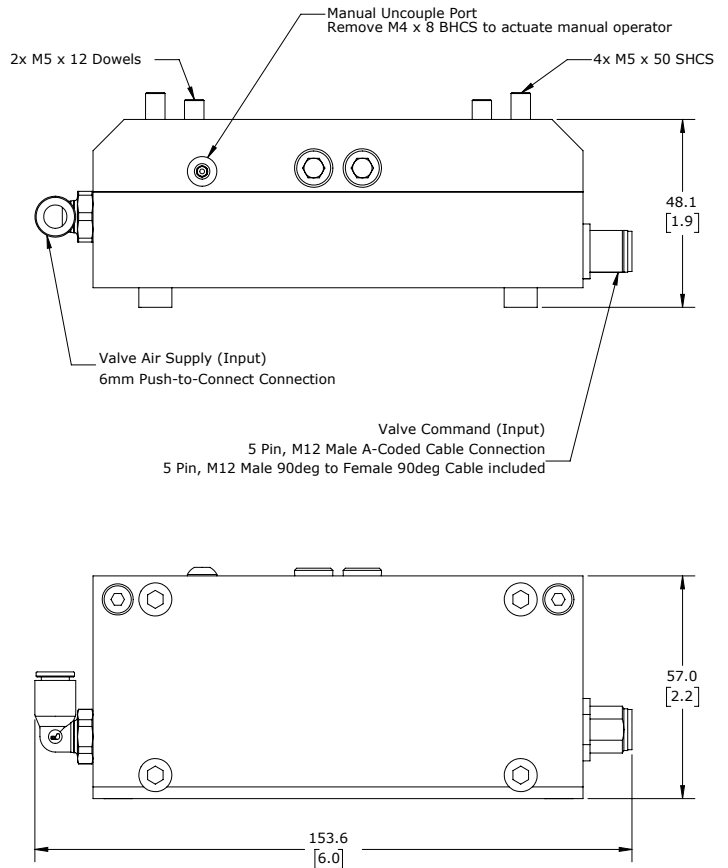
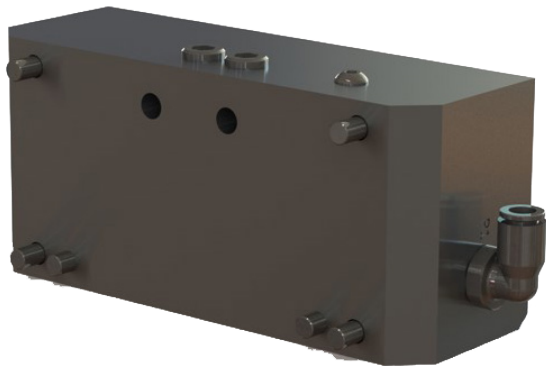
The solenoid coil is equipped with a protective circuit to arrest sparks and prevent polarity reversal.

PNEUMATIC SCHEMATIC

5/2 Spring-Return Valve, Pilot Actuated



PRODUCT INFORMATION



* Dimensions are in millimeters (inches).

** All dimensions are descriptive and subject to variation for technical upgrading. We reserve the right to make variations without prior notification.



Applied Robotics
648 Saratoga Road
Glenville, NY 12302 USA
Tel. +1 518 384 1000 Fax +1.5183841200
info@appliedrobotics.com
www.appliedrobotics.com



EFFECTO GROUP S.p.A.
Via Roma, 141/143
28017 San Maurizio d'Opaglio (NO) - Italy
Tel. +39 0322 96142 Fax +39 0322 967453
info@effecto.com
www.effecto.com

