

Aluminum spiral beam coupling ▶ Clamping screw ▶ Short type

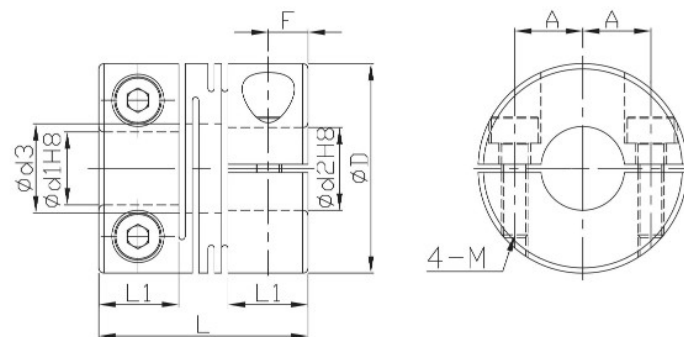


Flexible | Spiral beam coupling

FACMS



- Zero backlash.
- The flexure allowed by the beam portion of the coupling is capable of accommodating angular, and axial misalignment.
- No accommodating to parallel misalignment.
- High wrench torque rigidity and sensitivity.
- Rotation character of clockwise or anti-clockwise are exactly the same.
- Free maintenance, oil-resist and anti-corrosiveness.
- FACMS can't allow axial deviation caused by offset
- Offset of angular, parallel, or axial deviation are individual allowed value, so couple reasons of axial offset appearing at same time would reduce the unit allowable value.



$$*\text{Ød3}=\text{Ød2}+0.5$$

Material	Surface finish	Accessories
Aluminum Alloy	Anodized	Clamping screw

Dimensions		Ød1	Ød2								L	L1	M Rough thread	A	F
Model no.	ØD		4	5	6	7	8	10	12	14					
FACMS	12	4	●	●							14	5.2	2	4	2.6
		5		●											
	16	5		●	●						18	6.8	2.5	5	3.4
		6			●										
	20	5			●	●	●				20	7.65		6.5	3.8
		6			●	●	●								
		8					●								
	25	5			●						25	9.6	3	9	4.8
		6			●		●	●							
		8					●	●							
		10						●							
		8					●	●							

Flexible

Spiral beam coupling