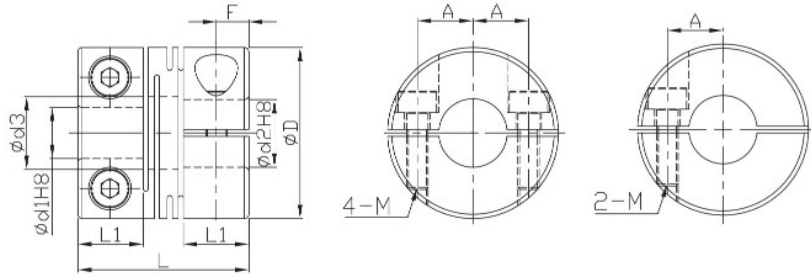


FSCMS



- Zero backlash.
- The flexure allowed by the beam portion of the coupling is capable of accommodating angular, and axial misalignment.
- No accommodating to parallel misalignment.
- High wrench torque rigidity and sensitivity.
- Rotation character of clockwise or anti-clockwise are exactly the same.
- Free maintenance, oil-resist and anti-corrosiveness.
- FSCMS can't allow axial deviation caused by offset
- Offset of angular, parallel, or axial deviation are individual allowed value, so couple reasons of axial offset appearing at same time would reduce the unit allowable value.



* $\text{Ød3} = \text{Ød2} + 0.5$
 *1pc clamping screw in ØD12~DØ32 of stainless steel type.

Material	Accessories
SUS303	Clamping screw

Dimensions		Ød1	Ød2								L	L1	M Rough thread	A	F
Model no.	ØD		4	5	6	7	8	10	12	14					
FSCMS	12	4	•	•							14	5.2	2	4	2.6
		5		•											
	16	5		•	•						18	6.8	2.5	5	3.4
		6			•										
	20	5			•	•	•				20	7.65	2.5	6.5	3.8
		6			•	•	•								
		8				•									
	25	5			•			•	•		25	9.6	3	9	4.8
		6			•			•	•						
		8						•	•						
	32	8					•	•			32	12.6	4	11	6.3
		10						•	•	•					
12								•	•						

★ Moment of inertial torque and weight calculated by maximum diameter.

Specification		Allowable wrench torque (N·m)	Allowable misalignment		Static torsional stiffness (N·m/rad)	Max. RPM (r/min ⁻¹)	★ Moment of inertia (kg·m ²)	Screw fixing torque (N·m)	★ Weight (g)
Model no.	ØD		Angular (°)	Axial (mm)					
FSCMS	12	0.3	1	±0.1	140	12000	1.8×10^{-7}	0.5	8.5
	16	0.5			240	9500	7.8×10^{-7}	1	21
	20	1		±0.2	330	7600	2.1×10^{-6}		36
	25	2			720	6100	6.3×10^{-6}		1.5
	32	3.5			1300	4800	2.2×10^{-5}	2.5	150

Ordering Example: FSCMS25 - 6 - 8 - 100 PCS
 Model no. Ød1 Ød2 Q'ty