

Stainless steel spiral beam coupling ► Set screw ► Short type



Flexible | Spiral beam coupling

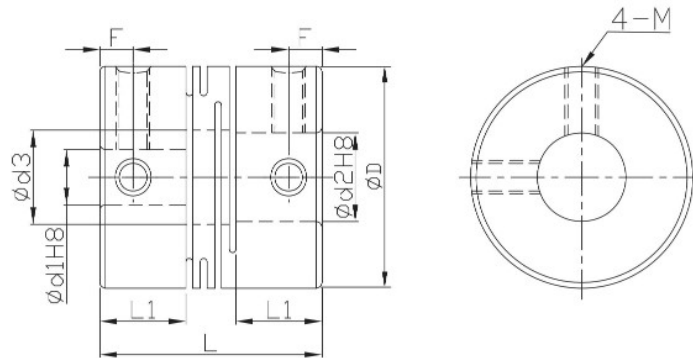
Flexible

Spiral beam coupling

FSMMS



- Zero backlash.
- The flexure allowed by the beam portion of the coupling is capable of accommodating angular, and axial misalignment.
- No accommodating to parallel misalignment.
- High wrench torque rigidity and sensitivity.
- Rotation character of clockwise or anti-clockwise are exactly the same.
- Free maintenance, oil-resist and anti-corrosiveness.
- FSMMS can't allow axial deviation caused by offset
- Offset of angular, parallel, or axial deviation are individual allowed value, so couple reasons of axial offset appearing at same time would reduce the unit allowable value.



$$*\varnothing d3 = \varnothing d2 + 0.5$$

*When $\varnothing d1 < 4$ and $\varnothing d2 > 5$, there would be 3 set screws.
When $\varnothing d1$ and $\varnothing d2$ both smaller than 4, there would be 2 set screws.

Material	Accessories
SUS303	Set screw

Dimensions		Ød1	Ød2										L	L1	M Rough thread	F		
Model no.	ØD		2	3	4	5	6	7	8	10	12	14						
FSMMS	8	2	●										10	3.4	2	1.7		
		3		●														
	12	4			●	●							14	5.2	2.5	2.5		
		5				●												
	16	5				●	●						18	6.8	3	3		
		6					●											
	20	5					●	●	●				20	7.65				
		6					●	●	●									
		8							●									
	25	5					●						25	9.6	4	4		
		6					●			●								
		6.35							●	●								
8								●	●									
10									●									