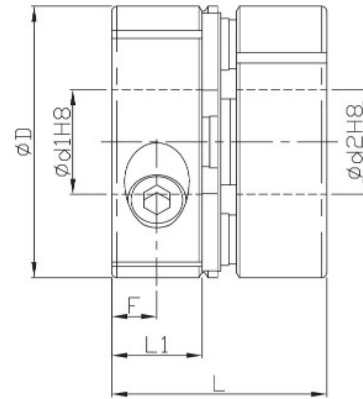
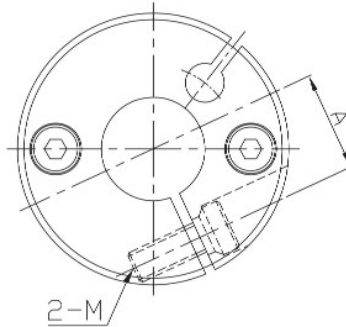


FACCS



- High wrench torque load, high wrench torque rigidity capacity and excellent sensibility.
- Zero backlash.
- The flexure allowed by the stainless steel disk portion of the coupling is capable of accommodating angular, and axial misalignment.
- No accommodating to parallel misalignment.
- Clockwise character is exactly the same as anti-clockwise one.
- Free maintenance, oil-resist and anti-corrosiveness.
- Teethless screw to lock disks.
- Offset of angular, parallel, or axial deviation are individual allowed value, so couple reasons of axial offset appearing at same time would reduce the unit allowable value.



Component	Material	Surface finish	Accessories
Main frame	Aluminum Alloy	Anodized	Clamping screw
Disk	SUS303	—	

Dimensions		Ød1&Ød2 selection *Ød1 ≤ Ød2														L	L1	A	F	Clamping screw			
Model no.	ØD	4	5	6	8	9	10	11	12	14	15	17	19	20	22	24	25					M	Lock torque (N·m)
FACCS	21	•	•	•	•	•												16.7	7	7	3.5	M2.5	1.2
	28		•	•	•	•	•											21	9	9.5	4	M3	1.5
	34			•	•	•	•	•	•	•								23.3	9.8	12	5	M3	1.5
	46				•	•	•	•	•	•	•	•	•					29.8	12.6	16.5	6	M4	3.5
	55									•	•	•	•	•	•	•	•	37.2	16	20.5	7	M5	6

★ Moment of inertial torque and weight calculated by maximum diameter.

Specification		Allowable wrench torque (N·m)	Allowable misalignment		Static torsional stiffness (N·m/rad)	Max. RPM (r/min ⁻¹)	★ Moment of inertia (kg·m ²)	★ Weight (g)
Model no.	ØD		Angular (°)	Axial (mm)				
FACCS	21	1.2	1.0	±0.10	1500	10000	7.90*10 ⁻⁷	12
	28	1.6	1.2		1800		3.24*10 ⁻⁶	30
	34	4	1.5		3600		7.60*10 ⁻⁶	45
	46	10		10000	3.23*10 ⁻⁵		105	
	55	25		20000	8.19*10 ⁻⁵		180	

Ordering Example: FACCS34 - 10 - 14 - 100 PCS
 Model no. Ød1 Ød2 Q'ty