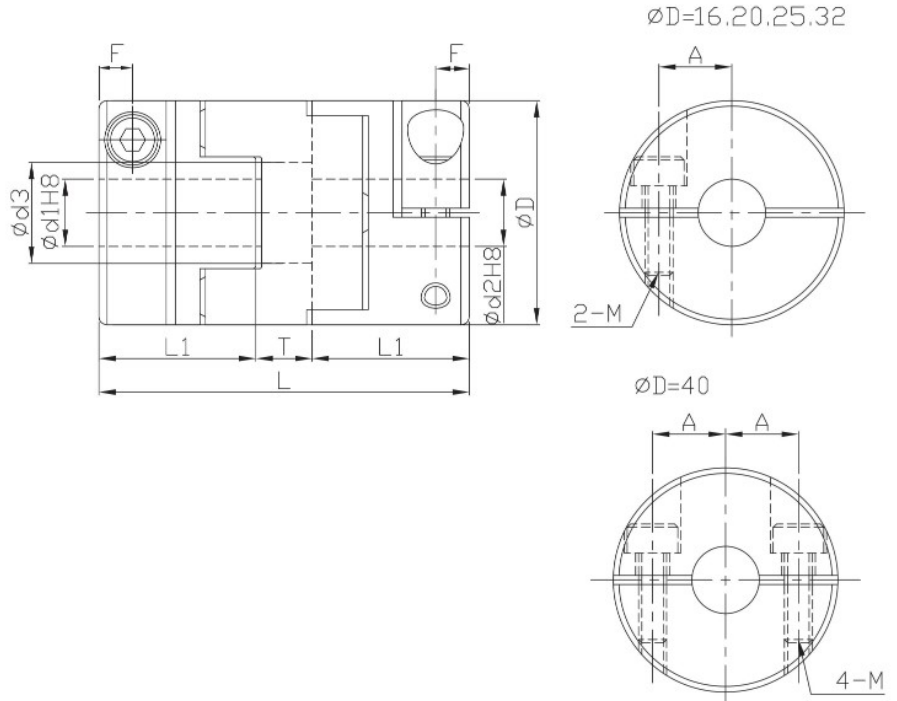


# FACPL



- Operating temperature : -20°C~80°C
- Offset of angular, parallel, or axial deviation are individual allowed value, so couple reasons of axial offset appearing at same time would reduce the unit allowable value.



Component	Material	Surface finish	Accessories
Main frame	Aluminum Alloy	Anodized	Clamping screw
Spacer	(POM)	—	

Dimensions	Ød1&Ød2 selection *Ød1 ≤ Ød2														Ød3	L	L1	T	F	A	Clamping screw		
	Model no.	ØD	4	5	6	6.35	7	8	9.525	10	11	12	14	15							16	M	Lock torque (N·m)
FACPL	16		•	•	•											7	29	13	3		5	2.5	1
	20			•	•	•	•									9	33	14	5	3	6.5		
	25				•	•	•	•	•							11	39	17	5	3.8	9	3	1.5
	32							•	•	•	•	•	•			14.5	45	19	7	4.5	11	4	2.5
	40											•	•	•	•	17	50	23	4	7	13	5	4

★ Moment of inertial torque and weight calculated by maximum diameter.

Specification		Allowable wrench torque (N·m)	Allowable misalignment		Static torsional stiffness (N·m/rad)	Max. RPM (r/min <sup>-1</sup> )	★ Moment of inertia (kg·m <sup>2</sup> )	★ Weight (g)
Model no.	ØD		Angular (°)	Parallel (mm)				
FACPL	16	0.7	3	1.0	31	9500	5.8*10 <sup>-7</sup>	12
	20	1.2		1.5	60	7600	1.5*10 <sup>-6</sup>	19
	25	2		2.0	140	6100	4.4*10 <sup>-6</sup>	36
	32	4.5		2.5	280	4800	1.4*10 <sup>-5</sup>	69
	40	9		3.0	540	3800	4.1*10 <sup>-5</sup>	130

Ordering Example: FACPL16 - 8 - 10 - 100 PCS  
 Model no. - Ød1 - Ød2 - Q'ty