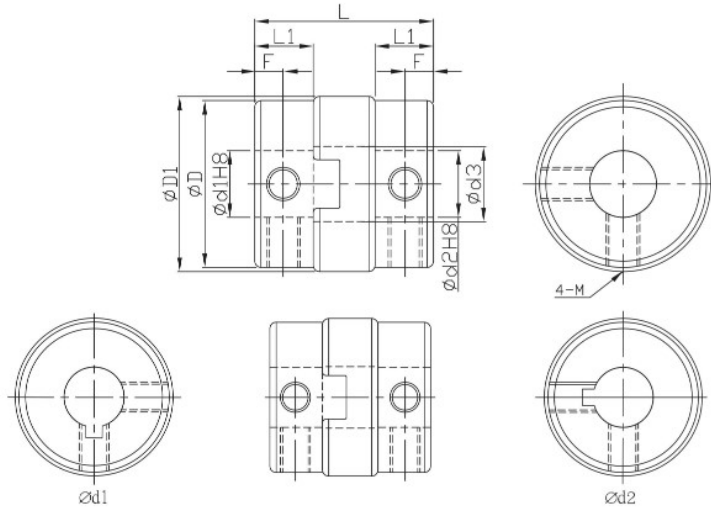


FSMG



- Offset of angular, parallel, or axial deviation are individual allowed value, so couple reasons of axial offset appearing at same time would reduce the unit allowable value.
- Suit for high wrench torque, high rotation.
- In case of parallel deviation over 0.1, abrasion of the insert is direct ration to load torque, offset, and rotation numbers.
- Available options for key way per inner diameter is bigger than 6mm. (Refer to page 38)



FSMGLK (key way Ød1 side)
 FSMGRK (key way Ød2 side)
 FSMGWK (key way Ød1 and Ød2 side)

Component	Material	Accessories
Main frame	SUS304 Alloy	Set screw
Spacer	Aluminum bronze(filled with Solid lubricant)	

Dimensions	Ød1&Ød2 selection *Ød1 ≤ Ød2																ØD	ØD1	Ød3	L	L1	F	Set screw		
	Model no.	ØD	4	5	6	6.35	7	8	9.525	10	11	12	14	15	16	18							20	M	Lock torque (N·m)
FSMG	15	15	●	●	●	●	●											14.5	15	7.2	16	5.4	2.6	3	0.7
	17	17		●	●	●	●											16.8	17.5	8.2	19.8	6.7	3.2	4	1.7
	20	20			●	●	●	●	●	●	●							20	21	9	21.6	7	3.4		
	26	26			●	●	●	●	●	●	●	●						26	27	12	25.6	9	4		
	30	30						●		●		●	●					30	31	14	33	12	6		
	34	34								●	●	●	●	●	●			34	35	14	34	13	5.5	5	4.0
38	38								●		●	●	●	●	●		38	41	17	39.5	15	7			

*Moment of inertial torque and weight calculated by maximum diameter.

Specification	Model no.	ØD	Allowable wrench torque (N·m)	Allowable misalignment			Static torsional stiffness (N·m/rad)	Max. RPM (r/min ⁻¹)	★ Moment of inertia (kg·m ²)	★ Weight (g)
				Angular (°)	Parallel (mm)	Axial (mm)				
FSMG	15	15	3	1.5	0.5	±0.1	800	8000	4*10 ⁻⁹	15
	17	17	5		0.5	±0.1	1000	7000	1*10 ⁻⁷	25
	20	20	7		0.5	±0.1	2200	6000	2*10 ⁻⁶	37
	26	26	10		0.8	±0.2	4000	5000	6*10 ⁻⁶	79
	30	30	30		1	±0.3	5500	5000	2.5*10 ⁻⁵	120
	34	34	32		1	±0.2	8000	4000	4*10 ⁻⁵	180
	38	50	50	1	±0.3	11000	4000	1*10 ⁻⁴	256	

Ordering Example: **FSMG26** - **8** - **12** - **100 PCS**
 Model no. Ød1 Ød2 Q'ty