

FACK



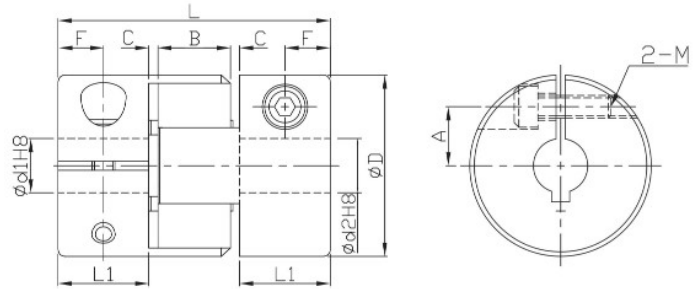
(B)



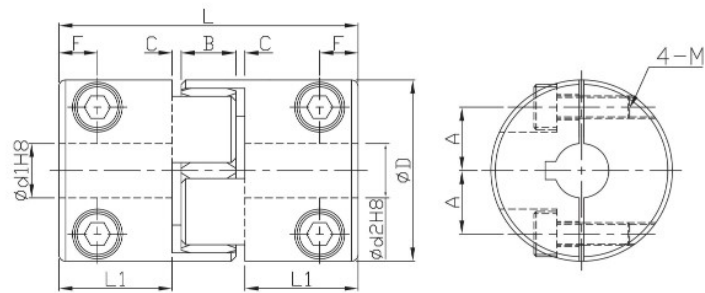
(W)



(R)



FACK ØD=14,20,30



FACK ØD=40

- Operating temperature : -20°C~60°C
- Offset, deflection, shaft deviation are individual allowed values, so axial offsets in all reasons appearing at same time would reduce values.

Component	Material	Surface finish	Accessories
Main frame	Aluminum Alloy	Anodized	Clamping screw
Spider	Urethane(PU)	—	

★ Dimension "C", must be previously reserved while assembly by users, otherwise it would affect allowed deflection, accelerating shaft and coupling damage.

Dimensions		Spider (color selection)	Ød1&Ød2 selection *Ød1 ≤ Ød2					L	L1	B	C	F	A	Clamping screw		
Model no.	ØD		10	11	12	14	15							16	M	Lock torque (N·m)
FACK	30	B (Blue)	•	•	•				35	11	10	1.5	5.5	10	4	2.5
	40	W (White)	•	•	•	•	•	•	66	25	12	2	8.5	14	5	4

★ Moment of inertial torque and weight calculated by maximum diameter.

Specification		Allowable wrench torque (N·m)			Allowable misalignment			Static torsional stiffness (N·m/rad)			Max. RPM (r/min ⁻¹)	★ Moment of inertia (kg·m ²)	★ Weight (g)	
Model no.	ØD	B	W	R	Angular (°)	Parallel (mm)		Axial (mm)	B	W				R
						FACK	30				4	7.5	12.5	
40	4.9	10	17	0.15	0.10		+1.2 0	380	570	1200	3800	3.7*10 ⁻⁵	160	

©FACE&FAK spider selection and installation remark please refer to P.51

Ordering Example: FACK30 - 10 - 12 - 100 PCS
Model no. - Ød1 - Ød2 - Q'ty