

FAMK



(B)

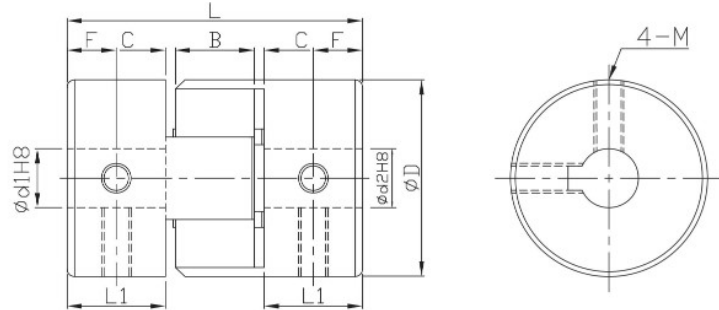


(W)

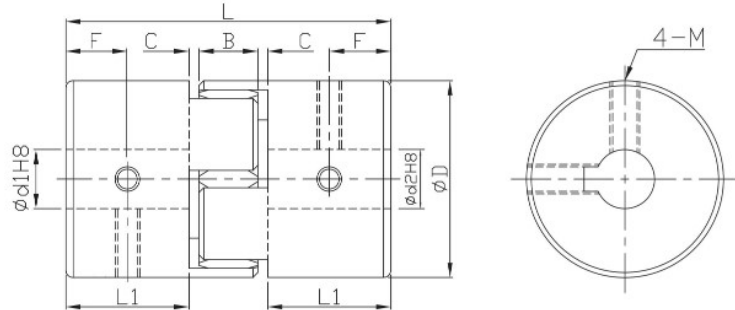


(R)

- Operating temperature : -20°C~60°C
- Offset of angular, parallel, or axial deviation are individual allowed value, so couple reasons of axial offset appearing at same time would reduce the unit allowable value.



FAMK ØD=30



FAMK ØD=40

Component	Material	Surface finish	Accessories
Main frame	Aluminum Alloy	Anodized	Set screw
Spider	Urethane(PU)	—	

★ Dimension "C", must be previously reserved while assembly by users, otherwise it would affect allowed deflection, accelerating shaft and coupling damage.

Dimensions		Spider (color selection)	Ød1&Ød2 selection *Ød1 ≤ Ød2					L	L1	B	C	F	Set screw		
Model no.	ØD		10	11	12	14	15						16	M	Lock torque (N·m)
FAMK	30	B (Blue)	•	•	•	•			35	11	10	1.5	5.5	4	1.7
		W (White)													
	40	R (Red)	•	•	•	•	•	•	66	25	12	2	12.5	5	4

★ Moment of inertial torque and weight calculated by maximum diameter.

Specification		Allowable wrench torque (N·m)			Allowable misalignment			Static torsional stiffness (N·m/rad)	Max. RPM (r/min ⁻¹)	★ Moment of inertia (kg·m ²)	★ Weight (g)				
Model no.	ØD				Angular (°)	Parallel (mm)						Axial (mm)	B	W	R
		B	W	R		B	W	R							
FAMK	30	4	7.5	12.5	1.0	0.20	0.15	0.10	+1.00	46	73	130	5100	5.8*10 ⁻⁶	45
											0				
	40	4.9	10	17		0.15	0.10		+1.20	380	570	1200	3800	3.8*10 ⁻⁵	150
									0						

©FAME&FAMK spider selection and installation remark please refer to P.51

Ordering Example: FAMK30 - 12 - 14 - 100 PCS
Model no. Ød1 Ød2 Q'ty