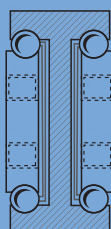
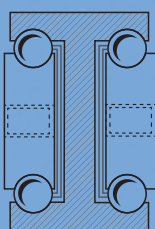
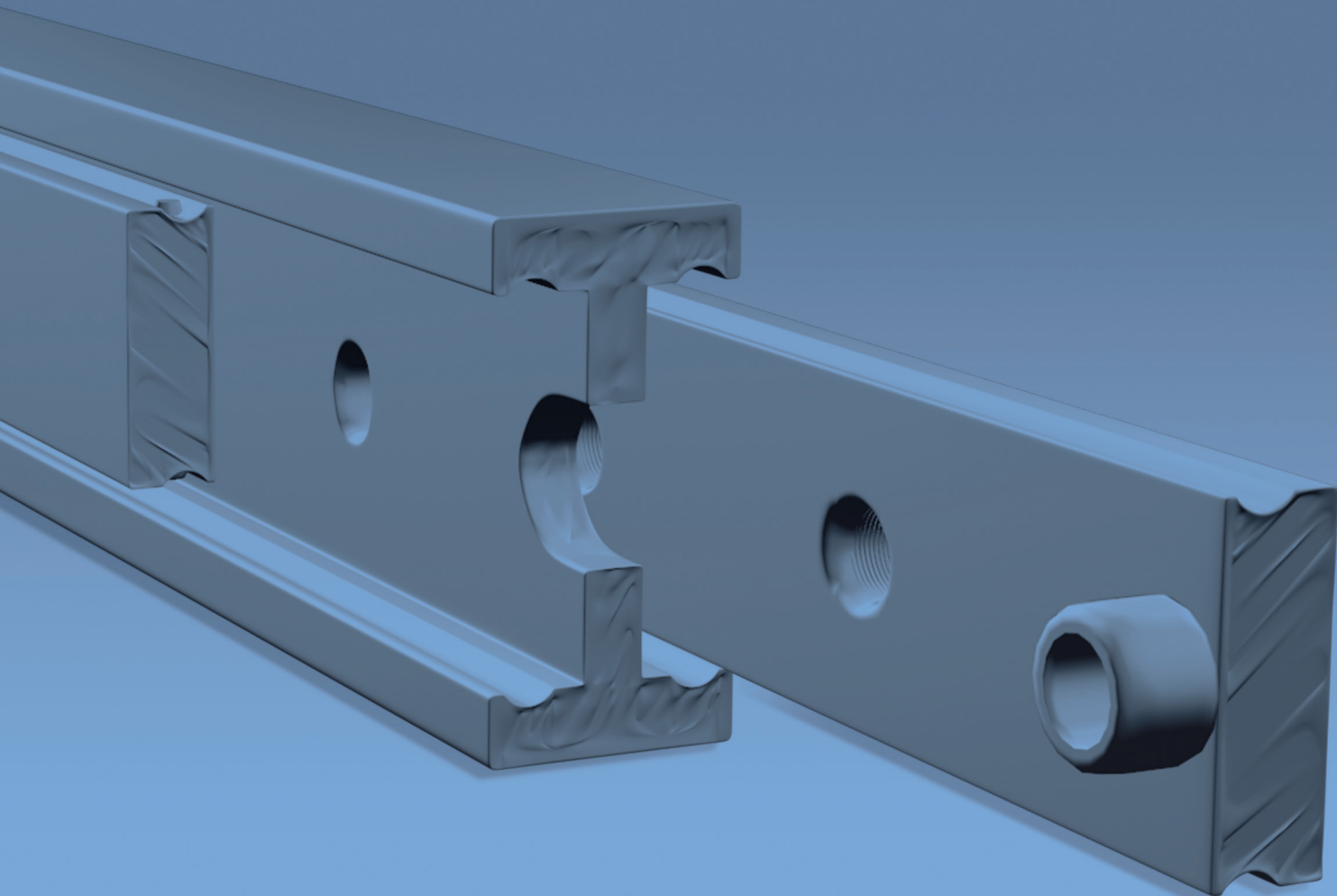


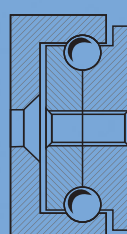
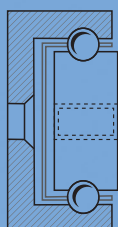
MILUXOR

TELESKOPSCHIEBEN

YOUR MANUFACTURER FOR TELESCOPIC RAILS FOR HEAVY LOADS



PRODUCT CATALOG



MANUFACTURER OF TELESCOPIC RAILS FOR HEAVY LOADS



We, the company Milluxor GmbH, are manufacturers for heavy load telescopic rails. Our products can, except the usual standard versions, individually tailored to you, since we carry out the production in our own factory.

Profile types:

- T-profile type full extension
- S-profile type full extension
- U-profile type partially extension
- SU-profile type sled

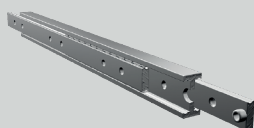
**Also custom-made with overextending rails and two-sided extract (on request with continuous lock) can be made in our factory.
In addition to the standard holes, customer-specific holes are also possible.
For this, a sketch made by you will arrive.**

Material versions in:

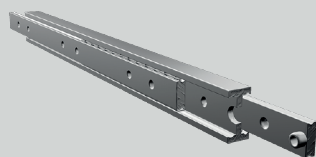
- C45
- Aluminum
- Stainless steel

Since the telescopic rails can be exposed to very high loads (per pair in the extended position with even weight distribution)

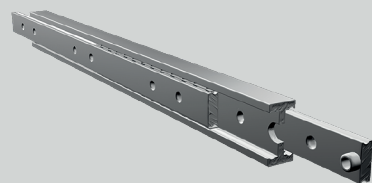
They are used in many industrial areas.
We are always at your disposal with our experience and will find the best solution for you. Just contact us.



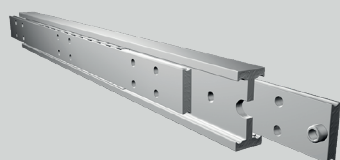
MX-DTP 30



MX-DTP 40



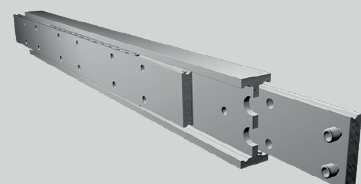
MX-DTP 50



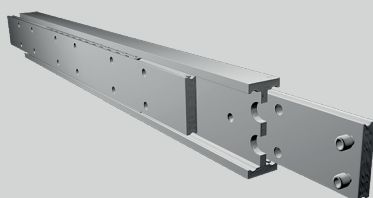
MX-DTP 70



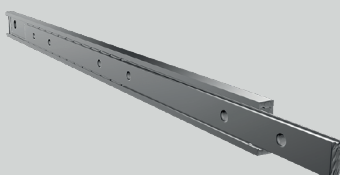
MX-DTP 90



MX-DTP 100



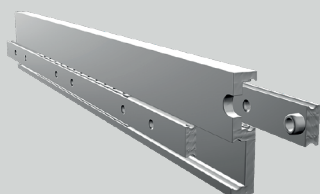
MX-DTP 145



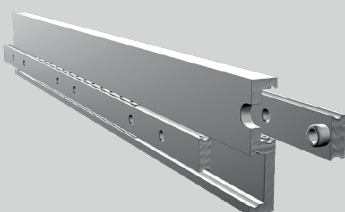
MX-CP 30



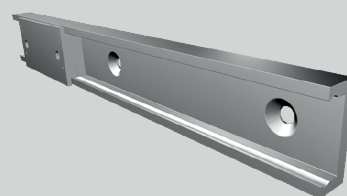
MX-CP 40



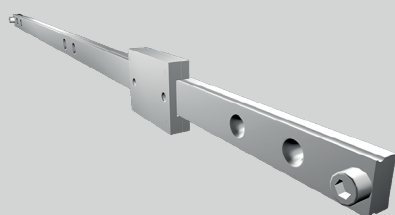
MX-S 70



MX-S 100



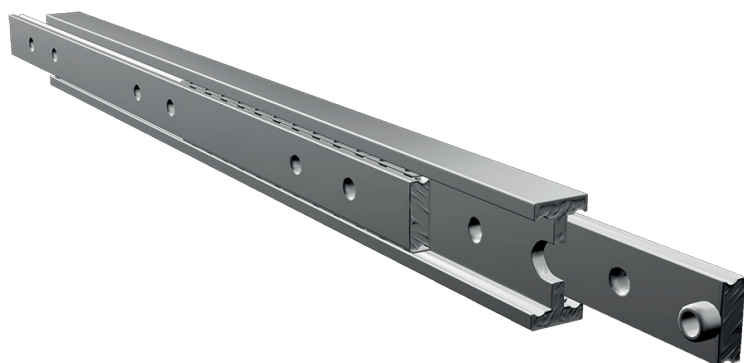
MX-ST 40



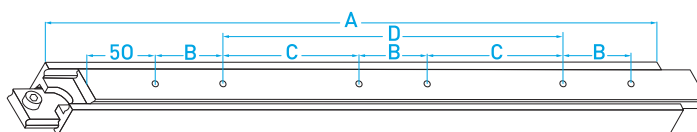
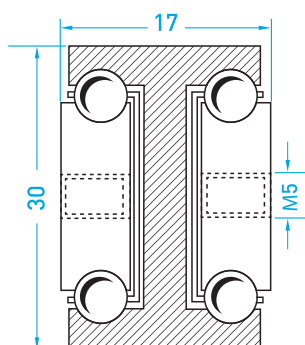
MX-ST 60



miluxor-schienen.de



OPTIONAL WITH EXTRACT IN BOTH DIRECTIONS



The MX-DTP 30 fully extending rails offers high load capacity in a small footprint. Depending on the length, it is fastened by 4 or 6 M5 threaded holes in the middle.

Extension length = installation length

Overall length = installation length + extension length

DTP full extension

Type: MX-DTP 30

Article no. DTP 30

Material versions in:

C45

Aluminum

Stainless steel

Special entitlements:

**OVEREXTENDING RAILS / EXTRACT LENGTH =
INSTALLATION LENGTH + 50% ABOVE EXTRACT /
EXTRACT LENGTH = INSTALLATION LENGTH +
100% WITH FORWARD AND REVERSE WITH
FORWARD AND REVERSE WITH CONTINUOUS
BORING**

MX-DTP 30 Drilling pattern table

Article No.	Dimension A	Dimension B	Dimension C	Dimension D
DTP30.030	300	50	---	100
DTP30.035	350	50	---	150
DTP30.040	400	50	---	200
DTP30.045	450	50	---	250
DTP30.050	500	50	---	300
DTP30.055	550	50	150	---
DTP30.060	600	50	175	---
DTP30.065	650	50	200	---
DTP30.070	700	50	225	---
DTP30.075	750	50	250	---
DTP30.080	800	50	275	---

MX-DTP 30 load table

Type: MX-DTP 30	Article-No.MX -DTP 30 ...	
Article No.	Installation length	Load in kg *
DTP30.030	300	120
DTP30.035	350	120
DTP30.040	400	125
DTP30.045	450	130
DTP30.050	500	135
DTP30.055	550	140
DTP30.060	600	140
DTP30.065	650	135
DTP30.070	700	130
DTP30.075	750	125
DTP30.080	800	120

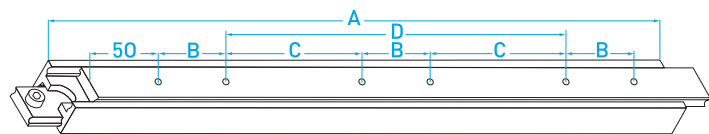
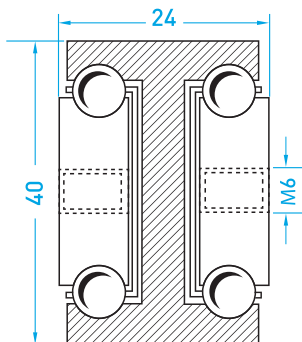
***Load per pair in extended position, even weight distribution and vertical installation.**

*Load per pair in extended position, even weight distribution and vertical installation.

NOTE



OPTIONAL WITH EXTRACT IN BOTH DIRECTIONS



The MX-DTP 40 fully extending rails offers high load capacity with a small footprint. Depending on the length, it is fastened by 4 or 6 M6 threaded holes in the middle.

Extension length = installation length

Overall length = installation length + extension length

DTP full extension

Type: MX-DTP 40

Article no. DTP 40

Material versions in:

C45 galvanized

Stainless steel

Aluminum

Special entitlements:

**OVEREXTENDING RAILS / EXTRACT LENGTH =
INSTALLATION LENGTH + 50% ABOVE EXTRACT /
EXTRACT LENGTH = INSTALLATION LENGTH +
100% WITH FORWARD AND REVERSE WITH
FORWARD AND REVERSE WITH CONTINUOUS
BORING**

MX-DTP 40 Drilling pattern table

Article No.	Dimension A	Dimension B	Dimension C	Dimension D
DTP40.030	300	50	---	100
DTP40.035	350	50	---	150
DTP40.040	400	50	---	200
DTP40.045	450	50	---	250
DTP40.050	500	50	---	300
DTP40.055	550	50	150	---
DTP40.060	600	50	175	---
DTP40.065	650	50	200	---
DTP40.070	700	50	225	---
DTP40.075	750	50	250	---
DTP40.080	800	50	275	---
DTP40.085	850	50	300	---
DTP40.090	900	50	325	---
DTP40.095	950	50	350	---
DTP40.100	1000	50	375	---

MX-DTP 40 load table

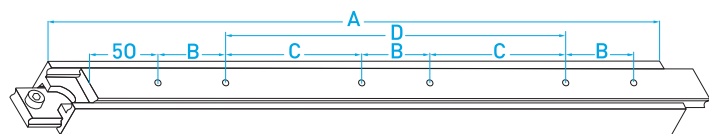
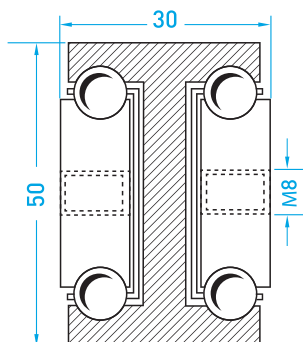
Type: MX-DTP 40	Article-No.MX -DTP 40 ...	
D Article No.	Installation length	Load in kg *
DTP40.030	300	240
DTP40.035	350	260
DTP40.040	400	280
DTP40.045	450	300
DTP40.050	500	310
DTP40.055	550	330
DTP40.060	600	340
DTP40.065	650	340
DTP40.070	700	330
DTP40.075	750	325
DTP40.080	800	320
DTP40.085	850	315
DTP40.090	900	310
DTP40.095	950	305
DTP40.100	1000	300
*Load per pair in extended position, even weight distribution and vertical installation.		

*Load per pair in extended position, even weight distribution and vertical installation.

NOTE



OPTIONAL WITH EXTRACT IN BOTH DIRECTIONS



The MX-DTP 50 fully extending rails offers high load capacity in a small footprint. The attachment is made according to length by 4 or 6 located in the middle M8 threaded holes.

Extension length = installation length

Overall length = installation length + extension length

DTP full extension

Type: MX-DTP 50

Article no. DTP 50

Material versions in:

C45

Aluminum

Stainless steel

Special entitlements:

**OVEREXTENDING RAILS / EXTRACT LENGTH =
INSTALLATION LENGTH + 50% ABOVE EXTRACT /
EXTRACT LENGTH = INSTALLATION LENGTH +
100% WITH FORWARD AND REVERSE WITH
FORWARD AND REVERSE WITH CONTINUOUS
BORING**

MX-DTP 50 Drilling pattern table

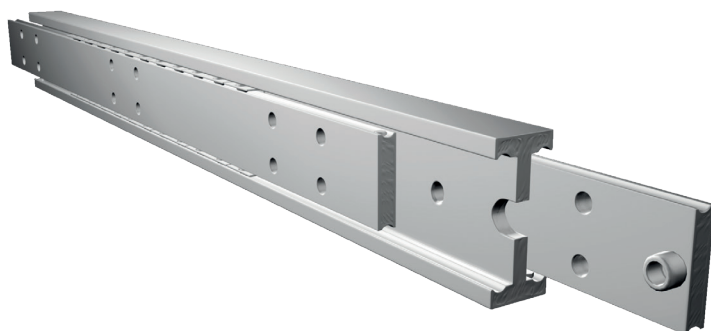
Article No.	Dimension A	Dimension B	Dimension C	Dimension D
DTP50.030	300	50	---	100
DTP50.035	350	50	---	150
DTP50.040	400	50	---	200
DTP50.045	450	50	---	250
DTP50.050	500	50	---	300
DTP50.055	550	50	150	---
DTP50.060	600	50	175	---
DTP50.065	650	50	200	---
DTP50.070	700	50	225	---
DTP50.075	750	50	250	---
DTP50.080	800	50	275	---
DTP50.085	850	50	300	---
DTP50.090	900	50	325	---
DTP50.095	950	50	350	---
DTP50.100	1000	50	375	---
DTP50.105	1050	50	400	---
DTP50.110	1100	50	425	---
DTP50.115	1150	50	450	---
DTP50.120	1200	50	475	---

MX-DTP 50 load table

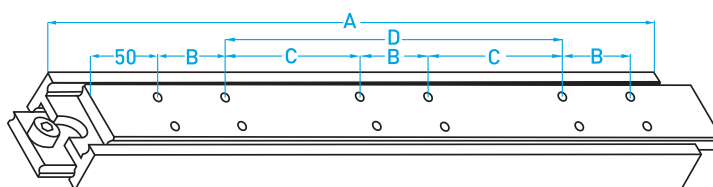
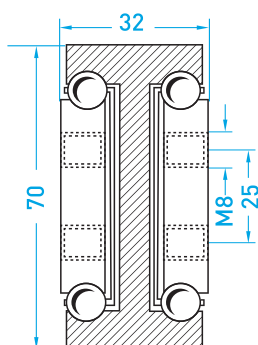
Type: MX-DTP 50	Article-No.MX -DTP 50 ...	
Article No.	Installation length	Load in kg *
DTP50.030	300	300
DTP50.035	350	310
DTP50.040	400	320
DTP50.045	450	330
DTP50.050	500	350
DTP50.055	550	380
DTP50.060	600	400
DTP50.065	650	395
DTP50.070	700	390
DTP50.075	750	385
DTP50.080	800	380
DTP50.085	850	375
DTP50.090	900	370
DTP50.095	950	365
DTP50.100	1000	360
DTP50.105	1050	355
DTP50.110	1100	350
DTP50.115	1150	345
DTP50.120	1200	340
DTP50.125	1250	335
DTP50.130	1300	330
DTP50.135	1350	325
DTP50.140	1400	320

***Load per pair in extended position, even weight distribution and vertical installation.**

NOTE



OPTIONAL WITH EXTRACT IN BOTH DIRECTIONS



The MX-DTP 70 fully extending rails offers very high load capacity. Depending on the length, it is fastened by 8 or 12 M8 threaded holes.

Extension length = installation length

Overall length = installation length + extension length

DTP full extension

Type: MX-DTP 70

Article no. DTP 70

Material versions in:

C45

Aluminum

Stainless steel

Special entitlements:

**OVEREXTENDING RAILS / EXTRACT LENGTH =
INSTALLATION LENGTH + 50% ABOVE EXTRACT /
EXTRACT LENGTH = INSTALLATION LENGTH +
100% WITH FORWARD AND REVERSE WITH
FORWARD AND REVERSE WITH CONTINUOUS
BORING**

MX-DTP 70 Drilling pattern table

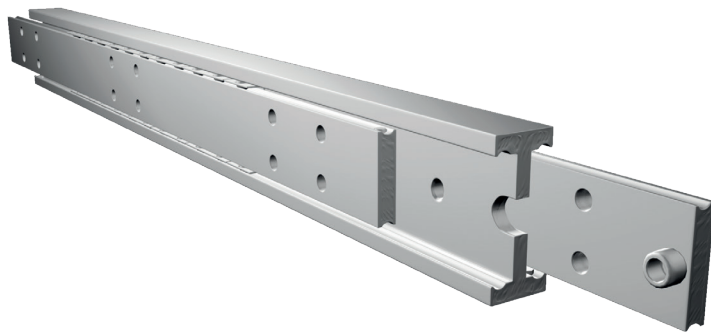
Article No.	Dimension A	Dimension B	Dimension C	Dimension D
DTP70.040	400	50	---	200
DTP70.045	450	50	---	250
DTP70.050	500	50	---	300
DTP70.055	550	50	---	350
DTP70.060	600	50	---	400
DTP70.065	650	50	200	---
DTP70.070	700	50	225	---
DTP70.075	750	50	250	---
DTP70.080	800	50	275	---
DTP70.085	850	50	300	---
DTP70.090	900	50	325	---
DTP70.095	950	50	350	---
DTP70.100	1000	50	375	---
DTP70.105	1050	50	400	---
DTP70.110	1100	50	425	---
DTP70.115	1150	50	450	---
DTP70.120	1200	50	475	---
DTP70.125	1250	50	500	---
DTP70.130	1300	50	525	---
DTP70.135	1350	50	550	---
DTP70.140	1400	50	575	---
DTP70.145	1450	50	600	---
DTP70.150	1500	50	625	---
DTP70.155	1550	50	650	---
DTP70.160	1600	50	675	---
DTP70.165	1650	50	700	---
DTP70.170	1700	100	650	---
DTP70.175	1750	100	675	---
DTP70.180	1800	100	700	---
DTP70.185	1850	100	725	---
DTP70.190	1900	100	750	---
DTP70.195	1950	100	775	---
DTP70.200	2000	100	800	---

MX-DTP 70 load table

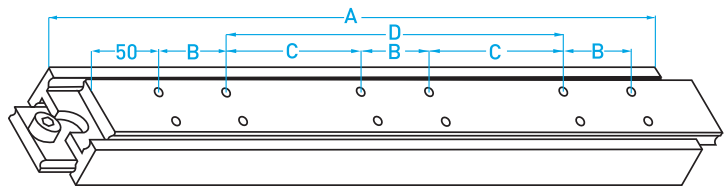
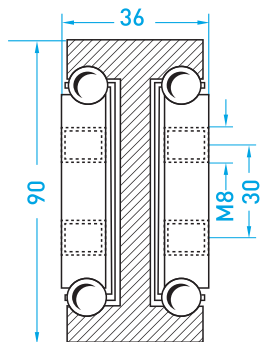
Type: MX-DTP 70	Article-No. MX -DTP 70 ...	
Article No.	Installation length	Load in kg *
DTP70.040	400	400
DTP70.045	450	410
DTP70.050	500	420
DTP70.055	550	430
DTP70.060	600	440
DTP70.065	650	450
DTP70.070	700	500
DTP70.075	750	550
DTP70.080	800	560
DTP70.085	850	580
DTP70.090	900	600
DTP70.095	950	620
DTP70.100	1000	650
DTP70.105	1050	660
DTP70.110	1100	660
DTP70.115	1150	650
DTP70.120	1200	640
DTP70.125	1250	620
DTP70.130	1300	600
DTP70.135	1350	580
DTP70.140	1400	560
DTP70.145	1450	540
DTP70.150	1500	520
DTP70.155	1550	500
DTP70.160	1600	480
DTP70.165	1650	460
DTP70.170	1700	440
DTP70.175	1750	420
DTP70.180	1800	400
DTP70.185	1850	380
DTP70.190	1900	360
DTP70.195	1950	340
DTP70.200	2000	320

*Load per pair in extended position, even weight distribution and vertical installation.

NOTE



OPTIONAL WITH EXTRACT IN BOTH DIRECTIONS



The MX-DTP 90 fully extending rails offers very high load capacity. The attachment is made by 12 threaded holes M8.

Extension length = installation length

Overall length = installation length + extension length

DTP full extension

Type: MX-DTP 90

Article no. DTP 90

Material versions in:

C45

Aluminum

Stainless steel

Special entitlements:

**OVEREXTENDING RAILS / EXTRACT LENGTH =
INSTALLATION LENGTH + 50% ABOVE EXTRACT /
EXTRACT LENGTH = INSTALLATION LENGTH +
100% WITH FORWARD AND REVERSE WITH
FORWARD AND REVERSE WITH CONTINUOUS
BORING**

MX-DTP 90 Drilling pattern table

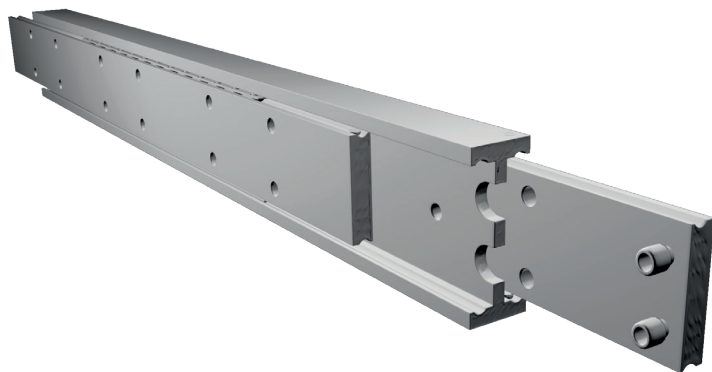
Article No.	Dimension A	Dimension B	Dimension C	Dimension D
DTP90.060	600	50	---	400
DTP90.065	650	50	200	---
DTP90.070	700	50	225	---
DTP90.075	750	50	250	---
DTP90.080	800	50	275	---
DTP90.085	850	50	300	---
DTP90.090	900	50	325	---
DTP90.095	950	50	350	---
DTP90.100	1000	50	375	---
DTP90.105	1050	50	400	---
DTP90.110	1100	50	425	---
DTP90.115	1150	50	450	---
DTP90.120	1200	50	475	---
DTP90.125	1250	50	500	---
DTP90.130	1300	50	525	---
DTP90.135	1350	50	550	---
DTP90.140	1400	50	575	---
DTP90.145	1450	50	600	---
DTP90.150	1500	50	625	---
DTP90.155	1550	50	650	---
DTP90.160	1600	50	675	---
DTP90.165	1650	50	700	---
DTP90.170	1700	100	650	---
DTP90.175	1750	100	675	---
DTP90.180	1800	100	700	---
DTP90.185	1850	100	725	---
DTP90.190	1900	100	750	---
DTP90.195	1950	100	775	---
DTP90.200	2000	100	800	---

MX-DTP 90 load table

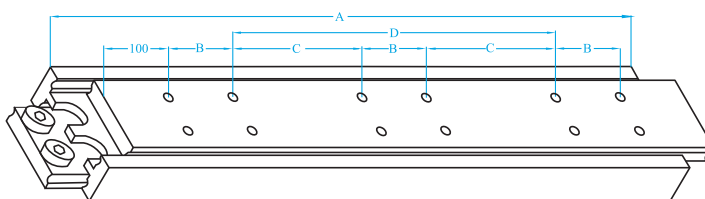
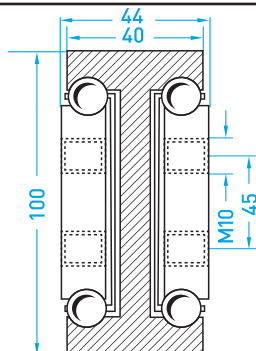
Type: MX-DTP 90	Article-No.MX -DTP 90 ...	
Article No.	Installation length	Load in kg *
DTP90.060	600	700
DTP90.065	650	720
DTP90.070	700	740
DTP90.075	750	760
DTP90.080	800	780
DTP90.085	850	800
DTP90.090	900	820
DTP90.095	950	830
DTP90.100	1000	840
DTP90.105	1050	850
DTP90.110	1100	840
DTP90.115	1150	830
DTP90.120	1200	820
DTP90.125	1250	810
DTP90.130	1300	800
DTP90.135	1350	790
DTP90.140	1400	780
DTP90.145	1450	760
DTP90.150	1500	740
DTP90.155	1550	720
DTP90.160	1600	700
DTP90.165	1650	680
DTP90.170	1700	660
DTP90.175	1750	640
DTP90.180	1800	620
DTP90.185	1850	600
DTP90.190	1900	580
DTP90.195	1950	560
DTP90.200	2000	550

*Load per pair in extended position, even weight distribution and vertical installation.

NOTE



OPTIONAL WITH EXTRACT IN BOTH DIRECTIONS



The MX-DTP 100 fully extending rails offers very high load capacity. The attachment is made by 12 threaded holes M10.

Extension length = installation length

Overall length = installation length + extension length

DTP full extension

Type: MX-DTP 100

Article no. DTP 100

Material versions in:

C45

Aluminum

Stainless steel

Special entitlements:

**OVEREXTENDING RAILS / EXTRACT LENGTH =
INSTALLATION LENGTH + 50% ABOVE EXTRACT /
EXTRACT LENGTH = INSTALLATION LENGTH +
100% WITH FORWARD AND REVERSE WITH
FORWARD AND REVERSE WITH CONTINUOUS
BORING**

MX-DTP 100 Drilling pattern table

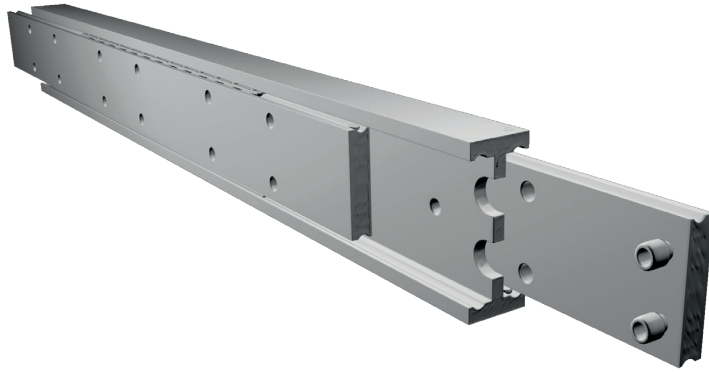
Article No.	Dimension A	Dimension B	Dimension C	Dimension D
DTP100.080	800	100	150	---
DTP100.085	850	100	175	---
DTP100.090	900	100	200	---
DTP100.095	950	100	225	---
DTP100.100	1000	100	250	---
DTP100.105	1050	100	275	---
DTP100.110	1100	100	300	---
DTP100.115	1150	100	325	---
DTP100.120	1200	100	350	---
DTP100.125	1250	100	375	---
DTP100.130	1300	100	400	---
DTP100.135	1350	100	425	---
DTP100.140	1400	100	450	---
DTP100.145	1450	100	475	---
DTP100.150	1500	100	500	---
DTP100.155	1550	100	525	---
DTP100.160	1600	100	550	---
DTP100.165	1650	100	575	---
DTP100.170	1700	100	600	---
DTP100.175	1750	100	625	---
DTP100.180	1800	100	650	---
DTP100.185	1850	100	675	---
DTP100.190	1900	100	700	---
DTP100.195	1950	100	725	---
DTP100.200	2000	100	750	---
DTP100.300	3000	100	1250	---

MX-DTP 100 load table

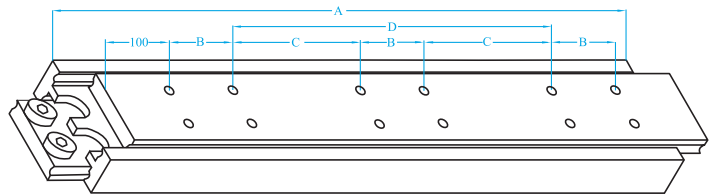
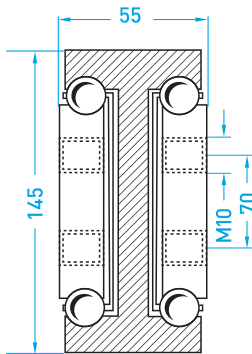
Type: MX-DTP 100	Article-No. MX -DTP 100 ...	
Article No.	Installation length	Load in kg *
DTP100.080	800	880
DTP100.085	850	900
DTP100.090	900	920
DTP100.095	950	940
DTP100.100	1000	960
DTP100.105	1050	980
DTP100.110	1100	1000
DTP100.115	1150	980
DTP100.120	1200	960
DTP100.125	1250	940
DTP100.130	1300	920
DTP100.135	1350	900
DTP100.140	1400	880
DTP100.145	1450	860
DTP100.150	1500	840
DTP100.155	1550	820
DTP100.160	1600	800
DTP100.165	1650	780
DTP100.170	1700	760
DTP100.175	1750	740
DTP100.180	1800	720
DTP100.185	1850	700
DTP100.190	1900	680
DTP100.195	1950	660
DTP100.200	2000	650

*Load per pair in extended position, even weight distribution and vertical installation.

NOTE



OPTIONAL WITH EXTRACT IN BOTH DIRECTIONS



The MX-DTP 145 fully extending rails offers very high load capacity. The attachment is made by 12 threaded holes M10.

Extension length = installation length

Overall length = installation length + extension length

DTP full extension

Type: MX-DTP 145

Article no. DTP 145

Material versions in:

C45

Aluminum

Stainless steel

Special entitlements:

**OVEREXTENDING RAILS / EXTRACT LENGTH =
INSTALLATION LENGTH + 50% ABOVE EXTRACT /
EXTRACT LENGTH = INSTALLATION LENGTH +
100% WITH FORWARD AND REVERSE WITH
FORWARD AND REVERSE WITH CONTINUOUS
BORING**

MX-DTP 145 Drilling pattern table

Article No.	Dimension A	Dimension B	Dimension C	Dimension D
DTP145.080	800	100	150	---
DTP145.085	850	100	175	---
DTP145.090	900	100	200	---
DTP145.095	950	100	225	---
DTP145.100	1000	100	250	---
DTP145.105	1050	100	275	---
DTP145.110	1100	100	300	---
DTP145.115	1150	100	325	---
DTP145.120	1200	100	350	---
DTP145.125	1250	100	375	---
DTP145.130	1300	100	400	---
DTP145.135	1350	100	425	---
DTP145.140	1400	100	450	---
DTP145.145	1450	100	475	---
DTP145.150	1500	100	500	---
DTP145.155	1550	100	525	---
DTP145.160	1600	100	550	---
DTP145.165	1650	100	575	---
DTP145.170	1700	100	600	---
DTP145.175	1750	100	625	---
DTP145.180	1800	100	650	---
DTP145.185	1850	100	675	---
DTP145.190	1900	100	700	---
DTP145.195	1950	100	725	---
DTP145.200	2000	100	750	---

MX-DTP 145 load table

Type: MX-DTP 145	Article-No.MX -DTP 145 ...	
Article No.	Installation length	Load in kg *
DTP145.080	800	2200
DTP145.085	850	2300
DTP145.090	900	2400
DTP145.095	950	2500
DTP145.100	1000	2550
DTP145.105	1050	2500
DTP145.110	1100	2450
DTP145.115	1150	2400
DTP145.120	1200	2500
DTP145.125	1250	2600
DTP145.130	1300	2700
DTP145.135	1350	2700
DTP145.140	1400	2600
DTP145.145	1450	2550
DTP145.150	1500	2500
DTP145.155	1550	2450
DTP145.160	1600	2400
DTP145.165	1650	2350
DTP145.170	1700	2300
DTP145.175	1750	2250
DTP145.180	1800	2200
DTP145.185	1850	2150
DTP145.190	1900	2100
DTP145.195	1950	2050
DTP145.200	2000	2000

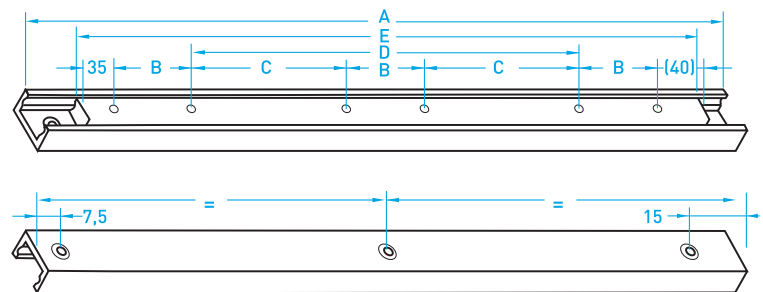
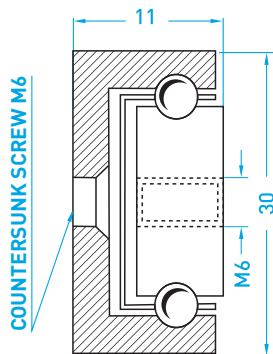
***Load per pair in extended position, even weight distribution and vertical installation.**

*Load per pair in extended position, even weight distribution and vertical installation.

NOTE



OPTIONAL WITH EXTRACT IN BOTH DIRECTIONS



The MX-CP 30- partially extending rails offers a high load capacity. Depending on the length, it is fastened by 2 or 3 M6 countersunk screws located in the middle of the U-profile. The inner rail is fastened by 4 or 6 M6 threaded holes.

Extension length = installation length
Overall length = installation length + extension length

CP- Partially extending rails
Type: MX-CP 30
Article no. CP 30

Material versions in:

C45
Aluminum
Stainless steel

Special entitlements:

OVEREXTENDING RAILS / EXTRACT LENGTH = INSTALLATION LENGTH + 50% ABOVE EXTRACT / EXTRACT LENGTH = INSTALLATION LENGTH + 100% WITH FORWARD AND REVERSE WITH CONTINUOUS BORING

MX-CP 30 Drilling pattern table

Article No.	Dimension A	Dimension B	Dimension C	Dimension D	Dimension E
CP30.025	250	50	---	50	225
CP30.030	300	50	---	100	275
CP30.035	350	50	---	150	325
CP30.040	400	50	---	200	375
CP30.045	450	50	---	250	425
CP30.050	500	50	125	---	475
CP30.055	550	50	150	---	525
CP30.060	600	50	175	---	575
CP30.065	650	50	200	---	625
CP30.070	700	50	225	---	675
CP30.075	750	50	250	---	725
CP30.080	800	50	275	---	775
CP30.085	850	50	300	---	825
CP30.090	900	50	325	---	875
CP30.095	950	50	350	---	925
CP30.100	1000	50	375	---	975

MX-CP 30 load table

Type: MX-CP 30	Article-No.MX -CP 30 ...	
Article No.	Installation length	Load in kg *
CP30.025	250	145
CP30.030	300	140
CP30.035	350	135
CP30.040	400	130
CP30.045	450	120
CP30.050	500	115
CP30.055	550	110
CP30.060	600	105
CP30.065	650	100
CP30.070	700	95
CP30.075	750	90
CP30.080	800	85
CP30.085	850	80
CP30.090	900	75
CP30.095	950	70
CP30.100	1000	60

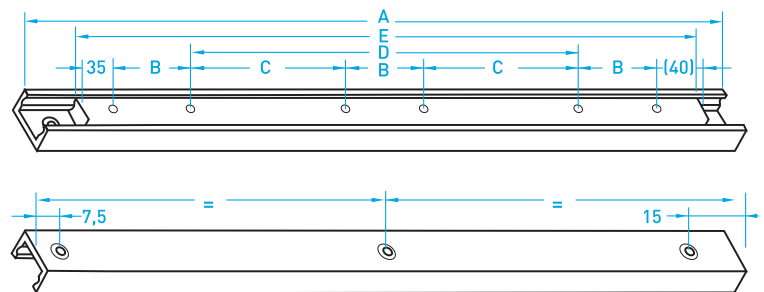
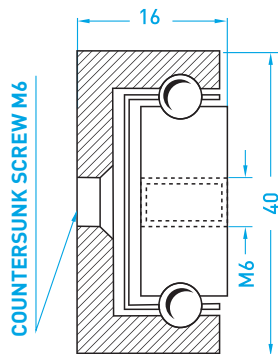
***Load per pair in extended position, even weight distribution and vertical installation.**

*Load per pair in extended position, even weight distribution and vertical installation.

NOTE



OPTIONAL WITH EXTRACT IN BOTH DIRECTIONS



The MX-CP 40 - partially extending rails offers a very high load capacity. Depending on the length, it is fastened by 2 or 3 M6 countersunk screws located in the middle of the U-profile. The inner rail is fastened by 4 or 6 M6 threaded holes.

Extension length = installation length

Overall length = installation length + extension length

CP- Partially extending rails

Type: MX-CP 40

Article no. CP 40

Material versions in:

C45

Aluminum

Stainless steel

Special entitlements:

OVEREXTENDING RAILS / EXTRACT LENGTH = INSTALLATION LENGTH + 50% ABOVE EXTRACT / EXTRACT LENGTH = INSTALLATION LENGTH + 100% WITH FORWARD AND REVERSE WITH CONTINUOUS BORING

MX-CP 40 Drilling pattern table

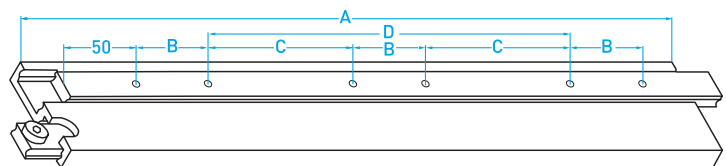
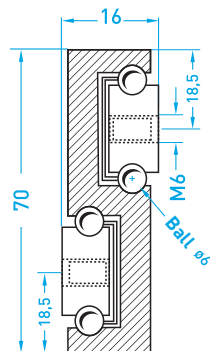
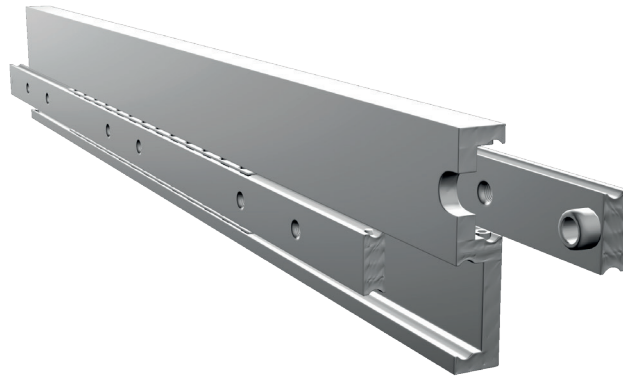
Article No.	Dimension A	Dimension B	Dimension C	Dimension D	Dimension E
CP40.030	300	50	---	100	275
CP40.035	350	50	---	150	325
CP40.040	400	50	---	200	375
CP40.045	450	50	---	250	425
CP40.050	500	50	125	---	475
CP40.055	550	50	150	---	525
CP40.060	600	50	175	---	575
CP40.065	650	50	200	---	625
CP40.070	700	50	225	---	675
CP40.075	750	50	250	---	725
CP40.080	800	50	275	---	775
CP40.085	850	50	300	---	825
CP40.090	900	50	325	---	875
CP40.095	950	50	350	---	925
CP40.100	1000	50	375	---	975
CP40.105	1050	50	400	---	1025
CP40.110	1100	50	425	---	1075
CP40.115	1150	50	450	---	1125
CP40.120	1200	50	475	---	1175

MX-CP 40 load table

Type: MX-CP 40	Article-No.MX -CP 40 ...	
Article No.	Installation length	Load in kg *
CP40.030	300	225
CP40.035	350	220
CP40.040	400	215
CP40.045	450	210
CP40.050	500	200
CP40.055	550	190
CP40.060	600	190
CP40.065	650	185
CP40.070	700	180
CP40.075	750	175
CP40.080	800	175
CP40.085	850	170
CP40.090	900	170
CP40.095	950	165
CP40.100	1000	155
CP40.105	1050	150
CP40.110	1100	145
CP40.115	1150	140
CP40.120	1200	140

*Load per pair in extended position, even weight distribution and vertical installation.

NOTE



The MX-S 70 fully extending rails offers high load capacity in a small footprint. Depending on the length, it is fastened by 4 or 6 M6 tapped holes located in the middle.

Extension length = installation length
Overall length = installation length + extension length

S- full extension
Type: MX-S 70
Article no. S 70

Material versions in:
C45
Aluminum
Stainless steel

Special entitlements:
OVEREXTENDING RAILS / EXTRACT LENGTH = INSTALLATION LENGTH + 50% ABOVE EXTRACT / EXTRACT LENGTH = INSTALLATION LENGTH + 100% WITH FORWARD AND REVERSE WITH CONTINUOUS BORING

MX-S 70 Drilling pattern table

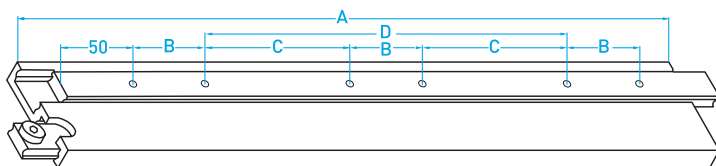
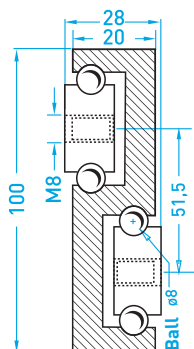
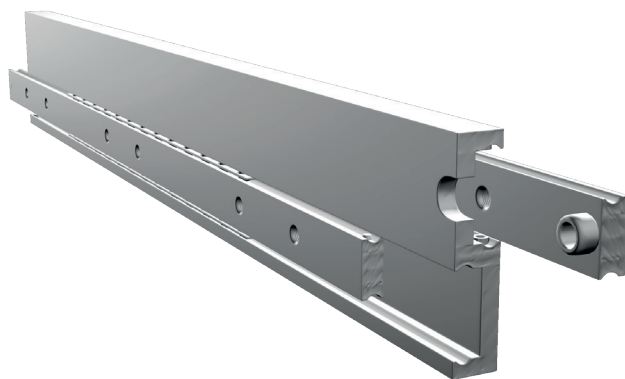
Article No.	Dimension A	Dimension B	Dimension C	Dimension D
S70.030	300	50	---	100
S70.035	350	50	---	150
S70.040	400	50	---	200
S70.045	450	50	---	250
S70.050	500	50	125	---
S70.055	550	50	150	---
S70.060	600	50	175	---
S70.065	650	50	200	---
S70.070	700	50	225	---
S70.075	750	50	250	---
S70.080	800	50	275	---
S70.085	850	50	300	---
S70.090	900	50	325	---
S70.095	950	50	350	---
S70.100	1000	50	375	---

MX-S 70 load table

Type: MX -S 70	Article-No.MX -S 70 ...	
Article No.	Installation length	Load in kg *
S70.030	300	275
S70.035	350	270
S70.040	400	265
S70.045	450	260
S70.050	500	255
S70.055	550	240
S70.060	600	235
S70.065	650	230
S70.070	700	225
S70.075	750	220
S70.080	800	210
S70.085	850	195
S70.090	900	185
S70.095	950	170
S70.100	1000	160

***Load per pair in extended position, even weight distribution and vertical installation.**

NOTE



The MX-S100 fully extending rails offers very high load capacity.
Depending on the length, it is fastened by 8 or 12 M8 threaded holes.

Overall length = installation length + extension length

S- full extension

Type: MX-S 100

Article no. S 100

Material versions in:

C45

Aluminum

Stainless steel

Special entitlements:

**OVEREXTENDING RAILS / EXTRACT LENGTH =
INSTALLATION LENGTH + 50% ABOVE EXTRACT /
EXTRACT LENGTH = INSTALLATION LENGTH +
100% WITH FORWARD AND REVERSE WITH
FORWARD AND REVERSE WITH CONTINUOUS
BORING**

MX-S 100 Drilling pattern table

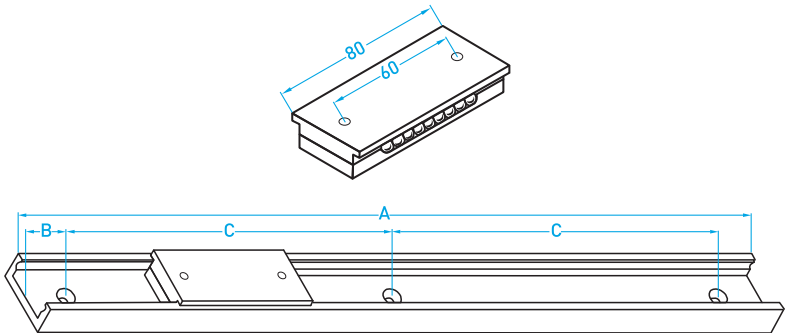
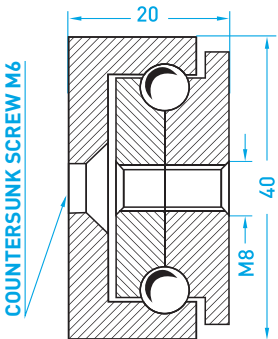
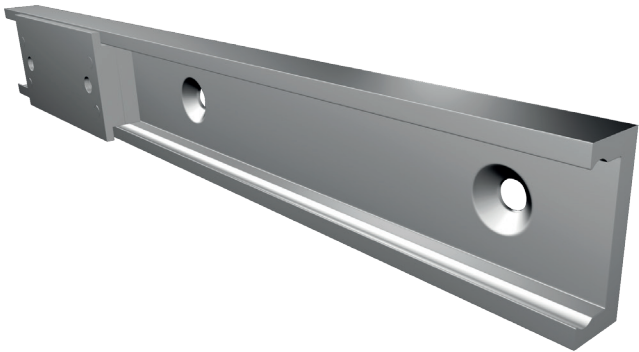
Article No.	Dimension A	Dimension B	Dimension C	Dimension D
S100.080	800	50	275	---
S100.085	850	50	300	---
S100.090	900	50	325	---
S100.095	950	50	350	---
S100.100	1000	50	375	---
S100.105	1050	50	400	---
S100.110	1100	50	425	---
S100.115	1150	50	450	---
S100.120	1200	50	475	---
S100.125	1250	50	500	---
S100.130	1300	50	525	---
S100.135	1350	50	550	---
S100.140	1400	50	575	---
S100.145	1450	50	600	---
S100.150	1500	50	625	---
S100.155	1550	50	650	---
S100.160	1600	50	675	---
S100.165	1650	50	700	---
S100.170	1700	100	650	---
S100.175	1750	100	675	---
S100.180	1800	100	700	---
S100.185	1850	100	725	---
S100.190	1900	100	750	---
S100.195	1950	100	775	---
S100.200	2000	100	800	---

MX-S 100 load table

Type: MX-S 100	Article-No.MX -S 100 ...
Article No.	Installation length
S100.080	800
S100.085	850
S100.090	900
S100.095	950
S100.100	1000
S100.105	1050
S100.110	1100
S100.115	1150
S100.120	1200
S100.125	1250
S100.130	1300
S100.135	1350
S100.140	1400
S100.145	1450
S100.150	1500
S100.155	1550
S100.160	1600
S100.165	1650
S100.170	1700
S100.175	1750
S100.180	1800
S100.185	1850
S100.190	1900
S100.195	1950
S100.200	2000

***Load per pair in extended position, even weight distribution and vertical installation.**

NOTE



The guide is variable from 300mm to max. 3000mm

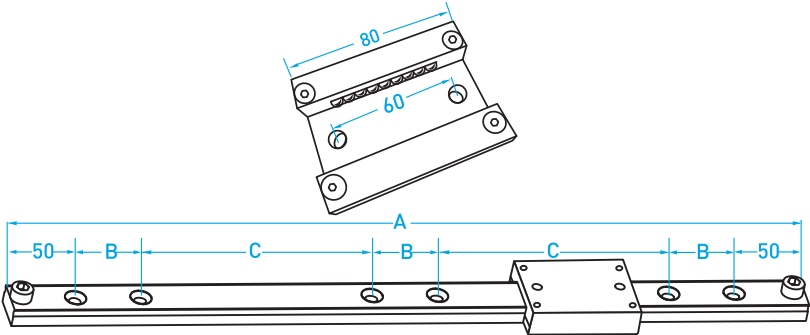
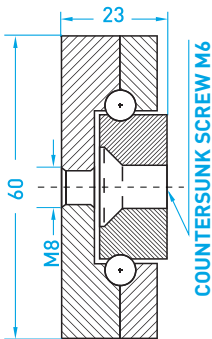
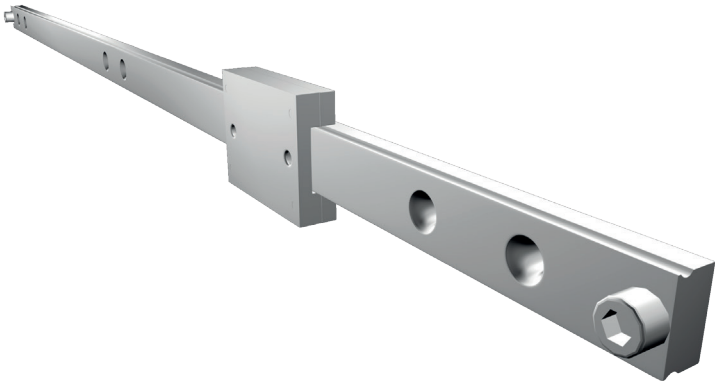
The MX-ST 40 slides is used to carry items in a designated guide. Depending on the length and weight, it is fastened using M6 countersunk holes.

The slides is attached to the pallet or to the object to be conveyed by means of two central M8 tapped holes.

S-carriage
Type: MX-ST 40
Article no. ST 40

MX-ST 40 Drilling pattern table				MX-ST 40 load table		
Article No.	Dime nsion A	Dime nsion B	Dime nsion C	Type: MX-ST 40 Article No.	Article-No.MX -CT 40 ... Installation length	Load in kg *
ST40.030	300	25	---	ST40.030	300	230
ST40....	...	25	---	ST40.035	...	230
ST40.300	bis 3000	25	---	ST40.300	3000	230
				*Load per pair in extended position, even weight distribution and vertical installation.		

NOTE



The guide is variable from 300mm to max. 3000mm

The MX-ST 60 slides is used to carry items in a designated guide. Depending on the length and weight, the attachment is made by M8 countersunk holes.

The carriage is driven by two central M8 tapped holes on the pallet or conveyor Object attached.

S-carriage
Type: MX-ST 60
Article no. MX-ST 60 ...

MX-ST 60 Drilling pattern table				MX-ST 60 load table		
Article No.	Dime nsion A	Dime nsion B	Dime nsion C	Type:MX-ST60 Article No.	Article-No.MX -ST 60 ... Installation length	Load in kg *
ST60.030	300	50	---	ST60.030	300	230
ST60....	...	50	---	ST60.035	...	230
ST60.300	bis 3000	50	---	ST60.300	3000	230
				*Load per pair in extended position, even weight distribution and vertical installation.		

NOTE



MONTAGE

GUT

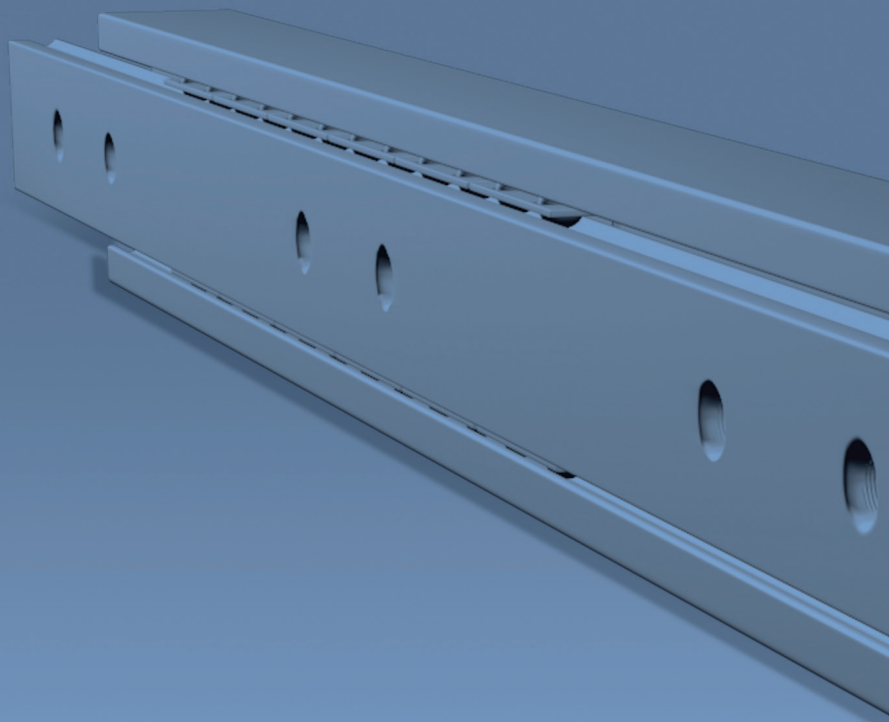
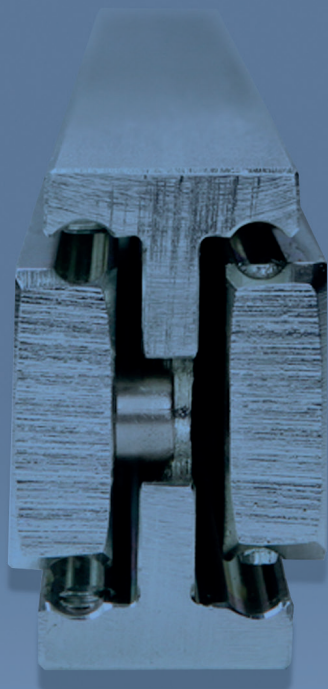


AKZEPTABEL



NICHT ZU EMPFEHLEN





	Miluxor Schienen GmbH Deutschland		Kruppstr. 10, 36041 Fulda	
+49 (0)661 – 9 62 78 28			+49 (0)661 – 9 62 78 29	
	info@miluxor-schienen.de		www.miluxor-schienen.de	