

G-GIS005

Technical specifications

GRIP

Operating mode:

The internal grippers dip into drillings, enlarge their external diameter by expansion of the silicone membrane, under pressure, and thus frictionally engaged hold to the bore wall. When pressure is switched off, the silicone membrane self-reliant retracts into the grippers inside due to its elastic behavior.

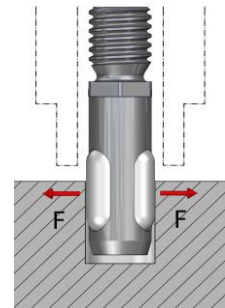
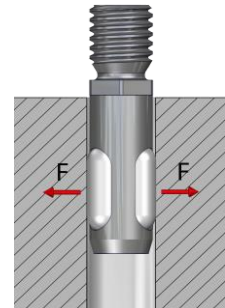
Advantages:

Minimum installation size possible
Width across flats for assembly
Minimum immersion depth
Low gripper weight
Simple gripper principle
Cost-efficient
Quick membrane replacement possible
Indirect request via pressure switch in the supply line possible



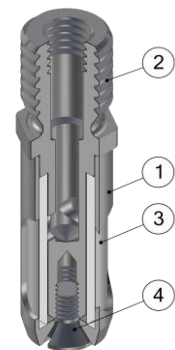
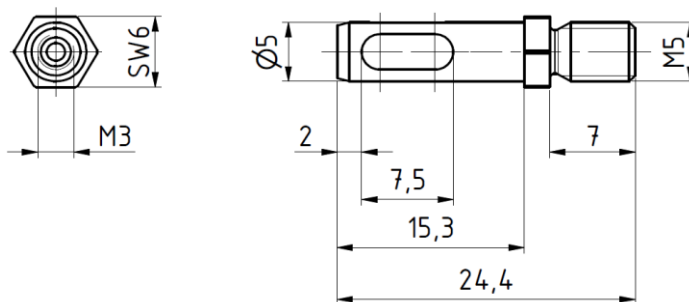
Technical specifications

| | GIS005 |
|---|------------------|
| Working pressure [bar] | 3 - 6 |
| Grip force at 6 bar [N] | 4 |
| For bore diameter [mm] | 5,1 – 6,0 |
| Allowed component weight [kg] | 0,4 |
| Gripper weight [kg] | 0.003 |
| Compressed air connection Ø | M3 |
| Assembly Ø | M5 |
| Stroke cycles at ideal application conditions | 500.000 |
| Membrane material | Silicone rubber |
| Temperature range | -40° C to 300° C |



Limits of the application range

| | |
|---|---------------|
| Minimum immersion depth of the membrane [%] | 60 |
| To protect the membrane from damage at low installation depth, use customers hull | DH = DGIS+10% |
| Reduced grip force, when the membrane is not completely covered | |



Internal gripper lowering Ø005...

| | |
|----------|--------------------------------------|
| G-GIS005 | External diameter 5, screw thread M5 |
|----------|--------------------------------------|

Replacement tube

| | |
|------------|--|
| EG-GI005-S | for internal gripper counter bore GIS005 |
|------------|--|

| Pos. | Description |
|------|--------------------|
| 1 | Hull |
| 2 | Arbor |
| 3 | Tube |
| 4 | Counter sunk screw |

G-GIS006

Technical specifications

GRIP

Operating mode:

The internal grippers dip into drillings, enlarge their external diameter by expansion of the silicone membrane, under pressure, and thus frictionally engaged hold to the bore wall. When pressure is switched off, the silicone membrane self-reliant retracts into the grippers inside due to its elastic behavior.

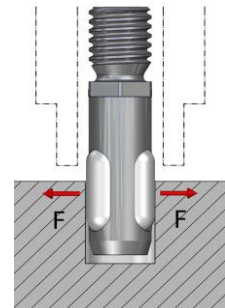
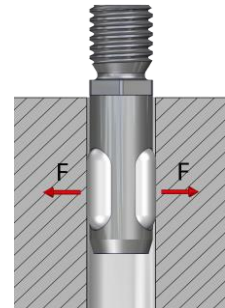
Advantages:

Minimum installation size possible
Width across flats for assembly
Minimum immersion depth
Low gripper weight
Simple gripper principle
Cost-efficient
Quick membrane replacement possible
Indirect request via pressure switch in the supply line possible



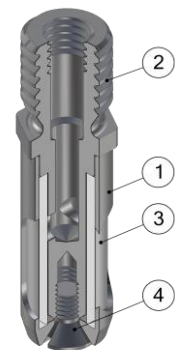
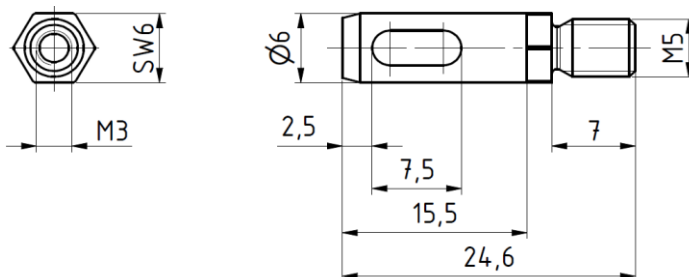
Technical specifications

| | GIS006 |
|---|------------------|
| Working pressure [bar] | 3 - 6 |
| Grip force at 6 bar [N] | 5 |
| For bore diameter [mm] | 6,1 – 7,0 |
| Allowed component weight [kg] | 0,5 |
| Gripper weight [kg] | 0.003 |
| Compressed air connection Ø | M3 |
| Assembly Ø | M5 |
| Stroke cycles at ideal application conditions | 500.000 |
| Membrane material | Silicone rubber |
| Temperature range | -40° C to 300° C |



Limits of the application range

| | |
|---|---------------|
| Minimum immersion depth of the membrane [%] | 60 |
| To protect the membrane from damage at low installation depth, use customers hull | DH = DGIS+10% |
| Reduced grip force, when the membrane is not completely covered | |



Internal gripper lowering Ø006...

| | |
|----------|--------------------------------------|
| G-GIS006 | External diameter 6, screw thread M5 |
|----------|--------------------------------------|

Replacement tube

| | |
|------------|--|
| EG-GI006-S | for internal gripper counter bore GIS006 |
|------------|--|

| Pos. | Description |
|------|--------------------|
| 1 | Hull |
| 2 | Arbor |
| 3 | Tube |
| 4 | Counter sunk screw |

G-GIS007

Technical specifications

GRIP

Operating mode:

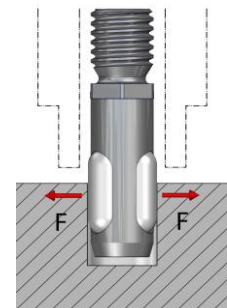
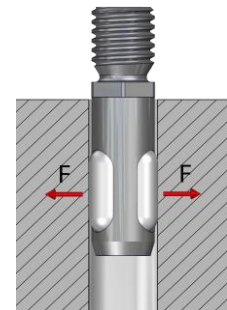
The internal grippers dip into drillings, enlarge their external diameter by expansion of the silicone membrane, under pressure, and thus frictionally engaged hold to the bore wall. When pressure is switched off, the silicone membrane self-reliant retracts into the grippers inside due to its elastic behavior.

Advantages:

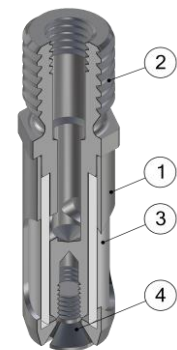
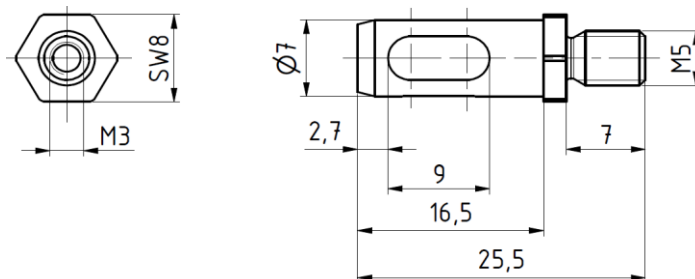
Minimum installation size possible
Width across flats for assembly
Minimum immersion depth
Low gripper weight
Simple gripper principle
Cost-efficient
Quick membrane replacement possible
Indirect request via pressure switch in the supply line possible



| Technical specifications | GIS007 |
|---|------------------|
| Working pressure [bar] | 3 - 6 |
| Grip force at 6 bar [N] | 7 |
| For bore diameter [mm] | 7,1 – 8,0 |
| Allowed component weight [kg] | 0,7 |
| Gripper weight [kg] | 0.005 |
| Compressed air connection Ø | M3 |
| Assembly Ø | M5 |
| Stroke cycles at ideal application conditions | 500.000 |
| Membrane material | Silicone rubber |
| Temperature range | -40° C to 300° C |



| Limits of the application range | |
|---|---------------|
| Minimum immersion depth of the membrane [%] | 60 |
| To protect the membrane from damage at low installation depth, use customers hull | DH = DGIS+10% |
| Reduced grip force, when the membrane is not completely covered | |



| Internal gripper lowering Ø007... | |
|-----------------------------------|--|
| G-GIS007 | External diameter 7, screw thread M5 |
| Replacement tube | |
| EG-GI007-S | for internal gripper counter bore GIS007 |

| Pos. | Description |
|------|--------------------|
| 1 | Hull |
| 2 | Arbor |
| 3 | Tube |
| 4 | Counter sunk screw |

G-GIS008

Technical specifications

GRIP

Operating mode:

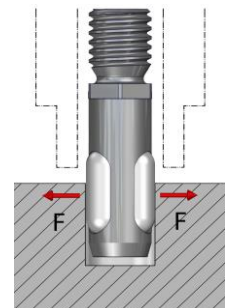
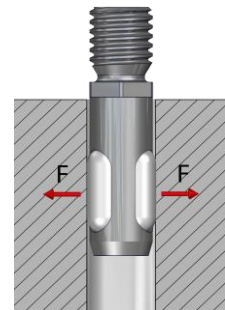
The internal grippers dip into drillings, enlarge their external diameter by expansion of the silicone membrane, under pressure, and thus frictionally engaged hold to the bore wall. When pressure is switched off, the silicone membrane self-reliant retracts into the grippers inside due to its elastic behavior.

Advantages:

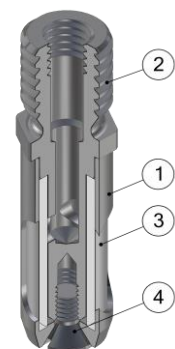
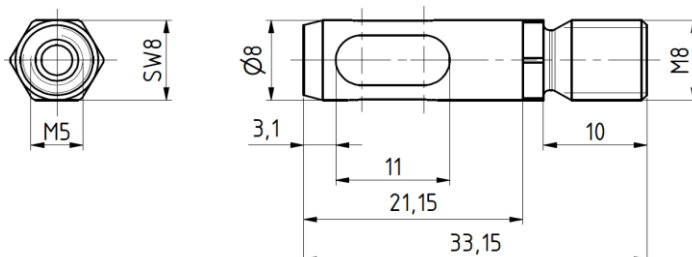
Minimum installation size possible
Width across flats for assembly
Minimum immersion depth
Low gripper weight
Simple gripper principle
Cost-efficient
Quick membrane replacement possible
Indirect request via pressure switch in the supply line possible



| Technical specifications | GIS008 |
|---|------------------|
| Working pressure [bar] | 3 - 6 |
| Grip force at 6 bar [N] | 17 |
| For bore diameter [mm] | 8,1 – 9,0 |
| Allowed component weight [kg] | 1,7 |
| Gripper weight [kg] | 0.008 |
| Compressed air connection Ø | M5 |
| Assembly Ø | M8 |
| Stroke cycles at ideal application conditions | 500.000 |
| Membrane material | Silicone rubber |
| Temperature range | -40° C to 300° C |



| Limits of the application range | |
|---|---------------|
| Minimum immersion depth of the membrane [%] | 60 |
| To protect the membrane from damage at low installation depth, use customers hull | DH = DGIS+10% |
| Reduced grip force, when the membrane is not completely covered | |



Internal gripper lowering Ø008...

G-GIS008 External diameter 8, screw thread M8

Replacement tube

EG-GI008-S for internal gripper counter bore GIS008

| Pos. | Description |
|------|--------------------|
| 1 | Hull |
| 2 | Arbor |
| 3 | Tube |
| 4 | Counter sunk screw |