

G-GIS013

Technical specifications

GRIP

Operating mode:

The internal grippers dip into drillings, enlarge their external diameter by expansion of the silicone membrane, under pressure, and thus frictionally engaged hold to the bore wall. When pressure is switched off, the silicone membrane self-reliant retracts into the grippers inside due to its elastic behavior.

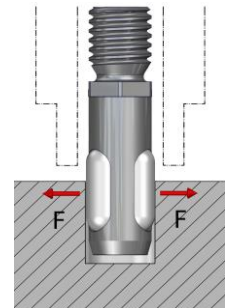
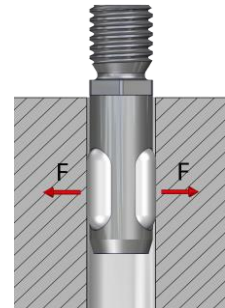
Advantages:

- Minimum installation size possible
- Width across flats for assembly
- Minimum immersion depth
- Low gripper weight
- Simple gripper principle
- Cost-efficient
- Quick membrane replacement possible
- Indirect request via pressure switch in the supply line possible



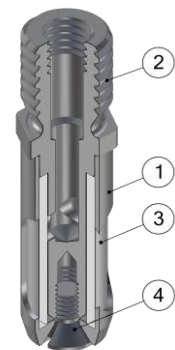
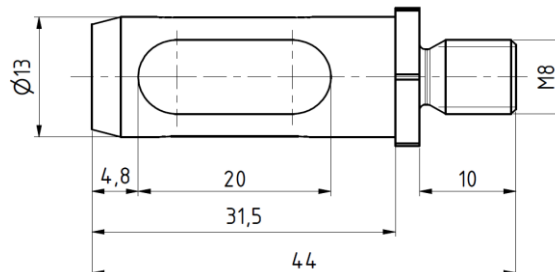
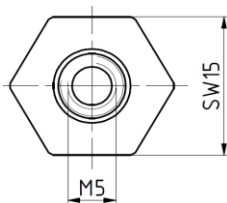
Technical specifications

	GIS013
Working pressure [bar]	3 - 6
Grip force at 6 bar [N]	40
For bore diameter [mm]	13,1 – 14,5
Allowed component weight [kg]	4
Gripper weight [kg]	0.027
Compressed air connection Ø	M5
Assembly Ø	M8
Stroke cycles at ideal application conditions	500.000
Membrane material	Silicone rubber
Temperature range	-40° C to 300° C



Limits of the application range

Minimum immersion depth of the membrane [%]	60
To protect the membrane from damage at low installation depth, use customers hull	DH = D _{GIS} +10%
Reduced grip force, when the membrane is not completely covered	



Internal gripper lowering Ø013...

G-GIS013 External diameter 13, screw thread M8

Replacement tube

EG-GI013-S for internal gripper counter bore GIS013

Pos.	Description
1	Hull
2	Arbor
3	Tube
4	Counter sunk screw

G-GIS013-12KL1

Technical specifications

GRIP

Operating mode:

The internal grippers dip into drillings, enlarge their external diameter by expansion of the silicone membrane, under pressure, and thus frictionally engaged hold to the bore wall. When pressure is switched off, the silicone membrane self-reliant retracts into the grippers inside due to its elastic behavior.

Advantages:

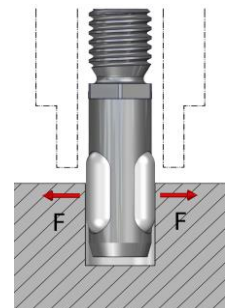
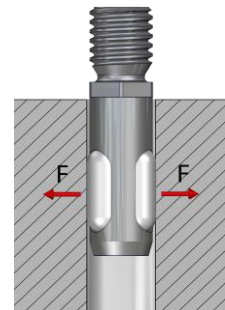
Minimum installation size possible
Width across flats for assembly
Minimum immersion depth
Low gripper weight
Simple gripper principle
Cost-efficient
Quick membrane replacement possible
Indirect request via pressure switch in the supply line possible



Technical specifications

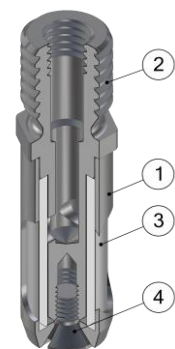
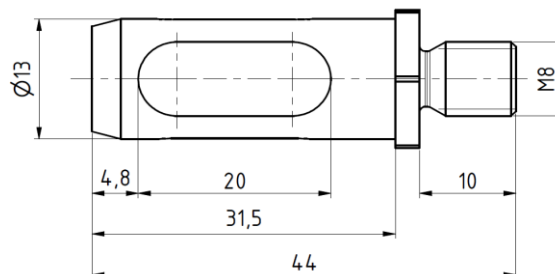
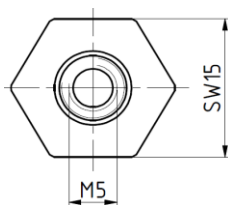
GIS013-12KL1

Working pressure [bar]	3 - 6
Grip force at 6 bar [N]	40
For bore diameter [mm]	13,1 – 14,5
Allowed component weight [kg]	4
Gripper weight [kg]	0.028
Compressed air connection Ø	M5
Assembly Ø	M8
Stroke cycles at ideal application conditions	500.000
Membrane material	Silicone rubber
Temperature range	-40° C to 300° C



Limits of the application range

Minimum immersion depth of the membrane [%]	60
To protect the membrane from damage at low installation depth, use customers hull	DH = DGIS+10%
Reduced grip force, when the membrane is not completely covered	



Internal gripper lowering Ø013...

G-GIS013-12KL1 External diameter 13, screw thread M8, made of 1.4112

Replacement tube

EG-GI013-S for internal gripper counter bore GIS013

Pos.	Description
1	Hull
2	Arbor
3	Tube
4	Counter sunk screw

G-GIS014

Technical specifications

GRIP

Operating mode:

The internal grippers dip into drillings, enlarge their external diameter by expansion of the silicone membrane, under pressure, and thus frictionally engaged hold to the bore wall. When pressure is switched off, the silicone membrane self-reliant retracts into the grippers inside due to its elastic behavior.

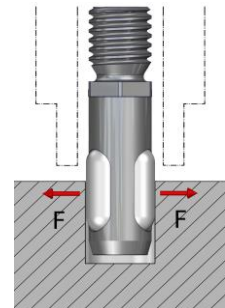
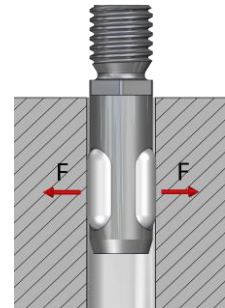
Advantages:

- Minimum installation size possible
- Width across flats for assembly
- Minimum immersion depth
- Low gripper weight
- Simple gripper principle
- Cost-efficient
- Quick membrane replacement possible
- Indirect request via pressure switch in the supply line possible



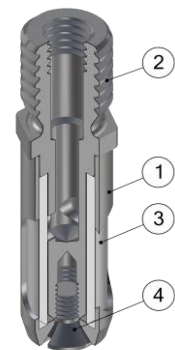
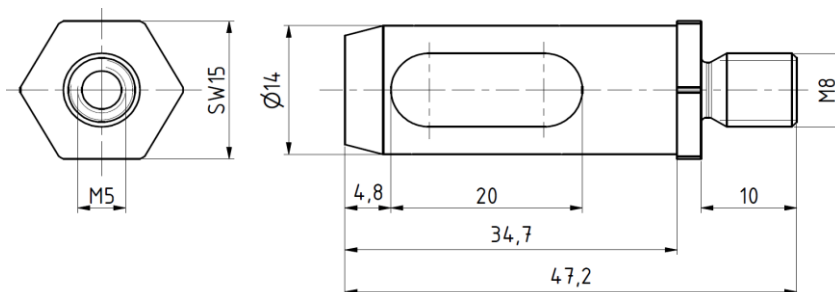
Technical specifications

	GIS014
Working pressure [bar]	3 - 6
Grip force at 6 bar [N]	45
For bore diameter [mm]	14,1 – 15,5
Allowed component weight [kg]	4,5
Gripper weight [kg]	0.034
Compressed air connection Ø	M5
Assembly Ø	M8
Stroke cycles at ideal application conditions	500.000
Membrane material	Silicone rubber
Temperature range	-40° C to 300° C



Limits of the application range

Minimum immersion depth of the membrane [%]	60
To protect the membrane from damage at low installation depth, use customers hull	DH = DGIS+10%
Reduced grip force, when the membrane is not completely covered	



Internal gripper lowering Ø014...

G-GIS014 External diameter 14, screw thread M8

Replacement tube

EG-GI014-S for internal gripper counter bore GIS014

Pos.	Description
1	Hull
2	Arbor
3	Tube
4	Counter sunk screw

G-GIS015

Technical specifications

GRIP

Operating mode:

The internal grippers dip into drillings, enlarge their external diameter by expansion of the silicone membrane, under pressure, and thus frictionally engaged hold to the bore wall. When pressure is switched off, the silicone membrane self-reliant retracts into the grippers inside due to its elastic behavior.

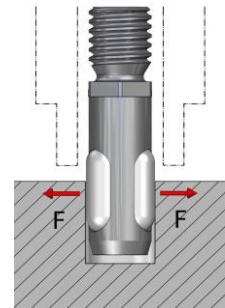
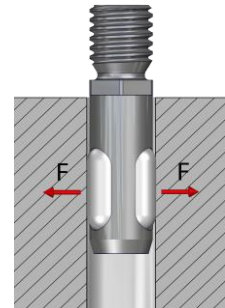
Advantages:

- Minimum installation size possible
- Width across flats for assembly
- Minimum immersion depth
- Low gripper weight
- Simple gripper principle
- Cost-efficient
- Quick membrane replacement possible
- Indirect request via pressure switch in the supply line possible



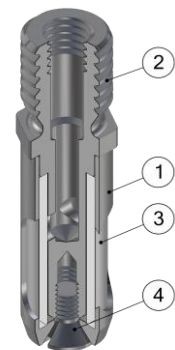
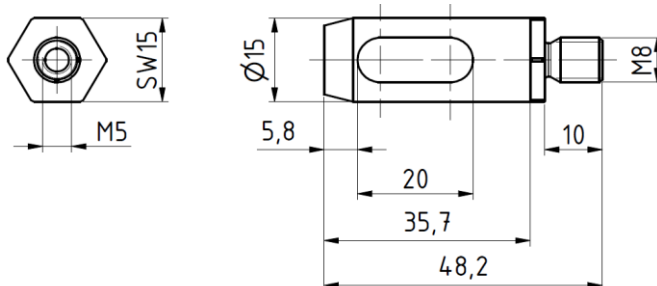
Technical specifications

	GIS015
Working pressure [bar]	3 - 6
Grip force at 6 bar [N]	45
For bore diameter [mm]	15,1 – 16,5
Allowed component weight [kg]	4,5
Gripper weight [kg]	0.04
Compressed air connection Ø	M5
Assembly Ø	M8
Stroke cycles at ideal application conditions	500.000
Membrane material	Silicone rubber
Temperature range	-40° C to 300° C



Limits of the application range

Minimum immersion depth of the membrane [%]	60
To protect the membrane from damage at low installation depth, use customers hull	DH = D _{GIS} +10%
Reduced grip force, when the membrane is not completely covered	



Internal gripper lowering Ø015...

G-GIS015 External diameter 15, screw thread M8

Replacement tube

EG-GI015-S for internal gripper counter bore GIS015

Pos.	Description
1	Hull
2	Arbor
3	Tube
4	Counter sunk screw

G-GIS016

Technical specifications

GRIP

Operating mode:

The internal grippers dip into drillings, enlarge their external diameter by expansion of the silicone membrane, under pressure, and thus frictionally engaged hold to the bore wall. When pressure is switched off, the silicone membrane self-reliant retracts into the grippers inside due to its elastic behavior.

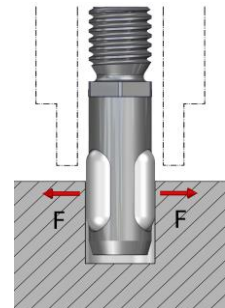
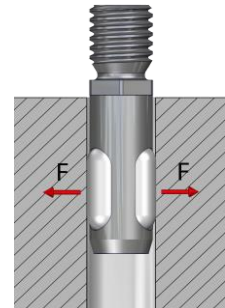
Advantages:

- Minimum installation size possible
- Width across flats for assembly
- Minimum immersion depth
- Low gripper weight
- Simple gripper principle
- Cost-efficient
- Quick membrane replacement possible
- Indirect request via pressure switch in the supply line possible



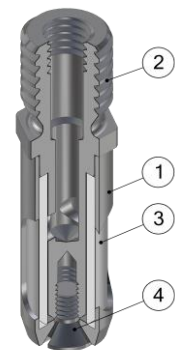
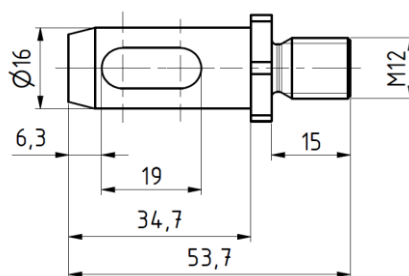
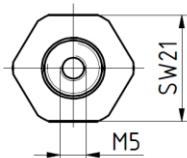
Technical specifications

Technical specifications	GIS016
Working pressure [bar]	3 - 6
Grip force at 6 bar [N]	50
For bore diameter [mm]	16,1 – 17,5
Allowed component weight [kg]	5
Gripper weight [kg]	0.061
Compressed air connection Ø	M5
Assembly Ø	M12
Stroke cycles at ideal application conditions	500.000
Membrane material	Silicone rubber
Temperature range	-40° C to 300° C



Limits of the application range

Minimum immersion depth of the membrane [%]	60
To protect the membrane from damage at low installation depth, use customers hull	DH = DGIS+10%
Reduced grip force, when the membrane is not completely covered	



Internal gripper lowering Ø016...

G-GIS016 External diameter 16, screw thread M12

Replacement tube

EG-GI016-S for internal gripper counter bore GIS016

Pos.	Description
1	Hull
2	Arbor
3	Tube
4	Counter sunk screw