

PRODUCT INFO

Base clamp mountings BG Base are made of drawn round aluminum profiles and have slitted clamping points machined by cutting methods.

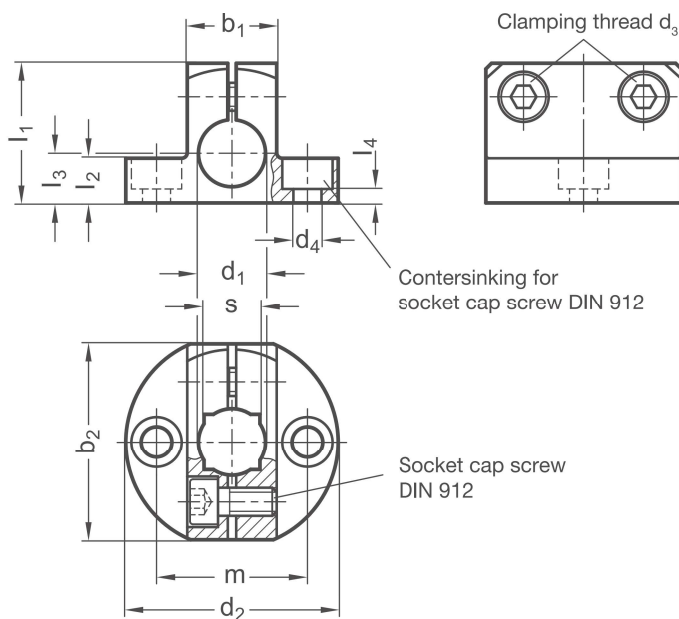
The base with two bores serves as an interface or for fastening the clamp mounting to the place of use.

The bore distance m is the same for all clamp mountings and the available accessories with fastening options to ensure simple replacement and combination.

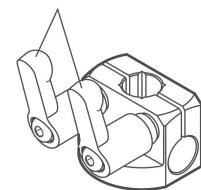
The bores at the clamping points are situated in a plane and arranged in a T-shape, parallel / perpendicular to the fastening plane. They receive rods and tubes with round or square cross-sections via the additionally incorporated square bore.

For clamping, stainless steel socket cap screws DIN 912-A2-70 combine with the clamping thread to reduce the bore cross-section. For regular tool-free clamping, adjustable hand lever sets are available as accessories under the designation HK.

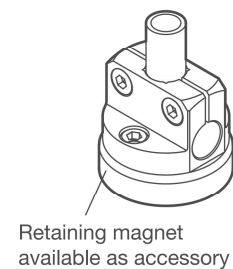
RoHS-compliant product



Adjustable hand lever set HK



Application example



Retaining magnet available as accessory

Clamping point				Clamping thread	Pass-through bore						Square	Accessories
Bore d_1	b_1	b_2	d_2	d_3	d_4 for	l_1	l_2	l_3	l_4	m	s	Hand lever set HK for d_3
B 8	14	29	31,5	M 4	M 4	20	7	7	3	22	-	M 4-14
B 10	16	35	38	M 5	M 5	24	8	8	2,5	27	8	M 5-16
B 12	16	35	38	M 5	M 5	25	8	8	2,5	27	10	M 5-16
B 15	20	41	45	M 6	M 6	30	10	10	4	32	12	M 6-20
B 16	20	41	45	M 6	M 6	31	10	10	4	32	-	M 6-20
B 20	25	44	50	M 6	M 6	35	12,5	12,5	6,5	36	16	M 6-25

Surface	
O	
G	Tumbled, matt
S	Anodized black

ORDER KEY

BG - d_1 - o



ACCESSORIES

- Adjustable hand lever set **HK** see page 172

ON REQUEST

- Clamping point with special diameter
- Screw points with hex head screws
- Surface anodized in colors
- Retaining magnet