

### PRODUCT INFO

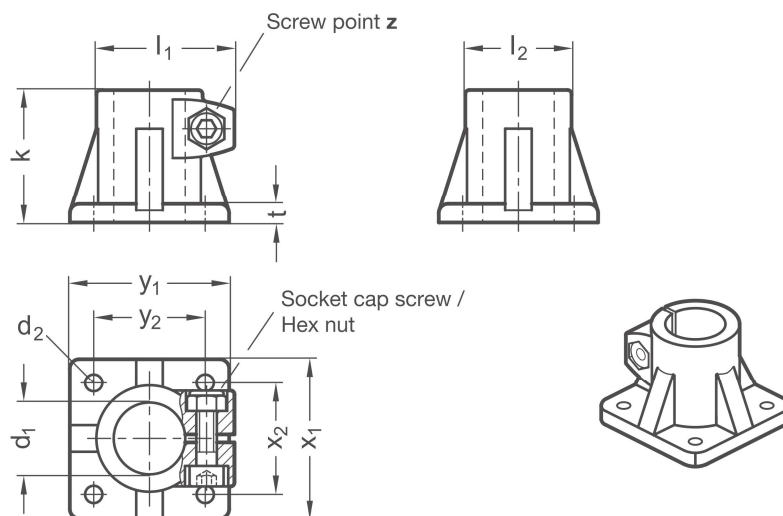
**Base clamps BS** of die-cast aluminum have a slitted clamping point machined by cutting methods.

The base flange with four bores serves as an interface or for fastening the clamp to the place of use.

The bore at the clamping point is arranged perpendicular to the face of the flange. It receives typically available construction tubes with full surface contact over the entire cross-section of the bore.

At the screw point, a hex socket cap screw reduces the bore cross-section for clamping.

**RoHS-compliant product**



Clamping point	Clamping length <b>k</b>	<b>d<sub>2</sub></b>	<b>l<sub>1</sub></b>	<b>l<sub>2</sub></b>	<b>t</b>	<b>x<sub>1</sub></b>	<b>x<sub>2</sub></b>	<b>y<sub>1</sub></b>	<b>y<sub>2</sub></b>	Hex socket cap screw
Bore <b>d<sub>1</sub></b>										
B 20	50	6,5	52	40	7	60	42	60	42	M 8-25
B 25	50	6,5	52	40	7	60	42	60	42	M 8-25
B 30	50	6,5	52	40	7	60	42	60	42	M 8-25
B 30	70	8,5	68	56	10	90	64	90	64	M 10-35
B 32	70	8,5	68	56	10	90	64	90	64	M 10-35
B 35	70	8,5	68	56	10	90	64	90	64	M 10-35
B 40	70	8,5	68	56	10	90	64	90	64	M 10-35
B 40	85	11	77,5	65	14	105	74	105	74	M 10-50
B 42	85	11	77,5	65	14	105	74	105	74	M 10-50
B 45	85	11	77,5	65	14	105	74	105	74	M 10-50
B 48	85	11	77,5	65	14	105	74	105	74	M 10-50
B 50	85	11	77,5	65	14	105	74	105	74	M 10-50
B 60	100	11	92	80	14	125	89	125	89	M 10-50

Screw point **Z**

1	Hex socket cap screw (DIN 912-8.8 and lock nut DIN 985-8, zinc-plated)
2	Hex socket cap screw stainless steel (DIN 912-A2-70 and lock nut DIN 985-A2, glide coating)

Surface **O**

2	textured powder-coated, Black RAL 9005
8	blasted, matt

**ORDER KEY**

**BS - d<sub>1</sub> - k - z - o**



**ACCESSORIES**

– Adjustable hand levers **HSK** see page 168

**ON REQUEST**

- Clamping point with special diameter
- Screw point with hex head screw
- Surface ball-burnished, anodized or powder-coated in other RAL colors

2D  
2C  
2B  
2A  
1D  
1C  
1B  
1A