

PRODUCT INFO

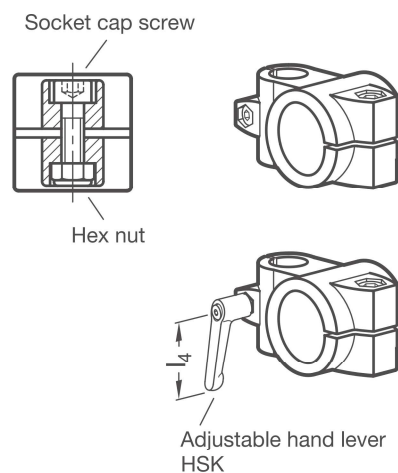
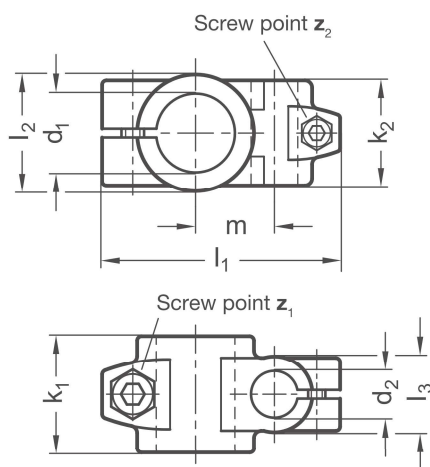
Cross clamps KSU of die-cast aluminum have slitted clamping points with different cross-sections that were machined by cutting methods.

The bores of the clamping points are offset in the plane and arranged at an angle of 90°. They receive typically available construction tubes with full surface contact over the entire cross-section of the bore.

At the screw points, hex socket cap screws or adjustable hand levers reduce the bore cross-section for clamping.

Adjustable hand levers are intended for repeated, tool-free clamping. Under the designation HSK, these are available separately for individual use and in other designs. Compared with the tool-operated hex socket cap screw, the clamping force achievable with an adjustable hand lever is lower due to the shorter lever length.

RoHS-compliant product



Clamping point 1	Clamping point 2						k ₁	k ₂	l ₁	l ₂	l ₃	m	Hex socket cap screw Z ₁	Hex socket cap screw Z ₂	Accessories recom. hand lever	
Bore d ₁	Bore d ₂														for z ₁ l ₄	for z ₂ l ₄
B 20	B 10	B 12	B 14	B 15	B 16	B 18	40	36	81,5	40	26	27	M 8-25	M 6-20	-	63
B 25	B 10	B 12	B 14	B 15	B 16	B 18	40	36	81,5	40	26	27	M 8-25	M 6-20	78	63
B 30	B 10	B 12	B 14	B 15	B 16	B 18	40	36	81,5	40	26	27	M 8-25	M 6-20	78	63
B 40	B 20	B 25	B 30	-	-	-	65	59	122	65	40	45	M 10-50	M 8-25	-	78
B 42	B 20	B 25	B 30	-	-	-	65	59	122	65	40	45	M 10-50	M 8-25	92	78
B 45	B 20	B 25	B 30	-	-	-	65	59	122	65	40	45	M 10-50	M 8-25	92	78
B 48	B 20	B 25	B 30	-	-	-	65	59	122	65	40	45	M 10-50	M 8-25	92	78
B 50	B 20	B 25	B 30	-	-	-	65	59	122	65	40	45	M 10-50	M 8-25	92	78

Screw points

z

1	Hex socket cap screw steel, zinc-plated DIN 912-8.8 and lock nut steel DIN 985-8, zinc-plated
2	Hex socket cap screw stainless steel DIN 912-A2-70 and lock nut stainless steel DIN 985-A2, glide coating

Surface

o

2	textured powder-coated, Black RAL 9005
8	blasted, matt

ORDER KEY

KSU - d₁ - d₂ - z - o

Cross clamp	_____
Clamping point 1	_____
Clamping point 2	_____
Screw points	_____
Surface	_____

ACCESSORIES

– Adjustable hand levers **HSK** see page 168

ON REQUEST

- Clamping points
with different diameters d₁ and d₂ or special diameter
- Screw points
with hex head screws or mixed screw /
adjustable hand lever elements
- Surface
ball-burnished, anodized or powder-coated in
other RAL colors