

### PRODUCT INFO

Base swivel clamp mountings LGF are made of cast aluminum round profiles and have a smooth clamping lug machined by cutting methods.

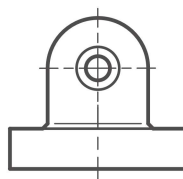
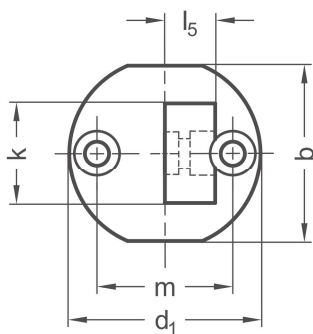
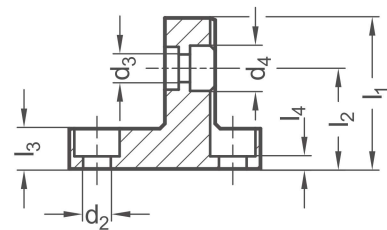
The lug is centered and situated at an angle of 90° to the flange face. The base with two bores serves as an interface or for fastening the clamp mounting to the place of use.

The bore distance  $m$  is the same for all clamp mountings and the available accessories with fastening options to ensure simple replacement and combination.

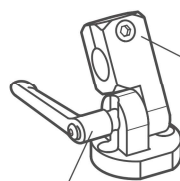
Base swivel clamp mountings LGF can be combined with other swivel clamp mountings with identical  $k$  dimensions to create joint clamp mountings. Clamping kits HM are available, type S with a screw and type K with an adjustable hand lever.

The relevant dimensions for ordering the clamping kits are found in the dimensions table.

**RoHS-compliant product**



Clamping kit  
HM, type S



Joint clamp mounting with  
swivel clamp mounting  
LG

Clamping kit  
HM, type K

k	b	d <sub>1</sub>	Pass-through bore d <sub>2</sub> for	Swivel bore d <sub>3</sub>	d <sub>4</sub>	l <sub>1</sub>	l <sub>2</sub>	l <sub>3</sub>	l <sub>4</sub>	l <sub>5</sub>	m	Accessories
												Clamping kit HM for d <sub>3</sub>
16	29	31,5	M 4	4,5	7,5	25	17	7	3	8	22	M 4-16
20	35	38	M 5	5,5	9	30	20	8	2,5	10	27	M 5-20
25	41	45	M 6	6,5	10,5	37	24,5	10	4	12,5	32	M 6-25
30	44	50	M 6	6,5	10,5	44,5	29,5	12,5	6,5	15	36	M 6-30

Surface	
G	Tumbled, matt
S	Anodized black

**ORDER KEY**

**LGF - k - o**



**ACCESSORIES**

– Adjustable hand lever set **HK** see page 172

**ON REQUEST**

- Surface anodized in colors
- Retaining magnet

2D  
2C  
2B  
2A  
1D  
1C  
1B  
1A