



### PRODUCT INFO

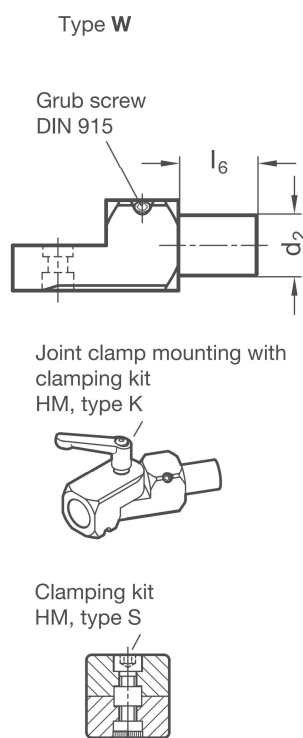
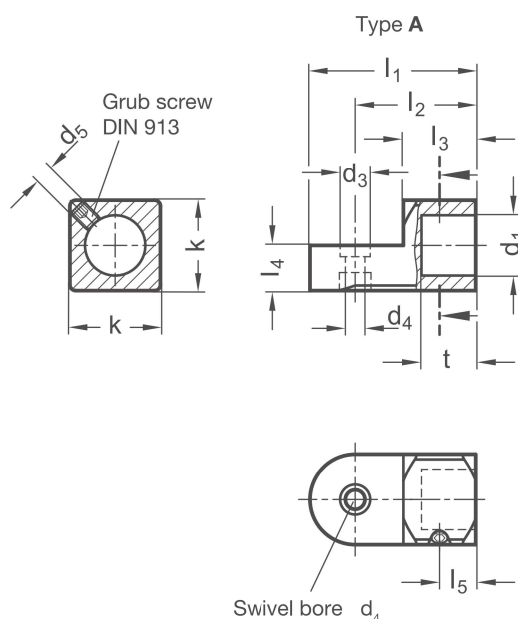
**T-Swivel clamp mountings LGT** are made of drawn aluminum profiles and have a smooth clamping lug machined by cutting methods.

The lug is T-shaped relative to the bolt and to the bore on the opposite side.

T-Swivel clamp mountings LGT can be combined with other swivel clamp mountings with identical  $k$  dimensions to create clamp mountings. Clamping kits HM are available, type S with a screw and type K with an adjustable hand lever.

The relevant dimensions for ordering the clamping kits are found in the dimensions table.

**RoHS-compliant product**



Type A d <sub>1</sub>	Type W d <sub>2</sub>	k	d <sub>3</sub>	Swivel bore d <sub>4</sub>	d <sub>5</sub>	l <sub>1</sub>	l <sub>2</sub>	l <sub>3</sub>	l <sub>4</sub>	l <sub>5</sub>	l <sub>6</sub>	t	Accessories Clamping kit HM for d <sub>4</sub>
B 8	8	16	7	4,5	M 4	30	22	13	8	5,5	16	8	M 4-16
B 10	10	20	8,5	5,5	M 5	38	28	17	10	7	17	10	M 5-20
B 12	12	20	8,5	5,5	M 5	38	28	17	10	8	19	12	M 5-20
B 15	15	25	10	6,5	M 6	46	33,5	20	12,5	10	21	15	M 6-25
B 16	16	25	10	6,5	M 6	46	33,5	20	12,5	11	24	16	M 6-25
B 20	20	30	10	6,5	M 6	55	40	24	15	12	26	18	M 6-30

Type t	
A	With bore
W	With bolt (stainless steel, AISI 303)

Surface o	
G	Tumbled, matt
S	Anodized black

ORDER KEY

LGT - d<sub>1</sub> / d<sub>2</sub> - k - t - o

T-Swivel clamp

Clamping point

Part size

Type

Surface

- ACCESSORIES
- Clamping kit **HM** see page 174
- ON REQUEST
- Surface  
anodized in colors