

### PRODUCT INFO

**Swivel clamps LKF** of die-cast aluminum or precision-cast stainless steel have a smooth fastening lug.

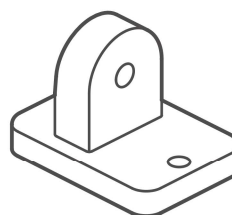
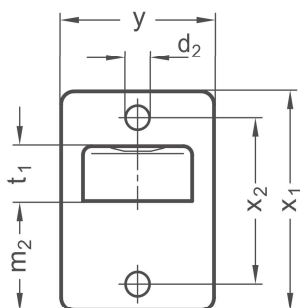
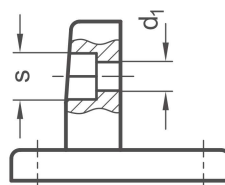
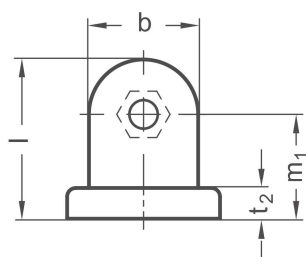
The fastening lug is centered and situated at an angle of 90° to the flange face.

The flange with two bores serves as an interface or for fastening the clamp to the place of use.

The screw point receives a hex head or hex socket cap screw or a lock nut for fastening any additional parts.

By combining swivel clamps with identical screw points, it is possible to assemble any type of joint clamp.

**RoHS-compliant product**



Lug width <b>b</b>	<b>d<sub>1</sub></b>	<b>d<sub>2</sub></b>	<b>l</b>	<b>m<sub>1</sub></b>	<b>m<sub>2</sub></b>	<b>t<sub>1</sub></b>	<b>t<sub>2</sub></b>	<b>s</b>	<b>x<sub>1</sub></b>	<b>x<sub>2</sub></b>	<b>y</b>
25	6,5	5,5	36,5	24	25	12,5	7	10	50	38	35

Surface / material <b>o</b>	
2	Aluminum, textured powder-coated, Black RAL 9005
8	Aluminum, blasted, matt
ED	Stainless steel, blasted, matt

2D

2C

2B

2A

1D

1C

1B

1A

**ORDER KEY**

**LKF - b - o**



**ON REQUEST**

– Surface ball-burnished, anodized or powder-coated in other RAL colors