

PRODUCT INFO

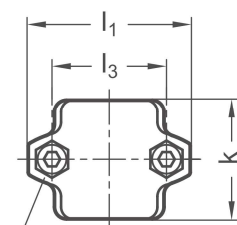
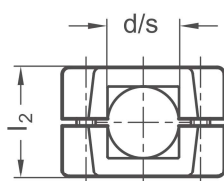
Sleeve clamps MM of die-cast aluminum have a split clamping point with round or square cross-section that has been partially machined by cutting methods.

The bore at the clamping point is arranged in the plane parallel to the outer surfaces of the sleeve halves. It receives typically available construction tubes via multiple ribs in the cross-section of the bore.

At the screw points, hex socket cap screws or adjustable hand levers reduce the bore cross-section for clamping.

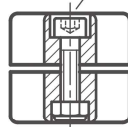
Adjustable hand levers are intended for repeated, tool-free clamping. Under the designation HSK, these are available separately for individual use and in other designs. Compared with the tool-operated hex socket cap screw, the clamping force achievable with an adjustable hand lever is lower due to the shorter lever length.

RoHS-compliant product



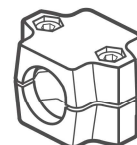
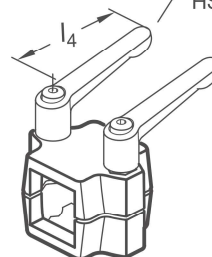
Screw points z

Socket cap screw



Hex nut

Adjustable hand levers HSK



| Clamping point | | | | | | Clamping length k | l₁ | l₂ | l₃ | Hex socket cap screws | Accessories recom. hand lever |
|------------------|------|--------------------|------|------|--|-----------------------------|----------------------|----------------------|----------------------|-----------------------|-------------------------------|
| Bore d | | Square s | | | Klemmhebel HSK lever length l₄ | | | | | | |
| B 20 | B 25 | B 30 | V 20 | V 25 | V 30 | 50 | 68 | 46 | 48 | M 8-35 | 78 |
| B 30 | B 32 | B 35 | V 30 | V 35 | V 40 | 60 | 79 | 59 | 58 | M 8-50 | 78 |
| B 40 | - | - | - | - | - | 60 | 79 | 59 | 58 | M 8-50 | 78 |
| B 40 | B 42 | B 45 | V 40 | V 45 | V 50 | 76 | 98 | 70 | 73 | M 10-60 | 92 |
| B 48 | B 50 | - | - | - | - | 76 | 98 | 70 | 73 | M 10-60 | 92 |

Screw points
z

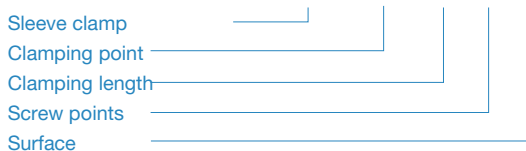
| | |
|---|---|
| 1 | Hex socket cap screw steel, zinc-plated DIN 912-8.8 and lock nut steel DIN 985-8, zinc-plated |
| 2 | Hex socket cap screw stainless steel DIN 912-A2-70 and lock nut stainless steel DIN 985-A2, glide coating |

Surface
o

| | |
|---|--|
| 2 | textured powder-coated, Black RAL 9005 |
| 8 | blasted, matt |

ORDER KEY

MM - d / s - k - z - o



ACCESSORIES

– Adjustable hand levers **HSK** see page 168

ON REQUEST

- Clamping point with special diameter
- Screw points with hex head screws or mixed screw / adjustable hand lever elements
- Surface ball-burnished, anodized or powder-coated in other RAL colors