

PRODUCT INFO

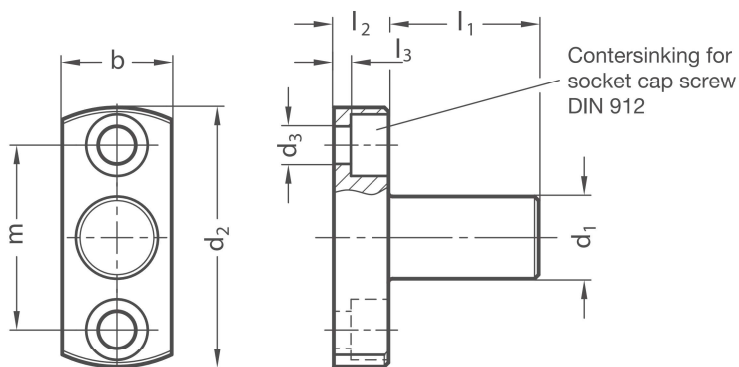
Flanged mounting bolts RKF are turned from round steel profiles and are zinc-plated.

The base with two bores serves as an interface or for fastening the flanged mounting bolt to the place of use.

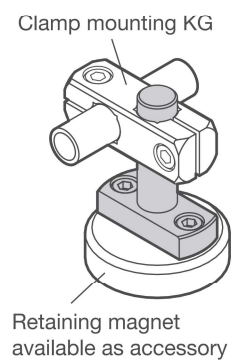
The bore distance m within a nominal size is the same on all clamp mountings with fastening options to ensure easy replacement and combination.

Flanged mounting bolts RKF are suitable alternatives to base clamp mountings BG when especially low assembly heights are required.

RoHS-compliant product



Application example



| d ₁ | l ₁ | | b | d ₂ | Pass-through bore d ₃ for | l ₂ | l ₃ | m |
|----------------|----------------|------|----|----------------|---|----------------|----------------|----|
| 8 | 18 | 32 | 14 | 31,5 | M 4 | 6 | 2 | 22 |
| 10 | 21 | 37 | 16 | 38 | M 5 | 8 | 2,5 | 27 |
| 12 | 22 | 39 | 16 | 38 | M 5 | 8 | 2,5 | 27 |
| 15 | 27,5 | 47,5 | 20 | 45 | M 6 | 10 | 4 | 32 |
| 16 | 28 | 49 | 20 | 45 | M 6 | 10 | 4 | 32 |
| 20 | 35 | 60 | 25 | 50 | M 6 | 10 | 4 | 36 |

2D

2C

2B

2A

1D

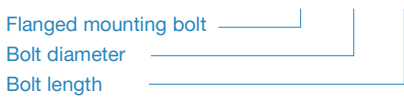
1C

1B

1A

ORDER KEY

RKF - d₁ - l₁



ON REQUEST

– Retaining magnet