

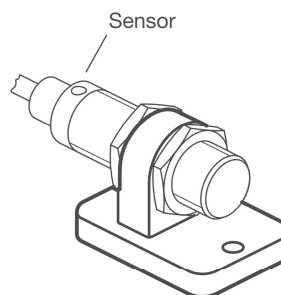
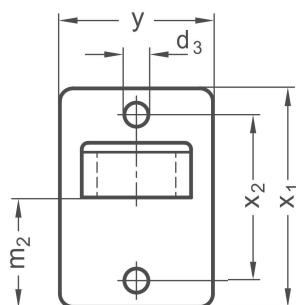
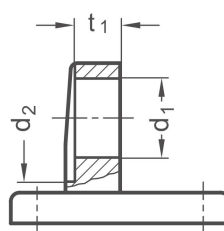
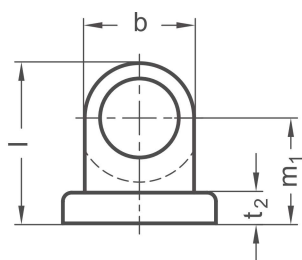
PRODUCT INFO

Sensor mounts SKF of die-cast aluminum have a sensor bore machined by cutting methods.

The sensor bore is centered and parallel to the flange face. It can be used for attaching a sensor with male thread.

The flange with two bores serves as an interface or for fastening the sensor mount to the place of use.

RoHS-compliant product

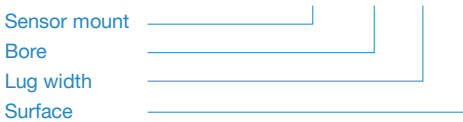


Sensor bore d₁	Lug width b	d₂	d₃	l	m₁	m₂	t₁	t₂	x₁	x₂	y
B12	25	30	5,5	36,5	24	25	11,5	7	50	38	35
B18	25	30	5,5	36,5	24	25	11,5	7	50	38	35

Surface o	
2	Aluminum, textured powder-coated, Black RAL 9005

ORDER KEY

SKF - d₁ - b - o



ON REQUEST

- Stainless steel version
- Surface
ball-burnished, anodized or powder-coated in other RAL colors
- Sensor bore
with special diameter