

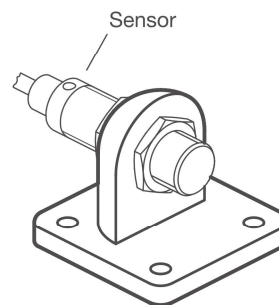
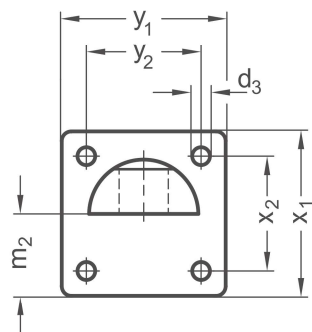
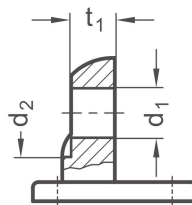
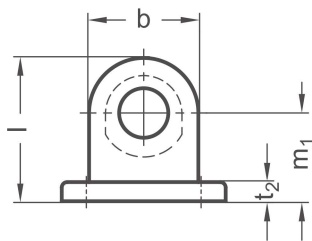
PRODUCT INFO

Sensor mounts SSF of die-cast aluminum have a sensor bore machined by cutting methods.

The sensor bore is centered and parallel to the flange face. It can be used for attaching a sensor with male thread.

The flange with four bores serves as an interface or for fastening the sensor mount to the place of use.

RoHS-compliant product



Sensor bore	Lug width											
d₁	b	d₂	d₃	l	m₁	m₂	t₁	t₂	x₁	x₂	y₁	y₂
B 18	40	50	6,5	52,5	32,5	30	10	7	60	42	60	42
B 30	40	50	6,5	52,5	32,5	30	10	7	60	42	60	42

Surface	
o	
2	textured powder-coated, Black RAL 9005

2D

2C

2B

2A

1D

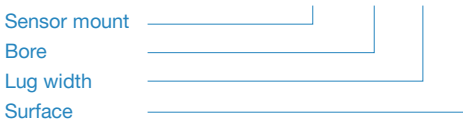
1C

1B

1A

ORDER KEY

SSF - d₁ - b - o



ON REQUEST

- Surface ball-burnished, anodized or powder-coated in other RAL colors
- Sensor bore with special diameter