



PRODUCT INFO

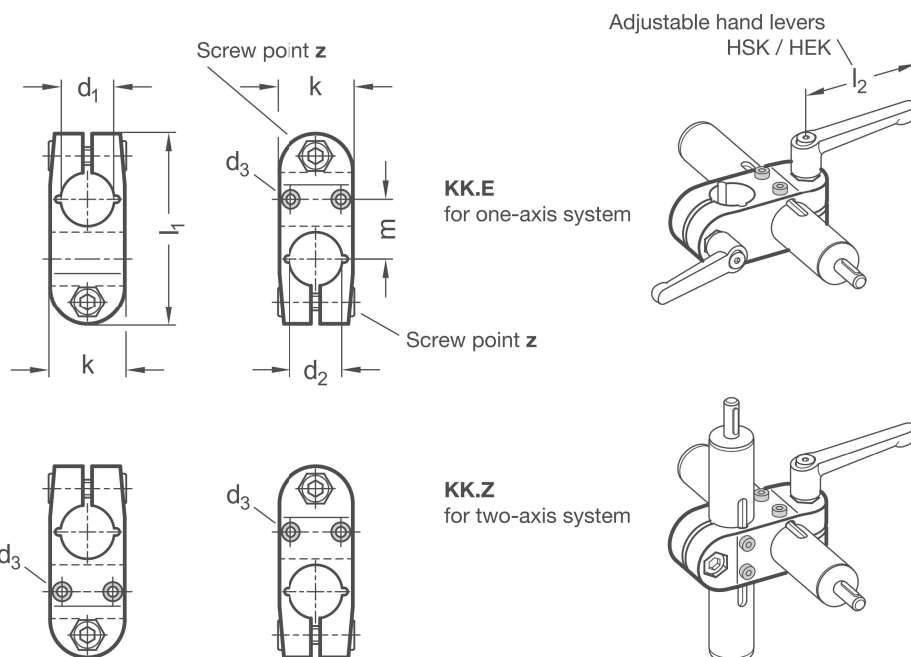
Cross linear unit connectors KK.E and KK.Z of die-cast aluminum or precision-cast stainless steel have slitted clamping points and guide element bores machined by cutting methods, with or without a sliding insert. The bores are offset in the plane and arranged at an angle of 90°.

Together with the guide tube of the linear unit, the guide element bores form a solid linear round guide mechanism that can be adjusted and clamped for low play. Drive keys transmit the linear movement of the linear unit to the linear unit connector.

Depending on the design, the part to be moved is fastened to the guide element or the guide element itself is installed at the place of use such that the entire linear unit moves together. At the screw points, hex socket cap screws or adjustable hand levers reduce the guide element bore or clamping point size.

Adjustable hand levers are intended for repeated, tool-free clamping. Under the designation HSK or HEK, these are available separately for individual use and in other designs. Compared with the tool-operated hex socket cap screw, the clamping force achievable with an adjustable hand lever is lower due to the shorter lever length.

RoHS-compliant product



KK.E for one-axis systems

| Clamping point 1 - 2 | | Mounting screws on the drive key d₃ | Clamping length k | l₁ | m | Hex socket cap screws | Accessories recom. hand lever for z | |
|--|-------------------------------------|--|-----------------------------|----------------------|----------|-----------------------|--|---|
| Bore d₁ - d₂ | Without sliding insert (alum. only) | | | | | | HSK for aluminum clamp lever length l₂ | HEK for stainless steel clamp lever length l₂ |
| B18 - B18 | G18 - B18 | M3 | 25 | 64 | 20 | M 6-20 | 63 | 63 |

KK.Z for two-axis systems

| Clamping point 1 - 2 | | Mounting screws on the drive key d₃ | Clamping length k | l₁ | m | Hex socket cap screws | Accessories recom. hand lever for z | |
|--|-------------------------------------|--|-----------------------------|----------------------|----------|-----------------------|--|---|
| Bore d₁ - d₂ | Without sliding insert (alum. only) | | | | | | HSK for aluminum clamp lever length l₂ | HEK for stainless steel clamp lever length l₂ |
| B18 - B18 | G18 - G18 | M3 | 25 | 64 | 20 | M 6-20 | 63 | 63 |

Screw points
z

| | |
|---|---|
| 1 | Hex socket cap screw steel, zinc-plated DIN 912-8.8 and lock nut steel DIN 985-8, zinc-plated (only for aluminum linear unit connector) |
| 2 | Hex socket cap screw stainless steel DIN 912-A2-70 and lock nut stainless steel DIN 985-A2, glide coating |

Surface / material
o

| | |
|----|--|
| 2 | Aluminium textured powder-coated, Black RAL 9005 |
| 8 | Aluminium blasted, matt |
| ED | Stainless steel, blasted, matt |

ACCESSORIES

- Adjustable hand levers **HSK** see page 168
- Stainless steel adjustable hand levers **HEK** see page 170

ON REQUEST

- Surface
ball-burnished, anodized or powder-coated in other RAL colors

One-axis system

ORDER KEY

KK.E - d₁ - d₂ - z - o

Cross linear unit connector _____

Clamping point 1 _____

Clamping point 2 _____

Screw points _____

Surface / material _____

Two-axis system

ORDER KEY

KK.Z - d₁ - d₂ - z - o

Cross linear unit connector _____

Clamping point 1 _____

Clamping point 2 _____

Screw points _____

Surface / material _____