



### PRODUCT INFO

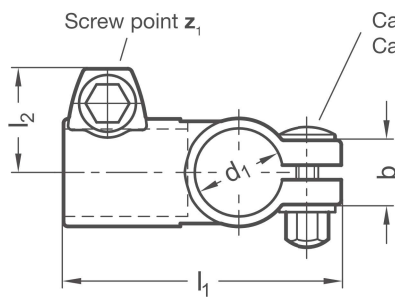
**T-linear unit connectors TE.E** of precision-cast stainless steel have a clamping point and a slitted bore machined by cutting methods and are fitted with a sliding insert. Both bores are situated in a plane and arranged in a T-shape.

Together with the guide tube of the linear unit, the guide element bore forms a solid linear round guide mechanism that can be adjusted and clamped for low play. Drive keys transmit the linear movement of the linear unit to the guide element.

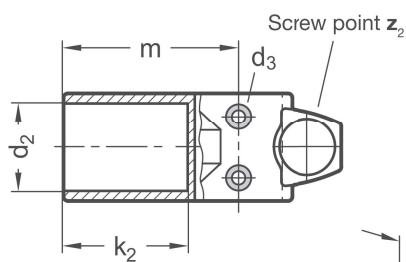
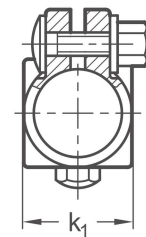
Depending on the design, the part to be moved is fastened to the guide element or the guide element itself is installed at the place of use such that the entire linear unit moves together. At the screw points, carriage bolts together with cap nuts or adjustable hand levers reduce the guide element bore or clamping point size. Type B is equipped with seals at the screw points.

Adjustable hand levers are intended for repeated, tool-free clamping. Under the designation HEK, these are available separately for individual use and in other designs. Compared with the tool-operated hex socket cap screw, the clamping force achievable with an adjustable hand lever is lower due to the shorter lever length.

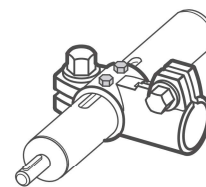
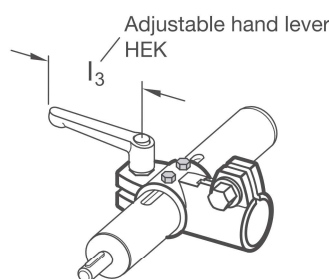
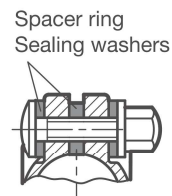
### RoHS-compliant product



Type A  
without seals



Type B  
with seals



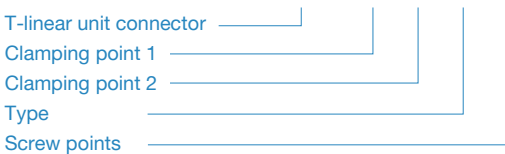
Clamping point 1	Clamping point 2	b	Mounting screws on the drive key d <sub>3</sub>	Clamping length k <sub>1</sub>	k <sub>2</sub>	l <sub>1</sub>	l <sub>2</sub>	m	Cap nut	Accessories recom. hand lever	
Bore d <sub>1</sub> With PTFE sliding insert	Bore d <sub>2</sub> Without sliding insert									HEK for Z <sub>1</sub> l <sub>3</sub>	for Z <sub>2</sub> l <sub>3</sub>
G 30	B 30	22	M 4	37	42	96	35	60	M 8	78	78
G 50	B 50	30	M 6	65	75	151,5	48,5	103	M 10	92	92

Type t	
A	Without seals
B	With seals (sealing washer polyacetal POM, blue, spacer ring silicone 40 ... 60 Shore A, blue)

Screw points z	
4	Cap nut stainless steel DIN 917-A2 and carriage bolt stainless steel DIN 603-A2

**ORDER KEY**

**TE.E - d<sub>1</sub> - d<sub>2</sub> - t - z**



**ACCESSORIES**

– Stainless steel adjustable hand levers **HEK** see page 170