



PRODUCT INFO

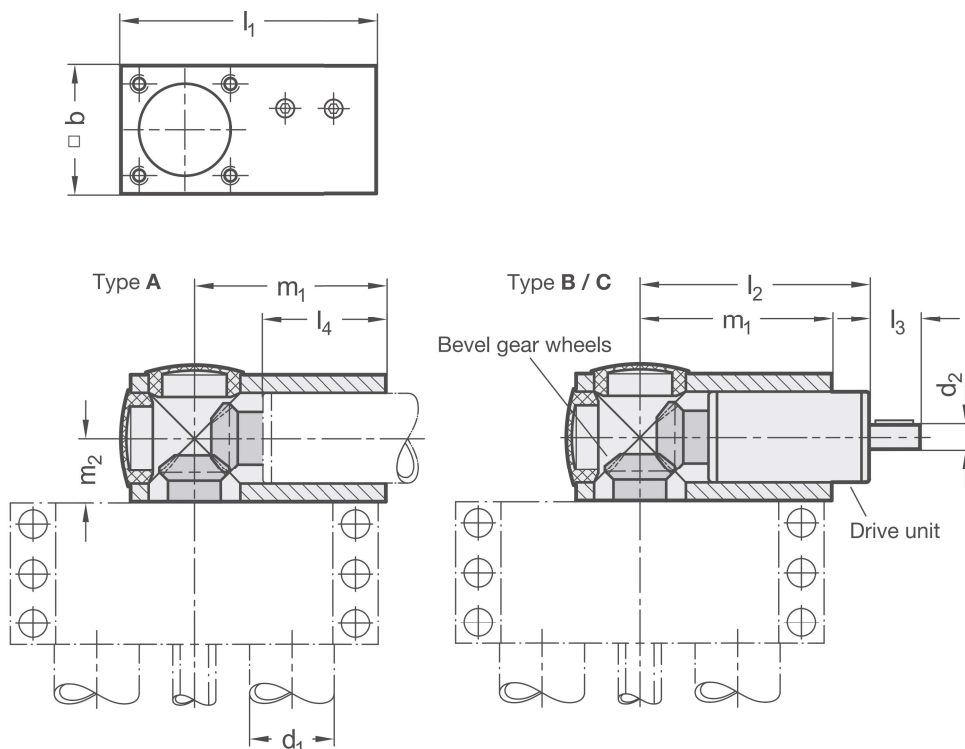
L-angle gears YLD transmit rotational movements between double tube linear units and drive or transfer units. The input and output sides are offset by 90°, and the rotational axes have a common point of intersection.

The angle gear is screwed to the front side of the double tube linear unit end piece using hex socket cap screws, the bevel gear wheels are fixed in place on the shaft journal using parallel keys and grub screws. Removing the plastic caps offers good access, making it easier to adjust the engagement of the bevel gear wheels.

L-angle gears can be ordered with various features for different applications based on the types listed in the table. This makes it possible to combine double tube linear units with different drive or transfer units. The housing is made of milled aluminum, and the bevel gear wheels are made of selectively hardened steel. The drive unit consists of a chrome-plated steel tube, and the tube stoppers are made of plastic.

Note:
The tube stopper must be removed from the journal of the double tube linear unit to install the angle gear.

RoHS-compliant product



Linear unit nominal diameter d₁	b	d₂	l₁	l₂ ≈	l₃	l₄ ≈	m₁	m₂
18	30	6	60	67	16	25	45	15
30	42	8	84	86	16	37	63	21
40	54	12	108	125	17	49	81	27
50	64	12	128	125	18	64	96	32
60	74	14	148	135	19	71	111	37

Type t	
A	Angle gear box + bevel gear wheel set
B	Angle gear box + bevel gear wheel set + drive unit (steel chrome plated)
C	Angle gear box + bevel gear wheel set + drive unit (stainless steel)

Surface o	
2	Textured powder-coated, Black RAL 9005

ORDER KEY

YLD - d₁ - t - o

L-angle gear	
Nominal diameter	
Type	
Surface	

ON REQUEST

– Surface
ball-burnished, anodized or powder-coated in other
RAL colors