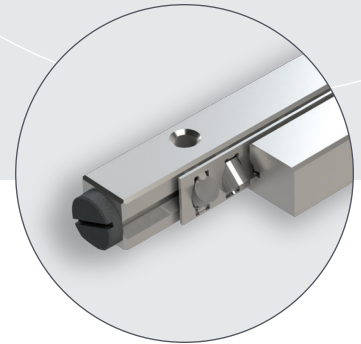
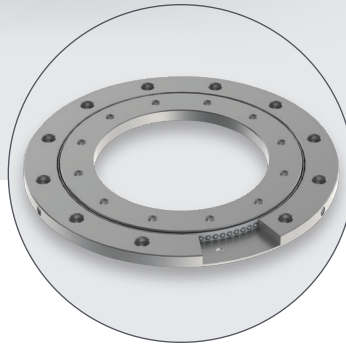
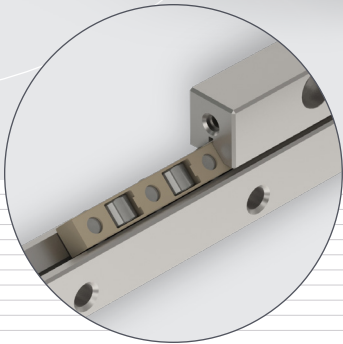
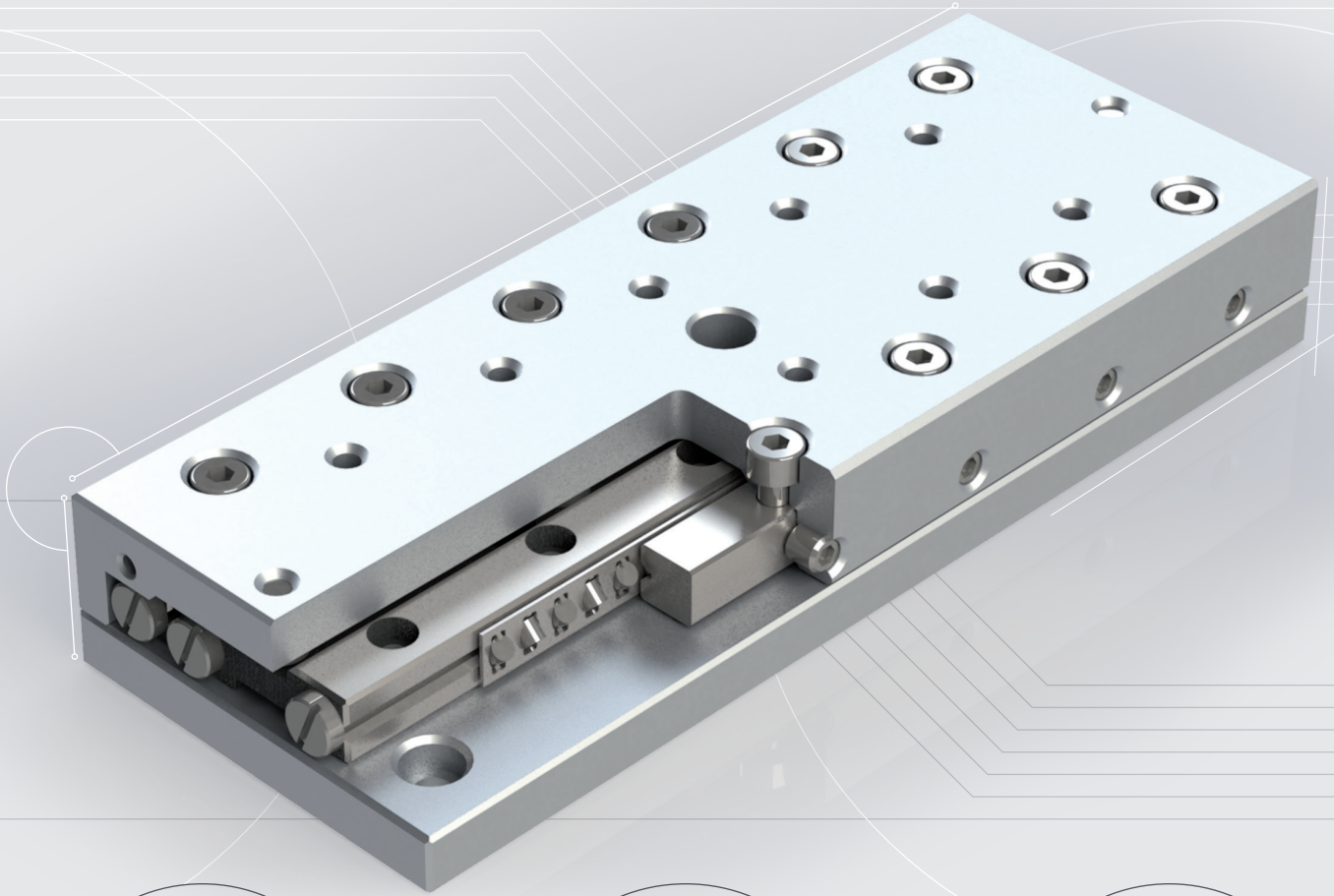


OVER
50
YEARS
of success



Lightweight slides type RTA



TECHNISCHE DATEN

ASSEMBLY

The mounting holes of each type are drilled to a standard configuration in slide-top and -base and permit the user a quick attachment into the application. Thread holes in the table parterre according to ISO-standard. Dimensions in this catalogue are in mm.

Pm linear slides are precision devices and require proper mounting to perform at rated specifications. They have to be mounted on rigid and fine-machined, preferable by fine-milling, flat surfaces and supported over their entire base length. Hereby the characters qualities of PM linear slide will be shown to full advantage

LOADS AND MOMENTS

The slides listed in this catalogue are able to carry loads and moments in any direction. The load ratings are based on the fundamentals established by ISO and DIN for the calculation of roller bearings (ISO standard 281, for miniature slide type PMM DIN 636, part 3).

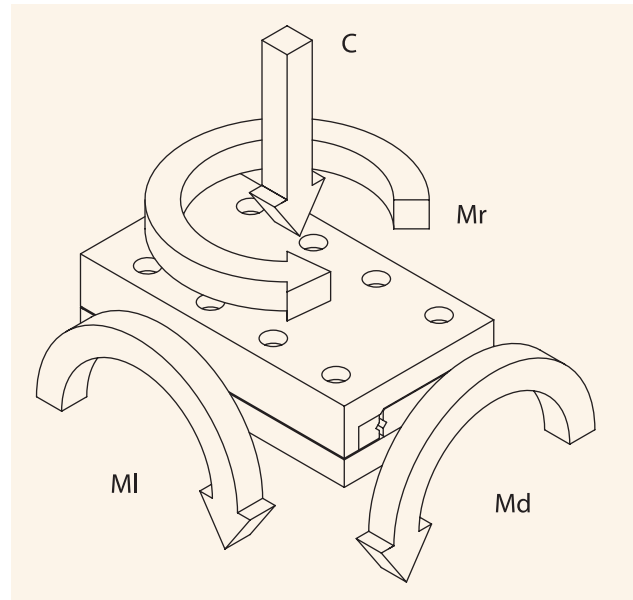
To ensure the high running accuracy and to prevent against play, vibration and overloads have to be avoided. The load capacity C , defined in ISO76-1987, is the maximum downward load or force located in the center of the upper part in horizontal zero-position.

M_I = Pitch moment: when a load is cantilevered (not symmetrically mounted) off the end of an axis, parallel to the direction of travel.

M_d = Roll moment: Wenn a load is cantilevered off the side of an axis, perpendicular to the direction of travel.

M_r = Yaw moment: when a force causes a rotation moment about the center of an axis.

Exceeding of the listed moment ratings may reduce the life of the bearings and can degrade accuracy. Please feel free to contact one of our product specialists for more information.

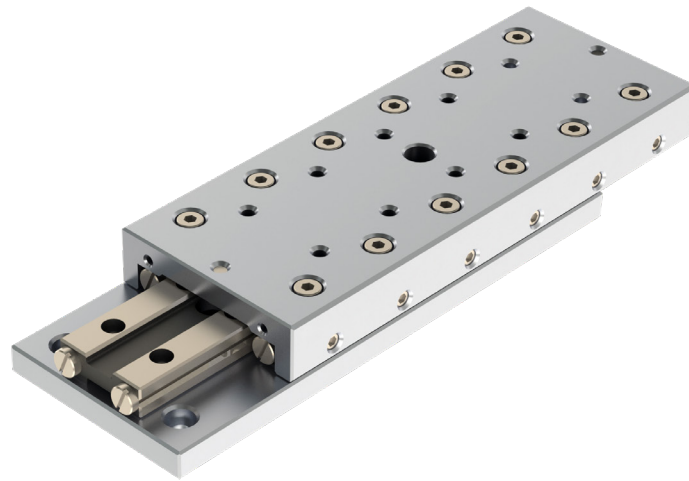


VACUUM AND CLEANROOM COMPATIBLE SLIDES

Most of the PM slides can be prepared for use in (ultra-high) vacuum or cleanroom environments. Special care has to be taken for example with the selection of the low outgassing materials, special lubricants, surface finishings, vented stainless steel fasteners for use in blind tapped holes, special ball- or crossed roller cages and with the selection of switches and wires. For the assembly of the tables we use modern cleanroom cells unto ISO/FDIS 14644-1 class 5 with clean spots class 3.

With over 50 years experience in this field we are ready to meet the most challenging requirements.

For more information please consult PM.



PM frictionless slides type RTNA and RTLA are fine pre-loaded linear motion units, ready for mounting. Mainly made in aluminum, this model offers a wide range of benefits as for example; low weight, no stick-slip effect and easy to mount into the application. These slides are designed to meet the demands of general machine industry upto high-precision equipment.

MATERIAL TABLE BODIES

Aluminum, natural anodize finishing

FEATURES AND SPECIFICATIONS

- Incorporates pre-loaded linear bearings type RSD and double-sided track-rail, including roller cages
On request to provide with ball cages
- Slide-top and -base have equal lengths
- 2 standard stroke lengths (N- and L-stroke)
Linear strokes are limited by internal mounted hard end-stops, two in the slide-top and one or two in the base-plate, depending on RTLA or RTNA version.
RTNA-stroke: for normal stroke/travel, with normal loads.
RTLA-stroke: for longer stroke/travel, with reduced loads.
- For horizontal and vertical installation
- All mounting surfaces are precision ground
one flank of the slide (the side opposite to the adjustment screws) is ground parallel to the linear bearings to serve as a Reference Face
- The slide-top is provided with tapped attachment holes, drilled to a standard configuration. The slide-base is equipped with countersunk-bored holes, which accept socket head screws. Pre-drilled holes offers simple mounting
- Running accuracies are shown on page 128

OPTIONS

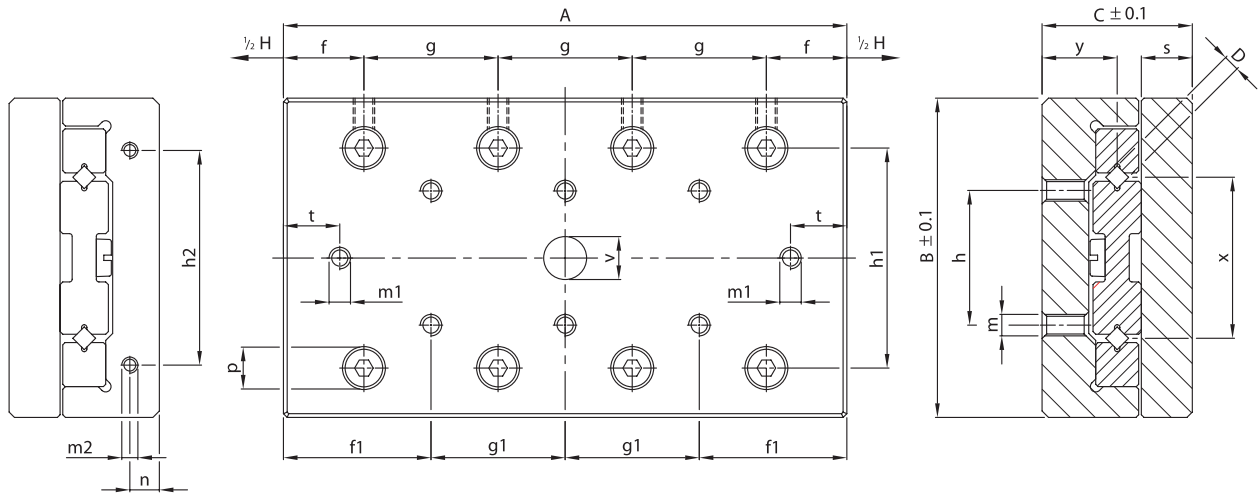
- Selected slides can be supplied with a height tolerance of ± 0.01 mm
- Cages can be replaced by plastic crossed roller type KZR or type KCLK fitted with balls
- Higher accuracy grade slides
- Stainless steel linear bearings, table bodies in aluminum with natural or black anodized finishing, all fastening screws stainless steel
- SF finishing for linear bearings offering smooth and ultra-precise operation
- UHV compatible version

Notes by ordering

When ordering please specify the following:

- Model no. and quantity

Example: 1 piece slide type RTNA-3175.

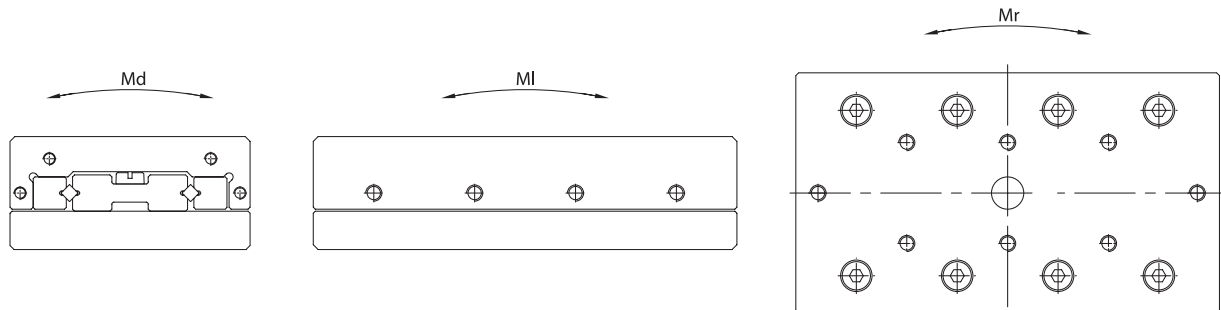


Configuration mounting holes in slide-base: see page 106 and 107

| Type | | | | | Stroke H | | | | | | | | | | | | |
|-----------------|-----|----|----|-----|----------|------|-----|------|-------|-------|----|------|----|------|------|----|--|
| | A | B | C | D | RTNA | RTLA | f | f1 | g | g1 | h | h1 | h2 | m | m1 | m2 | |
| RTA-1520 | 25 | | | | 10 | - | | | 1x10 | - | | | | | | | |
| RTA-1530 | 35 | | | | 15 | 20 | | | 2x10 | 1x10 | | | | | | | |
| RTA-1540 | 45 | | | | 20 | 30 | | | 3x10 | 2x10 | | | | | | | |
| RTA-1550 | 55 | | | | 25 | 40 | | | 4x10 | 3x10 | | | | | | | |
| RTA-1560 | 65 | 30 | 15 | 1.5 | 30 | 50 | 7.5 | 12.5 | 5x10 | 4x10 | 10 | 18.4 | 12 | M2.5 | M2 | M2 | |
| RTA-1570 | 75 | | | | 35 | 60 | | | 6x10 | 5x10 | | | | | | | |
| RTA-1580 | 85 | | | | 40 | 70 | | | 7x10 | 6x10 | | | | | | | |
| RTA-1590 | 95 | | | | 45 | 80 | | | 8x10 | 7x10 | | | | | | | |
| RTA-15100 | 105 | | | | 50 | 90 | | | 9x10 | 8x10 | | | | | | | |
| RTA-2030 | 35 | | | | 15 | - | | | 1x15 | - | | | | | | | |
| RTA-2045 | 50 | | | | 22 | 30 | | | 2x15 | 1x15 | | | | | | | |
| RTA-2060 | 65 | | | | 30 | 45 | | | 3x15 | 2x15 | | | | | | | |
| RTA-2075 | 80 | | | | 37 | 60 | | | 4x15 | 3x15 | | | | | | | |
| RTA-2090 | 95 | 40 | 21 | 2 | 45 | 75 | 10 | 17.5 | 5x15 | 4x15 | 15 | 25 | 16 | M3 | M2.5 | M2 | |
| RTA-2105 | 110 | | | | 52 | 90 | | | 6x15 | 5x15 | | | | | | | |
| RTA-2120 | 125 | | | | 60 | 105 | | | 7x15 | 6x15 | | | | | | | |
| RTA-2135 | 140 | | | | 67 | 120 | | | 8x15 | 7x15 | | | | | | | |
| RTA-2150 | 155 | | | | 75 | 135 | | | 9x15 | 8x15 | | | | | | | |
| RTA-3050 | 55 | | | | - | 30 | | | 1x25 | - | | | | | | | |
| RTA-3075 | 80 | | | | 37 | 55 | | | 2x25 | 1x25 | | | | | | | |
| RTA-3100 | 105 | | | | 50 | 80 | | | 3x25 | 2x25 | | | | | | | |
| RTA-3125 | 130 | | | | 62 | 105 | | | 4x25 | 3x25 | | | | | | | |
| RTA-3150 | 155 | | | | 75 | 130 | | | 5x25 | 4x25 | | | | | | | |
| RTA-3175 | 180 | 60 | 25 | 3 | 87 | 155 | 15 | 27.5 | 6x25 | 5x25 | 25 | 41 | 40 | M4 | M4 | M3 | |
| RTA-3200 | 205 | | | | 100 | 180 | | | 7x25 | 6x25 | | | | | | | |
| RTA-3250 | 255 | | | | 125 | 230 | | | 9x25 | 8x25 | | | | | | | |
| RTA-3300 | 305 | | | | 150 | 280 | | | 11x25 | 10x25 | | | | | | | |
| RTA-3350 | 355 | | | | 175 | 330 | | | 13x25 | 12x25 | | | | | | | |
| RTA-3400 | 405 | | | | 200 | 380 | | | 15x25 | 14x25 | | | | | | | |

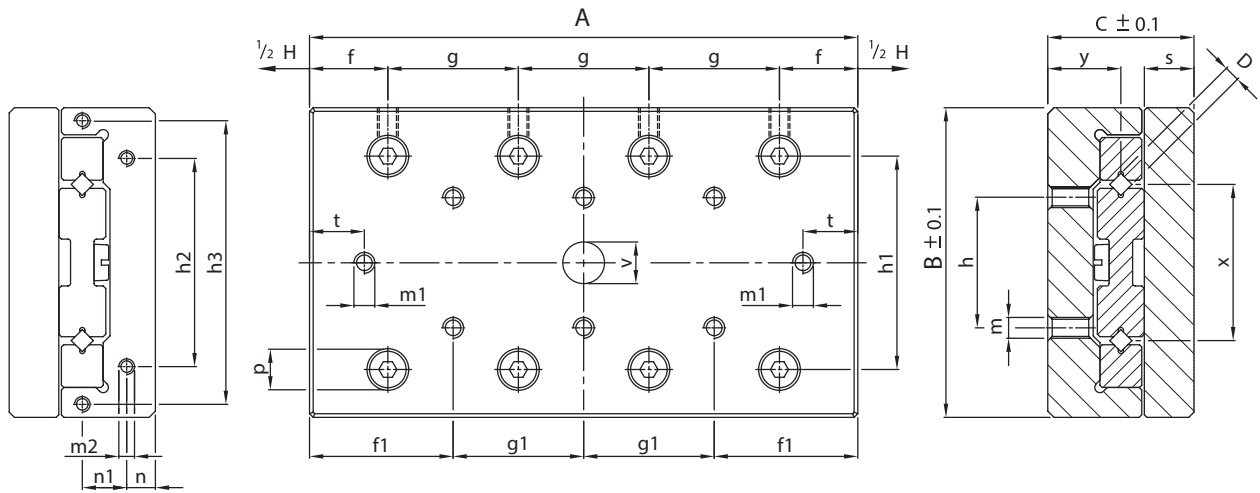
Bold = Short lead time item

Regular = Long lead time item - please request for price and delivery time



| n | p | s | t | v | x | y | C _{dyn} in N | | Weight (KG) | Md in Nm | | MI in Nm | | Mr in Nm | |
|------|------|------|-------|------|-------|-------|-----------------------|------|-------------|----------|------|----------|------|----------|------|
| | | | | | | | RTNA | RTLA | | RTNA | RTLA | RTNA | RTLA | RTNA | RTLA |
| 2.5 | 4.6 | 5.25 | 2.45 | 4.5 | 13.5 | 7.5 | 260 | - | 0.04 | 1.4 | - | 1.2 | - | 1.5 | - |
| | | | 364 | | | | 312 | 0.05 | 2.1 | 2.1 | 2.5 | 1.9 | 1.9 | 1.7 | |
| | | | 520 | | | | 416 | 0.06 | 3.5 | 2.8 | 4.4 | 3.1 | 2.6 | 2.1 | |
| | | | 624 | | | | 520 | 0.08 | 4.2 | 3.5 | 5.6 | 4.4 | 3.1 | 2.6 | |
| | | | 780 | | | | 572 | 0.09 | 4.9 | 3.5 | 7.5 | 5.0 | 4.0 | 2.9 | |
| | | | 884 | | | | 676 | 0.11 | 5.6 | 4.2 | 8.7 | 6.2 | 4.6 | 3.4 | |
| | | | 1040 | | | | 780 | 0.12 | 7.0 | 4.9 | 10.6 | 7.5 | 5.5 | 4.0 | |
| | | | 1144 | | | | 832 | 0.13 | 7.7 | 5.6 | 11.9 | 8.1 | 6.1 | 4.3 | |
| | | | 1300 | | | | 936 | 0.15 | 8.4 | 6.3 | 13.7 | 9.4 | 7.0 | 4.9 | |
| 3.4 | 6.3 | 7 | 5.5 | 5.5 | 18 | 10.75 | 430 | - | 0.10 | 3.1 | - | 2.8 | - | 3.4 | - |
| | | | | | | | 688 | 602 | 0.15 | 6.2 | 4.6 | 6.9 | 5.5 | 4.6 | 4.1 |
| | | | | | | | 946 | 774 | 0.19 | 7.7 | 6.2 | 11.0 | 8.3 | 6.3 | 5.2 |
| | | | | | | | 1204 | 946 | 0.24 | 10.8 | 7.7 | 15.1 | 11.0 | 8.2 | 6.3 |
| | | | | | | | 1376 | 1118 | 0.28 | 12.4 | 9.3 | 17.9 | 13.8 | 9.5 | 7.5 |
| | | | | | | | 1634 | 1290 | 0.33 | 13.9 | 10.8 | 22.0 | 16.5 | 11.4 | 8.8 |
| | | | | | | | 1892 | 1376 | 0.37 | 17.0 | 12.4 | 26.1 | 17.9 | 13.4 | 9.5 |
| | | | | | | | 2150 | 1548 | 0.42 | 18.6 | 13.9 | 30.3 | 20.6 | 15.4 | 10.8 |
| | | | | | | | 2408 | 1720 | 0.46 | 21.7 | 15.5 | 34.4 | 23.4 | 17.5 | 12.1 |
| 5.5 | 7.8 | 8.25 | 5.5 | 8 | 30 | 12.25 | - | 952 | 0.30 | - | 12.2 | - | 10.9 | - | 5.4 |
| | | | | | | | 1496 | 1224 | 0.44 | 20.4 | 16.3 | 21.8 | 16.3 | 13.6 | 11.5 |
| | | | | | | | 2040 | 1632 | 0.58 | 28.6 | 24.5 | 32.6 | 24.5 | 18.2 | 14.7 |
| | | | | | | | 2448 | 1904 | 0.72 | 36.7 | 28.6 | 40.8 | 29.9 | 22.0 | 17.0 |
| | | | | | | | 2992 | 2312 | 0.85 | 44.9 | 32.6 | 51.7 | 38.1 | 27.1 | 20.7 |
| | | | | | | | 3536 | 2584 | 0.99 | 53.0 | 36.7 | 62.6 | 43.5 | 32.3 | 23.2 |
| | | | | | | | 4080 | 2992 | 1.13 | 61.2 | 44.9 | 73.4 | 51.7 | 37.6 | 27.1 |
| | | | | | | | 5032 | 3672 | 1.41 | 73.4 | 53.0 | 92.5 | 65.3 | 47.0 | 33.6 |
| | | | | | | | 6120 | 4352 | 1.68 | 89.8 | 65.3 | 114.2 | 78.9 | 57.7 | 40.3 |
| | | | | | | | 7072 | 5032 | 1.97 | 106.1 | 73.4 | 133.3 | 92.5 | 67.1 | 47.0 |
| 8160 | 5712 | 2.15 | 122.4 | 85.7 | 155.0 | 106.1 | 77.9 | 53.7 | | | | | | | |

Units: mm

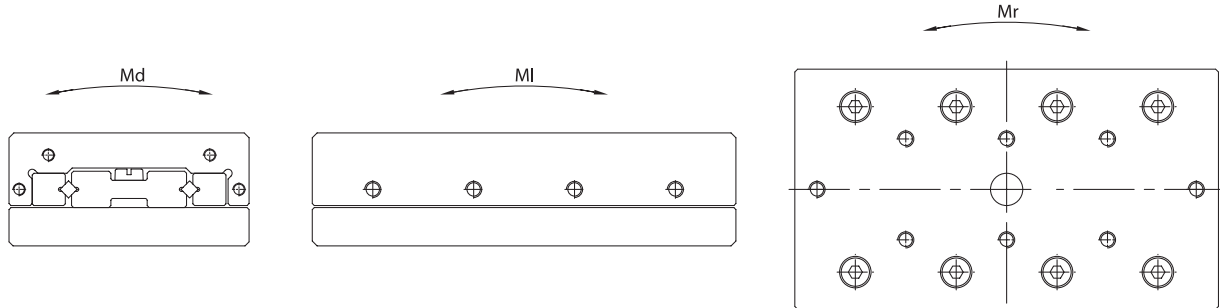


Configuration mounting holes in slide-base: see page 106 and 107

| Type | Stroke H | | | | | | | | | | | | | | | | |
|-----------|----------|-----|----|---|------|------|------|------|-------|-------|-----|-----|----|-----|----|----|--|
| | A | B | C | D | RTNA | RTLA | f | f1 | g | g1 | h | h1 | h2 | h3 | m | m1 | |
| RTA-4080 | 85 | | | | 50 | - | | | 1x40 | - | | | | | | | |
| RTA-4120 | 125 | | | | 75 | 90 | | | 2x40 | 1x40 | | | | | | | |
| RTA-4160 | 165 | | | | 105 | 130 | | | 3x40 | 2x40 | | | | | | | |
| RTA-4200 | 205 | | | | 130 | 170 | | | 4x40 | 3x40 | | | | | | | |
| RTA-4240 | 245 | 80 | 35 | 4 | 155 | 210 | 22.5 | 42.5 | 5x40 | 4x40 | 40 | 53 | 55 | - | M5 | M5 | |
| RTA-4280 | 285 | | | | 185 | 250 | | | 6x40 | 5x40 | | | | | | | |
| RTA-4320 | 325 | | | | 210 | 290 | | | 7x40 | 6x40 | | | | | | | |
| RTA-4360 | 365 | | | | 235 | 330 | | | 8x40 | 7x40 | | | | | | | |
| RTA-4400 | 405 | | | | 265 | 370 | | | 9x40 | 8x40 | | | | | | | |
| RTA-6100 | 110 | | | | 50 | 70 | | | 1x50 | - | | | | | | | |
| RTA-6150 | 160 | | | | 75 | 120 | | | 2x50 | 1x50 | | | | | | | |
| RTA-6200 | 210 | | | | 100 | 170 | | | 3x50 | 2x50 | | | | | | | |
| RTA-6250 | 260 | | | | 125 | 220 | | | 4x50 | 3x50 | | | | | | | |
| RTA-6300 | 310 | | | | 150 | 270 | | | 5x50 | 4x50 | | | | | | | |
| RTA-6350 | 360 | 100 | 40 | 6 | 175 | 320 | 30 | 55 | 6x50 | 5x50 | 50 | 65 | 60 | 92 | M6 | M6 | |
| RTA-6400 | 410 | | | | 200 | 370 | | | 7x50 | 6x50 | | | | | | | |
| RTA-6450 | 460 | | | | 225 | 420 | | | 8x50 | 7x50 | | | | | | | |
| RTA-6500 | 510 | | | | 250 | 470 | | | 9x50 | 8x50 | | | | | | | |
| RTA-6600 | 610 | | | | 300 | 570 | | | 11x50 | 10x50 | | | | | | | |
| RTA-6700 | 710 | | | | 350 | 670 | | | 13x50 | 12x50 | | | | | | | |
| RTA-9100 | 110 | | | | 50 | - | 30 | 55 | 1x50 | - | | | | | | | |
| RTA-9200 | 210 | | | | 100 | 150 | | | 1x100 | - | | | | | | | |
| RTA-9300 | 310 | | | | 150 | 250 | | | 2x100 | 1x100 | | | | | | | |
| RTA-9400 | 410 | | | | 200 | 350 | | | 3x100 | 2x100 | | | | | | | |
| RTA-9500 | 510 | | 60 | 9 | 250 | 450 | 55 | 105 | 4x100 | 3x100 | 100 | 104 | 90 | 135 | M8 | M8 | |
| RTA-9600 | 610 | | | | 300 | 550 | | | 5x100 | 4x100 | | | | | | | |
| RTA-9700 | 710 | | | | 350 | 650 | | | 6x100 | 5x100 | | | | | | | |
| RTA-9800 | 810 | | | | 400 | 750 | | | 7x100 | 6x100 | | | | | | | |
| RTA-9900 | 910 | | | | 450 | 850 | | | 8x100 | 7x100 | | | | | | | |
| RTA-91000 | 1010 | | | | 500 | 950 | | | 9x100 | 8x100 | | | | | | | |

Bold = Short lead time item

Regular = Long lead time item - please request for price and delivery time



| m2 | n | n1 | p | s | t | v | x | y | C _{dyn} in N | | Weight (KG) | Md in Nm | | MI in Nm | | Mr in Nm | |
|-------|-------|-------|--------|--------|--------|--------|--------|--------|-----------------------|-------|-------------|----------|--------|----------|--------|----------|--------|
| | | | | | | | | | RTNA | RTLA | | RTNA | RTLA | RTNA | RTLA | RTNA | RTLA |
| M3 | 6.5 | - | 10 | 10.5 | 9 | 9.5 | 40 | 18.5 | 1855 | - | 0.78 | 31.8 | - | 29.7 | - | 25.9 | - |
| | | | | | | | | | 2915 | 2650 | 1.14 | 53.0 | 53.0 | 59.4 | 51.9 | 36.5 | 33.5 |
| | | | | | | | | | 3710 | 3445 | 1.51 | 74.2 | 63.6 | 81.6 | 74.2 | 46.0 | 42.7 |
| | | | | | | | | | 4770 | 4240 | 1.87 | 95.4 | 84.8 | 111.3 | 96.5 | 59.6 | 52.7 |
| | | | | | | | | | 5830 | 4770 | 2.24 | 116.6 | 95.4 | 141.0 | 111.3 | 73.6 | 59.6 |
| | | | | | | | | | 6890 | 5565 | 2.60 | 137.8 | 106.0 | 170.7 | 133.6 | 87.9 | 70.1 |
| | | | | | | | | | 7950 | 6360 | 3.00 | 159.0 | 127.2 | 200.3 | 155.8 | 102.4 | 80.7 |
| | | | | | | | | | 9010 | 7155 | 3.30 | 180.2 | 137.8 | 230.0 | 178.1 | 116.9 | 91.5 |
| M4 | 8 | 15 | 11 | 12 | 10 | 11 | 46 | 20 | 4320 | 3780 | 1.65 | 97.2 | 72.9 | 97.2 | 77.8 | 68.7 | 62.2 |
| | | | | | | | | | 6480 | 5400 | 2.43 | 145.8 | 121.5 | 175.0 | 136.1 | 100.1 | 83.6 |
| | | | | | | | | | 8640 | 6480 | 3.20 | 194.4 | 145.8 | 252.7 | 175.0 | 135.4 | 100.1 |
| | | | | | | | | | 10800 | 8100 | 3.98 | 243.0 | 170.1 | 330.5 | 233.3 | 172.2 | 126.4 |
| | | | | | | | | | 13500 | 9720 | 4.75 | 291.6 | 218.7 | 427.7 | 291.6 | 219.3 | 153.7 |
| | | | | | | | | | 15660 | 11340 | 5.52 | 340.2 | 243.0 | 505.4 | 349.9 | 257.4 | 181.6 |
| | | | | | | | | | 17820 | 12420 | 6.30 | 388.8 | 267.3 | 583.2 | 388.8 | 295.6 | 200.4 |
| | | | | | | | | | 19980 | 14040 | 7.07 | 437.4 | 315.9 | 661.0 | 447.1 | 334.0 | 228.8 |
| M4 | 11 | 20 | 14 | 17 | 17 | 14 | 78 | 31 | 6750 | - | 3.55 | 210.6 | - | 151.2 | - | 223.8 | - |
| | | | | | | | | | 13500 | 10800 | 6.92 | 526.5 | 421.2 | 529.2 | 378.0 | 338.2 | 283.0 |
| | | | | | | | | | 21600 | 16200 | 10.50 | 842.4 | 631.8 | 982.8 | 680.4 | 534.6 | 400.1 |
| | | | | | | | | | 28350 | 21600 | 14.17 | 1053.0 | 842.4 | 1360.8 | 982.8 | 712.2 | 534.6 |
| | | | | | | | | | 35100 | 25650 | 17.84 | 1368.9 | 947.7 | 1738.8 | 1209.6 | 894.5 | 640.4 |
| | | | | | | | | | 43200 | 31050 | 21.51 | 1684.8 | 1158.3 | 2192.4 | 1512.0 | 1116.2 | 784.8 |
| | | | | | | | | | 49950 | 35100 | 25.18 | 1895.4 | 1368.9 | 2570.4 | 1738.8 | 1302.3 | 894.5 |
| | | | | | | | | | 56700 | 40500 | 28.95 | 2211.3 | 1579.5 | 2948.4 | 2041.2 | 1489.2 | 1042.1 |
| 64800 | 44550 | 32.52 | 2527.2 | 1684.8 | 3402.0 | 2268.0 | 1714.0 | 1153.4 | | | | | | | | | |
| 71550 | 49950 | 35.98 | 2737.8 | 1895.4 | 3780.0 | 2570.4 | 1901.7 | 1302.3 | | | | | | | | | |

Units: mm

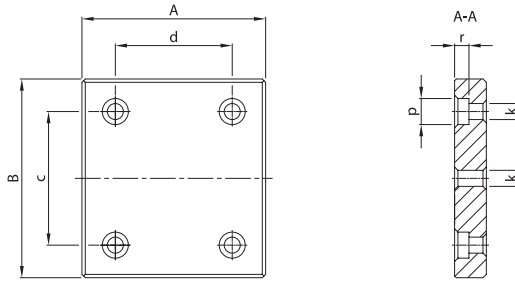


Fig. 1

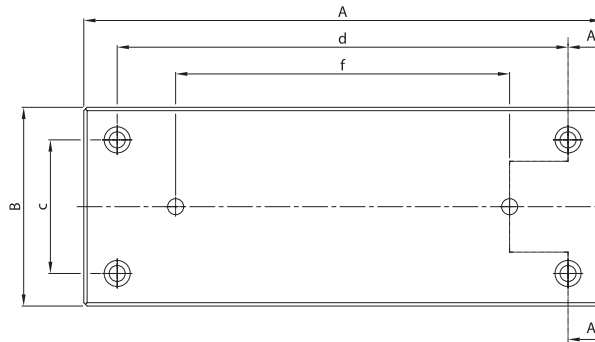


Fig. 2

Configuration mounting holes in slide-base

| Type | A | B | c | d | e | f | g | k | p | r | Fig. |
|-----------------|-----|----|----|-----|-----|----|---|-----|-----|-----|------|
| RTA-1520 | 25 | | | 17 | - | - | - | | | | 1 |
| RTA-1530 | 35 | | | 27 | - | - | - | | | | 1 |
| RTA-1540 | 45 | | | 37 | - | - | - | | | | 1 |
| RTA-1550 | 55 | | | 47 | - | 25 | - | | | | 2 |
| RTA-1560 | 65 | 30 | 22 | 57 | - | 30 | - | 3 | 5 | 2.5 | 2 |
| RTA-1570 | 75 | | | 67 | - | 35 | - | | | | 2 |
| RTA-1580 | 85 | | | 77 | - | 40 | - | | | | 2 |
| RTA-1590 | 95 | | | 87 | - | 45 | - | | | | 2 |
| RTA-15100 | 105 | | | 97 | - | 50 | - | | | | 2 |
| RTA-2030 | 35 | | | 25 | - | - | - | | | | 1 |
| RTA-2045 | 50 | | | 40 | - | - | - | | | | 1 |
| RTA-2060 | 65 | | | 55 | - | - | - | | | | 1 |
| RTA-2075 | 80 | | | 70 | - | - | - | | | | 1 |
| RTA-2090 | 95 | | | 85 | - | 45 | - | | | | 2 |
| RTA-2105 | 110 | 40 | 30 | 100 | - | 50 | - | 3.8 | 6.3 | 3.3 | 2 |
| RTA-2120 | 125 | | | 115 | - | 30 | - | | | | 2 |
| RTA-2135 | 140 | | | 130 | - | 40 | - | | | | 2 |
| RTA-2150 | 155 | | | 145 | - | 40 | - | | | | 2 |
| RTA-3050 | 55 | | | 35 | - | - | - | | | | 1 |
| RTA-3075 | 80 | | | 60 | - | - | - | | | | 1 |
| RTA-3100 | 105 | | | 85 | - | - | - | | | | 1 |
| RTA-3125 | 130 | | | 110 | - | - | - | | | | 1 |
| RTA-3150 | 155 | | | 135 | - | 75 | - | | | | 2 |
| RTA-3175 | 180 | 60 | 40 | 160 | - | 86 | - | 4.8 | 7.8 | 4.3 | 2 |
| RTA-3200 | 205 | | | 185 | - | 55 | - | | | | 2 |
| RTA-3250 | 255 | | | 235 | 145 | 55 | - | | | | 3 |
| RTA-3300 | 305 | | | 285 | 165 | 65 | - | | | | 3 |
| RTA-3350 | 355 | | | 335 | 195 | 75 | - | | | | 3 |
| RTA-3400 | 405 | | | 385 | 225 | 85 | - | | | | 3 |

Bold = Short lead time item

Regular = Long lead time item - please request for price and delivery time

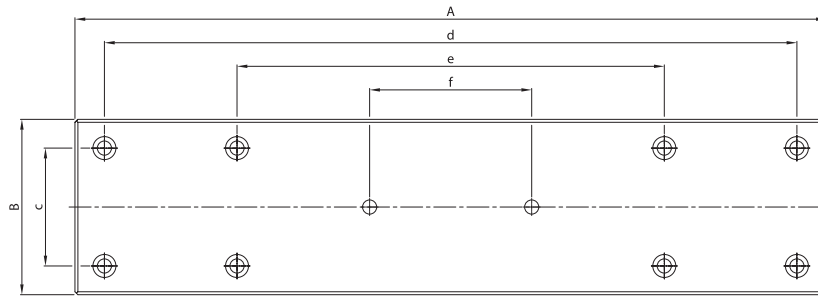


Fig. 3

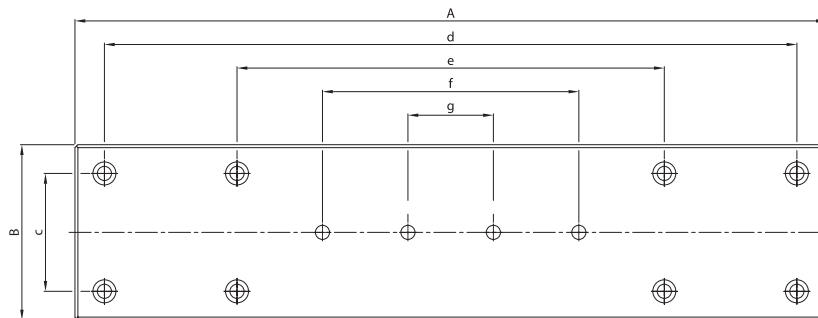


Fig. 4

| Type | A | B | c | d | e | f | g | k | p | r | Fig. |
|-----------|------|-------|----|-----|-----|-----|-----|-----|----|-----|------|
| RTA-4080 | 85 | | | 65 | - | - | - | | | | 1 |
| RTA-4120 | 125 | | | 105 | - | - | - | | | | 1 |
| RTA-4160 | 165 | | | 145 | - | - | - | | | | 1 |
| RTA-4200 | 205 | | | 185 | - | 105 | - | | | | 2 |
| RTA-4240 | 245 | 80 | 55 | 225 | - | 145 | - | 5.5 | 10 | 5.4 | 2 |
| RTA-4280 | 285 | | | 265 | - | 185 | - | | | | 2 |
| RTA-4320 | 325 | | | 305 | 145 | 225 | - | | | | 3 |
| RTA-4360 | 365 | | | 345 | 185 | 265 | - | | | | 3 |
| RTA-4400 | 405 | | | 385 | 225 | 305 | - | | | | 3 |
| RTA-6100 | 110 | | | 90 | - | - | - | | | | 1 |
| RTA-6150 | 160 | | | 140 | - | - | - | | | | 1 |
| RTA-6200 | 210 | | | 190 | - | 100 | - | | | | 2 |
| RTA-6250 | 260 | | | 240 | - | 120 | - | | | | 2 |
| RTA-6300 | 310 | | | 290 | - | 150 | - | | | | 2 |
| RTA-6350 | 360 | 100 | 60 | 340 | 200 | 80 | - | 6.8 | 11 | 6.3 | 3 |
| RTA-6400 | 410 | | | 390 | 230 | 90 | - | | | | 3 |
| RTA-6450 | 460 | | | 440 | 260 | 100 | - | | | | 3 |
| RTA-6500 | 510 | | | 490 | 290 | 110 | - | | | | 3 |
| RTA-6600 | 610 | | | 590 | 350 | 210 | 70 | | | | 4 |
| RTA-6700 | 710 | | | 690 | 410 | 250 | 90 | | | | 4 |
| RTA-9100 | 110 | | | 80 | - | - | - | | | | 1 |
| RTA-9200 | 210 | | | 100 | - | - | - | | | | 1 |
| RTA-9300 | 310 | | | 200 | - | - | - | | | | 1 |
| RTA-9400 | 410 | | | 300 | - | 180 | - | | | | 2 |
| RTA-9500 | 510 | 148.4 | 90 | 400 | - | 240 | - | 9 | 14 | 8.7 | 2 |
| RTA-9600 | 610 | | | 500 | 340 | 120 | - | | | | 3 |
| RTA-9700 | 710 | | | 600 | 400 | 140 | - | | | | 3 |
| RTA-9800 | 810 | | | 700 | 460 | 280 | 100 | | | | 4 |
| RTA-9900 | 910 | | | 800 | 520 | 320 | 120 | | | | 4 |
| RTA-91000 | 1010 | | | 900 | 600 | 360 | 120 | | | | 4 |

Units: mm



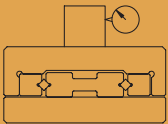
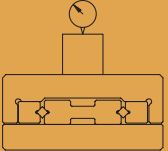
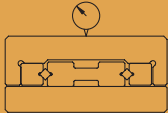
RUNNING ACCURACIES AND TOLERANCES

PM slides are delivered with accuracies as mentioned in the table below. The checks on the slides are made in unloaded horizontal position. The shown values can also be used for 2-axis combinations. If so, please refer to the belonging slide-strokes. When more axis are used in a

combination it will be more complicated and we offer in these questions our experience.

On request the precision slides will be delivered with a certificate of compliance, measured with a HP laser accuracy equipment.

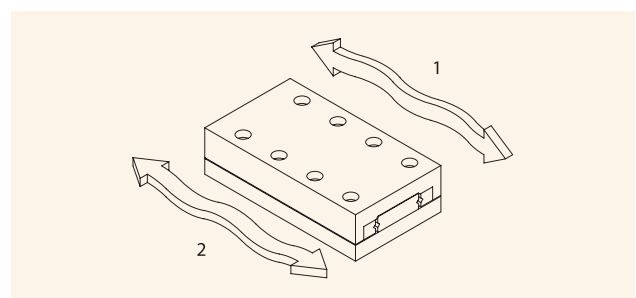
Special higher accuracy grade slides can be requested.

| Type | A in mm |  Straight line accuracy in μm over travellenght on the side |  Flatness accuracy in μm over travellenght on the top |  Parallism in μm , neutral position on side top |
|--------------------------------|----------|---|--|---|
| RT (RTN/RTL) | 25-50 | 2 | 2 | 5 |
| | 55-95 | 3 | 2 | 6 |
| | 105-155 | 4 | 3 | 7 |
| | 160-305 | 4 | 3 | 8 |
| | 310-510 | 4 | 4 | 10 |
| | 510-710 | 5 | 4 | 13 |
| | 810-1010 | 5 | 5 | 15 |
| RTA (RTNA/RTLA) Aluminum | 25-50 | 2 | 2 | 5 |
| | 55-95 | 3 | 2 | 5 |
| | 105-155 | 4 | 3 | 8 |
| | 160-305 | 4 | 3 | 10 |
| | 310-510 | 4 | 4 | 15 |
| | 510-710 | 5 | 4 | 20 |
| | 810-1010 | 5 | 5 | 25 |
| RTNG | 52-91 | 2 | 2 | 5 |
| | 106-166 | 3 | 2 | 6 |
| | 171-314 | 3 | 3 | 7 |
| | 317-517 | 4 | 3 | 10 |
| | 524-817 | 4 | 4 | 13 |
| | 824-1028 | 5 | 5 | 15 |
| RTS | 25-45 | 3 | 3 | 2 |
| | 55-95 | 4 | 4 | 4 |
| | 105-155 | 5 | 5 | 5 |
| PMM und PMMR | 15-30 | 3 | 4 | 5 |
| | 35-50 | 4 | 4 | 6 |
| | 60-80 | 5 | 6 | 8 |

1. STRAIGHT LINE ACCURACY: this is the amount of error deviates from the ideal straight line of travel in the vertical plane.

2. FLATNESS ACCURACY: this is the amount of error deviates from the ideal straight line of travel in the horizontal plane.

PARALLISM IN M, NEUTRAL POSITION ON SLIDE TOP: the parallism of the table surfaces occurs unloaded on a flat, horizontal surface in zero-position.



PM RESEARCH AND PRODUCTION FACILITY



PM B.V.

Galileistraat 2
NL-7701 SK, Dedemsvaart
The Netherlands

Tel: +31 523 61 22 58
info@pm.nl

WWW.PM.NL

2017