

# 01

## Cross Roller Bearing

- Introduction & Model Selection \_\_\_\_\_ P.04
- Model Characteristics & Features \_\_\_\_\_ P.05-06
- Formulas \_\_\_\_\_ P.07-11
- Installation Procedure & Precautions \_\_\_\_\_ P.12-13
- Accuracy Standards \_\_\_\_\_ P.14
- Rotational Accuracy \_\_\_\_\_ P.15-16
- Dimensional Tolerance \_\_\_\_\_ P.17
- SRAUF Tolerance & Accuracy \_\_\_\_\_ P.18
- Radial Clearance \_\_\_\_\_ P.19
- Model Number Composition \_\_\_\_\_ P.20-30

# 02

## Gonio Way

- Introduction & Characteristics \_\_\_\_\_ P.34
- Accuracy Standards \_\_\_\_\_ P.35
- Rated Life \_\_\_\_\_ P.36
- Precautions \_\_\_\_\_ P.37
- Slideway structure & installation procedures \_\_\_\_\_ P.38-39
- Model Number Composition \_\_\_\_\_ P.40-41

# 03

## References

- Applications & Demonstration \_\_\_\_\_ P.44-46



A decorative light blue swoosh that curves from the bottom left towards the top right, framing the central text.

# 01

**Cross Roller Bearing**

## Cross Roller Bearing

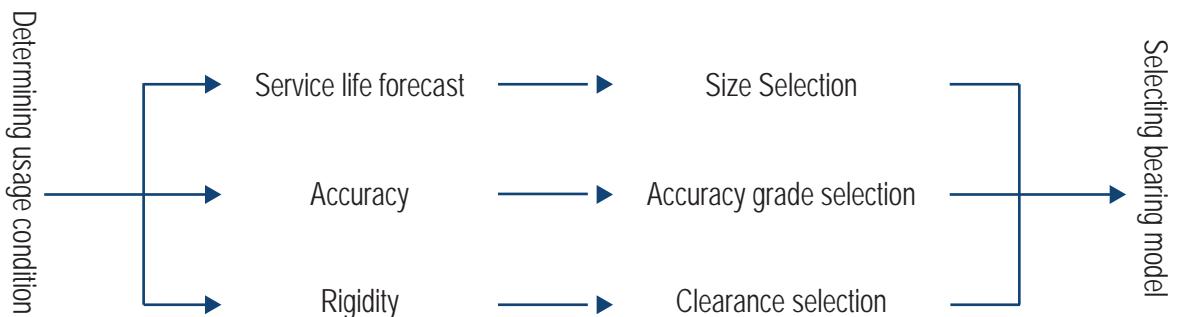
Cross roller bearings consist of inner rings, outer rings, spacer retainers and cylindrical rollers cross arranged on the V-shaped  $90^\circ$  groove between the inner and outer rings. This structure can withstand radial, axial and moment loads in all directions because the rollers' line contact with raceway surfaces achieve a large load-bearing area despite the minimum dimensions. Therefore these bearings are widely used on the rotating parts of industrial robots, machine tools, precision rotary tables, measuring instruments and IC manufacturing machines.

### Product Features

- High rigidity
- Large load capacity
- High rotation accuracy
- Compactness
- Easy to install and handle

## Cross Roller Bearing selection

The procedures for the selection and usage of cross roller bearings are based on the following figure



## Models & Features



### SRU Model (One-Piece Inner & Outer Ring)

The single structure with mounting holes on inner and outer rings does not require the use of flange discs or housings; therefore reduces mounting errors, achieves stable rotational accuracy and moment torque. Suitable for inner and outer ring rotation



### SRB models (Split Outer Ring model for inner ring rotation)

Standard model with two split outer rings bolted together and a one-piece inner ring suitable for precision inner ring rotation.



### SRBE Model (One-Piece Inner & Outer Ring)

The one-piece inner & outer ring structure provides high rigidity, high accuracy and smooth rotation; suitable for inner and outer ring rotation



### SRAU Model (One-Piece Inner & Outer Ring)

Super slim type cross roller bearing with three options of bearing width: 5mm, 8mm and 13mm. Rigid and compact design is suitable for limited space and lightweight mechanism.



### SRAUF (One-Piece Inner & Outer Ring)

Super slim cross roller bearing with mounting holes. Designs for easy installation that significantly reduces equipment weight and size.



### SSHF Model (One-Piece Inner & Outer Ring)

Specifically designed for SHF type strain wave gears, this cross roller bearing has mounting holes for easy installation.



### SCSG Model (Split outer ring)

Specifically designed for CSG type strain wave gears, this cross roller bearing has mounting holes for easy installation.

## Basic Rated Life

The 90% of a group of identical Cross Roller Bearings can operate individually under the same conditions without showing material damage such as flaking caused by rolling fatigue. The basic rated life is represented by the total service hours for rotations at a constant rotational speed.

The service life of the cross roller bearing is calculated using the following formula:

L : basic rated life

C : basic dynamic load rating

P : dynamic-equivalent load

$$L = \left( \frac{C}{P} \right)^{\frac{10}{3}}$$

The number of revolutions is expressed in the unit of  $10^6$  (rev)

## Dynamic Equivalent Radial Load : P

The dynamic-equivalent radial load on cross roller bearings is calculated using the following formula:

P : dynamic-equivalent radial load (kN)

Fr : radial load (kN)

Fa : axial load (kN)

M : moment (kN·mm)

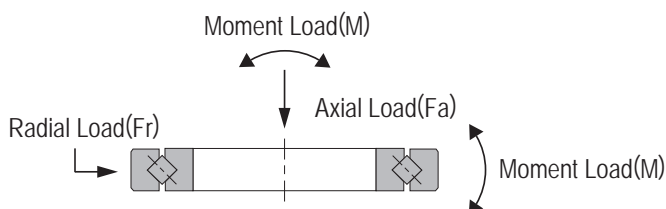
X : dynamic radial coefficient (see table1)

Y : dynamic axial coefficient (see table1)

dw : pitch circle diameter of rollers (mm)

$$P = X \cdot \left( Fr + \frac{2M}{dw} \right) + Y \cdot Fa$$

## Dynamic Equivalent Radial Load : P



(table 1)

Dynamic radial and axial coefficients

Categories	X	Y
$\frac{Fa}{Fr+2M/dw} \leq 1.5$	1	0.45
$\frac{Fa}{Fr+2M/dw} > 1.5$	0.67	0.67

## An example for rated life calculation

Calculate the rated life when bearings are used under the following conditions

ID :  $d=110$  (mm)     $W_1 = 700$  (N)     $Fr = 2500$  (N)  
 OD :  $D=160$  (mm)     $W_2 = 2000$  (N)     $L = 700$  (mm)

Example: Model SRB11020

Pitch circle diameter :  $d_w = 135$  (mm)

Basic dynamic load rating  $C = 34000$  N

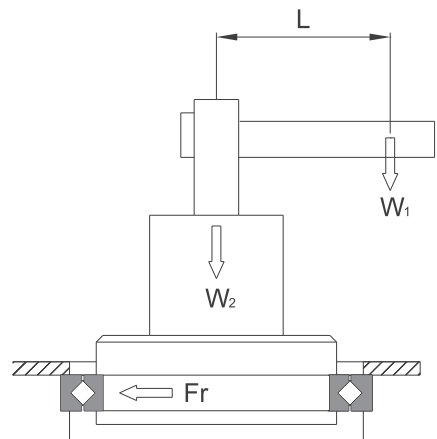
Basic static load rating  $C_0 = 54000$  N

Radial load :  $Fr = 2500$  (N)

Axial load :  $F_a = W_1 + W_2 = 700 + 2000 = 2700$  (N)

Moment load :  $M = W_1 \times L = 700 \times 700 = 490000$  (N·mm)

PCD :  $d_w = (d+D)/2 = (110+160)/2 = 135$  (mm)



$$\frac{F_a}{Fr + 2M/d_w} = \frac{2700}{2500 + 2 \times 490000 / 135} \cong 0.2766 < 1.5$$

Hence, if radial load coefficient:  $x=1$ , axial load

coefficient:  $y=0.45$ , then dynamic-equivalent radial load:

$$P = X \cdot \left( Fr + \frac{2M}{d_w} \right) + Y \cdot F_a = 1 \times \left( 2500 + \frac{2 \times 490000}{135} \right) + 0.45 \cdot 2700 = 10974 \text{ (N)}$$

$$\text{Basic rated life : } L = \left( \frac{C}{P} \right)^{\frac{10}{3}} = \left( \frac{34000}{10974} \right)^{\frac{10}{3}} = 43.35^6 \text{ (x10 rev)}$$



## Static safety coefficient

This coefficient is determined by the basic static rated load ( $C_0$ ) and static-equivalent radial load ( $P_0$ ). When a load is statically or dynamically applied, the static safety coefficients shown in the following figure should be considered.

$f_s$  : static safety coefficient

$C_0$  : basic static rated load (kN)

$P_0$  : static equivalent radial load (kN)

$$\frac{C_0}{P_0} = f_s$$

( $f_s$ ) Static safety coefficient

Load conditions	Lower Limit of $f_s$
Normal load	1~2
Impact load	2~3

## Static equivalent radial load : $P_0$

The cross roller bearing's static equivalent radial load is calculated using the following formula.

$P_0$  : Static-equivalent radial load (kN)

$F_r$  : radial load (kN)

$F_a$  : axial load (kN)

$M$  : moment (kN·mm)

$X_0$  : static radial coefficient ( $X_0=1$ )

$Y_0$  : static axial coefficient ( $Y_0=0.44$ )

$d_w$  : pitch circle diameter of rollers (mm)

$$P_0 = X_0 \cdot \left( F_r + \frac{2M}{d_w} \right) + Y_0 \cdot F_a$$

## Fit

### Fitting of Models SRU

Fitting of Models SRU Fitting required positioning accuracy, h7 and H7 are recommended.

### Fitting of Models SRAU

Fitting of Models SRAU Fitting required positioning accuracy, g5 and g6 for the shaft and H7 for the housing are recommended.

\*Note: When using a Model SRAU (width 5 mm type), there is no interference on design devices.

### Fitting of Models SRB&SRBE

Radial Clearance	Service Conditions		Shaft	Housing
S1	Inner ring rotational load	Normal Load	g5	H7
		Large impact and moment		
	Outer ring rotational load	Normal Load		
		Large impact and moment		
C1	Inner ring rotational load	Normal Load	h5	H7
		Large impact and moment		
	Outer ring rotational load	Normal Load	g5	Js7
		Large impact and moment		

\*Note: For the fitting for clearance S1, please avoid interference because it will cause an excessive preload. In addition, if higher rigidity is required, we recommend measuring the inner and outer diameters of the bearing and applying a slight interference fit to match the diameters.

## Methods and design of the housing and flange disc

Due to the thin wall structure of the cross roller bearings, full consideration must be given to the rigidity of the housing and flange discs. With split type bearings, if the housing or flange disc is not rigid enough, the inner ring or outer ring cannot be evenly held, resulting bearing deformation when moment load is applied. Therefore, the contact area of the rollers will become uneven, causing significant decrease in bearing performance.

To prevent this from occurring, it is recommended to design the housing and flange discs by the following methods:

**Housing:** at least 60% of the sectional height of the cross roller bearing

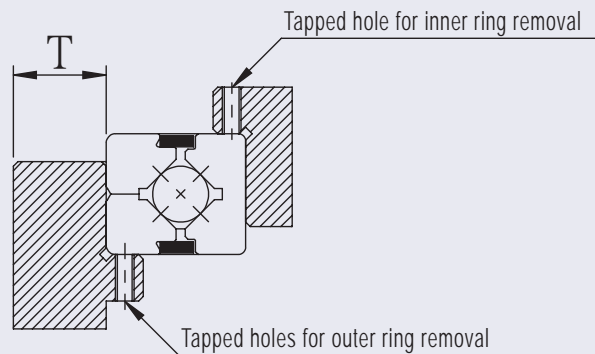
Housing wall thickness :

$$T = \frac{(D-d)}{2} \times 0.6 \text{ or greater}$$

(D: outer diameter of the outer ring; d: inner diameter of the inner ring)

### Tapped hole for bearing removal

Alternatively, tapped holes for removing bearings may be set up on the housing; when it is necessary to remove the bearings from housing, the screws may be locked into the tapped holes to push the bearing out without incurring any damage.



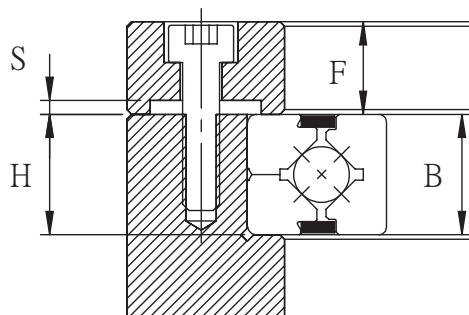
## Flange discs and locking screws

The values of the wall thickness (F) or the clearance (S) of the flange discs may be designed per the following formula. As for the quantity of locking screws, it may be configured at equal intervals by using the quantity shown in table (1).

$$F = B \times 0.5 \sim B \times 1.2$$

$$H = B \begin{smallmatrix} 0 \\ -01 \end{smallmatrix}$$

$$S = 0.5 \text{ mm}$$



It is recommended to secure the flange discs using materials made of iron. It is advised to firmly lock the screws using torque wrenches. See table (2) for the locking torques of supporting seats or supported flange discs which are made of medium hardness steel.

Table 1. Number of locking screws and size.

Unit : mm

Outer diameter of the outer ring (D)		Number of screws	Screw size (base value)
Above	Below		
-	100	8 or more	M3~M5
100	200	12 or more	M4~M8
200	500	16 or more	M5~M12
500	-	24 or more	M12 or thicker

Table 2. Screw locking torque

Unit : N·m

Screw model	Locking torque	Screw model	Locking torque
M3	2.1	M10	72
M4	3.9	M12	122
M5	9	M16	201
M6	13	M20	392
M8	31	M22	531

## Installation steps

Please follow below steps when installing cross roller bearings:

### 1. Checking each part and component before installing

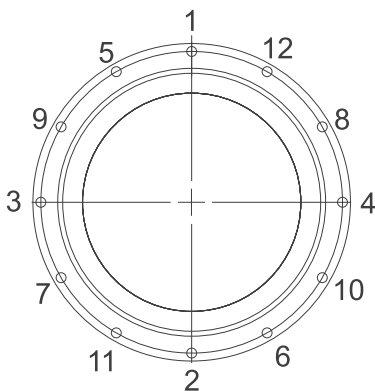
Clean the housing and other installation components, remove dirt and make sure there are no burrs.

### 2. Installing the cross roller bearings into housing or onto shaft

The cross roller bearing is easily tilted due to its thin wall structure. To install, level one side, and gradually insert the bearing by evenly and cautiously hammering along the perimeter using a rubber hammer or similar tool until the sound of the ring come in full contact with the mounting surface.

### 3. Installing the flange disc

- (1) Place the disc into position, shake it along its circumference back and forth several times to match the bolt holes.
- (2) Install screws. When manually turning the screws, make sure that the screw is fully aligned with the screw hole.
- (3) Tighten the screws in the order on the diagonal repeatedly as shown in the following figure, and fasten the disc from loose to tighten in three to four steps. When tightening the split type inner or outer rings, slightly turn the one-piece inner or outer rings to correct the misalignment between the ring and body.



## Other precautions

### Instructions on lubrication

- (1) Each cross roller bearings are pre-lubricated with high quality lithium soap grease No. 2. However, the bearings need lubricating on a regular basis and users are required to reapply same type of grease at a minimum interval ranging from 6 to 12 months to enable the distribution of grease within the entire internal structure of the bearing; the actual interval depends on the machine or usage.
- (2) Avoid mixing various kinds of lubrication grease.
- (3) When the bearings are used under such special conditions as high vibration, clean rooms, vacuum, low and high temperature, it may be impossible to use general-purpose lubrication grease and please contact us before using special type grease.

### Precautions on use

- (1) Foreign objects entering the interior of the bearings may damage the revolution path of the rollers or disable their functions; take caution to prevent foreign objects entering the bearing.
- (2) If bearings are used at an ambient temperature above 80°C, contact us first.
- (3) When foreign objects enter the interior of bearings, apply lube oil again after cleaning the product.
- (4) Do not attempt to remove the screws and nuts on the split type bearings.

# Accuracy Standards

## SRU、SRB、SRBE inner diameter dimensional accuracy

Unit :  $\mu\text{m}$ 

Inner ring diameter (d) Nominal dimension (mm)		Tolerance dm					
		0・P5・P4・P2		PS5		PS4・PS2	
Above	Below	Above	Below	Above	Below	Above	Below
18	30	0	-10	0	-6	0	-5
30	50	0	-12	0	-8	0	-6
50	80	0	-15	0	-9	0	-7
80	120	0	-20	0	-10	0	-8
120	150	0	-24	0	-12	0	-9
150	180	0	-24	0	-12	0	-10
180	250	0	-30	0	-14	0	-12
250	315	0	-34	0	-17	-	-

## SRU、SRB、SRBE outer diameter dimensional accuracy

Unit :  $\mu\text{m}$ 

Outer ring diameter (D) Nominal dimension (mm)		Tolerance dm					
		0・P5・P4・P2		PS5		PS4・PS2	
Above	Below	Above	Below	Above	Below	Above	Below
30	50	0	-11	0	-7	0	-6
50	80	0	-13	0	-9	0	-7
80	120	0	-15	0	-10	0	-8
120	150	0	-18	0	-10	0	-9
150	180	0	-24	0	-12	0	-9
180	250	0	-30	0	-15	0	-10
250	315	0	-34	0	-18	0	-12

## SRAU ID and OD dimensional accuracy

Unit :  $\mu\text{m}$ 

Inner ring diameter (d) Nominal dimension (mm)		SRAU Inner Ring		SRAU Outer Ring	
Above	Below	Above	Below	Above	Below
-	18	0	-8	-	-
18	30	0	-10	0	-9
30	50	0	-12	0	-11
50	80	0	-15	0	-13
80	120	0	-20	0	-15
120	150	0	-25	0	-18
150	180	0	-25	0	-25
180	315	0	-30	0	-30

## SRU inner ring rotational accuracy

Unit :  $\mu\text{m}$ 

Model	Inner ring radial/axial run-out tolerance		
	P5	P4	P2
SRU42	4	3	2.5
SRU66	5	4	2.5
SRU85	5	4	2.5
SRU124	5	4	2.5
SRU148	6	5	2.5
SRU178	6	5	2.5
SRU228	8	6	5

## SRU outer ring rotational accuracy

Unit :  $\mu\text{m}$ 

Model	Outer ring radial/axial run-out tolerance		
	P5	P4	P2
SRU42	8	5	4
SRU66	10	6	5
SRU85	10	6	5
SRU124	12	8	5
SRU148	15	10	7
SRU178	15	10	7
SRU228	18	11	7

## SRB、SRBE inner ring rotational accuracy

Unit :  $\mu\text{m}$ 

Inner ring diameter (d) Nominal dimension (mm)		Inner ring radial run-out tolerance				Inner ring axial run-out tolerance			
Above	Below	0	PS5 P5	PS4 P4	PS2 P2	0	PS5 P5	PS4 P4	PS2 P2
18	30	12	4	3	2.5	12	4	3	2.5
30	50	13	5	4	2.5	13	5	4	2.5
50	80	15	5	4	2.5	15	5	4	2.5
80	120	20	6	5	2.5	20	6	5	2.5
120	150	20	8	6	2.5	20	8	6	2.5
150	180	25	8	6	5	25	8	6	5
180	250	25	10	8	5	25	10	8	5
250	315	35	13	10	-	35	13	10	-

## SRBE outer ring rotational accuracy

Unit :  $\mu\text{m}$ 

Outer ring diameter (D) Nominal dimension (mm)		Outer ring radial run-out tolerance				Outer ring axial run-out tolerance			
		0	PS5 P5	PS4 P4	PS2 P2	0	PS5 P5	PS4 P4	PS2 P2
Above	Below	Maximum				Maximum			
30	50	20	7	5	2.5	20	7	5	2.5
50	80	25	8	5	4	25	8	5	4
80	120	35	10	6	5	35	10	6	5
120	150	40	11	7	5	40	11	7	5
150	180	45	13	8	5	45	13	8	5
180	250	50	15	10	7	50	15	10	7
250	315	60	18	11	7	60	18	11	7

## SRAU inner ring rotational accuracy

Unit :  $\mu\text{m}$ 

Inner ring diameter (d) Nominal dimension (mm)		Inner ring radial run-out tolerance				Inner ring axial run-out tolerance			
Above	Below	0	P6	P5	P4	0	P6	P5	P4
-	18	10	8	5	4	10	8	5	4
18	40	13	10	5	4	13	10	5	4
40	65	13	10	-	-	13	10	-	-
65	80	15	10	-	-	15	10	-	-
80	100	15	13	-	-	15	13	-	-
100	120	20	13	-	-	20	13	-	-
120	140	25	18	-	-	25	18	-	-
140	180	25	18	-	-	25	18	-	-
180	200	30	20	-	-	30	20	-	-

\*Above rotational accuracy are for width 8mm~13mm type ◦ If a certain level of accuracy is required, please contact with SFT ◦

\*Note :SRAU width 5mm Type

1.Seals are not available

2.Only available with C1 radial clearance ,S1 is not available .

## SRAU outer ring rotational accuracy

Unit :  $\mu\text{m}$ 

Outer ring diameter (d) Nominal dimension (mm)		Outer ring radial run-out tolerance				Outer ring axial run-out tolerance			
Above	Below	0	P6	P5	P4	0	P6	P5	P4
-	65	13	11	-	-	13	11	-	-
65	80	13	11	-	-	13	11	-	-
80	100	15	13	-	-	15	13	-	-
100	120	15	13	-	-	15	13	-	-
120	140	20	15	-	-	20	15	-	-
140	180	25	20	-	-	25	20	-	-
180	200	25	20	-	-	25	20	-	-
200	250	30	25	-	-	30	25	-	-

\*Above rotational accuracy are for width 8mm~13mm type ◦ If a certain level of accuracy is required, please contact with SFT ◦

\*Note :SRAU width 5mm Type

1.Seals are not available

2.Only available with C1 radial clearance ,S1 is not available .



## Inner & Outer ring width tolerances

### SRU Inner & Outer ring width tolerances

Unit :  $\mu\text{m}$ 

Model	Tolerances	
	Above	Below
SRU42	0	-70
SRU66	0	-70
SRU85	0	-70
SRU124	0	-70
SRU148	0	-70
SRU178	0	-80
SRU228	0	-80

### SRB Inner & Outer ring width tolerances (for all grades)

Unit :  $\mu\text{m}$ 

Inner ring diameter (d) Nominal dimension (mm)		Tolerances		Tolerances	
		Inner Ring		Outer Ring	
Above	Below	Above	Below	Above	Below
18	30	0	-70	0	-90
30	50	0	-70	0	-90
50	80	0	-70	0	-90
80	120	0	-70	0	-90
120	150	0	-80	0	-100
150	180	0	-80	0	-100
180	250	0	-80	0	-100
250	315	0	-80	0	-130

### SRBE Inner & Outer ring width tolerances

Tolerances	
Maximum	Minimum
0	-75

### SRAU Inner & Outer ring width tolerances

Tolerances	
Maximum	Minimum
0	-120

# SRAUF Mounting Hole Type Super Slim Cross Roller Bearing

## SRAUF ID & OD dimensional accuracy

Unit :  $\mu\text{m}$ 

Inner ring diameter (d) Nominal dimension (mm)		Inner Ring		Outer Ring	
Above	Below	Above	Below	Above	Below
10	20	0	-8	0	-9
20	30	0	-8	0	-9
30	40	0	-10	0	-13
40	50	0	-10	0	-13

## SRAUF inner ring rotational accuracy

Unit :  $\mu\text{m}$ 

Inner ring diameter (d) Nominal dimension (mm)		Inner ring radial run-out tolerance				Inner ring axial run-out tolerance			
Above	Below	0	P6	P5	P4	0	P6	P5	P4
10	20	13	8	4	3	13	8	4	3
20	30	13	8	5	4	13	8	5	4
30	40	13	10	5	4	13	10	5	4
40	50	15	10	5	4	15	10	5	4

## SRAUF Outerr ring rotational accuracy

Unit :  $\mu\text{m}$ 

Outer ring diameter (d) Nominal dimension (mm)		Outer ring radial run-out tolerance				Outer ring axial run-out tolerance			
Above	Below	0	P6	P5	P4	0	P6	P5	P4
40	50	20	10	7	5	20	10	7	5
50	60	20	13	8	5	20	13	8	5
60	70	25	13	8	5	25	13	8	5
70	80	25	13	8	5	25	13	8	5

## SRAUF Inner & Outer ring width tolerances SRAUF radial clearance

Unit :  $\mu\text{m}$ 

Tolerances	
Maximum	Minimum
0	-75

S1 Radial Clearance		C1 Radial Clearance	
Minimum	Maximum	Minimum	Maximum
-8	0	0	15
-8	0	0	15
-8	0	0	15
-8	0	0	15

# Radial Clearances

## SRU model radial clearance

Unit :  $\mu\text{m}$ 

Model	S1 Radial Clearance		C1 Radial Clearance	
	Minimum	Maximum	Minimum	Maximum
SRU42	-8	0	0	24
SRU66	-8	0	0	28
SRU85	-8	0	0	38
SRU124	-12	0	0	38
SRU148	-12	0	0	38
SRU178	-12	0	0	48
SRU228	-12	0	0	58

## SRB、SRBE model radial clearance

Unit :  $\mu\text{m}$ 

Roller Pitch Circle Diameter (dw) (mm)		S1 Radial Clearance		C1 Radial Clearance	
Above	Below	Minimum	Maximum	Minimum	Maximum
18	30	-8	0	0	14
30	50	-8	0	0	24
50	80	-8	0	0	28
80	120	-8	0	0	38
120	140	-8	0	0	38
140	160	-10	0	0	38
160	180	-10	0	0	48
180	200	-10	0	0	48
200	225	-10	0	0	58
225	250	-10	0	0	58
250	280	-14	0	0	78
280	315	-14	0	25	98
315	355	-14	0	25	108

## SRAU radial clearance

Unit :  $\mu\text{m}$ 

Roller Pitch Circle Diameter (dw) (mm)		S1 Radial Clearance		C1 Radial Clearance	
Above	Below	Minimum	Maximum	Minimum	Maximum
-	18	-	-	0	15
18	30	-	-	0	15
30	50	-	-	0	15
50	80	-8	0	0	15
80	120	-8	0	0	15
120	140	-8	0	0	15
140	160	-8	0	0	15
160	180	-10	0	0	20
180	200	-10	0	0	20
200	225	-10	0	0	20

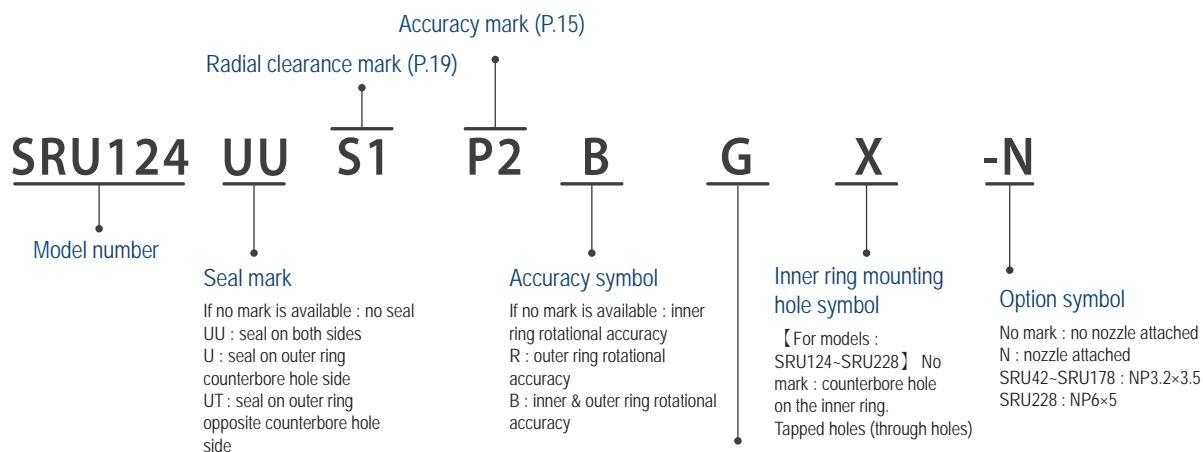
\*Above radial clearance are for width 8mm~13mm type , If a certain level of accuracy is required, please contact with SFT .

\*Note :SRAU width 5mm Type

1.Seals are not available

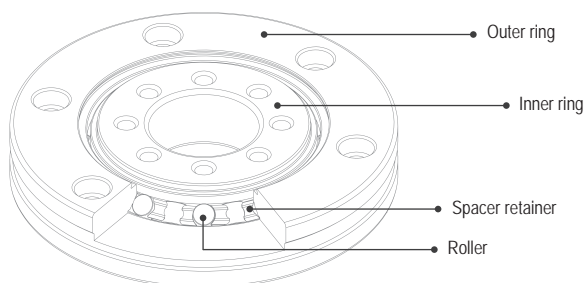
2.Only available with C1 radial clearance ,S1 is not available .

# SRU (One piece inner & outer ring)



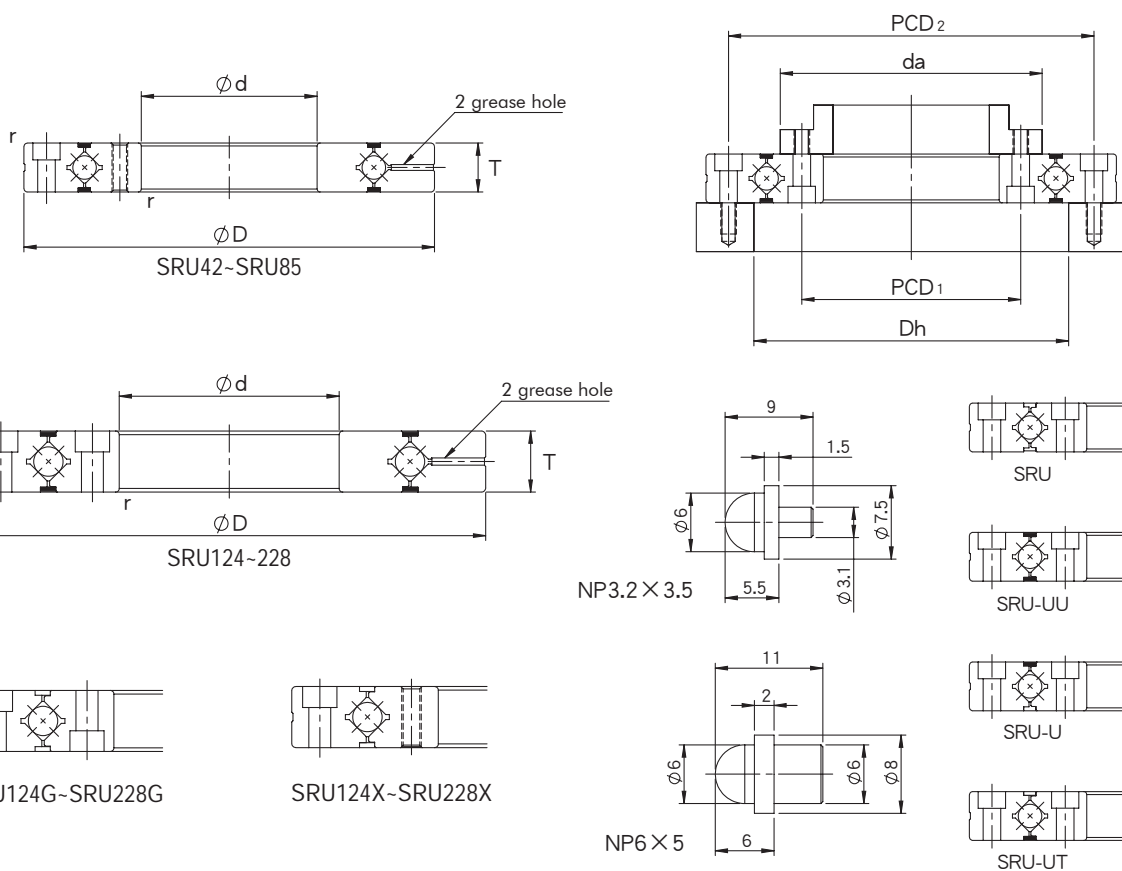
## Mounting hole orientation

【For models : SRU124~SRU228 (except X models)】  
No mark : the counterbore holes on inner and outer rings are in the same direction  
G : The counterbore holes on inner and outer rings are in reverse direction



Unit : mm

Shaft Diameter	Model Number	Main Dimensions					Shoulder Height		Basic Load Rating (Radial)		Mass
		Inner Diameter d	Outer Diameter D	Width T	Greasing Hole d1	Chamfer r <sub>min</sub>	da	Dh	C kN	C <sub>0</sub> kN	kg
20	SRU42	20	70	12	3	0.5	36	46	7.3	8.33	0.28
35	SRU66	35	95	15	3	0.5	58	75	17.53	22.31	0.6
55	SRU85	55	120	15	3	0.5	78	94	20.31	29.55	1.1
80	SRU124(G) SRU124X	80	165	22	3	1	115	133	33	50.85	2.61
90	SRU148(G) SRU148X	90	210	25	3	1.5	134	161	49	76.83	4.95
115	SRU178(G) SRU178X	115	240	28	3	1.5	162	194	80.32	134.9	6.78
160	SRU228(G) SRU228X	160	295	35	6.1	2	207	247	103.5	172.8	10.5



Mounting Hole Specification			
Inner Ring		Outer Ring	
PCD1	Mounting Hole	PCD2	Mounting Hole
28	6-M3 Through	57	6- $\phi 3.5$ Through , $\phi 6.5$ hole depth 3.5
45	8-M4 Through	83	8- $\phi 4.5$ Through , $\phi 8$ hole depth 4.5
65	8-M5 Through	105	8- $\phi 5.5$ Through , $\phi 10$ hole depth 5.5
97	10- $\phi 5.5$ Through , $\phi 10$ hole depth 5.5 10-M5 Through	148	10- $\phi 5.5$ Through , $\phi 10$ hole depth 5.5
112	12- $\phi 9.0$ Through , $\phi 14$ hole depth 8.5 12-M8 Through	187	12- $\phi 9.0$ Through , $\phi 14$ hole depth 8.5
139	12- $\phi 9.0$ Through , $\phi 14$ hole depth 8.5 12-M8 Through	217	12- $\phi 9.0$ Through , $\phi 14$ hole depth 8.5
184	12- $\phi 11$ Through , $\phi 18$ hole depth 10.8 12-M10 Through	270	12- $\phi 11$ Through , $\phi 18$ hole depth 10.8

# SRB Model (Split Outer Ring model for inner ring rotation)

## SRB20030

Model number

## UU

Seal mark

If no mark is available: no seal  
 UU : seal on both sides  
 U : seal on either side

## S1

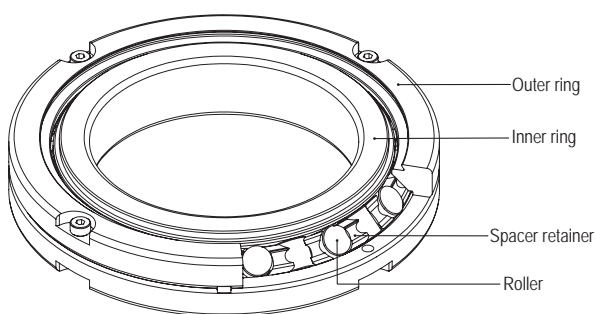
Radial clearance mark (P.19)

S1 : Preloaded (negative clearance)  
 C1 : No preload (positive clearance)

## P2

Accuracy mark (P.15)

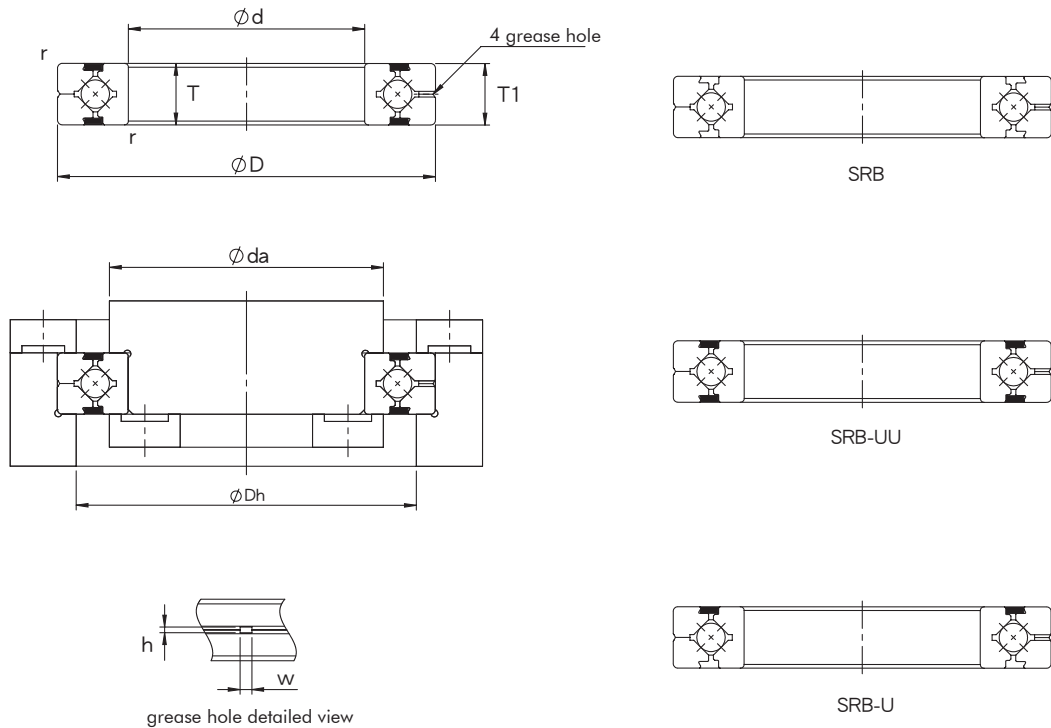
if no mark is available: ordinary grade (0 grade)  
 P5 : rotating accuracy grade 5  
 PS5 : rotating accuracy grade 5+size accuracy grade 5  
 P4 : rotating accuracy grade 4  
 PS4 : rotating accuracy grade 4 +size accuracy grade 4  
 P2 : rotating accuracy grade 2  
 PS2 : rotating accuracy grade 2 + size accuracy grad 2



Unit : mm

Shaft Diameter	Model Number	Main Dimensions						Shoulder Height		Basic Load Rating (Radial)		Mass
		Inner Diameter d	Outer Diameter D	Width T, T <sub>1</sub>	Greasing Hole		Chamfer r <sub>min</sub>	da	Dh	C kN	C <sub>0</sub> kN	kg
					w	h						
20	SRB2008	20	36	8	2.1	0.7	0.5	24	30	3.2	3.1	0.06
25	SRB2508	25	41	8	2.1	0.7	0.5	29	35	3.6	3.8	0.07
30	SRB3010	30	55	10	2.6	0.8	0.6	37.5	46.5	7.4	8.4	0.14
35	SRB3510	35	60	10	2.6	0.8	0.6	41.5	51	7.6	9.1	0.12
40	SRB4010	40	65	10	2.6	0.8	0.6	47	58	8.3	10.8	0.18
45	SRB4510	45	70	10	2.6	0.8	0.6	51.5	61	8.6	11.1	0.15
50	SRB5013	50	80	13	2.6	1.5	0.6	57	72.5	16.6	20.7	0.28
60	SRB6013	60	90	13	2.6	1.5	0.6	67.5	82.5	18	24.1	0.32
70	SRB7013	70	100	13	2.6	1.5	0.6	78.5	91.5	19.5	27.9	0.37
80	SRB8016	80	120	16	3.1	1.5	0.8	91.5	110	30	42	0.72
90	SRB9016	90	130	16	3.1	1.5	1.0	98.8	117	31.3	45.1	0.77
100	SRB10016	100	140	16	3.6	1.5	1.0	110	128	31.8	48.8	0.82
100	SRB10020	100	150	20	3.6	1.5	1.0	117	132	33	51	1.47
110	SRB11012	110	135	12	2.6	0.8	0.6	118	126	12.6	24	0.42
110	SRB11015	110	145	15	3.6	1.5	0.6	123	135	23.8	41.8	0.76
110	SRB11020	110	160	20	3.6	1.5	1.0	121	139	34	54	1.58
120	SRB12016	120	150	16	3.6	1.5	0.8	128	140	24.3	43.4	0.74
120	SRB12025	120	180	25	3.6	2.1	1.5	134	163	66.8	100.2	2.62

Note) (w) and (h) greasing hole dimensions in the detailed view are reference values.



Unit : mm

Shaft Diameter	Model Number	Main Dimensions						Shoulder Height		Basic Load Rating (Radial)		Mass
		Inner Diameter $d$	Outer Diameter $D$	Width $T, T_1$	Greasing Hole		Chamfer $r_{min}$	$da$	$Dh$	$C$ kN	$C_0$ kN	kg
					$w$	$h$						
130	SRB13015	130	160	15	3.6	1.5	0.8	136	151	25	46.9	0.74
130	SRB13025	130	190	25	3.6	2.1	1.2	144	173	69.7	107.3	2.8
140	SRB14016	140	175	16	2.6	1.5	0.8	148	163	26	50.3	1.1
140	SRB14025	140	200	25	3.6	2.1	1.2	155	184	74.7	121	2.98
150	SRB15013	150	180	13	2.6	1.5	0.5	158	171	27.1	53.7	0.66
150	SRB15025	150	210	25	3.6	2.1	1.2	165	193	76.5	128	3.18
150	SRB15030	150	230	30	4.6	3.1	1.5	174	210	100	156	5.2
160	SRB16025	160	220	25	3.6	2.1	1.2	172	205	81.6	135	3.12
170	SRB17020	170	220	20	3.6	1.5	1.2	185	197	29.2	62	2.2
180	SRB18025	180	240	25	3.6	1.8	1.2	196	224	84.3	143	3.41
190	SRB19025	190	240	25	3.6	1.5	0.8	203	221	41.8	82.7	2.97
200	SRB20025	200	260	25	3.6	1.8	1.8	214	246	84.1	157	4.2
200	SRB20030	200	280	30	4.6	2.8	1.8	222	257	113	202	6.8
200	SRB20035	200	295	35	5.1	2.8	1.8	224	271	151	251	9.8
220	SRB22025	220	280	25	3.6	1.8	1.8	236	264	92.1	173	4
240	SRB24025	240	300	25	3.6	1.8	2.2	255	282	68.4	146	4.7
250	SRB25025	250	310	25	3.6	1.8	2.2	264	291	69.2	152	5.2

Note) (w) and (h) greasing hole dimensions in the detailed view are reference values.

# SRBE Model (One piece inner & outer ring)

## SRBE20030

Model number

## UU

Seal mark

If no mark is available : no seal  
 UU : seal on both sides  
 U : seal on either side

## S1

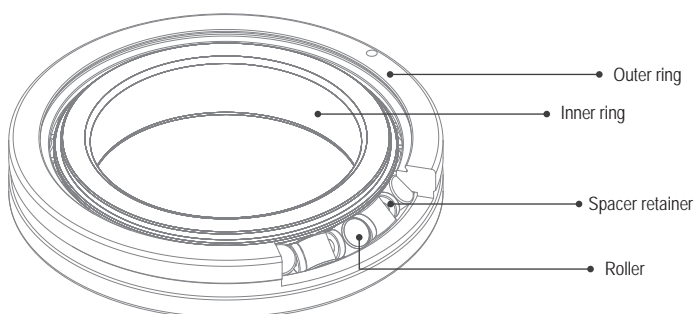
Radial clearance mark (P.19)

S1 : Preloaded (negative clearance)  
 C1 : No preload (positive clearance)

## P2

Accuracy mark (P.15)

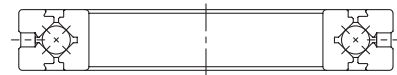
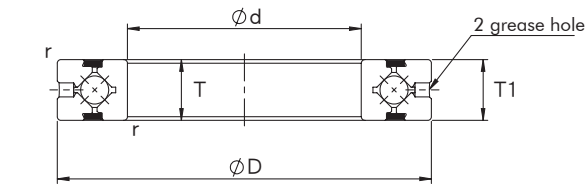
if no mark is available : ordinary grade (0 grade)  
 P5 : rotating accuracy grade 5  
 PS5 : rotating accuracy grade 5+size accuracy grade 5  
 P4 : rotating accuracy grade 4  
 PS4 : rotating accuracy grade 4+size accuracy grade 4  
 P2 : rotating accuracy grade 2  
 PS2 : rotating accuracy grade 2+size accuracy grade 2



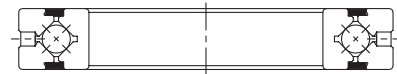
Unit : mm

Shaft Diameter	Model Number	Main Dimensions					Shoulder Height		Basic Load Rating (Radial)		Mass
		Inner Diameter d	Outer Diameter D	Width T, T <sub>1</sub>	Greasing Hole	Chamfer r <sub>min</sub>	da	Dh	C kN	C <sub>0</sub> kN	kg
20	SRBE2008	20	36	8	2-Φ2	0.5	24	30	3.2	3.1	0.06
25	SRBE2508	25	41	8	2-Φ2	0.5	29	35	3.6	3.8	0.07
30	SRBE3010	30	55	10	2-Φ2	0.6	37.5	46.5	7.4	8.4	0.14
35	SRBE3510	35	60	10	2-Φ2	0.6	41.5	51	7.6	9.1	0.12
40	SRBE4010	40	65	10	2-Φ2	0.6	47	58	8.3	10.8	0.18
45	SRBE4510	45	70	10	2-Φ2	0.6	51.5	61	8.6	11.1	0.15
50	SRBE5013	50	80	13	2-Φ3	0.6	57	72.5	16.6	20.7	0.28
60	SRBE6013	60	90	13	2-Φ3	0.6	67.5	82.5	18	24.1	0.32
70	SRBE7013	70	100	13	2-Φ3	0.6	78.5	91.5	19.5	27.9	0.37
80	SRBE8016	80	120	16	2-Φ3	0.8	91.5	110	30	42	0.72
90	SRBE9016	90	130	16	2-Φ3	1.0	98.8	117	31.3	45.1	0.77
100	SRBE10016	100	140	16	2-Φ3	1.0	110	128	31.8	48.8	0.82
100	SRBE10020	100	150	20	2-Φ3	1.0	117	132	33	51	1.47
110	SRBE11012	110	135	12	2-Φ3	0.6	118	126	12.6	24	0.42
110	SRBE11015	110	145	15	2-Φ3	0.6	123	135	23.8	41.8	0.76
110	SRBE11020	110	160	20	2-Φ3	1.0	121	139	34	54	1.58
120	SRBE12016	120	150	16	2-Φ3	0.8	128	140	24.3	43.4	0.74
120	SRBE12025	120	180	25	2-Φ3	1.5	134	163	66.8	100.2	2.62





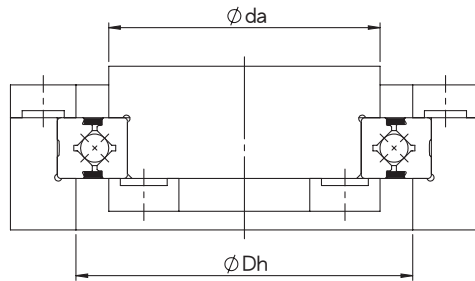
SRBE



SRBE-UU



SRBE-U



Unit : mm

Shaft Diameter	Model Number	Main Dimensions					Shoulder Height		Basic Load Rating <sup>(Radial)</sup>		Mass
		Inner Diameter $d$	Outer Diameter $D$	Width $T, T_1$	Greasing Hole	Chamfer $r_{min}$	$d_a$	$D_h$	$C$ kN	$C_0$ kN	kg
130	SRBE13015	130	160	15	2- $\phi 3$	0.8	136	151	25	46.9	0.74
130	SRBE13025	130	190	25	2- $\phi 3$	1.2	144	173	69.7	107.3	2.8
140	SRBE14016	140	175	16	2- $\phi 3$	0.8	148	163	26	50.3	1.1
140	SRBE14025	140	200	25	2- $\phi 3$	1.2	155	184	74.7	121	2.98
150	SRBE15013	150	180	13	2- $\phi 3$	0.5	158	171	27.1	53.7	0.66
150	SRBE15025	150	210	25	2- $\phi 3$	1.2	165	193	76.5	128	3.18
150	SRBE15030	150	230	30	2- $\phi 3$	1.5	174	210	100	156	5.2
160	SRBE16025	160	220	25	2- $\phi 3$	1.2	172	205	81.6	135	3.12
170	SRBE17020	170	220	20	2- $\phi 3$	1.2	185	197	29.2	62	2.2
180	SRBE18025	180	240	25	2- $\phi 3$	1.2	196	224	84.3	143	3.41
190	SRBE19025	190	240	25	2- $\phi 3$	0.8	203	221	41.8	82.7	2.97
200	SRBE20025	200	260	25	2- $\phi 3$	1.8	214	246	84.1	157	4.2
200	SRBE20030	200	280	30	2- $\phi 3$	1.8	222	257	113	202	6.8
200	SRBE20035	200	295	35	2- $\phi 3$	1.8	224	271	151	251	9.8
220	SRBE22025	220	280	25	2- $\phi 3$	1.8	236	264	92.1	173	4
240	SRBE24025	240	300	25	2- $\phi 3$	2.2	255	282	68.4	146	4.7
250	SRBE25025	250	310	25	2- $\phi 3$	2.2	264	291	69.2	152	5.2

# SRAU Model (One piece inner & outer ring)

## SRAU8008

Model number

## UU

Seal mark

If no mark is available: no seal  
 UU : seal on both sides  
 U : seal on either side

## S1

Radial clearance mark (P.19)

S1 : Preloaded (negative clearance)  
 C1 : No preload (positive clearance)

## P5

Accuracy mark (P.16)

If no mark is available: ordinary grade (0 grade)  
 P6 : rotating accuracy grade 6  
 P5 : rotating accuracy grade 5  
 P4 : rotating accuracy grade 4

## B

Accuracy symbol

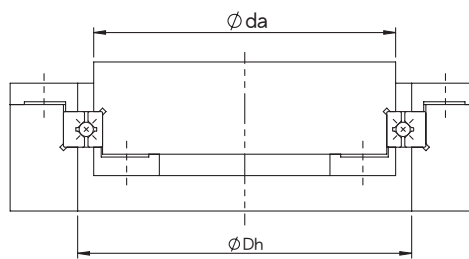
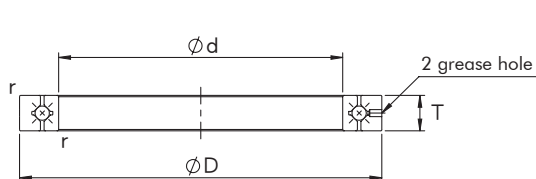
If no mark is available: inner ring rotational accuracy  
 R : outer ring rotational accuracy  
 B : inner & outer ring rotational accuracy

\*Note :SRAU width 5mm Type

1.Seals are not available

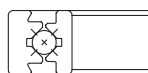
2.Only available with C1 radial clearance ,S1 is not available .

Width:5mm



Unit : mm

Shaft Diameter	Model Number	Main Dimensions						Shoulder Height		Basic Load Rating (Radial)		Mass
		ID d	OD D	Pitch Circle Diameter dw	Width T	Greasing Hole d <sub>o</sub>	Chamfer r <sub>min</sub>	da	Dh	C kN	C <sub>0</sub> kN	kg
10	SRAU1005	10	21	14.7	5	1	0.15	12.5	17	1.12	0.809	0.009
15	SRAU1505	15	26	19.7	5	1	0.15	17.5	22	1.32	1.1	0.012
20	SRAU2005	20	31	24.7	5	1	0.15	22.5	27	1.49	1.4	0.015
30	SRAU3005	30	41	34.7	5	1	0.15	32.5	37	1.89	2.14	0.021
40	SRAU4005	40	51	44.7	5	1	0.15	42.5	47	2.14	2.74	0.027
50	SRAU5005	50	61	54.7	5	1	0.15	52.5	57	2.43	3.49	0.032
60	SRAU6005	60	71	64.7	5	1	0.15	62.5	67	2.63	4.09	0.038
70	SRAU7005	70	81	74.7	5	1	0.15	72.5	77	2.81	4.68	0.044
80	SRAU8005	80	91	84.7	5	1	0.15	82.5	87	3.05	5.43	0.5
90	SRAU9005	90	101	94.7	5	1	0.15	92.5	97	3.19	6.03	0.056
100	SRAU10005	100	111	104.7	5	1	0.15	102.5	107	3.37	6.63	0.061

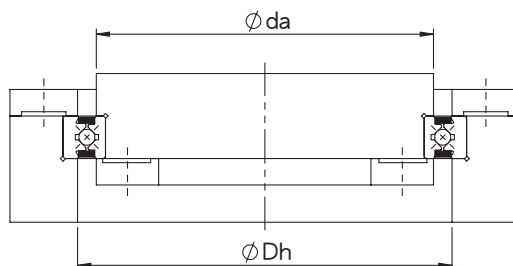
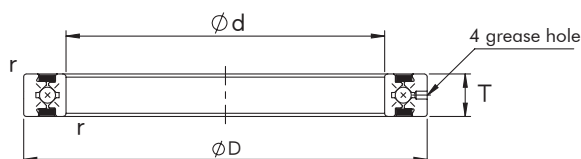


SRAU



SRAU-UU

Width:8mm.13mm



Unit : mm

Shaft Diameter	Model Number	Main Dimensions						Shoulder Height		Basic Load Rating (Radial)		Mass
		ID d	OD D	Pitch Circle Diameter dw	Width T	Greasing Hole do	Chamfer r <sub>min</sub>	da	Dh	C kN	C <sub>0</sub> kN	kg
50	SRAU5008	50	66	57	8	1.5	0.5	53.5	60.5	5.1	7.19	0.08
60	SRAU6008	60	76	67	8	1.5	0.5	63.5	70.5	5.68	8.68	0.09
70	SRAU7008	70	86	77	8	1.5	0.5	73.5	80.5	5.98	9.8	0.1
80	SRAU8008	80	96	87	8	1.5	0.5	83.5	90.5	6.37	11.3	0.11
90	SRAU9008	90	106	97	8	1.5	0.5	93.5	100.5	6.76	12.4	0.12
100	SRAU10008	100	116	107	8	1.5	0.5	103.5	110.5	7.15	13.9	0.14
110	SRAU11008	110	126	117	8	1.5	0.5	113.5	120.5	7.45	15	0.15
120	SRAU12008	120	136	127	8	1.5	0.5	123.5	130.5	7.84	16.5	0.17
130	SRAU13008	130	146	137	8	1.5	0.5	133.5	140.5	7.94	17.6	0.18
140	SRAU14008	140	156	147	8	1.5	0.5	143.5	150.5	8.33	19.1	0.19
150	SRAU15008	150	166	157	8	1.5	0.5	153.5	160.5	8.82	20.6	0.2
160	SRAU16013	160	186	172	13	2	0.8	165	179	23.3	44.9	0.59
170	SRAU17013	170	196	182	13	2	0.8	175	189	23.5	46.5	0.64
180	SRAU18013	180	206	192	13	2	0.8	185	199	24.5	49.8	0.68
190	SRAU19013	190	216	202	13	2	0.8	195	209	24.9	51.5	0.69
200	SRAU20013	200	226	212	13	2	0.8	205	219	25.8	54.5	0.71

# SRAUF Model(One piece inner & outer ring )

## SRAUF2005

Model number

## S1

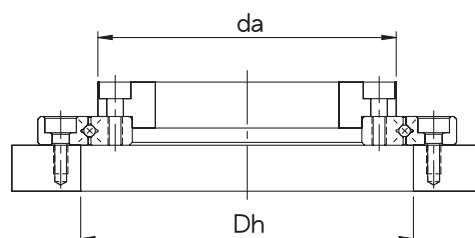
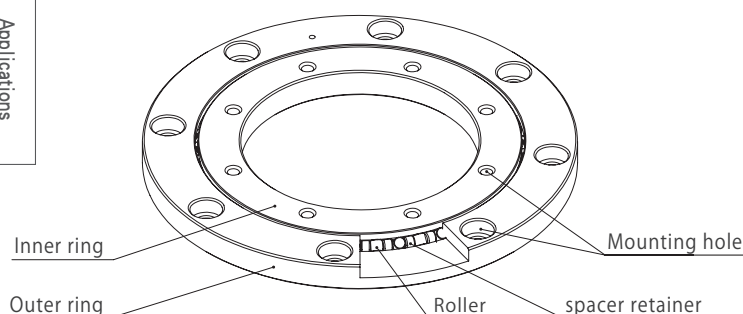
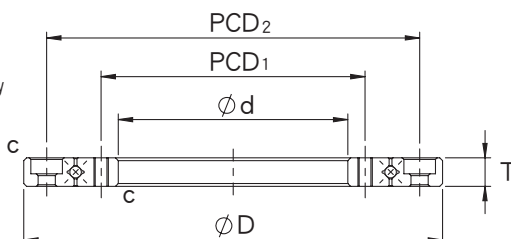
Radial clearance mark (P.18)

S1 : Preloaded (negative clearance)  
C1 : No preload (positive clearance)

## P5

Accuracy mark (P.18)

if no mark is available: ordinary  
grade (0 grade)  
P6 : rotating accuracy grade 6  
P5 : rotating accuracy grade 5  
P4 : rotating accuracy grade 4



Unit : mm

Shaft Diameter	Model Number	Main Dimensions				Shoulder Height		Basic Load Rating (Radial)		Mass
		Inner Diameter $d$	Outer Diameter $D$	Width $T$	Chamfer $C_{min}$	$da$	$Dh$	$C$ kN	$C_0$ kN	kg
10	SRAUF1005	10	43	5	0.15	21.5	28	1.50	1.41	0.046
20	SRAUF2005	20	53	5	0.15	31.5	38	1.89	2.15	0.066
30	SRAUF3005	30	63	5	0.15	41.5	47.5	2.14	2.75	0.083
40	SRAUF4005	40	73	5	0.15	51.5	58	2.44	3.49	0.103

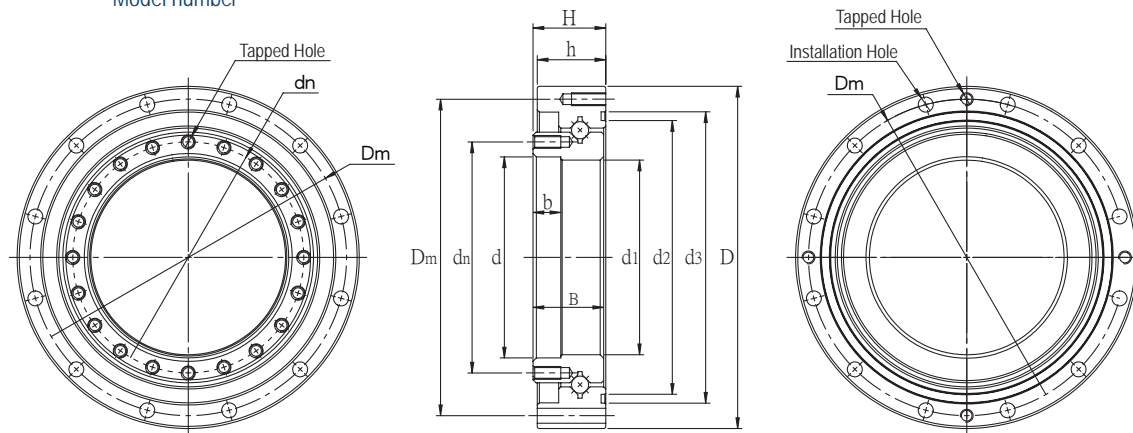
## Mounting Hole Specification

Inner Ring			Outer Ring	
PCD1	Mounting Hole		PCD2	Mounting Hole
10	6-M2.5 Through		35	6- $\phi$ 2.9 through , $\phi$ 5.5 Counterbore depth 2.8
20	6-M2.5 Through		45	6- $\phi$ 2.9 through , $\phi$ 5.5 Counterbore depth 2.8
30	8-M2.5 Through		55	8- $\phi$ 2.9 through , $\phi$ 5.5 Counterbore depth 2.8
40	8-M2.5 Through		65	8- $\phi$ 2.9 through , $\phi$ 5.5 Counterbore depth 2.8

## SSHF Model (One piece inner &amp; outer ring)

## SSHF14

Model number



Unit : mm

Model Number	Main Dimensions								
	D	d	d1	d2	d3	H	h	B	b
SSHF14	70	38	36	53	57	15.1	14.1	14.7	5
SSHF17	80	47	45.5	64	68.1	17	16	16.5	6.5
SSHF20	90	54	51.3	72.6	78	18.5	17.5	17.5	7
SSHF25	110	67	64.2	90	94.8	20.7	19.7	19.7	7.5
SSHF32	142	88	84	117.5	123	24.4	23.4	22.9	8

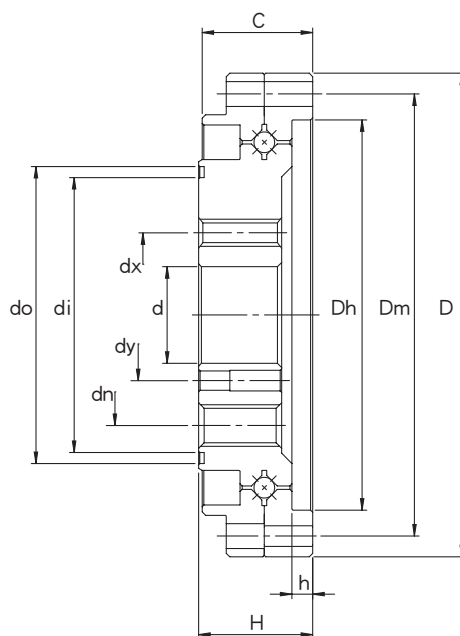
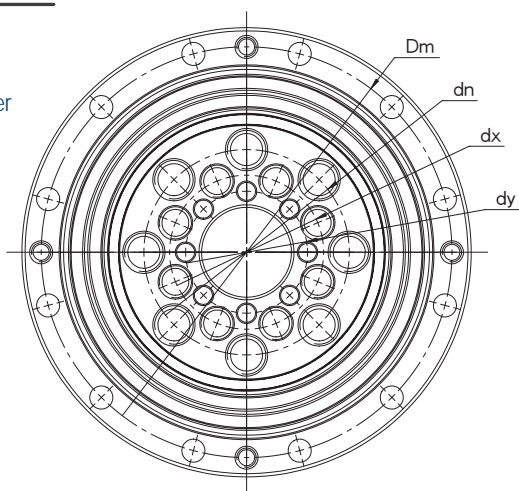
Unit : mm

Model Number	Installation Hole Dimension (PCD&PEC)					Basic Load Rating (Radial)		Mass
	Outer Ring			Inner Ring		C kN	Co kN	kg
	Dm	Installation Hole	Tapped Hole	dn	Tapped Hole			
SSHF14	64	8-Φ3.5	2-M3	44	12-M3	10.34	13.82	0.1
SSHF17	74	12-Φ3.5	4-M3	54	20-M3	10.07	14.12	0.34
SSHF20	84	12-Φ3.5	4-M3	62	4-M3 16-M3	20.73	28.01	0.45
SSHF25	102	12-Φ4.5	4-M3	77	4-M3 16-M4	23.22	34.64	0.7
SSHF32	132	12-Φ5.5	4-M4	100	8-M4 16-M5	40.81	64.07	1.55

## SCSG Model (Split outer ring)

**SCSG14**

Model number



Unit : mm

Model Number	Main Dimensions								Basic Load Rating (Radial)		Mass
	D	Dh	d	do	di	H	h	C	C kN	Co kN	kg
SCSG14	55	41.8	11	29.7	28.3	16.5	2.5	16	4.88	5.68	0.13
SCSG17	62	49	10	36	33.8	16.5	2.7	16	5.46	7.02	0.22
SCSG20	70	56.5	14	43	39.8	16.5	3	16	6.67	9.66	0.2
SCSG25	85	68	20	55.4	52.5	18.5	2	18	10.3	14.76	0.45
SCSG32	112	90	26	74.1	68.4	22.5	3	21.5	22.6	32.97	0.88

Unit : mm

Model Number	Installation Hole Size (PCD&PEC)							
	Outer Ring		Inner Ring					
	Dm	Installation Hole	dn	Tapped Hole	dx	Tapped Hole	dy	Hole Size
SCSG14	49	8-Φ3.5	23	6-M4	17	6-M4	15	6-Φ2.5
SCSG17	56	10-Φ3.5	27	6-M5	19	6-M5	15	6-Φ3
SCSG20	64	12-Φ3.5	32	8-M6	24	8-M5	19	8-Φ3
SCSG25	79	16-Φ3.5	42	8-M8	30	8-M6	26	8-Φ3
SCSG32	104	16-Φ4.5	55	8-M10	40	8-M8	34	4-Φ5

## A large, light blue, stylized graphic of a heart or a drop shape, tilted diagonally, centered on a white background with faint horizontal lines. The shape is composed of two overlapping, curved strokes, giving it a sense of motion or a calligraphic feel. It is positioned in the center of the page, spanning across several of the horizontal lines.

## A large, light blue, stylized graphic of a lowercase letter 'e' is centered on a white background with horizontal grey lines. The 'e' is formed by a thick, continuous stroke that loops around, with a small gap at the top right. The graphic is semi-transparent, allowing the lines of the background to be visible through it.



A large, light blue, stylized swoosh or wave graphic that curves around the central text.

# 02

**Gonio Way**

## Gonio way

---

SFT Gonio Way is a non-circulating, curved cross roller slide way, and the precision rollers that have extremely low friction resistance provide a stable arc movement. They are mainly used in high-precision positioning where rotation centers remain unchanged and accurate tilting angles are required. They are widely used to meet the purposes of optical instruments and measuring devices.

### Product features

---

- High rigidity and load capacity
- Same rotation centers
- Low friction and accurate movement
- Easy installation
- Low noise



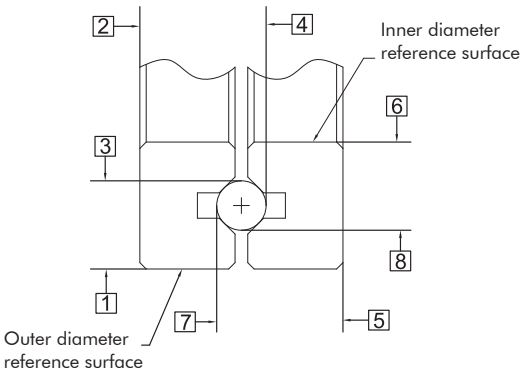
# Accuracy

SFT Gonio Way accuracy is measured by the method shown in the following figure which measures the mutual dimensional deviations of the four rails along their full length.

## Accuracy measurement method

Unit : μm	
Model Number	Accuracy
SRV0240-50	10
SRV0260-60	
SRV0370-90	
SRV0370-110	
SRV03100-160	

Unit : μm	
Model Number	Accuracy
SCRV0240-51	10
SCRV0240-70	
SCRV0240-89.5	
SCRV0260-65	
SCRV0260-89	
SCRV0260-113.5	
SCRV0260-138.5	



## Rated life

The rated life of SFT Gonio Ways is calculated using the following formula.

$L_f$  : Rated Life ( $10^6$  cycle)

$\theta$  : Rotational angle (degree)

$C$  : Basic dynamic load rating (N)

$F$  : Applied load (N)

$f_t$  : Temperature coefficient

$f_L$  : Applied load coefficient

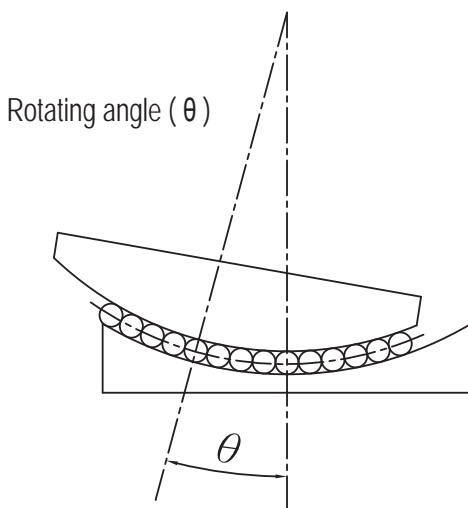
$$L_f = \frac{90}{\theta} \times \left( \frac{f_t}{f_L} \times \frac{C}{F} \right)^{\frac{10}{3}}$$

## Life time

$L_t$ : life time (hr)

$r$  : number of rotation per minute (rpm)

$$L_t = \frac{L_f \times 10^6}{60 \times r}$$



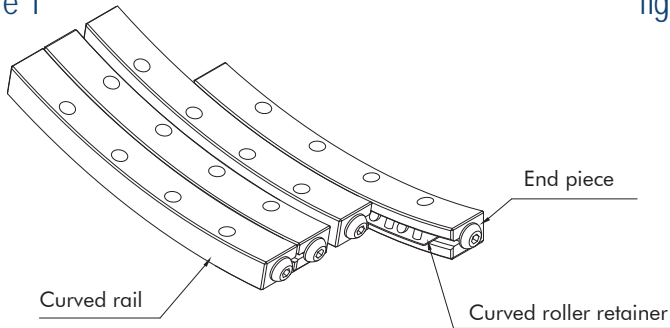
## Usage precautions

- **Lubrication :**  
Use lithium soap based lubricating grease.
- **Retainer Deviation :**  
Retainers will deviate from their correct positions when SFT Gonio Way are used under conditions such as high-speed, vibrations and unbalanced loads. To minimize this deviation, maintain additional travel distance, avoid excessive pre-load and cycle the rails to return the cage to its central position.
- **Dust prevention :**  
SFT Gonio ways may not realize their ideal performance due to dust or foreign objects likely to enter the interior depending on operating environment; it is recommended to protect SFT Gonio Way by using external dustproof covers if they are to be used in extreme environments.
- **End Pieces :**  
End pieces are installed to the end the SFT Gonio Way to prevent the roller cage from falling off the track.
- **Working Environment :**  
It is recommended to operate SFT Gonio ways with temperature range from -20°C to 110°C.
- **Paired Usage :**  
SFT Gonio Way accuracy is based on a complete set in order to realize a precise control. Combining different Gonio ways sets will affect accuracy; please exercise caution when assembling SFT Gonio Ways.
- **Adjustments :**  
Inaccurate installation on the mounting surface or improper preload adjustment will reduce motion accuracy; thus causing the rail to skew and reduce performance and service life; exercise extreme caution during adjustment.
- **Allowable Load :**  
Allowable load is defined as a guaranteed smooth roller movement under which a small enough total elastic deformation of the rolling element and the raceway in the contact area that receives maximum-contact stress. Please use the product within the allowable load to ensure high accuracy and smooth-motion.

## Gonio way structure

SRV models (figure 1.) of SFT Gonio Ways are made up of precisely ground V-shaped track and curved roller cages

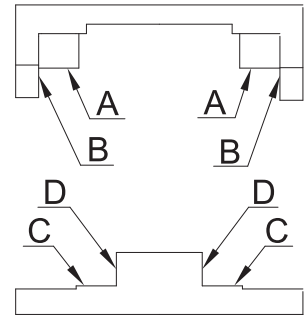
figure 1



## Installing gonio ways

Accuracy of the mounting surface  
As shown in (figure 2), the accuracy of surfaces A-D will directly affect the motion accuracy.

figure 2



## Installation sequence

1. Thoroughly clean the slideways and the mounting surface on the table to prevent the entry of foreign objects during installation.
2. Apply lube oil with low viscosity onto each mounting surface and lock gonio ways a, b, c and each surface using the suggested torque (figure 3-1).
3. Temporarily lock gonio way d (figure 3-2).
4. Remove the end pieces from one end and insert the curved roller cages to the central position of the gonio way; upon the completion, re-attach the end pieces to its original position. (figure 3-3).
5. Move the table horizontally to its maximum traveling end and adjust the curved roller cage to its central position.

## Figure 3 Installation method

figure 3-1

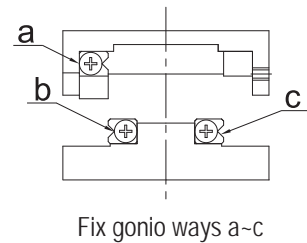


figure 3-2

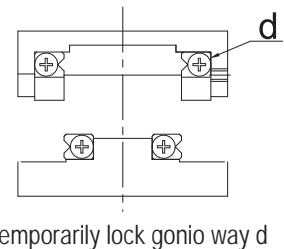
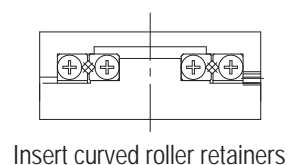
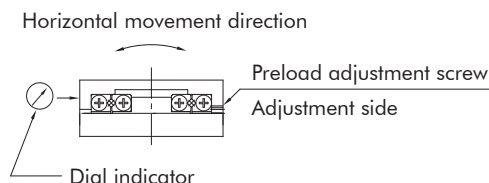


figure 3-3



6. Install a dial gauge at the side of the slideway base level as reference. (figure 3-4).

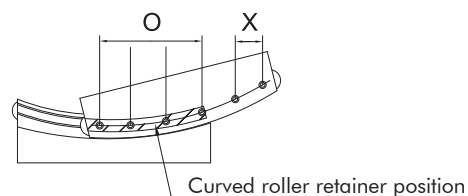
figure 3-4



7. Move the slideway to one travel end and slightly lock adjustment screw above the curved roller cage. (figure 3-5).

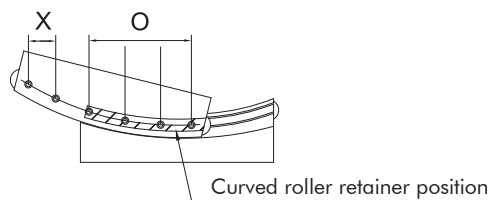
figure 3-5

○: adjustment screw can be tightened.  
×: adjustment screw may not be tightened.



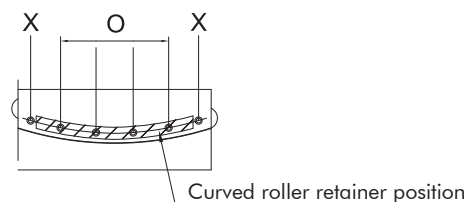
8. Move the sliding way fully to the other end and slightly lock adjustment screw. (figure 3-6).

figure 3-6



9. Move the slideway to the central position and slightly lock the adjustment screw at the central position (figure 3-7).

figure 3-7

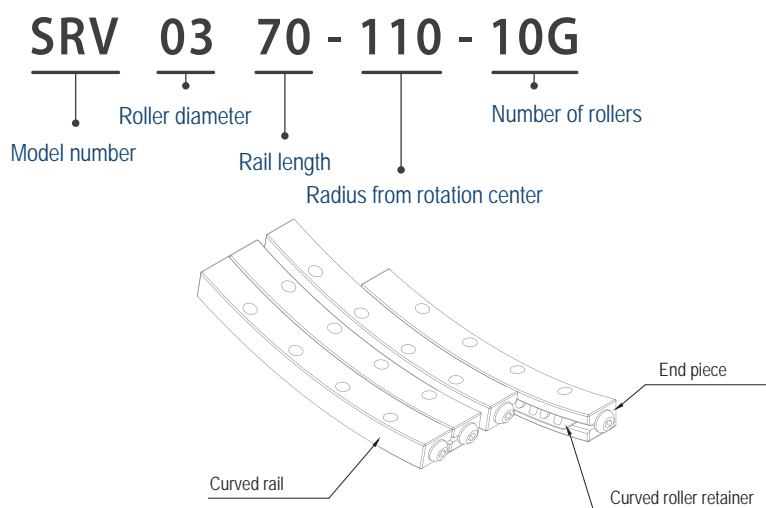


10. Repeat steps from (7) to (9) until there is no clearance with dial gauge showing minimum variation. Caution against applying excessive preloads

11. Once there is no clearance in the horizontal direction; carry out final preload calibration by repeating operations from (7) to (9) using the recommended torque force for locking screws.

12. Tighten the gonio way d (figure 3-2) by tightening the mounting screws sequentially in the same way as the adjustment screws.

## SRV Model



◆ One set contains 4 rails, 2 curved roller retainers and 8 end pieces.

unit: mm

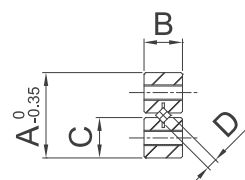
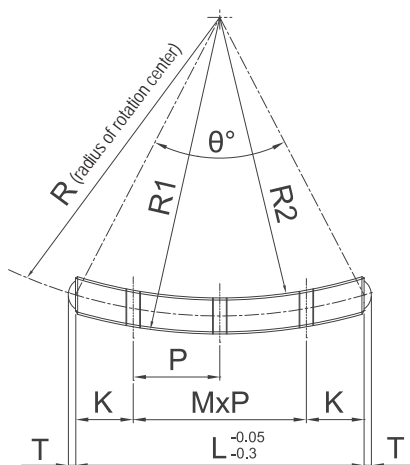
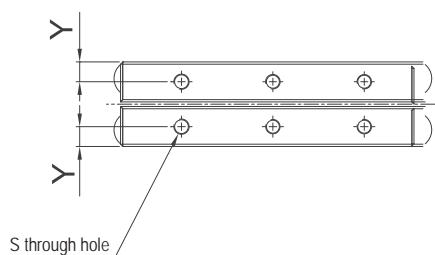
Model Number	Rotation range	Roller diameter (D)	Roller quantity (G)	Main dimensions						
				L	R	R1	R2	A	B	C
SRV0240-50-7G	±10°	2	7	40	50	53	47	15	6	7.25
SRV0260-60-12G	±10°	2	12	60	60	63	57	15	6	7.25
SRV0370-90-11G	±10°	3	11	70	90	94	86	18	8	8.5
SRV0370-110-10G	±10°	3	10	70	110	114	106	18	8	8.5
SRV03100-160-14G	±10°	3	14	100	160	164	156	18	8	8.5

unit: mm

Model Number	Weight per set (g)	Allowable load (F)(N)	Basic load rating		$\theta^\circ$	T	S	Y	K	MxP
			Static (C <sub>0</sub> )(N)	Dynamic (C)(N)						
SRV0240-50-7G	47	480	1420	800	47.1°	1.5	M3	2.5	7.5	2x12.5
SRV0260-60-12G	78	930	2870	1430	59.9°	1.5	M3	2.5	11.25	3x12.5
SRV0370-90-11G	135	1820	5480	2620	45.7°	1.9	M3	3	12.5	3x15
SRV0370-110-10G	131	1800	5600	2420	37°	1.9	M3	3	12.5	3x15
SRV03100-160-14G	191	2600	7870	2480	36.3°	1.9	M3	3	12.5	5x15



# SCRV Model



unit: mm

Model Number	Rotation range	Roller diameter (D)	Roller quantity (G)	Main dimensions						
				L	R	R1	R2	A	B	C
SCRV0240-51-7G	±8°	2	7	40	51	53.5	48.5	11.3	5	5.25
SCRV0240-70-7G	±6°	2	7	40	70	72.5	67.5	11.3	5	5.25
SCRV0240-89.5-7G	±5°	2	7	40	89.5	92	87	11.3	5	5.25
SCRV0260-65-11G	±8°	2	11	60	65	68	62	16	6	7.6
SCRV0260-89-11G	±8°	2	11	60	89	92	86	16	6	7.6
SCRV0260-113.5-11G	±6°	2	11	60	113.5	116.5	110.5	16	6	7.6
SCRV0260-138.5-9G	±5°	2	9	60	138.5	141.5	135.5	16	6	7.6

unit: mm

Model Number	Weight per set (g)	Allowable load (F)(N)	Basic load rating		θ°	T	S	Y	K	MxP
			Static (C <sub>0</sub> )(N)	Dynamic (C)(N)						
SCRV0240-51-7G	29	480	1420	800	46.2°	1.5	M2	2.0	8	2x12
SCRV0240-70-7G	29	480	1420	800	33.2°	1.5	M2	2.0	8	2x12
SCRV0240-89.5-7G	29	480	1420	800	25.8°	1.5	M2	2.0	8	2x12
SCRV0260-65-11G	79	853	2629	1320	55°	1.5	M3	2.5	11.25	3x12.5
SCRV0260-89-11G	77	853	2629	1320	39.4°	1.5	M3	2.5	11.25	3x12.5
SCRV0260-113.5-11G	77	853	2629	1320	30.7°	1.5	M3	2.5	11.25	3x12.5
SCRV0260-138.5-9G	77	853	2629	1320	25 °	1.5	M3	2.5	11.25	3x12.5

## A large, light blue, stylized letter 'S' or 'Z' shape, tilted diagonally, serving as a background graphic for the lined paper. The shape is composed of two overlapping, curved bands that form a continuous loop, resembling a calligraphic flourish or a modern logo element. It is positioned in the lower-left to middle-right area of the page, partially obscuring the horizontal lines.

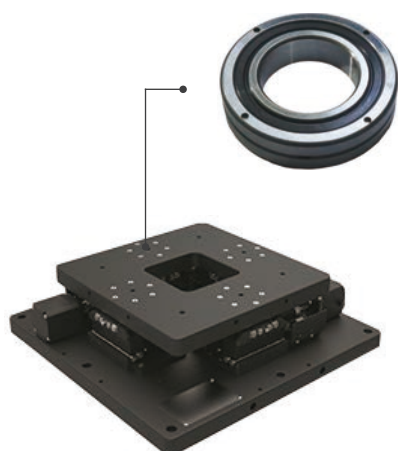
A large, light blue, stylized swoosh or wave graphic that curves from the bottom left towards the top right, passing behind the text.

# 03

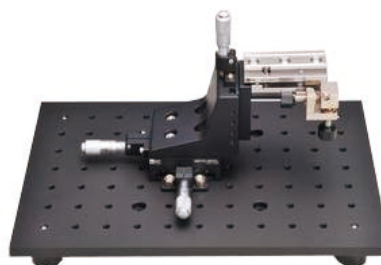
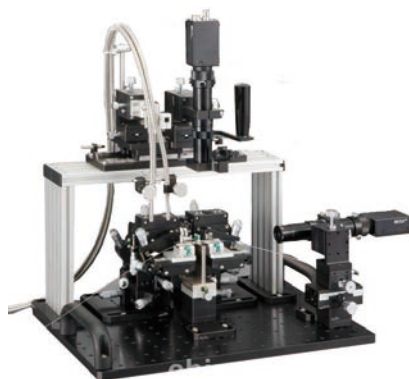
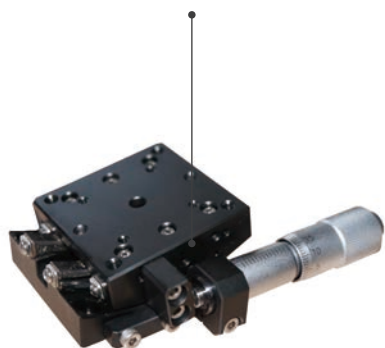
## **Applications**

# Application examples

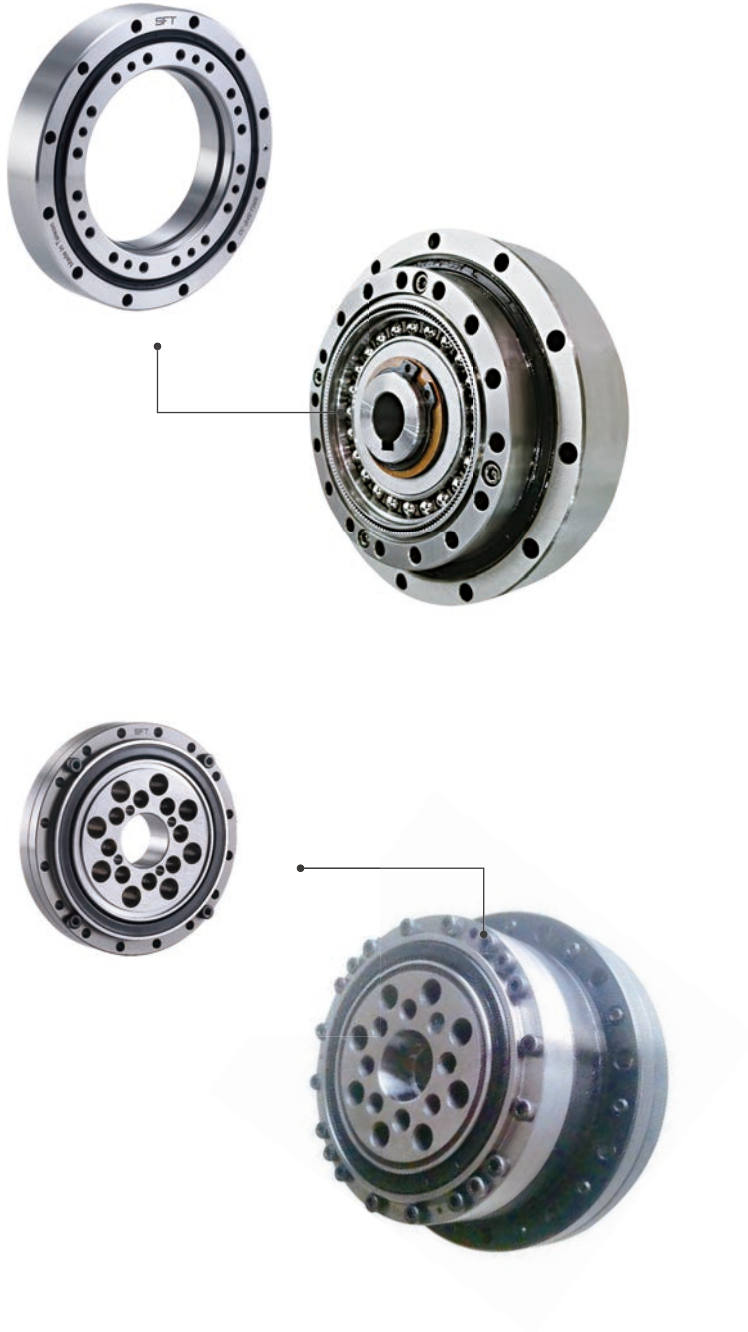
## Cross roller bearings



## Gonio ways



## Strain wave gear cross roller bearings



## A large, light blue, stylized graphic of a heart or a drop shape, tilted diagonally, centered on a white background with faint horizontal lines. The shape is composed of two overlapping, curved strokes, creating a sense of movement and fluidity. It is positioned in the center of the page, with its top pointing towards the upper right and its bottom towards the lower left. The background features faint, horizontal grey lines, suggesting a notebook or a writing surface. The overall aesthetic is clean, modern, and minimalist.

## A large, light blue, stylized graphic of a lowercase letter 'e' is centered on a white background with horizontal grey lines. The 'e' is formed by a thick, continuous stroke that curves around to form a loop. The graphic is semi-transparent, allowing the lines of the background to be visible through it.