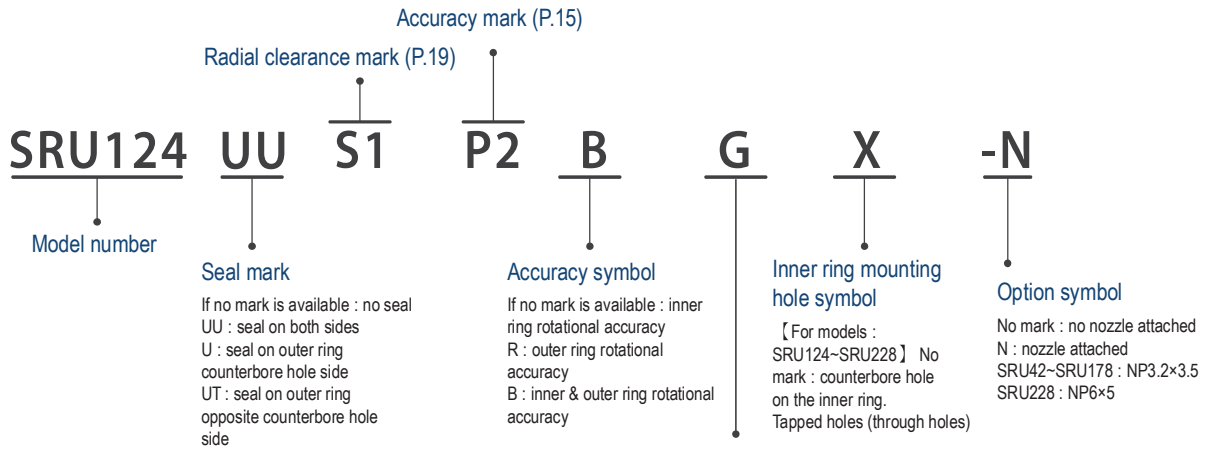
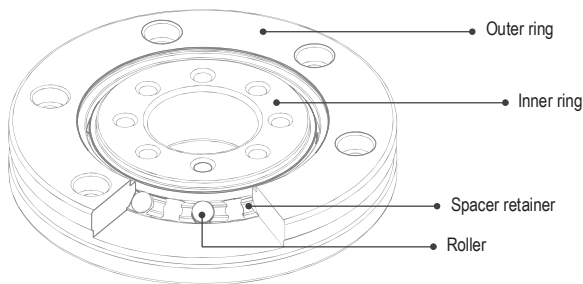


SRU (One piece inner & outer ring)



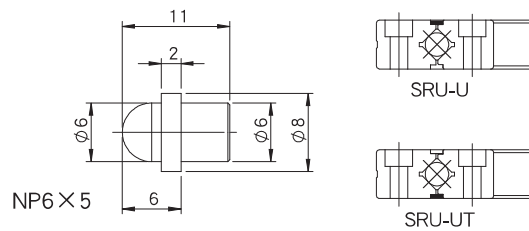
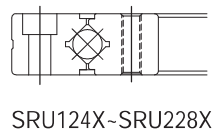
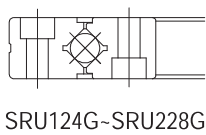
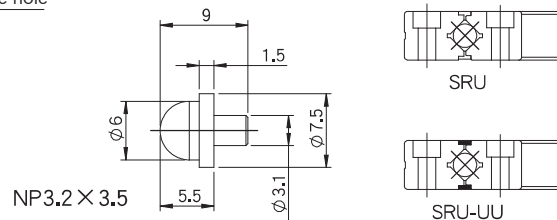
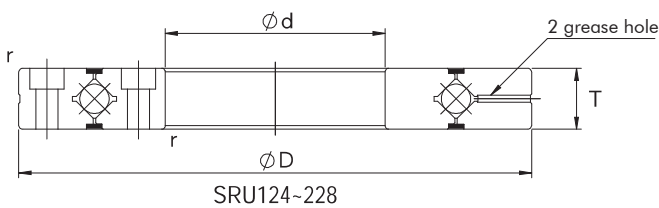
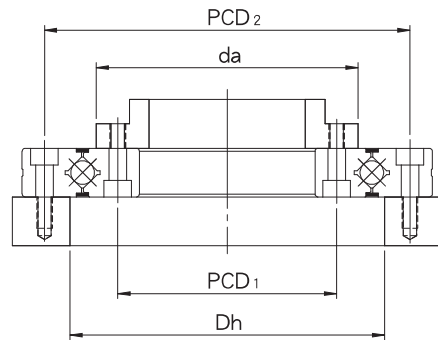
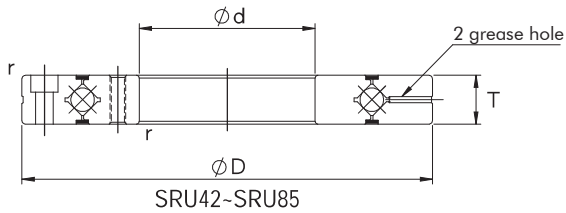
Mounting hole orientation

[For models : SRU124~SRU228 (except X models)]
No mark : the counterbore holes on inner and outer rings are in the same direction
G : The counterbore holes on inner and outer rings are in reverse direction



Unit : mm

Shaft Diameter	Model Number	Main Dimensions					Shoulder Height		Basic Load Rating <small>(Radial)</small>		Mass
		Inner Diameter d	Outer Diameter D	Width T	Greasing Hole d1	Chamfer r_{min}	da	Dh	C kN	C₀ kN	kg
20	SRU42	20	70	12	3	0.5	36	46	7.3	8.33	0.28
35	SRU66	35	95	15	3	0.5	58	75	17.53	22.31	0.6
55	SRU85	55	120	15	3	0.5	78	94	20.31	29.55	1.1
80	SRU124(G) SRU124X	80	165	22	3	1	115	133	33	50.85	2.61
90	SRU148(G) SRU148X	90	210	25	3	1.5	134	161	49	76.83	4.95
115	SRU178(G) SRU178X	115	240	28	3	1.5	162	194	80.32	134.9	6.78
160	SRU228(G) SRU228X	160	295	35	6.1	2	207	247	103.5	172.8	10.5



Mounting Hole Specification			
Inner Ring		Outer Ring	
PCD1	Mounting Hole	PCD2	Mounting Hole
28	6-M3 Through	57	6-Ø3.5 Through , Ø6.5 hole depth 3.5
45	8-M4 Through	83	8-Ø4.5 Through , Ø8 hole depth 4.5
65	8-M5 Through	105	8-Ø5.5 Through , Ø10 hole depth 5.5
97	10-Ø5.5 Through , Ø10 hole depth 5.5 10-M5 Through	148	10-Ø5.5 Through , Ø10 hole depth 5.5
112	12-Ø9.0 Through , Ø14 hole depth 8.5 12-M8 Through	187	12-Ø9.0 Through , Ø14 hole depth 8.5
139	12-Ø9.0 Through , Ø14 hole depth 8.5 12-M8 Through	217	12-Ø9.0 Through , Ø14 hole depth 8.5
184	12-Ø11 Through , Ø18 hole depth 10.8 12-M10 Through	270	12-Ø11 Through , Ø18 hole depth 10.8