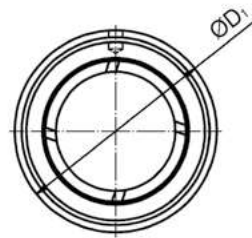
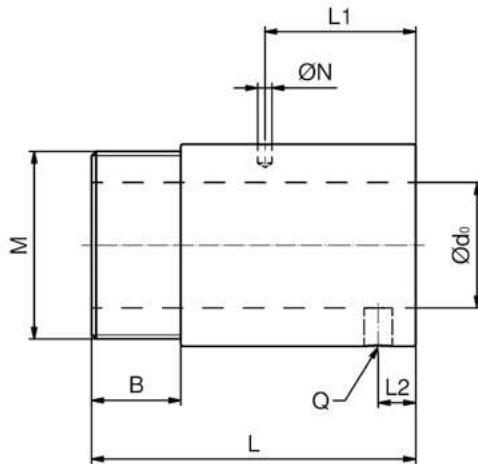
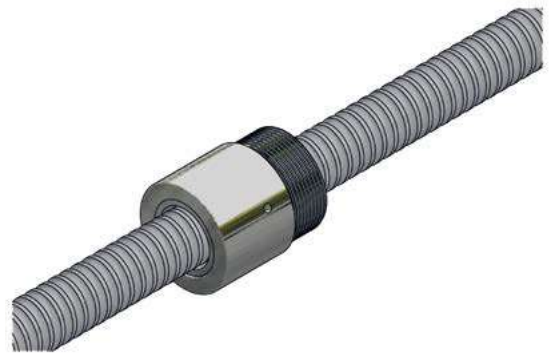


5.2.7 Cylindrical screw-in nut type SH



Type	Pitch direction	d ₀ [mm]	P [mm]	D _w [mm]	D ₁ [mm]	M [mm]	Dimension						Number of circuits	Load ratings		Rigidity K _N [N/μm]
							B [mm]	L ±0,15 [mm]	L1 [mm]	N [mm]	L2 [mm]	Q		C _a [kN]	C _{0a} [kN]	
BNU00802.5_SH_2,5	right	8	2,5	1,200	17,5	M15x1	7,5	23,5	10,00	3,0	-	-	2,5 x 1	1,67	3,36	108
BNU01002_SH_3,5	right	10	2	1,200	19,5	M17x1	7,5	22,0	3,00	3,2	-	-	3,5 x 1	2,44	5,86	167
BNU01004_SH_2,5	right	10	4	2,000	25,0	M20x1	10,0	34,0	3,00	3,0	-	-	2,5 x 1	3,53	6,66	137
BNU01204_SH_3,5	right	12	4	2,500	25,5	M20x1	10,0	34,0	13,00	3,0	4	M6	3,5 x 1	7,10	14,55	226
BNU01205_SH_3,5	right	12	5	2,500	25,5	M20x1	10,0	39,0	16,25	3,0	-	-	3,5 x 1	7,07	14,51	235
BNU01404_SH_3,5	right	14	4	2,381	32,1	M25x1,5	10,0	35,0	13,00	3,0	4	M6	3,5 x 1	6,60	14,20	255
BNU01604_SH_3	right	16	4	2,381	29,0	M22x1,5	8,0	32,0	4,00	3,2	4	M6	3 x 1	6,61	15,91	235
BNU01605_SH_3	right	16	5	3,175	32,5	M26x1,5	12,0	42,0	19,25	3,0	4	M6	3 x 1	9,50	20,20	245
BNU02005_SH_3	right	20	5	3,175	38,0	M35x1,5	15,0	45,0	20,30	3,0	4	M6	3 x 1	10,69	25,64	294
BNU02505_SH_4	right	25	5	3,175	43,0	M40x1,5	19,0	69,0	32,11	3,0	8	M6	4 x 1	15,22	43,29	363