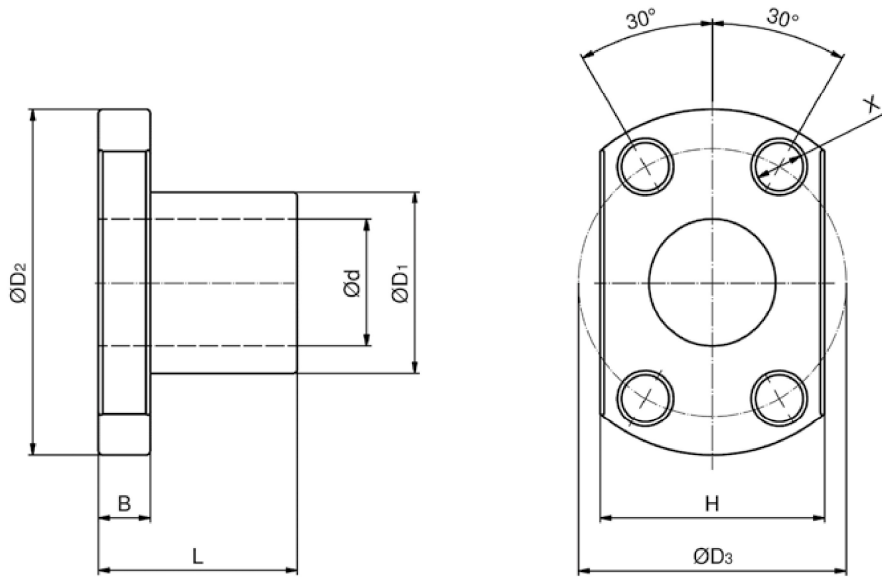


5.2.8 Miniature single nut type SK



Type	Pitch direction	Dimension										Number of circuits	Load ratings		Rigidity K_N [N/ μ m]
		d [mm]	P [mm]	D_w [mm]	D_1 g6 [mm]	D_2 [mm]	B [mm]	L [mm]	D_3 [mm]	$H \pm 0,10$ [mm]	X [mm]		C_a [kN]	C_{0a} [kN]	
BNU00601_SK_3	right	6	1	0,800	12	24	3,5	15	18	16	3,4	1 x 3	0,97	1,97	88
BNU00801_SK_4	right	8	1	0,800	14	27	4,0	16	21	18	3,4	1 x 4	1,42	3,56	137
BNU00802_SK_3	right	8	2	1,200	14	27	4,0	16	21	18	3,4	1 x 3	1,96	4,04	127
BNU00802.5_SK_3	right	8	2,5	1,200	16	29	4,0	26	23	20	3,4	1 x 3	1,95	4,03	127
BNU01002_SK_3	right	10	2	1,200	18	35	5,0	28	27	22	4,5	1 x 3	2,15	5,02	147
BNU01004_SK_3	right	10	4	2,000	26	46	10,0	34	36	28	4,5	1 x 3	4,13	7,99	167
BNU01202_SK_4	right	12	2	1,200	20	37	5,0	28	29	24	4,5	1 x 4	2,95	7,99	216
BNU01204_SK_3	right	12	4	2,500	24	40	6,0	33	32	25	3,5	1 x 3	6,21	12,46	255
BNU01205_SK_3	right	12	5	2,500	22	37	8,0	39	29	24	4,5	1 x 3	6,19	12,43	186
BNU01402_SK_4	right	14	2	1,200	21	40	6,0	23	31	26	5,5	1 x 4	3,13	9,30	235