

EZD 51, EZD 52 // Rack & pinion units 500 N



- Rack & pinion units for actuation of lightweight panels.
- Split steel rack & pinion units in revolutionary new design for roof or side vents in all kinds of greenhouses, e.g. open roof houses.
- Interlocking two-piece steel pinion. Push-to-lock plastic housing works as bearing and sliding block for rack.
- Racks available in various lengths, straight or curved. Made from galvanized steel, 3 mm wall thickness. Load 500 N = 115 lbf.
- Quicker installation due to unique design.
- Quicker replacement without disassembly of drive shaft.
- Compatible with standard steel rack + pinion.
- Also available as EZD 51 in cost effective one-piece design.
- Also available as 5/4".

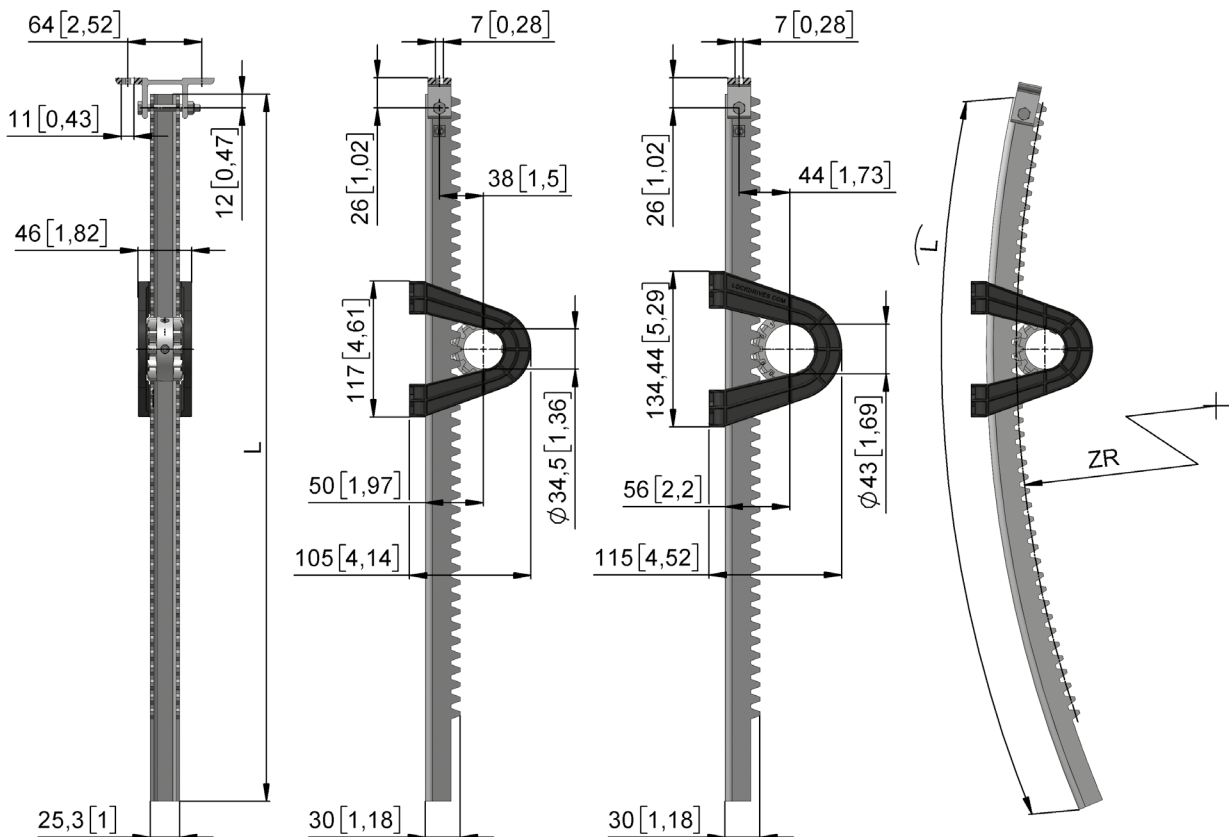
Note:

- Gear unit suitable for straight as well as curved racks.
- Tighten down clamping ring screws to 12 Nm.
- Patent pending!
- Take a look at the video animation on our website.



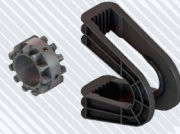
Drive tube 1"
(Outer diameter
33,7 mm [1.315"])

Drive tube 5/4"
(Outer diameter
42,4 mm [1.66"])



EZD 51 // Gear unit

500 N // one-piece pinion



Version	Type no.	F [N]	v [mm/n]	r [mm]	m [kg]	ø tube [mm]
EZD 51.0501	61551.0501.00	500	138	22	0,4	1"

EZD 52 // Gear unit

500 N // two-piece pinion



Version	Type no.	F [N]	v [mm/n]	r [mm]	m [kg]	ø tube [mm]
EZD 52.0501	61552.0501.00	500	138	22	0,4	1"
EZD 52.0502	61552.0502.00	500	176	28	0,4	5/4"

EZZ // Racks

500 N // for EZD 51 and EZD 52



Version	Type no.	H [mm]	L [mm]	ZR [mm]	m [kg]
500 N // Straight					
EZZ 55.0210	61407.5502.6510	850	1050	-	1,6
EZZ 55.0212	61407.5502.6512	1050	1250	-	2,0
EZZ 55.0214	61407.5502.6514	1250	1450	-	2,2
EZZ 55.0216	61407.5502.6516	1450	1650	-	2,6
EZZ 55.0218	61407.5502.6518	1650	1850	-	2,9
EZZ 55.0220	61407.5502.6520	1850	2050	-	3,2
500 N // Curved					
EZZ 55.1210	61407.5512.6510	850	1050	1000	1,6
EZZ 55.1212	61407.5512.6512	1050	1250	1000	2,0
EZZ 55.1214	61407.5512.6514	1250	1450	1000	2,2
EZZ 55.1216	61407.5512.6516	1450	1650	1000	2,6