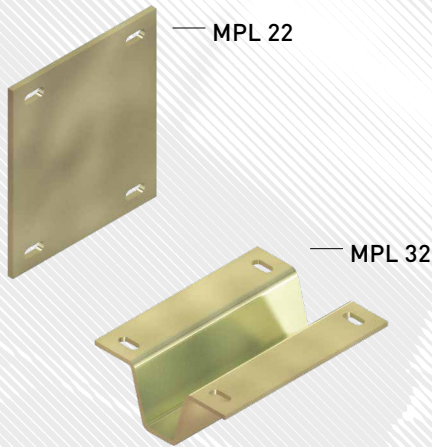


MPL 22, MPL 32 // Mounting plates

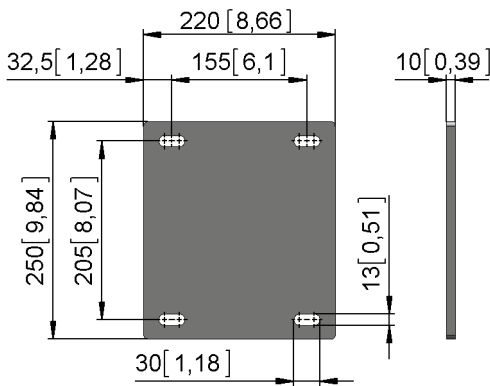


→ Mounting plates for securing bases of EWA and EZW units, for welding or bolting to beams or supports.

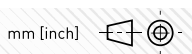
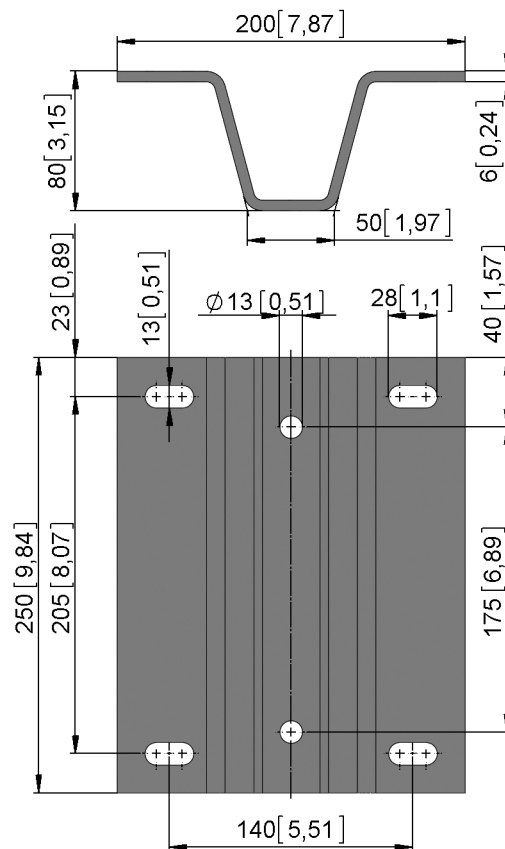
Note:

→ The holes needed for bolting in mounting plate MPL 22 must be drilled additionally.

MPL 22



MPL 32



Version	Type no.	Info	m [kg]
MPL 22.2225	82422.2225.0201	EWA 10/12/14/16, EZW 64	3,3
MPL 32.1210	82532.1210.0111	EWA 10/12/14/16	3,6