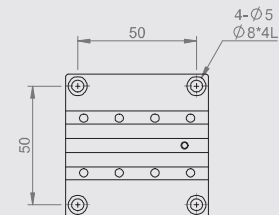
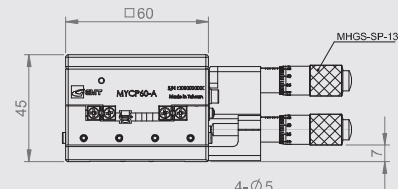
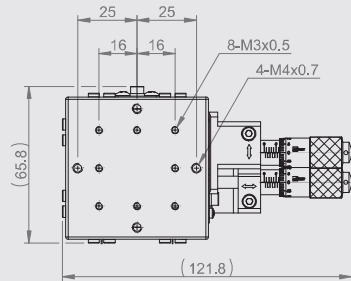


MYCP60-A

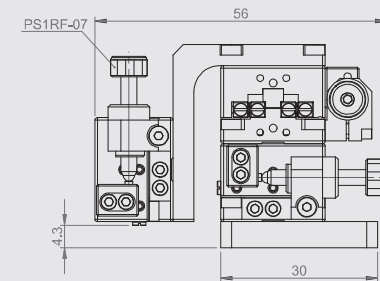
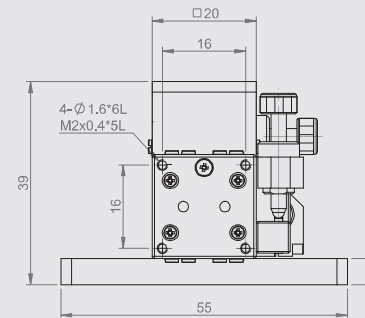
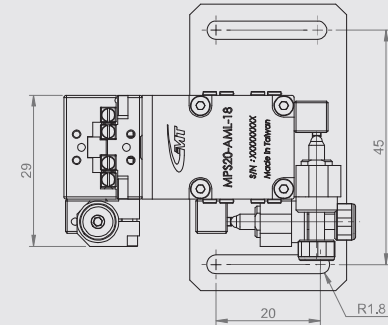


Specification

Unit : mm

Model No.	Table Size	Axis	Travel Stroke	Micrometer Minimum Reading (µm)	Straightness Accuracy (µm)	Allowable Loading (kgf)	Weight (kg)	Material	Surface Finish
MYCP60-A	60*60	XY-axis	±6.5	10	3	4.5	0.5	Aluminum alloy	Black anodized

MPS20-AML-18

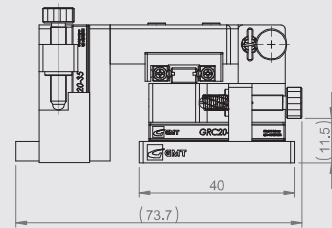
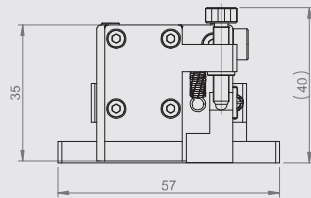
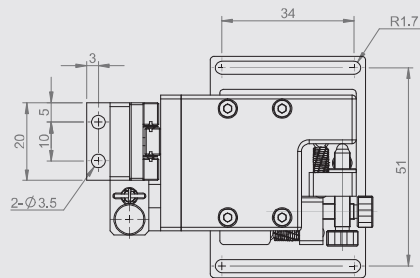
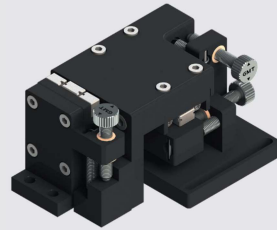


Specification

Unit : mm

Model No.	Table Size	Axis	Travel Stroke	Movement Per Knob Rotation	Straightness Accuracy (µm)	Allowable Loading (kgf)	Weight (kg)	Material	Surface Finish
MPS20-AMR(L)-18	20*20	XYZ-axis	±3	0.5	3	1	0.11	Aluminum alloy	Black anodized

MPS2035-AML

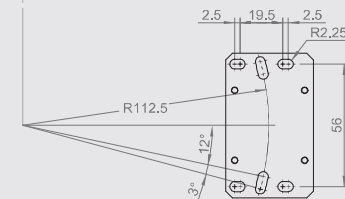
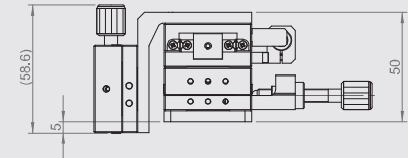
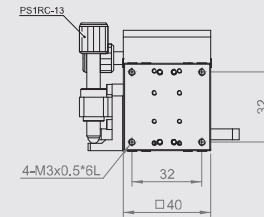
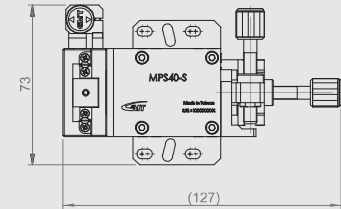
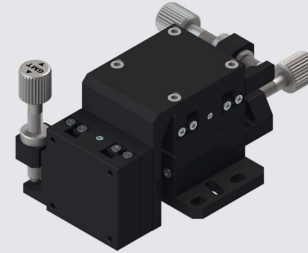


Specification

Unit : mm

Model No.	Table Size	Axis	Travel Stroke	Movement Per Knob Rotation	Minimum Reading (μm)	Straightness Accuracy (μm)	Allowable Loading (kgf)	Weight (kg)	Material	Surface Finish
MPS2035-AMR(L)	20*35	XYZ-axis	±5	0.25	10	3	1.5	0.21	Aluminum alloy	Black anodized

MPS40-SML



Specification

Unit : mm

Model No.	Table Size	Axis	Travel Stroke	Movement Per Knob Rotation	Minimum Reading (μm)	Straightness Accuracy (μm)	Allowable Loading (kgf)	Weight (kg)	Material	Surface Finish
MPS40-SMR(L)	40*40	XYZ-axis	±6.5	0.5	10	3	4.5	0.99	SUS440C	Black Chromium