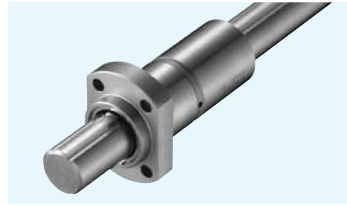
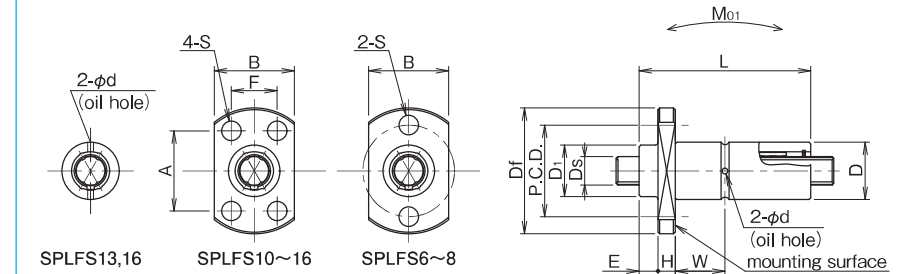
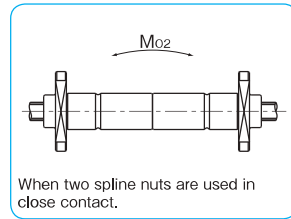
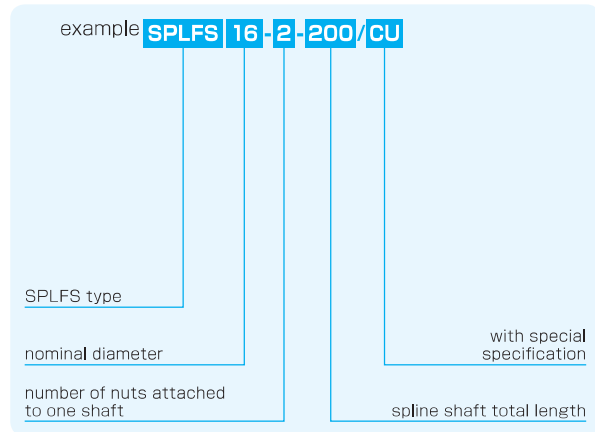


SPLFS TYPE

— Two Side Cut Flange Type —



part number structure



part number	maximum stroke mm	D mm	major dimensions									
			D ₁ mm	L mm	E mm	D _f mm	H mm	B mm	P.C.D. mm	A mm	F mm	
SPLFS 6	22	11	10	40	3.3	23	4	14	17	—	—	
SPLFS 8	20	13	12.5	40	3.3	25.5	4	16	19.5	—	—	
SPLFS10	28	16	15.5	50	3.3	28.5	5	20	—	18	13	
SPLFS13	24	20	19.5	50	4.8	36	5	25	—	22	17	
SPLFS16	26	24	23.5	60	4.8	40	7	29	—	25	19	

S mm	W mm	d mm	D _s mm	basic torque rating		basic load rating		allowable static moment		mass		size
				dynamic C _T N · m	static Co _T N · m	dynamic C kN	static Co kN	Mo ₁ N · m	Mo ₂ N · m	nut g	shaft kg/m	
3.4	12.7	1.2	6	2.3	3.8	1.8	3.0	11.2	45	21.5	0.21	6
3.4	12.7	1.2	8	3.3	5.5	2.02	3.37	13.1	52	27.0	0.38	8
3.4	16.7	1.5	10	6.5	10.9	3.21	5.35	25.6	102	47.7	0.6	10
3.4	15.2	1.5	13	27.6	50.7	4.15	7.6	38.8	155	75.3	1.0	13
4.5	18.2	2.0	16	62.8	115	7.66	14	88.3	353	123.5	1.5	16

1kN≒102kgf 1N · m≒0.102kgf · m

STROKE BALL SPLINE